



EMS Teams – Roles and Responsibilities	
<i>Document Identification Number:</i>	CCD-301.01
<i>Version:</i>	10.0
<i>Revision Date:</i>	June 11, 2009
<i>Document Owner:</i>	EMS Program Administrator (Kurt Schlomberg)
<i>Controlled Copy Location:</i>	Not applicable

The *Greenprint Denver* Environmental Management System (EMS) Teams include a Core Team, Executive Team, and Focal Point Program as described below. The *Greenprint Denver EMS* is lead by staff in the Department of Environmental Health’s Environmental Quality Division.

Core Team

Purpose: Provide overall leadership, coordination and guidance for development, implementation, and certification of a city-wide EMS. This includes maintenance of the EMS website as a communications mechanism for all of CCD, development of all EMS documentation, building awareness of the EMS throughout CCD, and coordination of the ISO Certification process. The 2009 members meet weekly during EMS implementation or as needed. The 2008 members join the 2009 members monthly or as needed on an ongoing basis.

Department/Agency/Office	Name	Position
Environmental Health	Paul Schmiechen	EMS Program Manager Email: Paul.Schmiechen@denvergov.org Phone: 720-865-5412
	Kurt Schlomberg	EMS Program Administrator Email: Kurt.Schlomberg@denvergov.org Phone: 720-865-5416
Five Winds International	John Heckman Jeff Yorzyk Debby Stabler	Consultants Email: j.heckman@fivewinds.com j.yorzyk@fivewinds.com d.stabler@fivewinds.com Phone: 303-442-6969

Unless otherwise specified at the beginning of the document, printed copies of this document are UNCONTROLLED. Always refer to the online EMS document library prior to use to ensure you are using the most current version.



2009		
City Council	Laurie Dannemiller	Executive Director Email: Laurie.Dannemiller@denvergov.org Phone: 720-865-9330
Community Planning & Development	Jack Sinclair	Finance Manager/Sustainability Coordinator Email: Jack.Sinclair@denvergov.org Phone: 720-865-2796
Denver Botanic Gardens	Jeff Joyce Jeff Tenhulzen	Associate Director of Operations Email: JoyceJ@botanicgardens.org Phone: 720-865-3606 Facility Services Member Email: TenhulzJ@botanicgardens.org Phone: 303-961-7340
Denver Museum of Nature & Science	James Calder	Building Services Manager Email: James.Calder@dmns.org Phone: 303-370-6375
Denver Public Library	Michael Murphy	Facilities Manager Email: mmurphy@denverlibrary.org Phone: 720-865-1151
Law	Melinda Olivarez	Executive Assistant Email: Melinda.Olivarez@denvergov.org Phone: 720-865-8770
Office of Economic Development	Ed Fuerte	Supervisor of Administrative Support Email: Edward.Fuerte@denvergov.org Phone: 720-913-1557
Parks & Recreation	Gordon Carruth	Assistant Director Facility Services Email: Gordon.Carruth@denvergov.org Phone: 720-865-0365
Safety - DFD	Fred Burke	Captain Email: Fred.Burke@denvergov.org Phone: 720-913-3467; cell 303-944-4008
Safety – DPD	Sylvia Sich	Captain Email: Sylvia.Sich@denvergov.org Phone: 720-913-6860 or 720-490-0189
Safety – Sheriff	Gary Anderson	Email: Gary.Anderson@denvergov.org Phone: 720-865-4027

2008		
Denver Zoo	Paul Quick	Zoo Planning Department Email: pquick@denverzoo.org Phone: 303-376-6730

Unless otherwise specified at the beginning of the document, printed copies of this document are UNCONTROLLED. Always refer to the online EMS document library prior to use to ensure you are using the most current version.



Environmental Health	See above	See above
General Services	Christian Williss	Sustainability Program Administrator Email: Christian.Williss@denvergov.org Phone: 720-913-8816
Greenprint Denver	Scott Morrissey	Program Manager Email: Scott.Morrissey@denvergov.org Phone: 720-865-9047
Public Works	Paul Sobiech	EMS/WQ Program Coordinator Email: Paul.Sobiech@denvergov.org Phone: 720-913-4528
Theaters & Arenas	Mark Najarian	Director of Facilities Email: Mark.Najarian@denvergov.org Phone: 720-865-4236

Unless otherwise specified at the beginning of the document, printed copies of this document are UNCONTROLLED.
Always refer to the online EMS document library prior to use to ensure you are using the most current version.



Executive Team

Purpose: Provide management support and leadership for development of certified, city-wide EMS. The Executive Team is the primary mechanism for communication with upper levels of CCD management. Team members are responsible for gathering feedback on development of the EMS, communicating the roles and responsibilities of upper management identified within the EMS, and maintaining management awareness of project progress.

Meet: As needed

Department	Name	Position
2009		
City Council	Chris Nevitt	Councilmember, Greenprint Committee Chair
Community Planning & Development	Dan Roberts	Development Services Director
Denver Botanic Gardens	Tom (AJ) Aljinovich	Director of Operations
Denver Museum of Nature & Science	Dave Noel	Vice President, Operations
Denver Public Library	Letty Icolari	Director of Administrative Services
Law	David Fine	City Attorney
Office of Economic Development	Cec Ortiz	Manager
Parks & Recreation	Kevin Patterson	Manager
Safety	Mel Thompson	Deputy Manager
2008		
Denver Zoo	George Pond	VP Planning and Capital Products
Environmental Health	Nancy Severson Sherry Purdy Celia Vanderloop	Manager Deputy Manager Director, Environmental Quality Division
General Services	Derek Brown	Acting Manager
General Services, Theaters and Arenas Division	Jack Finlaw	Director
Office of the Mayor	Amy Mueller Chris Henderson Katherine Archuletta Michele Weingarden	Deputy Chief of Staff Special Assistant to the Mayor Chief Operating Officer <i>Greenprint Denver</i> Director
Public Works	Bill Vidal Bob Kochevar	Manager Deputy Manager

Unless otherwise specified at the beginning of the document, printed copies of this document are UNCONTROLLED. Always refer to the online EMS document library prior to use to ensure you are using the most current version.



Focal Points

To facilitate EMS internal communication, a *Greenprint Denver* EMS Focal Point (“Focal Point”) will be designated for CCD departments and divisions, as appropriate. Focal points are responsible for acting as a liaison with the EMS Core Team gathering feedback on development of the EMS, helping to communicate the roles and responsibilities identified in the EMS to department personnel, and maintaining awareness of project progress within their departments.

The role of the Focal Points includes:

- During implementation, provide lead roles in developing a certified EMS within city departments
- Facilitate internal communication of the EMS, by communicating updates on changes, responsibilities, work practices, etc. for their section

The Focal Points will meet quarterly as a team and more frequently during implementation of the EMS as members of departmental Implementation Teams. Based on the significant environmental aspects of CCD, Focal Points have been selected from Departments/Divisions as follows:

Department or Division	Name	Position	Additional EMS Role
2009			
City Council	n/a	n/a	
Community Planning & Development	TBD	TBD	
Denver Botanic Gardens	Rachel Murray Kellyn Smith Ellen Hertzman Lisa Davis Steve Yanchunis Brian Kintigh	Interpretation Coordinator Corporate Partnership Manager Manager of Visitor Services Maintenance Technician Children’s Program Manager Chatfield Agriculturalist	Green Team Leadership Committee members
Denver Museum of Nature & Science	Matt Gargan EH&S Team members	EH&S team lead	
Denver Public Library	Bob Sarmiento Baruk Sharu Cynthia Lopez	Trades Worker, Facilities BSarmien@denverlibrary.org Custodial Supervisor, Facilities BSharew@denverlibrary.org Facilities Operations Supervisor CLopez@denverlibrary.org	
Law	Sara King Kimberly Kline Kim Avery	Legal Administrator Operational Supervisor (DHS) Operational Supervisor (DHS)	
Office of Economic	Tom Whalen	Analyst	



Department or Division	Name	Position	Additional EMS Role
Development	Christopher Smith	Greener Denver	
Parks & Recreation	Doug Woods Jude O'Connor Scott Rethlake Thomas Herndon Jeannine Halbert Hsuing Mark Tabor Harry Hill	Director, Parks Director, Natural Areas Director, Golf	
Safety - DFD	TBD		
Safety – DPD	TBD		
Safety – Sheriff	TBD		
2008			
Denver Zoo	John Azua Art Benton Carol Flohr Patrick Phelan Tom Kaferle Amber Christopher	Curator of Birds (coordinates Work Place Conservation Committee or WPCC) Facilities Maintenance Supervisor Administrative Support Supervisor Manager of Special Events, Tourism, & Promotions KM Concessions Director of Guest Services	Work Place Conservation Committee members
Environmental Health	Karen Jazowski Rob Cochrane Carolyn DiSanto Keith Raschke Anhtuan Pham	OME Investigator Supervisor EQ Inspector ACC Inspector Decision Support (IT) Supervisor PHI Inspector	
General Services	Melissa Bordwine Everett Archuleta Dawn Levin Dave Thomas Bill Luetzen	Purchasing Purchasing Utilities FPM FPM	
General Services, Theaters and Arenas Division	Lindsay Smith Tom Barnes Joe Cousineau Joe Davis	Administrator, SMG/CCC Bldg. Engineer, SMG/CCC Bldg. Engineer, DPAC Bldg. Engineer, Red Rocks/DC	
Public Works	Lars Williams Terry Baus Pat Kennedy Alice Arline	Solid Waste Wastewater Operations Street Maintenance Finance & Administration	

Unless otherwise specified at the beginning of the document, printed copies of this document are UNCONTROLLED. Always refer to the online EMS document library prior to use to ensure you are using the most current version.



Department or Division	Name	Position	Additional EMS Role
	Felix Espinoza Crissy Fanganello Alan Sorrel Steve Brendlinger Christine Downs Joe Rosales Roger Mutz Russell Luxa	Fleet Maintenance Policy and Planning Development Eng. Services Traffic Eng. Services Marketing and Communications Human Resources and Safety Capital Project Management Capital Project Management	

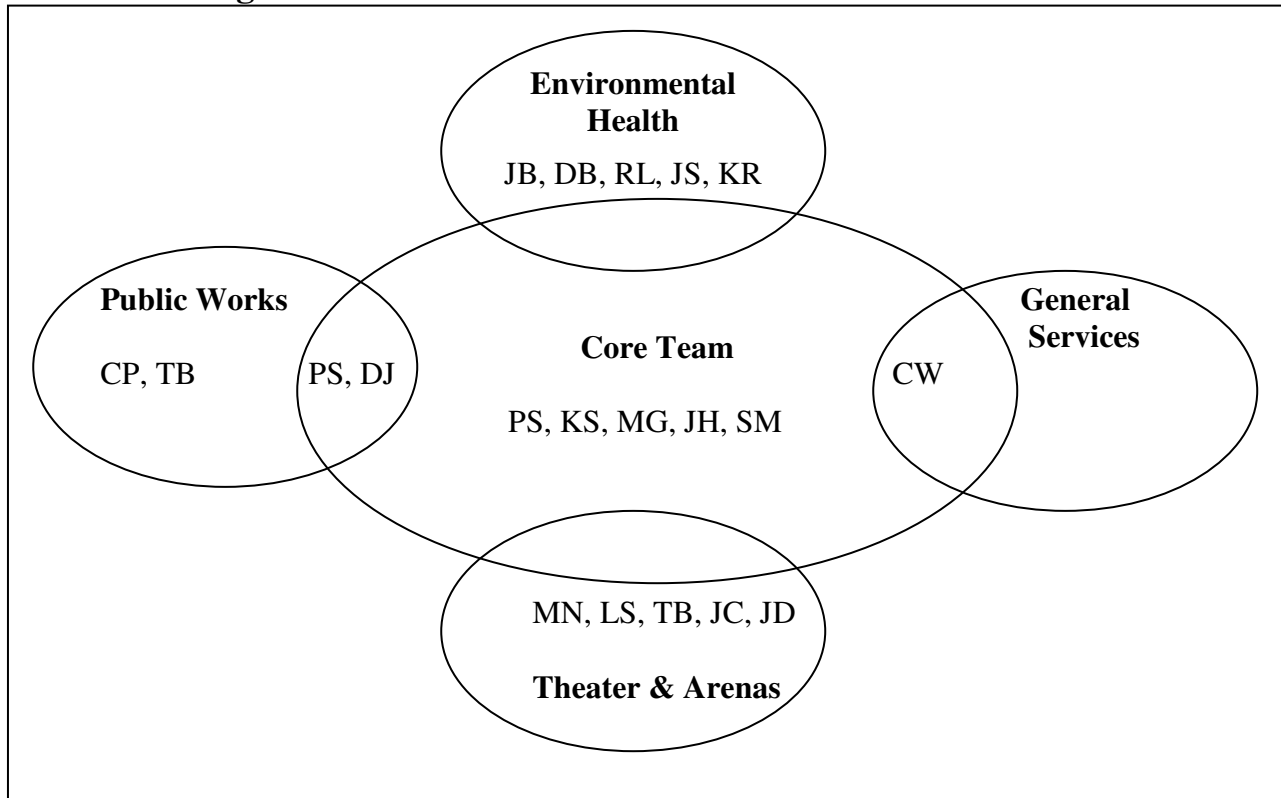
There is no “formal” Focal Point program for tenants, contractors or operators under leases, operational agreements, or some other type of enforceable document. Regarding activities that could have significant environmental impacts, communications are conducted on a periodic basis based on need through email, letters, telephone conversations, or meetings.

- Related Document: [CCD-303 Internal Communication Process](#)

Unless otherwise specified at the beginning of the document, printed copies of this document are UNCONTROLLED.
Always refer to the online EMS document library prior to use to ensure you are using the most current version.



Schematic Diagram of Core Team and Environmental Focal Points



Unless otherwise specified at the beginning of the document, printed copies of this document are UNCONTROLLED.
Always refer to the online EMS document library prior to use to ensure you are using the most current version.