

111.00 - UNIFORMS AND EQUIPMENT

111.01 Requirements - Uniforms and Equipment

- (1) Items purchased for use as part of the uniform shall meet the specifications as set forth by the department in all respects. Unauthorized equipment, alterations or addendum to the official uniform will not be allowed.
- (2) Police Recruit Uniforms
Newly appointed members in training as recruits at the academy shall wear the uniform and possess equipment as directed by the Chief of Police.
- (3) Police Officer Uniforms
 - a. When on duty in uniform, officers shall be guided by the directions in this manual as to the manner and conditions of wearing approved articles of uniforms.
 - b. The uniform shall not be worn while an officer is under suspension.
- (4) Issuance of Badges
 - a. **Patrol Officer** - Officers will be issued the starburst-style badge, silver with gold tone center seal.
 1. The officer's badge number will be stamped on the lower portion of the badge.
 2. This is the only style of badge authorized by the department for Patrol Officers.
 3. Upon completion of their probationary period, officers may purchase an additional breast badge or flat badge.
 - b. **Technician** – Officers appointed to the rank of technician will be issued the starburst-style badge, silver with gold tone center seal.
 1. The word “Technician” will be stamped on the badge in place of the officer’s badge number. The badge may be worn on the uniform.
 2. The officer may purchase an additional breast badge or flat badge.
 3. The officer has the option of having their badge number included with the word Technician on the badge they purchase.
 - c. **Corporal** – Officers appointed to the rank of Corporal will be issued the starburst-style badge, silver with gold tone center seal.
 1. The word “Corporal” will be stamped on the badge in place of the officer’s badge number. The badge may be worn on the uniform.
 2. The officer may purchase an additional breast badge or flat badge.
 3. The officer has the option of having their badge number included with the word Corporal on the badge they purchase.
 - d. **Detective** – Officers appointed to the rank of Detective will be issued the starburst-style badge, silver with gold tone center seal.
 1. This shall include detectives assigned to the Internal Affairs Bureau, Patrol Investigations, and the Public Information Office.
 2. The word “Detective” will be stamped on the badge in place of the officer’s badge number. The badge may be worn on the uniform.
 3. The officer may purchase an additional breast badge or flat badge.
 4. The officer has the option of having their badge number included with the word Detective on the badge they purchase.
 - e. **Detective with ten or more consecutive years** – Officers appointed to the rank of Detective, who are presently serving in a Detective position, and have served at the rank of detective for ten or more consecutive years, will be issued the starburst-style badge, gold with silver tone center seal.

1. This shall include detectives assigned to the Internal Affairs Bureau, Patrol Investigations, and the Public Information Office.
 2. The word "Detective" will be stamped on the badge in place of the officer's badge number. The badge may be worn on the uniform.
 3. The officer may purchase an additional breast badge or flat badge.
 4. The officer has the option of having their badge number included with the word Detective on the badge they purchase.
- f. **Sergeant** – Sergeants will be issued the shield-style badge, silver with gold tone center seal.
1. The sergeant's badge number will be stamped on the lower portion of the badge.
 2. This is the only style of badge authorized by the department for sergeants.
 3. The sergeant may purchase an additional breast badge or flat badge.
- g. **Detective Sergeant with ten or more consecutive years** – Sergeants who are presently serving in a Detective Sergeant position, and who have served as a Detective Sergeant for ten or more consecutive years, will be issued the starburst-style badge, gold with silver tone center seal.
1. This shall include detectives assigned to the Internal Affairs Bureau, Patrol Investigations, and the Public Information Office.
 2. The words "Detective Sergeant" will be stamped on the badge in place of the officer's badge number. The badge may be worn on the uniform.
 3. The officer may purchase an additional breast badge or flat badge.
- h. **Lieutenant** – Lieutenant will be issued the shield-style badge, gold with gold tone center seal.
1. The Lieutenant's badge number will be stamped on the lower portion of the badge.
 2. This is the only style of badge authorized by the department for Lieutenants.
 3. The Lieutenant may purchase an additional breast badge or flat badge.
- i. **Captain** – Captains will be issued the plate-style badge.
1. This is the only style of badge authorized by the department for Captains.
 2. The captain may purchase an additional breast badge or flat badge.
- j. **Commander** – Commanders will be issued the plate-style badge.
1. This is the only style of badge authorized by the department for Commanders.
 2. The Commander may purchase an additional breast badge or flat badge.
- k. **Division Chief** – Division Chiefs will be issued the plate-style badge.
1. This is the only style of badge authorized by the department for Division Chiefs.
 2. The Division Chief may purchase an additional breast badge or flat badge.
- l. **Deputy Chief** – Deputy Chiefs will be issued the plate-style badge.
1. This is the only style of badge authorized by the department for Deputy Chiefs.
 2. The Deputy Chief may purchase an additional breast badge or flat badge.
- m. **Chief of Police** – The Chief of Police will be issued the plate-style badge.
1. This is the only style of badge authorized by the department for Chief of Police.
 2. The Chief of Police may purchase an additional breast badge or flat badge.

111.02 Basic Uniform - Police Officer

- (1) Basic Cap - when in uniform, all officers will have the issued cap immediately available.

- a. The wearing of the prescribed cap for all officers is optional, with the exception of the following occasions when the appropriate cap will be required:
 1. Roll calls, formations and inspections
 2. Parades and special events
 3. Traffic control
 4. Crowd control
 5. Funerals and other formal functions
 6. When directed by supervisors or command officers during tactical situations or other situations when the wearing of the cap would be advantageous to mission accomplishment, identification of police personnel or to enhance the police image or presence
 7. When making a traffic stop utilizing an unmarked police vehicle
 8. When assigned to motorcycle duty or the Mounted Patrol Unit
- b. The wearing of the prescribed cap would not be mandatory in exigent or extraordinary situations where it would not be reasonable or practical.
- c. Manner of wear:
 1. The cap shall be worn in a military manner, square and level on the head
 2. The cap shall be complete, with the appropriate cap emblem attached at center front, side buttons, band, and filigree
 3. Transparent plastic cap covers may be used during inclement weather
 4. The cap shall be in good condition, not soiled, bill not frayed or buckled, crown not crushed or out of shape
 5. The cap shall not give a crushed, sloppy, or droopy appearance
- d. Failure to wear the prescribed cap as directed will result in these minimum penalty assessments:
 1. First Violation - Oral reprimand with entry made in station documentation
 2. Second Violation within a twelve-month (12) period - Written reprimand
 3. Third Violation within a twelve-month (12) period - Suspension of one (1) day without pay
 4. Subsequent violations will be dealt with more severely

(2) Cap - Prescribed

- a. The Chief, Deputy Chief, Division Chiefs, and Captains of Police shall wear the regulation blue uniform cap with the gold cloth band and gold filigree bill.
- b. Lieutenants shall wear the regulation blue uniform cap with gold cloth band and black leather bill.
- c. Sergeants shall wear the regulation blue uniform cap with silver cloth band and black leather bill.
- d. Technicians shall wear the regulation blue cap with silver metal band and black bill.
- e. Patrol officers shall wear the regulation blue cane-side cap with black band and bill.

(3) Headwear - Special

- a. Members assigned to motorcycle duty shall wear the Department issued safety helmet. When riding a motorcycle, this helmet shall be worn with the chin-strap fastened.
- b. Officers working in a construction area are required to wear the Department issued safety helmet in lieu of a hard hat. See OMS 114.02(3)

- c. A warm hat, made of fur-like fabric, may be worn in place of the regulation uniform cap during extremely inclement weather by all officers. A Department issued cloth badge will be sewn to the center front of this hat. Guidelines defining style, quality and vendor are available in the Uniform Supply Unit. Officers may purchase the approved hat at their own expense.
 - d. Other special headwear may be worn in the performance of a particular assignment when approved by the Chief of Police. Specialized headwear will be kept clean, in good repair, and shall have the official insignia attached to the center front.
 - e. Officers may wear a plain black knit watch cap type hat during inclement weather.
 - 1. This hat is not authorized as the prescribed cap for the occasions listed OMS 111.02(1)(b)(1-6).
 - f. Failure to wear the appropriate specialized headgear as directed will subject the violator to those penalty assessments outlined in OMS 111.02(1).
- (4) **Shirt - Basic.** The uniform shirt shall be worn as follows, with the name plate and appropriate insignia of rank.
- a. Division Chiefs when wearing the regulation blue shirt will wear the Departmental belt and will comply with the seasonal regulations in OMS 111.02(6). When wearing the blouse, the white shirt must be worn with the uniform tie. In the winter, the white shirt will be long sleeved. In the summer, the sleeve length for the white shirt is optional.
 - b. Captains and Lieutenants have the option of wearing either a white shirt and tie with their blouse, or the regulation blue uniform shirt.
 - c. All other police personnel will wear the regulation blue shirt.
 - d. All shirt buttons shall be buttoned except that the neck button may be opened when the short sleeved, summer shirt is worn. Long-sleeved shirts shall not be rolled up or turned under.
 - e. Sleeves on short-sleeved shirts shall not be shorter than seven (7) inches from the shoulder seams.
- (5) **Necktie**
- a. When wearing the long-sleeved uniform shirt, officers have the option of wearing a black, four-in-hand type necktie or a turtleneck beneath the uniform shirt.
 - b. Neckties worn with the long-sleeved uniform shirt shall be made of a plain black, dull, or matte tuck into the shirt between the second and third buttons.
- (6) **Seasonal Uniform Items**
- a. Uniform officers have the option of wearing either the long-sleeved uniform shirt with a tie, the long-sleeved uniform shirt with an open collar and a turtleneck shirt beneath, or the short-sleeved uniform shirt without a tie.
 - 1. The long sleeve winter shirt may be worn with a dark blue or black turtleneck shirt in place of a necktie. The turtleneck shirt collars shall be form-fitting to the neck and will be purchased at the officer's expense. Officers have the option of having the collar of the turtleneck embroidered with the letters "DPD". The letters shall be two (2) inch by two (2) inch block letters and shall be located on the left side of the collar, starting one inch to the left of the front center point of the collar. The lettering shall be white in color for patrol officers and sergeants. The lettering may be gold in color for command officers.
 - 2. If the short sleeve summer shirt is worn with a tee shirt showing, the tee shirt may be black or dark blue only. A white v-neck tee shirt may be worn if it does not show.
 - b. The Chief of Police may designate the specific "uniform of the day" for the entire department or for special occasions, such as funerals, promotions, etc.
- (7) **Jacket**
- a. Wearing a lightweight or heavy Department issued jacket will be optional at the discretion of the officer.

- b. The uniform jacket(s) worn by officers will have the Department badge or cloth emblem and appropriate insignia of rank attached.
- (8) Trousers and Breeches - Basic - the basic trousers shall be worn by all members, except those assigned to motorcycle duty who shall wear the approved breeches. See OMS 111.09.
- (9) Trouser Belt - the belt worn with trousers shall be black in color.
- (10) Socks - Solid color socks, either dark blue or black without design, shall be worn. Exceptions from wearing the required dark socks shall be granted only when the officer secures a physician's written statement attesting to the need.
- (11) Footwear - Uniform shoes or boots will be black in color and constructed of smooth all-leather uppers or permanent shine man-made uppers with a choice of outsoles.
 - a. Shoes may be plain toe style or ventilated coach/referee type with black lacing. Wingtip, loafer, or slip-on shoes will not be approved.
 - b. Boots may be the pull-on or laced up type with a plain toe style. Hiking boots, engineer boots, and construction boots will not be acceptable. Specialty type boots may be worn when approved by commanders.
 - c. Ornamental dressing, design stitching or otherwise decorated shoes or boots will not be acceptable.
 - d. All footwear should be sturdy, serviceable quality and shall be kept well polished and in good repair at all times.
 - e. During inclement weather, galoshes, overshoes, or snow boots may be worn. These will be black or dark blue in color and may be the slip-over or pull-on type with zipper, Velcro, button, lacing, or buckle-type fasteners. Boots with multi-colors, stripes, designs, or any printing or logos are not acceptable.
- (12) Reflective Apparel - a high-visibility reflective vest or reflective clothing shall be worn by all officers assigned specific traffic control assignments, such as at sporting events. Reflective apparel should also be worn by officers directing traffic at accident scenes, fire scenes, hazardous material spills, malfunctioning traffic signals, and the like whenever possible.
 - a. The approved vest and reflective clothing will be issued through the Uniform Supply Unit.
 - b. Officers should not wear high-visibility clothing at any scene where the reflective nature of the clothing will jeopardize personal safety.

111.03 Other Required Items

In addition to basic uniform clothing, the following are required items:

- (1) Department Badge - only the ISSUED Departmental metal badge and the cloth badge are authorized for wear with the uniform in the following manner:
 - a. The metal badge shall be worn on the uniform shirt attached to the badge holder or on the outermost garment so as to be clearly visible at all times.
 - b. The authorized cloth badge may be sewn on the outer garments, but not on the uniform shirt. The cloth badge may also be sewn on the work uniform, such as coveralls, at the direction of the Division Chief.
- (2) Department Cap Badge
- (3) Current Department Identification Card
- (4) Valid Colorado Driver's License. The driver's license shall state the officer's current residential address or Post Office Box in his municipality or county of residence. See OMS 116.08(4).
- (5) Standard Uniform Belt - the belt worn shall be the belt issued by this Department, or approved for wear by the Chief of Police or his designee. No basket weave belts or accessories are allowed. The belt shall be worn so adjusted that it fits the wearer's waist with no appreciable deviation from the horizontal plane. It will be affixed to waist belt with belt keepers or secured with snap loops on trousers.

- a. This belt shall not be altered to change its physical appearance by riveting, cutting, installing snaps, etc.
 - b. The Standard Uniform Belt shall contain the following items:
 - 1. Authorized holster and sidearm
 - 2. Handcuffs in case
 - 3. Baton ring
 - 4. Department issued tear gas (Mace) in holder
 - 5. Ammunition in case
 - 6. Radio case, worn optionally
 - c. Members in uniform assigned to office duty shall wear the Standard Uniform Belt, with all the required equipment.
 - d. Members in specific assignments may wear special uniforms or equipment as authorized by the Division Chiefs of Police
 - e. All items worn shall be departmental issue or meet Department specifications.
 - f. All items shall be worn in the manner intended without alterations.
 - g. Exceptions to carrying non-lethal aerosol chemical weapons may be granted to uniformed officers under the following conditions:
 - 1. A letter must be obtained from a medical specialist stating the reason(s) why an officer cannot carry or use the issued aerosol chemical weapons.
 - 2. The medical specialist's decision will be based upon the product information provided by the officer. Such information shall include the brand name, dispenser size, type and amounts of active ingredients used in the formulation, and the product's expiration date.
 - 3. Only medical letters from specialists such as an allergist, dermatologist, neurologist, ophthalmologist, otorhinolaryngologist, pulmonologist, or toxicologist will be acceptable.
 - 4. Each officer shall have the medical letter approved and documented by the Occupational Health and Safety Clinic at Denver Health Medical Center before sending it through the chain of command.
 - 5. The officer's medical letter will be filed with the Inspections and Rehabilitation Coordinator and a copy sent to the officer.
 - 6. A new medical release will be required each time the Department issues a different type or brand of non-lethal aerosol chemical weaponry.
 - 7. The officer must return the issued aerosol chemical weapon to the Uniform Supply Unit with a copy of the medical letter. Uniform Supply personnel shall remove the chemical weapon from the Officer's Uniform Clothing Record, DPD 2B.
- (6) Holster - the holster issued by the Department or other approved holsters which meet the Department's specifications shall be worn.
- a. Holsters, other than those issued, may be purchased at the officer's expense.
 - b. The Chief Firearms Officer will select suitable holsters that meet departmental guidelines.
 - c. The Chief Firearms Officer shall post a list of approved holsters in a conspicuous place in the Firearms Bureau. Non-listed holsters may be approved by the Chief Firearms Officer after physical inspection to ensure compliance with established criteria.
 - d. Holsters shall properly fit the weapon carried, and the holster safety strap or device shall be in use at all times. Holsters shall be worn only in the manner prescribed by this Department.
 - e. All other types and variations, whether issued or purchased, are not authorized. No variations, modifications, alterations, or basket weaves shall be allowed.

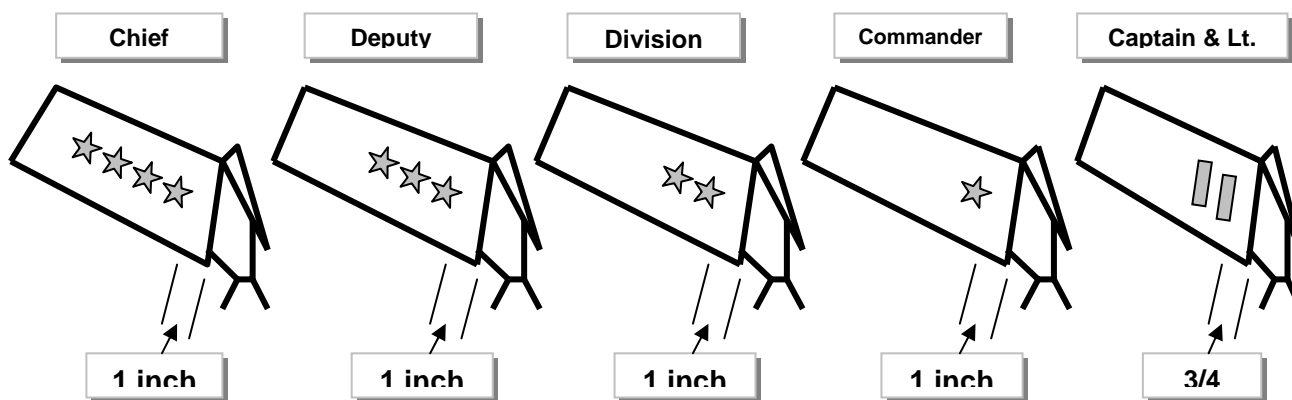
- (7) Handgun - approved handgun shall be carried in the approved holster, fully loaded. Semi-automatics shall have a round in the chamber and a full magazine of approved ammunition. Revolvers shall have all cylinder chambers loaded with appropriate ammunition. See OMS 105.06.
- a. The handgun shall be clean, properly maintained, and in serviceable condition at all times.
 - b. Handgun grips - only dark colored grips are allowed.
 1. Grips that interfere with prescribed speed loading procedures are not allowed.
 2. Grips must allow the gun to be used easily with either hand.
- (8) Ammunition case -
- a. An ammunition case for side-arms that meets Department specifications shall be worn. Ammunition cases may be seen at the Pistol Range.
 - b. The ammunition case for the Urban Rifle shall be of two distinct types:
 1. A Department issued black plain leather case is the only authorized pouch for continual wear on the uniform duty belt. Wearing an Urban Rifle ammunition case on the duty belt is optional. Cases made of web material (non plain black leather appearance) shall not be worn on the duty belt except under emergency conditions, and then only for the duration of a given critical incident.
 2. A Department issued nylon/web material case is authorized for carrying an Urban Rifle magazine within an officer's equipment bag, police vehicle, etc. It is not authorized for uniform wear on the duty belt except under emergency conditions as described in OMS (2) above.
 3. Urban Rifle ammunition cases may be seen at the Pistol Range.
- (9) Ammunition - a minimum of ten (10) rounds of ammunition shall be carried in the ammunition case. Ammunition shall be of an approved type, issued by the Range Officer, clean, and serviceable.
- (10) Handcuff case - the handcuff case issued by the Department or one that meets Department specifications shall be worn.
- (11) Handcuffs and other retention devices:
- a. Only handcuffs issued by the Department or handcuffs that meet Department specifications shall be carried.
 1. Handcuffs shall be carried in the handcuff case by uniform officers
 2. A handcuff key shall also be carried.
 - b. Officers are prohibited from carrying or using rope or cord hobbles.
 - c. Officers may use a RIPP leg restraint device to secure prisoners who are not adequately controlled by handcuffing. RIPP leg restraint devices shall only be used in situations where handcuffed prisoners continue to be combative and still pose a threat to themselves, officers, or could cause significant damage to property, if not properly restrained.
 1. The carrying of the RIPP leg restraints on the officer's person will be optional. On-duty uniformed officers will have the leg restraints immediately available.
 2. Only departmentally issued RIPP leg restraint devices will be carried.
 3. Only officers who have completed the department's RIPP leg restraint training are permitted to carry the device.
 4. When officer safety will not be jeopardized, an ambulance will be called to the scene to medically clear any suspect restrained with a RIPP leg restraint before the suspect is transported to jail or another location. If officer safety considerations require that a suspect be immediately removed from a scene, an ambulance will be requested to meet the transporting officers at a safe but nearby location
 5. A Use of Force Report must be completed when the RIPP leg restraint is utilized to restrain actively resisting suspects, in accordance with OMS 105.01.
 - d. Disposable handcuffs known as "flex cuffs" are used where multiple arrest or immobilization situations exist.

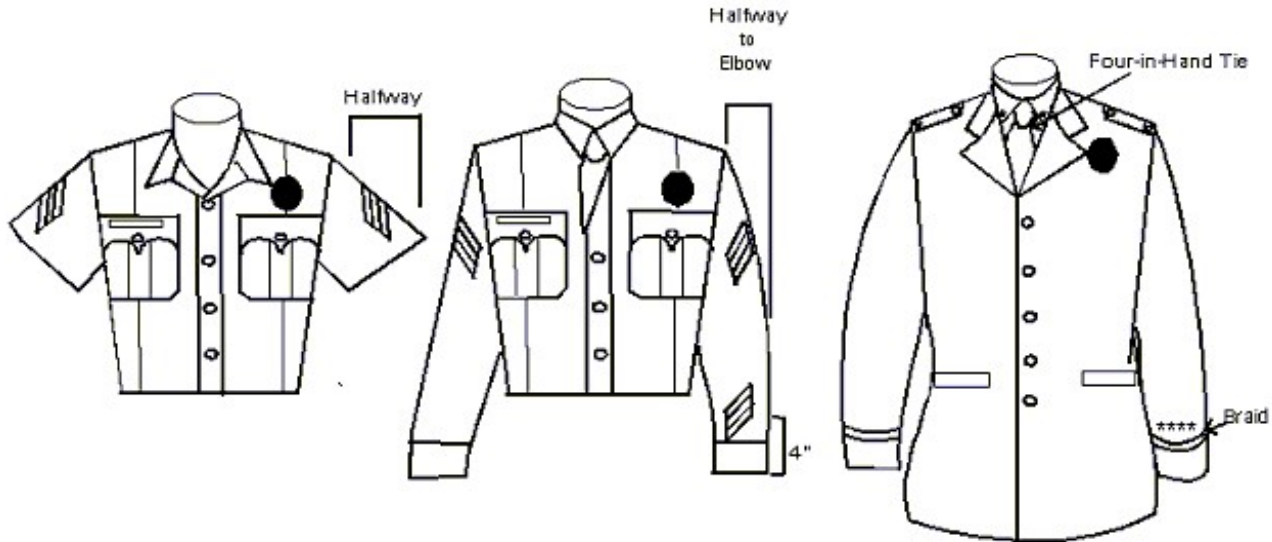
1. These items are purchased by the Department and issued as needed by a supervisor.
 2. These restraints are self-locking and must be cut or snipped apart after being applied.
- (12) Whistle - a whistle is part of the basic uniform. It shall be carried on a key strap on the Department belt or concealed within the uniform. Officers may wear a whistle attached to a silver-colored chain on the right shoulder and chest area, concealed in right shirt pocket.
- (13) The baton may be carried or shall be immediately available at all times unless specifically excepted by other orders. All batons issued by the Department are authorized.
- a. Batons that are twelve (12) inches to twenty-nine (29) inches in length are not issued, but are authorized to be carried.
 - b. Expandable batons are not issued, but are authorized to be carried under the following conditions:
 1. The approved expandable baton is the Monadnock model MX expandable baton
 2. The fully expanded size shall be between twelve (12) inches and twenty-six (26) inches
 3. The baton shall be black in color
 4. Successful completion of a training session for the use of the expandable baton
- (14) Leather billy or saps - only commercially manufactured leather billy or saps may be carried at the discretion of the officer. See OMS 105.02(5)
- (15) Key strap - a key strap with key ring may be worn on the Department belt.
- (16) Belt slide loops or keeper straps for the Department belt:
- a. Belt slide loops may be worn to secure the Department belt to the trouser belt
 - b. A maximum of four (4) keepers with two (2) brass snaps on each keeper shall be worn
- (17) Watch - a pocket or wristwatch capable of indicating the accurate time of day shall be carried.
- (18) Ball Point pen - a ball point pen containing black ink shall be carried.
- (19) Pocket knife - a pocket knife shall be carried and will be of a non-mechanical nature. The maximum blade length permitted is three and one half (3 1/2) inches.
- a. Knives shall only be carried in trouser or jacket pockets or in a leather snap pouch made specifically for the knife and worn on the Department belt. The knife must be completely concealed when not in use.
 - b. No spring, snap, gravity, razors, or hunting knives allowed.
- (20) Flashlight - a flashlight shall be carried. Approved for use are:
- a. Regular flashlights not exceeding three (3) cells in length with the lens or head not exceeding three (3) inches in diameter.
 - b. The rechargeable Streamlight flashlight, Model # SL-20.

111.04 Nameplate, Medals and Pins - Wearing of

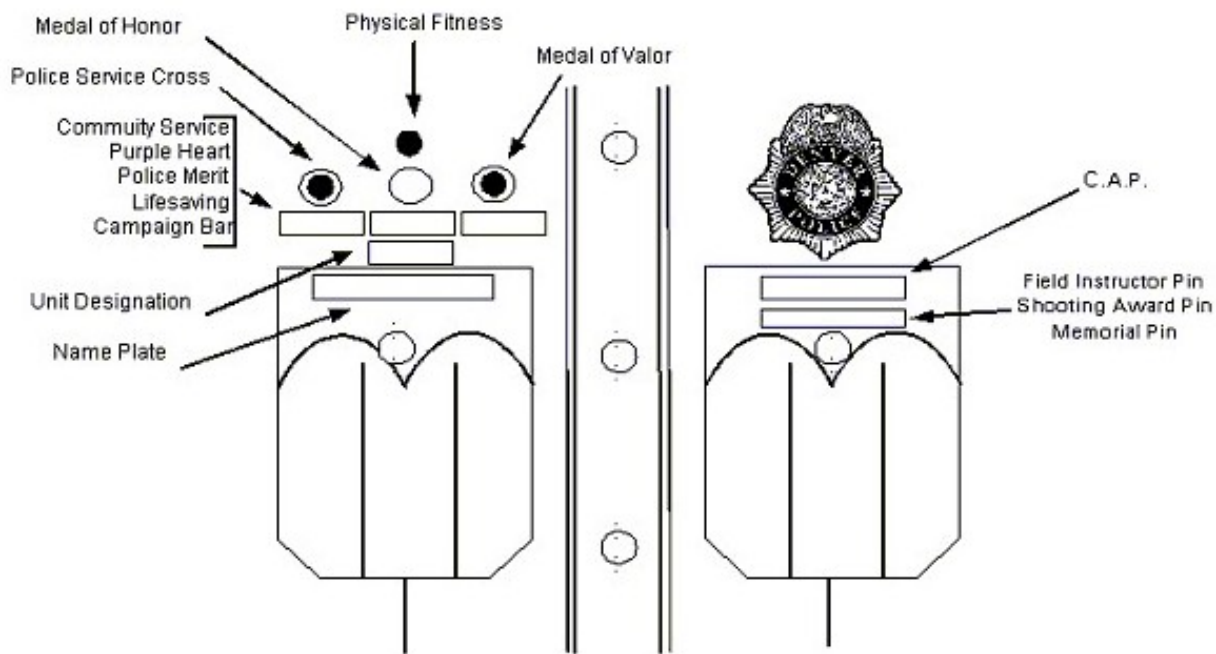
- (1) Insignia of rank - all members, corporal or above, shall wear the appropriate insignia of rank in conjunction with their uniform as specified in diagrams, and shall meet departmental specifications. Rank insignia for command officers may be cloth or metal when worn on field jackets, but shall be metal on the uniform shirt and command blouse.
- (2) Wearing of Insignia:
 - a. Corporal
Two (2) chevrons, blue with white outline on black background, on each sleeve of the uniform shirt and jacket, centered between the bend of the elbow and shoulder seam (see diagram).
 - b. Sergeant
Three (3) chevrons, blue with white outline on black background, on each sleeve of the uniform shirt and jacket, centered between the bend of the elbow and shoulder seam (see diagram).

- c. **Lieutenant**
A single bar shall be affixed to the center of each side of the collar of the uniform shirt worn by lieutenants. The front edge of the bar shall be one (1) inch from, and parallel with, the front edge of the collar. On the dress coat and the field jacket, a single bar shall be placed with the outer edge, 5/8 inch above the sleeve seam. The bar shall be centered over the shoulder seam and shall be parallel to the sleeve seam. Bars will be 3/4 inch in length for shirts, and larger for jackets.
- d. **Captain**
Two (2) bars shall be affixed to each side of the collar of the uniform shirt worn by captains. The front edge of the insignia shall be one (1) inch from, and parallel with, the front edge of the collar. On the dress coat and the field jacket, the bars shall be worn on each shoulder with the outer edge 5/8 inch above the sleeve seam. The bars shall be centered over the shoulder seam and shall be parallel to the sleeve seam. Bars will be 3/4 inch in length for shirts, and larger for jackets.
- e. **Commander**
A star shall be affixed to each side of the collar of the uniform shirt worn by commanders. One point of each star shall point upwards in such a manner that a line bisecting this point will be parallel to the front edge of the collar. The center of the star shall be one (1) inch from the front edge of the collar and centered on the collar. On the dress coat and on the field jacket, a star shall be worn on each shoulder so that one point of the star points to the rear. The center of the star shall be one (1) inch above the sleeve seam and centered directly over the shoulder seam.
- f. **Division Chief**
Two stars shall be affixed to each side of the collar of the uniform shirt worn by division chiefs. One point of each star shall point upwards. The stars shall be centered between the top and bottom edges of the collar, and the center of the front star shall be 1 inch from the front edge of the collar. On the dress coat and on the field jacket, two stars shall be worn on each shoulder in such a manner that one point of each star points to the rear. The center of the outside star shall be 1 inch above the sleeve seam, and both stars shall be centered directly over the shoulder seam.
- g. **Deputy Chief**
The three-star insignia worn by Deputy Chiefs shall be affixed in the same relative position as prescribed for division chiefs.
- h. **Chief of Police**
The four-star insignia worn by the Chief of Police shall be affixed in the same relative position as prescribed for division chiefs.





- a. Chief of Police: Three (3) gold stars to be worn on the shirt collar or spaced evenly on the epaulet of the blouse, overcoat, or raincoat.
 - b. Deputy Chief of Police: Two (2) gold stars to be worn on the shirt collar or spaced evenly on the blouse epaulet.
 - c. Division Chief: One (1) gold star to be worn on the shirt collar or centered evenly on the blouse epaulet.
 - d. Captain: Two (2) gold bars to be worn as designated in diagram.
 - e. Lieutenant: One (1) gold bar to be worn as designated in diagram.
 - f. Sergeant: Three (3) chevrons, blue on dark background, on each sleeve as shown in diagram.
- (3) Nameplate - the nameplate shall be worn on the jacket or shirt affixed on the right shirt pocket flap centered one-half (1/2) inch below the top of pocket on the flap.
- a. Nameplates shall be departmental issue and shall be of a color matching the badge. Command Officers gold in color, Sergeants and below silver in color.
 - b. This plate shall contain a last name and at least one (1) initial.
 - c. Field Instructors shall wear the regulation Field Instructor identification plate on the jacket or shirt pocket centered one-half (1/2) inch below the top of the left pocket. Field Training Officers with ten (10) or more years of continuous service in the position of a Field Training Officer may wear a gold colored pin available in Uniform Supply.



- (4) Authorized Medals or Pins - authorized medals or pins worn on the uniform shirt or jacket shall be affixed in the following manner:
- a. On the left side of the shirt or jacket, authorized medals or pins, such as the Citizens Appreciate Police (C.A.P.) pin, shall be centered one-half inch below the top of the pocket.
 - b. On the right side of the shirt or jacket, the Unit Designation Pin may be worn by all ranks. The pin shall be centered one-half inch above the pocket. Officers may purchase the approved pin at their own expense. Information about the approved style, color and purchase is available in the Uniform Supply Section.
 - c. Recipients of the Medal of Honor, the Police Service Cross, or the Medal of Valor are authorized to wear official replicas of the award one-half inch over the right shirt or jacket pocket. If two or more of these awards are worn, they will be placed side by side with one-half inch spacing between the pins.
 - d. Recipients of the Police Merit, Community Service, Lifesaving, Purple Heart, or Campaign Bar award are authorized to wear the bar award one-half inch over the right shirt or jacket pocket. Recipients of more than one type of bar award will wear them connected side by side.
 - e. If medal replicas, bar awards, and the unit designation pin are worn in any combination, they will be separated by one-half inch with medal replicas uppermost and the unit designation pin lowermost.
 - f. Campaign Bar
 1. Authorized by the Chief of Police to commemorate a particularly significant event in the Department's history when the following conditions are met:
 - a. The entire Department was under full mobilization for four or more consecutive days.
 - b. The mobilization was planned or was in response to a disaster.
 2. Only department personnel or Public Safety Cadets employed at the time of the event will be entitled to wear that event's campaign bar.
 - a. The Chief of Police may authorize a pin commemorating a specific special event or incident to be worn by CSA employees who were assigned to the Denver Police Department during the event. Such a pin shall be worn with appropriate civilian attire.
 3. The campaign bar will not be authorized for a response to a civil disturbance incident.

4. The design of a campaign bar will be approved by the Chief of Police
 5. The wearing of a campaign bar is optional
 6. The Chief of Police will authorize a specific campaign bar by Departmental Directive
- g. Memorial Bar
1. A Memorial Bar will be issued following the death of an officer killed in the line of duty.
 2. The bar will be black enamel inscribed with the fallen officer's serial number, in gold.
 3. The bar shall be worn on the uniform shirt, in the center of the left pocket line, one-fourth (1/4) inch above the stitching, or just below the Field Training Officer Pin.
 4. The bar may be worn for one (1) year following the death of the fallen officer. Wearing of the bar shall be optional.

111.05 Optional Items - Uniform and Equipment

- (1) The articles of uniform clothing and equipment specified in this section have been approved as optional items which may be possessed and/or worn by members as provided herein. The optional articles shall meet departmental specifications.
- (2) Uniform
 - a. Service stars and bars
 1. Command officers (the rank of Lieutenant and above) shall wear a five-pointed (5) gold star, issued by Uniform Supply, for each completed five (5) years of service. The stars shall be worn one-half (1/2) inch above the braid on the left sleeve of the uniform blouse or four (4) inches above the end of the left sleeve on other uniforms.
 2. All other uniformed officers shall wear a blue cloth bar, issued by Uniform Supply, for each completed five years of service. The service bar will be of like material and shade as the Sergeant chevron and worn as indicated on the uniform diagram. Note: Both of the above applies to long sleeve garments only.
 - b. Shoulder patches. When authorized, they shall be worn on the left sleeve one-half (1/2) inch below the shoulder seam.
 - c. Command dress uniform. This uniform may be worn as an optional dress by members in a division, with the permission of the respective Division Chief.
 1. The uniform will include the regulation dress jacket, white shirt with four-in-hand tie (not tucked into shirt).
 2. The regulation topcoat may be worn with this uniform.
 - d. Sweaters
 1. Only sweaters meeting the following departmental standards may be worn with the regulation uniform:
 - a. Sweaters will be v-neck, one hundred percent (100%) wool, navy blue, reinforced with patches on the shoulders, elbows and forearms, with epaulets.
 - b. These sweaters will be purchased at the officer's expense.
 2. Sweaters will be worn only with the regulation long-sleeved shirt and tie or long-sleeved shirt and turtleneck.
 3. The sweater will be worn with the cloth badge of the appropriate rank, name plate and appropriate insignia of rank attached. No other medals, pins, awards or service stripes will be worn on the sweater.
 - e. Protective Vests
 1. Personal armor vests, purchased at the officer's expense, will be concealed under a uniform shirt. Tactical and ballistic types of vests, other than the approved armor shirts, will be worn over an outer garment only when approved by the officer's commander.

2. Armor Shirts, approved by the Department, may be purchased at the officer's expense through Uniform Supply and worn with the regulation uniform. The badge and name plate will be worn on the outside of the Armor Shirt. If worn with the long sleeved shirt, the regulation tie must be tucked into the regular uniform shirt.
- (3) Equipment
- a. Automotive Door Lock Opening Devices
 1. Officers are authorized to carry and use specialty car lock openers.
 - a. The carrying of a car-lock opening device is optional and must be purchased by the individual officer.
 - b. Only professionally designed and manufactured tools such as "slim-jims" will be carried.
 2. The decision to use any car-door opening device will be at the discretion of the individual officer.
 - a. In a non-emergency situation, the citizen should be advised to contact a bonded locksmith or towing service.
 - b. Officers should check the driver's license and vehicle registration of the requesting party to verify that the person is entitled access to the vehicle.
 - c. It is the officer's responsibility to advise the citizen that the use of a slim-jim or other automotive lockout tool may damage his vehicle.
 - d. Slim-jims should not be used on any vehicle equipped with electric door locks.
 3. When unintentional damage to a vehicle results from the use of an automotive door-lock opening device, a supervisor will be called to the scene to assess the damage. The officer involved will write a letter to the Civil Liability Bureau, through the chain of command. See OMS 3.07

111.06 Supplemental Clothing

- (1) Optional uniform items listed below may be worn by members subject to authorization by their immediate commander. (The intent of this section is to provide commanders with reasonable latitude toward achieving greater uniformity in the appearance of members assigned to a particular shift, special detail, or duty assignment.)
- (2) The police badge or replica shall be displayed when wearing any of the following coats or coveralls:
 - a. Coverall Parka - this specified parka is intended for optional wear by members assigned to motorcycle duty in extreme cold weather.
 - b. Leather Windbreaker Jacket - the specified leather jacket has been adopted for members assigned to motorcycle duty.
 - c. Rain Wear - during inclement weather members may wear the regulation raincoat.
 - d. Coveralls - coveralls may be worn when authorized by the respective Division Chief.
 1. Instructions for wearing coveralls: Coveralls may be worn in lieu of the basic uniform.
 2. During the periods when the summer shirt is authorized for wear, short sleeve coveralls may be worn.
 3. Coveralls shall be worn with a name plate and cloth badge, unless the commanding officer feels it is in the best interests of the department not to wear such items.
- (3) Scarf - a scarf may be worn with any of the approved jackets and coats.
 - a. The ends of the scarf shall be kept under the garment.
 - b. Scarves acquired for wear shall be black or navy blue in color.
- (4) Gloves - gloves may be worn for comfort and protection at the discretion of members. (Sap gloves or sap type gloves are prohibited.)

- a. They shall be black in color.
 - b. White cloth formal gloves made available to the department may be worn by members assigned to:
 - 1. Funeral Honor Guard
 - 2. Special dress functions when approved by the commander supervising the detail
- (5) Vests worn for warmth will be navy blue in color. They will be worn inside the approved outer garment and must not extend below it.

111.07 Personal Appearance - Uniform Maintenance

- (1) When the uniform is worn, care shall be taken that it fits well, is neat, clean, in good repair, properly pressed, and that all leather and metal goods are polished.
- a. Repaired Uniforms - members shall use sound discretion in wearing uniform clothing, which has been repaired
 - b. Uniform items with visible areas of repair, which detract from the member's appearance, shall not be worn
 - c. Uniforms that obviously need repair/replacement shall not be worn
 - d. Superior officers or IAB inspectors shall determine the propriety of wearing garments in question
- (2) Personal Grooming - Responsibility - the professional bearing expected of departmental members requires that each member assume the responsibility for adopting high standards of personal grooming and cleanliness.
- a. Standards - Personal Grooming - the following standards for grooming are deemed reasonable and shall be minimum guidelines to be complied with by each member whenever wearing the uniform. Neatness is mandatory.
 - 1. Hair grooming shall conform to the following standards:
 - a. The bulk and length of the hair shall not interfere with the normal wearing of the standard police cap or helmet, nor will the hair curl or flare out from beneath the lower edge of the cap or helmet.
 - b. Sides and back of hair may be either tapered or block cut, but in no instance will the hair overhang the uniform shirt collar. Hair may cover the upper half of the ear, provided that no more than one half is covered when the cap is being worn.
 - 2. Members shall be clean-shaven; however, neatly trimmed sideburns and mustaches are permissible.
 - a. Sideburns will not extend downward below the bottom of the ear lobe, with the flare no wider than one and one-fourth (1 1/4) inches. They will be neatly trimmed, shall not be excessively bushy, and shall not cover any part of the ear.
 - b. The face shall be clean-shaven, with the exception that the wearing of neatly trimmed mustaches will be permitted. Mustaches may be moderately curled upwards at the ends, provided that no part of the mustache is below a horizontal line from the bottom of the lower lip, and may extend no more than one (1) inch past the corner of the mouth. The mustache will not cover any part of the upper lip.
 - c. No beards or goatees are permitted for uniformed personnel.
 - d. Plain clothes members may wear beards or goatees only with permission of the Chief of Police.
 - e. Members so authorized in paragraph (d) shall not be permitted to work off duty in uniform. All plain-clothes officers working off duty must conform to the foregoing standards.

- (3) Restriction - Civilian Clothing - civilian clothing shall not be worn with any distinguishable part of the uniform when in public view. The uniform cap will not be worn in conjunction with any civilian attire. See OM RR-802.
- (4) Wearing of Jewelry
 - a. Wearing of jewelry, pins, insignia, buttons or other miscellaneous items not specifically issued or authorized by this Department shall not be worn or attached to any portion of the uniform so they are or may become visible to the public.
 - b. While in uniform, officers will not wear or display visible neck jewelry, bracelets, brooches, or any other item not prescribed to be worn with or as part of the uniform.
 - c. Medical identification bracelets and conservatively styled rings will be considered acceptable jewelry.
 - d. Unadorned post earrings for pierced ears will be considered acceptable for female officers only.
- (5) Miscellaneous Restrictions
 - a. Fingernails shall not extend more than one-eighth (1/8) inch beyond the fingertips.

111.08 Female Officers - Requirements

- (1) Female officers shall wear the basic uniform when working patrol or traffic car assignments. Footwear shall be the same as in OMS 111.02(11).
- (2) Hair Styles - In Uniform
 - a. The hair will be neat and trim and shall not be worn longer than the bottom of the uniform shirt collar. If hair is longer, it must be secured and pinned at the back of the head while in uniform in order to conform with the above length requirement.
 - b. The hair shall not cover any portion of the eyebrow, and shall at all times be worn behind the outside corner of each eye in a manner not to interfere with vision.
 - c. The hair may be worn in a "French Roll", "Chignon", "Cornrow" or "French braid" style, or other similar style worn high and tight on the head, so long as it conforms to all paragraphs of this section. Pigtails, braids, pony-tails, or bouffant styles are prohibited.
 - d. The hairstyle shall not in any way interfere with the proper wearing of any authorized headgear or gas mask.
- (3) Lipstick, facial make-up, or eye make-up, including false eyelashes if worn, must be conservative.
- (4) Other requirements for female officers shall be the same, where applicable, in OMS 111.01 through 111.09.

111.09 Procuring, Replacement, and Return of Uniforms and Equipment

- (1) Procuring Uniforms
 - a. Uniforms may be procured from the Uniform Supply Unit.
 - b. Alterations (hemming, shirt tapering, etc.) will be the responsibility of the individual officer.
 - c. The following measurement requirements must be adhered to in compliance with OMS 111.02(8): Trousers; bottom of leg opening to be seventeen and one-fourth (17 1/4) inches when waist size is twenty-eight (28) inches, pant leg opening to increase one-fourth (1/4) inch for every two (2) inches waist size increase.
 - d. A list of tailors and their prices will be posted at the Uniform Supply Unit.
 - e. The officer's personal expense for tailoring, ties, cleaning, etc. is taken into budget consideration when establishing the annual equipment allowance.
- (2) Loss, Damage, and/or Replacement of Department Issued Property

- a. In the event of loss or damage to department property in the course of official police action, an officer shall direct a letter to his/her Division Chief through the chain of command, requesting that this property be replaced by the Department.
 1. Each request will be forwarded to the Financial Services Bureau with a recommendation by the officer's Division Chief, approving or denying that officer's request for replacement. The approved request will be forwarded to Uniform Supply.
 2. Temporary replacements of department issued equipment may be made only until it has been determined who will bear the cost. If replacement at department expense is not approved, the officer shall submit payment to the Financial Services Bureau for the loaned equipment.
 - b. If department issued property is damaged in the course of an arrest, the arrested party may be charged with destruction of public property. (Section 38-61 of the Revised Municipal Code). The back of the arrest slip should indicate the damage and approximate replacement cost, for the information of the court in penalty assessment.
 - c. Any department property lost or damaged as a result of negligence by the officer will be replaced at the officer's expense.
- (3) Loss, Damage and/or Replacement of Personal Property
- a. In the event of loss or damage to personal property in the course of an official police action, the officer will exhaust all legal means of replacing such personal property. The arrested party will be charged with destruction of private property (Section 38-71 of the Revised Municipal Code). The back of the arrest slip should indicate the damage and approximate replacement cost for the information of the court in penalty assessment.
 - b. Only under extreme circumstances, when every other legal recourse has been exhausted and when the officer can show that the cost of replacement will be in excess of the department equipment allowance for the current year, will an officer be reimbursed for loss or damage that has occurred to personal property.
 - c. The final decision for replacement of personal property will be made by the Financial Services Bureau in consultation with the Chief or his designee.
- (4) Upon retirement or separation, all items of issue will be turned into the Uniform Supply Unit for clearance prior to final pay. See OMS 504.03.

111.10 Non-Uniform Attire

- (1) Plainclothes: All on-duty officers who are authorized to wear attire other than a regulation uniform shall wear either business attire, utility attire, or undercover attire as approved and authorized by their Division Chief.
- (2) On-duty officers in plainclothes shall be armed at all times and carry the following items:
 - a. Badge
 - b. Police I.D.
 - c. Authorized holster and sidearm
 - d. A minimum of twelve (12) rounds of ammunition
 - e. Handcuffs
 - f. Handcuff key
 - g. Police radio – It is not a requirement that the radio be carried at all times by plainclothes personnel, however the officer's issued radio shall be available at all times.
 - h. Personnel actively involved in an authorized undercover operation may be exempt from these provisions with the authorization of the Operation Commander. See OMS 104.55(6).
- (3) Plainclothes personnel shall have available a jacket or other attire which clearly identifies them as a police officer. The garment is meant to be worn as the outermost garment on the upper part of the body.

- a. Attire that would meet the requirements of this section includes:
 - 1. Raid type jackets with DPD cloth badge with the lettering "POLICE" on both front and back.
 - 2. Protective Vests with DPD cloth badge with the lettering "POLICE" on both front and back.
- b. During rapidly evolving emergency or tactical situations, plainclothes officers should don the identifying attire as soon as they can do so safely.
- c. Plainclothes personnel involved in pre-planned tactical operations shall wear the identifying garment for the duration of the operation.
- d. Plainclothes personnel involved in stakeouts or undercover operations may cover the identifying attire with other garments if those garments can be easily and immediately discarded in an emergency.
- e. The identifying garment may be worn at crime scenes or when supervisors or commanders deem it appropriate.

(4) Safety Considerations

- a. When arriving at a crime in progress or unfolding tactical emergency plainclothes officers shall advise the dispatcher that they are on scene in plainclothes. They should provide a description of themselves for the benefit of responding uniform personnel.
- b. Plainclothes officers should immediately identify themselves to responding uniform personnel who may not recognize the plainclothes officer.
- c. If challenged by uniform personnel, plainclothes officers should follow the officer's directions precisely and only reach for credentials or other identifying items when told to do so.

