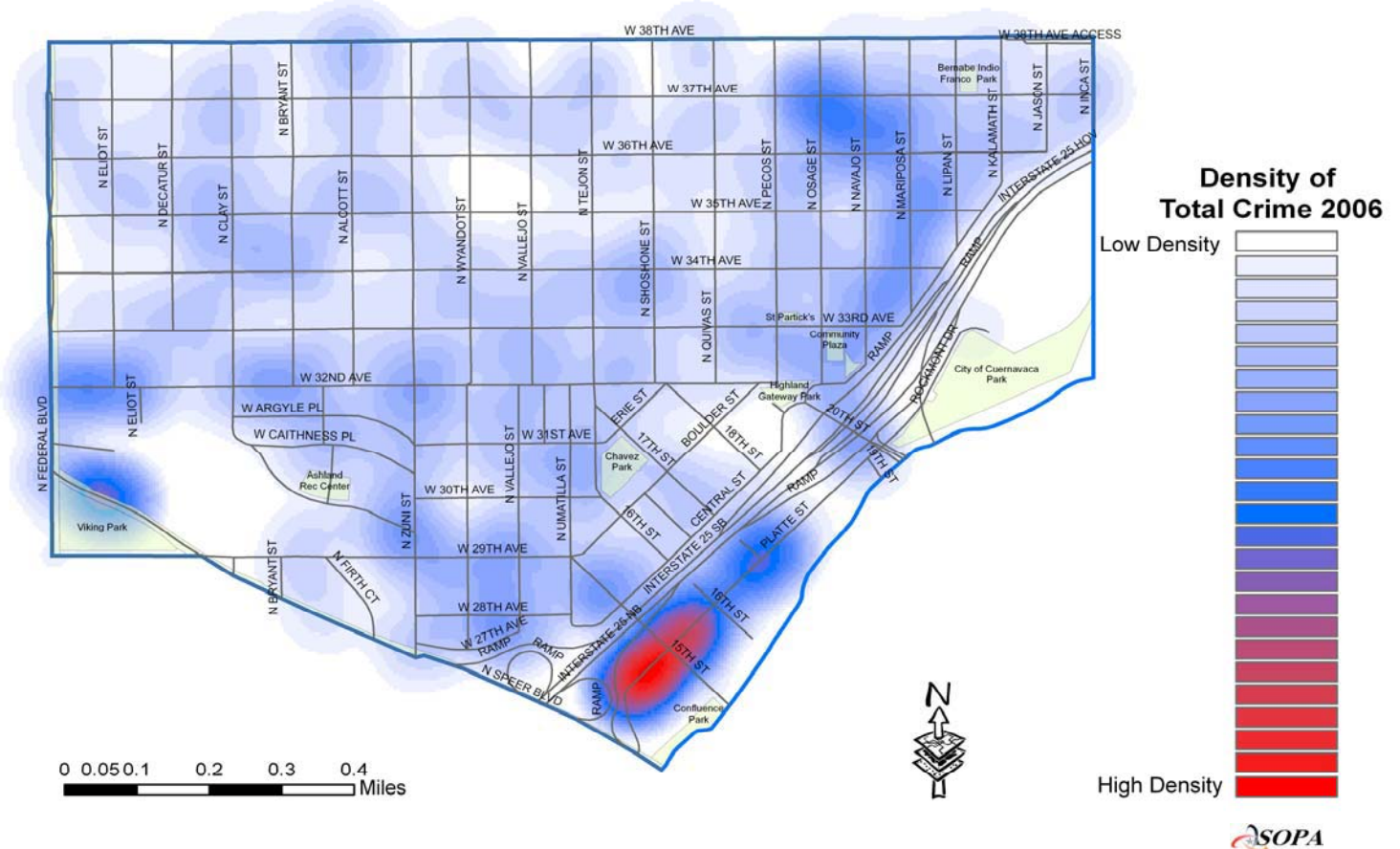


HIGHLAND REPORTED OFFENSES

HIGHLAND

TYPE OF CRIME		2005		2006		CHANGE	
		#	%	#	%	#	%
Part 1 Persons	Homicide	1	0.1%	0	0.0%	-1	-100.0%
	Sexual Assault	5	0.5%	6	0.7%	1	20.0%
	Robbery	27	2.7%	18	2.1%	-9	-33.3%
	Aggravated Assault	60	6.1%	47	5.4%	-13	-21.7%
SUBTOTAL		93	9.5%	71	8.2%	-22	-23.7%
Part 1 Property	Burglary	122	12.4%	112	12.9%	-10	-8.2%
	Larceny (Except Theft from Motor Veh)	104	10.6%	115	13.2%	11	10.6%
	Larceny (Theft from Motor Vehicle)	254	25.8%	165	18.9%	-89	-35.0%
	Auto Theft	122	12.4%	110	12.6%	-12	-9.8%
	Arson	6	0.6%	0	0.0%	-6	-100.0%
SUBTOTAL		608	61.9%	502	57.6%	-106	-17.4%
PART 1 TOTAL		701	71.3%	573	65.8%	-128	-18.3%
Other Crimes Against Persons	Other Assaults	25	2.5%	34	3.9%	9	36.0%
	Other Sex Offenses	15	1.5%	8	0.9%	-7	-46.7%
	Against Family/Child	4	0.4%	5	0.6%	1	25.0%
SUBTOTAL		44	4.5%	47	5.4%	3	6.8%
Public Disorder Crimes	Criminal Mischief	137	13.9%	150	17.2%	13	9.5%
	Prostitution and Commercialized Vice	0	0.0%	0	0.0%	0	NA
	Disorderly Conduct	17	1.7%	8	0.9%	-9	-52.9%
SUBTOTAL		154	15.7%	158	18.1%	4	2.6%
Drug and Alcohol	Drug Abuse Violations	40	4.1%	49	5.6%	9	22.5%
	Liquor Law Violations	0	0.0%	0	0.0%	0	NA
SUBTOTAL		40	4.1%	49	5.6%	9	22.5%
White Collar Crimes	Forgery and Counterfeiting	2	0.2%	3	0.3%	1	50.0%
	Fraud	12	1.2%	11	1.3%	-1	-8.3%
	Embezzlement	0	0.0%	2	0.2%	2	NA
SUBTOTAL		14	1.4%	16	1.8%	2	14.3%
All Other Crimes	Stolen Property	1	0.1%	1	0.1%	0	0.0%
	Weapons	6	0.6%	8	0.9%	2	33.3%
	All Other Offenses	23	2.3%	19	2.2%	-4	-17.4%
SUBTOTAL		30	3.1%	28	3.2%	-2	-6.7%
PART 2 TOTAL		282	28.7%	298	34.2%	16	5.7%
TOTAL		983	100.0%	871	100.0%	-112	-11.4%



All files utilized in the creation of this report are dynamic. Dynamic files allow additions, deletions and/or modifications at any time, resulting in more complete and accurate records in the databases. Due to continuous data entry after reports are compiled, numbers may vary in previous or subsequent reports. Data downloaded 1/26/07.

