



**STATISTICAL**

# Contents

This part of the City and County of Denver's comprehensive annual financial report presents detailed information as a context for understanding what the information in the financial statements, note disclosures, and required supplementary information says about the government's overall financial health.

## **135 FINANCIAL TRENDS**

These schedules contain trend information to help the reader understand how the City's Financial performance and well-being have changed over time.

## **144 REVENUE CAPACITY**

These schedules contain information to help the reader assess the City's most significant local revenue source, the sales tax.

## **148 DEBT CAPACITY**

These schedules present information to help the reader assess the affordability of the City's current levels of outstanding debt and the City's ability to issue additional debt in the future.

## **156 DEMOGRAPHIC AND ECONOMIC INFORMATION**

These schedules offer demographic and economic indicators to help the reader understand the environment within which the City's financial activities take place.

## **159 OPERATING INFORMATION**

These schedules contain service and infrastructure data to help the reader understand how the information in the City's financial report relates to the services the City provides and the activities it performs.

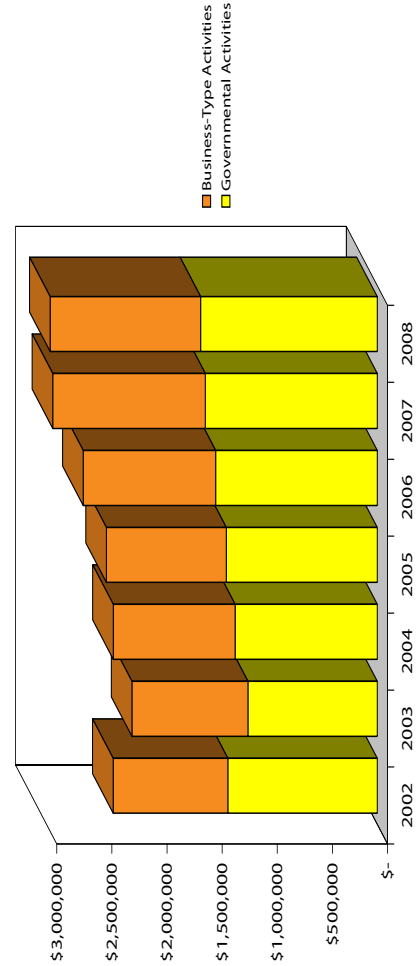
This page left blank intentionally.

## Net Assets by Component

Last Seven Fiscal Years\* (dollars in thousands - accrual basis of accounting)

	2002	2003	2004	2005	2006	2007	2008
<b>Governmental activities</b>							
Invested in capital assets, net of related debt	\$ 644,804	\$ 744,167	\$ 869,239	\$ 958,776	\$ 922,261	\$ 1,170,496	\$ 1,238,768
Restricted	82,085	85,203	173,850	212,958	168,361	274,159	340,270
Unrestricted	627,471	343,468	245,817	197,074	374,913	115,047	22,243
<b>Total governmental activities net assets</b>	<b>\$ 1,354,360</b>	<b>\$ 1,172,838</b>	<b>\$ 1,288,906</b>	<b>\$ 1,368,808</b>	<b>\$ 1,465,535</b>	<b>\$ 1,559,702</b>	<b>\$ 1,601,281</b>
<b>Business-type activities</b>							
Invested in capital assets, net of related debt	\$ 169,337	\$ 92,613	\$ 149,591	\$ 84,598	\$ 171,814	\$ 317,488	\$ 262,385
Restricted	379,620	459,196	496,591	572,175	546,394	678,687	681,263
Unrestricted	491,327	499,679	459,387	431,008	483,427	387,282	421,159
<b>Total business-type activities net assets</b>	<b>\$ 1,040,284</b>	<b>\$ 1,051,488</b>	<b>\$ 1,105,569</b>	<b>\$ 1,087,781</b>	<b>\$ 1,201,635</b>	<b>\$ 1,383,457</b>	<b>\$ 1,364,807</b>
<b>Primary government</b>							
Invested in capital assets, net of related debt	\$ 814,141	\$ 836,780	\$ 1,018,830	\$ 1,043,374	\$ 1,094,075	\$ 1,487,984	\$ 1,501,153
Restricted	461,705	544,399	670,441	785,133	714,755	952,846	1,021,533
Unrestricted	1,118,798	843,147	705,204	628,082	858,340	502,329	443,402
<b>Total primary government net assets</b>	<b>\$ 2,394,644</b>	<b>\$ 2,224,326</b>	<b>\$ 2,394,475</b>	<b>\$ 2,456,589</b>	<b>\$ 2,667,170</b>	<b>\$ 2,943,159</b>	<b>\$ 2,966,088</b>

Primary Government Net Assets



\*The requirement for statistical data is ten years; only seven years are available at this time.

### Changes in Net Assets

Last Seven Fiscal Years\* (dollars in thousands - accrual basis of accounting)

	2002	2003	2004	2005	2006	2007	2008
<b>Expenses</b>							
<b>Governmental activities:</b>							
General government	\$ 272,095	\$ 185,756	\$ 187,616	\$ 210,158	\$ 214,976	\$ 262,209	\$ 257,780
Public safety	371,437	363,706	365,856	428,094	435,094	475,728	536,382
Public works	129,251	99,233	92,968	104,375	103,687	79,496	134,698
Human services	118,171	107,614	100,488	98,766	112,754	132,535	139,895
Health	49,559	194,221	46,132	50,222	47,776	45,345	52,332
Parks and recreation	73,299	63,166	61,025	58,866	64,003	63,778	105,232
Cultural activities	87,960	82,313	73,912	66,188	86,490	89,967	62,499
Community development	45,078	67,185	38,013	36,864	31,964	47,098	39,945
Economic opportunity	24,357	22,803	19,417	18,723	20,362	26,280	31,647
Interest on long-term debt	31,857	44,843	54,572	52,498	55,772	54,592	76,073
<b>Total governmental activities</b>	<b>1,203,064</b>	<b>1,230,840</b>	<b>1,039,999</b>	<b>1,124,734</b>	<b>1,172,878</b>	<b>1,277,028</b>	<b>1,436,483</b>
<b>Business-type activities:</b>							
Wastewater management	62,399	65,473	70,260	57,829	66,488	76,298	75,122
Denver airport system	596,076	588,437	588,126	686,315	617,250	679,022	780,501
Stadium	1,298	-	-	-	-	-	-
Environmental services	5,638	9,480	9,315	11,864	5,076	12,319	6,336
Golf course	7,707	7,462	6,856	7,535	8,279	6,570	8,252
<b>Total business-type activities</b>	<b>673,118</b>	<b>670,852</b>	<b>674,557</b>	<b>763,543</b>	<b>697,093</b>	<b>774,209</b>	<b>870,211</b>
<b>Total primary government expenses</b>	<b>\$ 1,876,182</b>	<b>\$ 1,901,692</b>	<b>\$ 1,714,556</b>	<b>\$ 1,888,297</b>	<b>\$ 1,869,971</b>	<b>\$ 2,051,237</b>	<b>\$ 2,306,694</b>
<b>Program Revenues</b>							
<b>Governmental activities:</b>							
Charges for services:							
General government	\$ 42,754	\$ 47,395	\$ 58,075	\$ 66,067	\$ 71,106	\$ 51,541	\$ 76,106
Public safety	51,556	52,897	52,738	56,666	62,015	64,802	67,396
Public works	38,449	39,010	38,094	35,163	41,541	39,439	50,812
Community development	17,414	18,413	17,660	19,246	20,357	23,202	19,288
Other activities	40,800	27,546	25,177	25,992	36,088	38,044	47,862
<b>Operating grants and contributions:</b>							
General government	16,447	16,116	15,862	14,731	18,210	18,578	19,356
Public safety	21,846	18,547	24,311	31,990	25,487	29,266	69,663
Public works	24,285	21,444	22,023	20,833	29,432	32,333	29,902
Human services	83,280	71,070	64,459	63,135	76,593	82,879	82,004
Community development	55,058	35,518	36,991	18,138	15,859	26,151	19,282
Other activities	23,835	24,826	21,122	18,430	22,429	22,373	27,653
<b>Capital grants and contributions:</b>							
Public works	7,619	5,597	12,485	37,517	42,078	9,207	8,822
Other activities	7,549	8,216	25,303	14,008	15,828	16,809	7,997
<b>Total governmental activities program revenues</b>	<b>430,892</b>	<b>386,595</b>	<b>414,300</b>	<b>421,916</b>	<b>477,023</b>	<b>454,624</b>	<b>526,143</b>

continued

## Changes in Net Assets - continued

Last Seven Fiscal Years\* (dollars in thousands - accrual basis of accounting)

	2002	2003	2004	2005	2006	2007	2008
<b>Business-type activities:</b>							
Charges for services:							
Wastewater enterprises	64,113	65,827	67,091	70,220	73,684	75,750	76,590
Denver airport system	435,523	438,345	477,665	494,491	500,810	530,151	540,760
Other activities	13,668	11,923	13,290	14,512	14,609	16,773	15,936
Operating grants and contributions:							
Denver airport system	67,304	63,674	62,304	84,240	94,076	97,515	106,173
Capital grants and contributions:							
Wastewater enterprises	7,357	15,205	13,509	10,727	7,202	9,906	7,690
Denver airport system	91,152	40,542	62,205	31,547	29,188	2,426	14,392
<b>Total business-type activities program revenues</b>	<b>679,117</b>	<b>635,516</b>	<b>696,064</b>	<b>705,737</b>	<b>719,569</b>	<b>732,521</b>	<b>761,541</b>
<b>Total primary government program revenues</b>	<b>\$ 1,110,009</b>	<b>\$ 1,022,111</b>	<b>\$ 1,110,364</b>	<b>\$ 1,127,653</b>	<b>\$ 1,196,592</b>	<b>\$ 1,187,145</b>	<b>\$ 1,287,684</b>
<b>General Revenues and Other Changes in Net Assets</b>							
<b>Governmental activities:</b>							
Taxes:							
Property	\$ 139,112	\$ 148,213	\$ 179,497	\$ 212,778	\$ 217,119	\$ 227,188	\$ 274,809
Sales and use	394,160	385,361	381,891	412,288	420,693	455,436	468,137
Other	114,262	117,304	117,162	110,918	121,539	151,387	136,211
Investment and interest income	30,695	12,473	14,449	16,612	26,287	39,990	34,340
Other revenue	27,589	28,888	48,428	30,026	35,442	40,309	38,157
Special item loss on revised capital lease	-	(27,985)	-	-	-	-	-
Transfers	10,508	756	340	118	(28,498)	2,261	265
<b>Total governmental activities</b>	<b>716,326</b>	<b>665,010</b>	<b>741,767</b>	<b>782,740</b>	<b>792,582</b>	<b>916,571</b>	<b>951,919</b>
<b>Business-type activities:</b>							
Investment and interest income	46,353	27,626	24,982	39,760	62,814	87,885	90,279
Other revenue	8,722	19,670	7,932	376	66	33	6
Transfers	(10,508)	(756)	(340)	(118)	28,498	(2,261)	(265)
<b>Total business-type activities</b>	<b>44,567</b>	<b>46,540</b>	<b>32,574</b>	<b>40,018</b>	<b>91,378</b>	<b>85,657</b>	<b>90,020</b>
<b>Total General Revenues and Other Changes in Net Assets</b>	<b>\$ 760,893</b>	<b>\$ 711,550</b>	<b>\$ 774,341</b>	<b>\$ 822,758</b>	<b>\$ 883,960</b>	<b>\$ 1,002,228</b>	<b>\$ 1,041,939</b>
<b>Changes in Net Assets</b>							
Governmental activities	\$ (55,846)	\$ (179,235)	\$ 116,068	\$ 79,902	\$ 96,727	\$ 94,167	\$ 41,579
Business activities	50,566	11,204	54,081	(17,788)	113,854	43,969	(18,650)
<b>Total primary government</b>	<b>\$ (5,280)</b>	<b>\$ (168,031)</b>	<b>\$ 170,149</b>	<b>\$ 62,114</b>	<b>\$ 210,581</b>	<b>\$ 138,136</b>	<b>\$ 22,929</b>

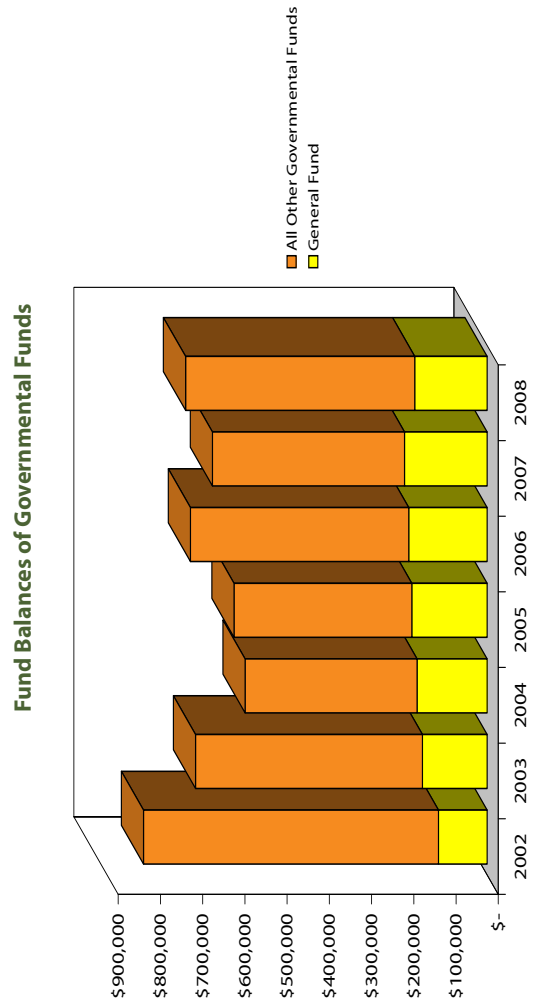
\*The requirement for statistical data is ten years; only seven years are available at this time.

This page left blank intentionally.

### Fund Balances of Governmental Funds

Last Seven Fiscal Years\* (dollars in thousands - modified accrual basis of accounting)

	2002	2003	2004	2005	2006	2007	2008
<b>General Fund</b>							
Reserved	\$ 37,410	\$ 64,450	\$ 58,838	\$ 57,938	\$ 56,842	\$ 40,817	\$ 21,887
Unreserved	77,928	88,857	107,123	120,632	128,814	154,774	149,562
<b>Total General Fund</b>	<b>\$ 115,338</b>	<b>\$ 153,307</b>	<b>\$ 165,961</b>	<b>\$ 178,570</b>	<b>\$ 185,656</b>	<b>\$ 195,591</b>	<b>\$ 171,449</b>
<b>All other governmental funds</b>							
Reserved	\$ 436,583	\$ 395,899	\$ 256,762	\$ 242,792	\$ 278,996	\$ 338,498	\$ 183,353
Unreserved:							
Special revenue funds	64,190	68,058	87,541	64,599	61,626	96,139	97,139
Capital projects funds	194,361	70,016	59,542	110,099	172,918	16,871	258,295
Permanent funds	3,167	3,147	3,359	3,412	3,285	3,387	3,936
<b>Total all other governmental funds</b>	<b>\$ 698,301</b>	<b>\$ 537,120</b>	<b>\$ 407,204</b>	<b>\$ 420,902</b>	<b>\$ 516,825</b>	<b>\$ 454,895</b>	<b>\$ 542,723</b>



\*The requirement for statistical data is ten years; only seven years are available at this time.

## Changes in Fund Balances of Governmental Funds

Last Seven Fiscal Years\* (dollars in thousands - modified accrual basis of accounting)

	2002	2003	2004	2005	2006	2007	2008
<b>Revenues</b>							
Property taxes	\$ 139,112	\$ 148,213	\$ 179,497	\$ 212,778	\$ 217,119	\$ 227,188	\$ 274,809
Sales and use taxes	394,160	385,361	381,891	417,079	420,693	455,436	468,137
Other taxes	113,307	116,308	116,507	123,326	121,539	150,017	136,211
Special assessments	955	996	655	1,467	1,359	1,370	1,394
Licenses and permits	17,358	21,401	23,667	26,173	27,438	29,383	29,364
Intergovernmental revenues	202,427	177,461	192,256	170,760	188,010	211,351	247,386
Charges for services	123,794	128,264	130,888	121,920	160,030	156,564	189,494
Investment and interest income	30,695	12,473	14,449	16,612	26,287	39,990	34,340
Fines and forfeitures	33,338	33,559	33,512	32,844	36,856	37,013	41,473
Contributions	3,130	7,009	18,951	13,698	15,871	8,668	9,022
Other revenue	61,457	52,247	37,520	26,729	38,246	40,376	40,167
<b>Total revenues</b>	<b>1,119,733</b>	<b>1,083,292</b>	<b>1,129,793</b>	<b>1,163,386</b>	<b>1,253,448</b>	<b>1,357,356</b>	<b>1,471,797</b>
<b>Expenditures</b>							
General government	218,320	183,328	166,375	170,543	203,266	236,694	255,008
Public safety	353,887	352,755	364,355	427,634	437,632	470,978	534,984
Public works	79,012	74,641	67,957	69,247	74,339	96,313	125,668
Human services	120,481	105,784	98,234	98,041	112,112	129,451	139,013
Health	47,856	46,138	45,767	46,533	47,739	48,694	52,191
Parks and recreation	45,112	51,707	48,840	50,224	52,297	59,791	100,928
Cultural activities	60,680	52,560	54,226	66,901	81,307	72,974	40,826
Community development	45,796	54,955	44,273	41,062	34,069	53,877	37,808
Economic opportunity	24,369	22,551	19,130	17,702	20,512	26,122	31,486
Principal retirement	44,175	84,540	66,784	88,669	79,837	81,685	70,807
Interest	30,524	38,884	56,037	52,227	56,525	53,387	82,598
Bond issue costs	-	-	297	205	1	421	833
Capital outlay	234,944	497,190	211,182	102,394	88,695	95,821	210,430
<b>Total Expenditures</b>	<b>1,305,156</b>	<b>1,565,033</b>	<b>1,243,457</b>	<b>1,231,382</b>	<b>1,288,331</b>	<b>1,426,208</b>	<b>1,682,580</b>
Deficiency of revenues under expenditures	(185,423)	(481,741)	(113,664)	(67,996)	(34,883)	(68,852)	(210,783)

continued

### Changes in Fund Balances of Governmental Funds, continued

Last Seven Fiscal Years\* (dollars in thousands - modified accrual basis of accounting)

	2002	2003	2004	2005	2006	2007	2008
<b>Other financing sources (uses)</b>							
Proceeds from sale of capital assets	494	1,033	1,038	5,057	8	5,724	2,526
Developer advance	-	-	92	-	43	-	-
Repayment of developer advance	-	-	-	-	(375)	-	-
GID bonds issued	-	-	2,411	-	-	-	-
Payment to refunding escrow	-	-	(2,287)	(165,529)	-	-	-
Proceeds from certificates of participation	32,530	63,330	-	-	-	-	-
Excise tax revenue bonds issue	-	28,245	-	149,190	-	-	-
Capital leases	-	55,160	3,808	62,342	-	-	20,780
Refunding of capital lease	-	-	-	(55,985)	-	-	-
Capital leases restructured	-	-	-	-	-	-	260,000
Payment to escrow	-	-	-	-	-	-	(250,290)
Commercial paper issued	-	-	-	-	-	-	38,000
Other financing sources	33	-	-	-	-	-	-
General obligation bonds issued	52,500	183,000	-	77,000	125,000	8,861	174,135
Bond premium	-	20,297	-	21,296	10,408	-	17,407
Proceeds from sale of registered coupons	-	-	-	-	-	-	11,610
Insurance recoveries	-	-	-	397	99	11	86
Transfers in	117,338	111,527	81,200	92,325	79,514	85,346	111,590
Transfers out	(113,604)	(124,171)	(89,860)	(91,790)	(76,805)	(83,085)	(111,375)
<b>Total other financing sources (uses)</b>	<b>89,291</b>	<b>338,421</b>	<b>(3,598)</b>	<b>94,303</b>	<b>137,892</b>	<b>16,857</b>	<b>274,469</b>
<b>Net change in fund balances</b>	<b>\$ (96,132)</b>	<b>\$ (143,320)</b>	<b>\$ (117,262)</b>	<b>\$ 26,307</b>	<b>\$ 103,009</b>	<b>\$ (51,995)</b>	<b>\$ 63,686</b>
Debt service as a percentage of noncapital expenditures	6.3%	9.7%	12.2%	12.1%	11.1%	10.7%	10.8%

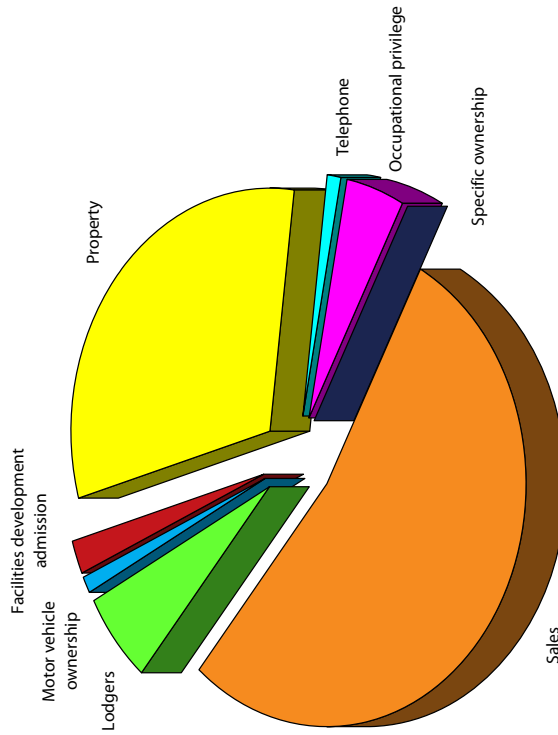
\* The requirement for statistical data is ten years; only seven years are available at this time.

### Governmental Activities Tax Revenues by Source

Last Seven Fiscal Years\* (dollars in thousands - modified accrual basis of accounting)

Taxes	2002	2003	2004	2005	2006	2007	2008
Facilities development admission	\$ 7,729	\$ 8,181	\$ 7,637	\$ 9,174	\$ 9,761	\$ 10,092	\$ 10,016
Lodgers	27,340	27,333	28,036	32,725	43,258	49,651	53,773
Motor vehicle ownership fee	14,894	15,476	16,655	16,815	15,884	16,963	19,514
Occupational privilege	41,026	41,191	40,138	41,500	41,502	42,751	43,040
Property	139,400	148,410	179,826	212,778	217,119	227,188	274,809
Sales	394,160	385,361	381,891	412,288	420,693	455,436	468,137
Specific ownership	57	58	59	62	60	64	54
Taxicab operators	71	31	35	-	-	-	-
Telephone	9,376	9,075	7,422	9,175	11,074	9,918	9,814
<b>Total primary government taxes</b>	<b>\$ 634,053</b>	<b>\$ 635,116</b>	<b>\$ 661,699</b>	<b>\$ 734,517</b>	<b>\$ 759,351</b>	<b>\$ 812,063</b>	<b>\$ 879,157</b>

2008 Tax Revenues by Source



**Note:** 2006, 2007, and 2008 property taxes include taxes of \$28,725,000, \$28,990,000 and \$30,135,000 for Fire and Police Pension Association. This was previously disclosed in the agency funds.

\*The requirement for statistical data is ten years; only seven years are available at this time.

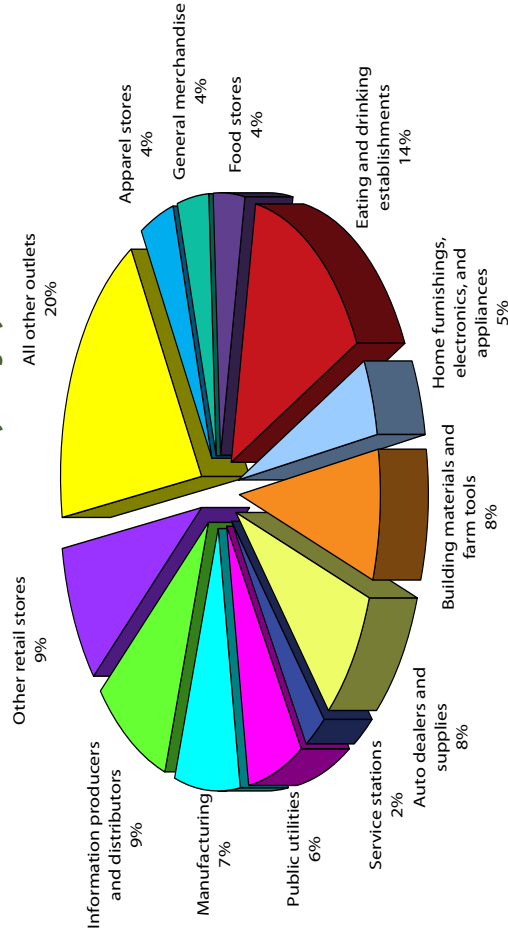
### Sales Tax by Category

Last Ten Calendar Years (dollars in thousands)

	1999	2000	2001	2002	2003	2004	2005	2006	2007	2008
Apparel stores	\$ 9,964	\$ 10,375	\$ 10,682	\$ 10,699	\$ 10,676	\$ 14,380	\$ 15,207	\$ 15,179	\$ 16,474	\$ 17,691
General merchandise	17,581	18,500	17,970	17,755	18,077	16,583	16,356	16,892	16,209	16,953
Food stores	9,917	9,641	10,234	9,649	9,441	15,420	15,845	16,729	16,210	17,961
Eating and drinking establishments	56,665	58,424	60,022	61,427	62,948	53,763	56,824	60,252	60,097	67,878
Home furnishings, electronics and appliances	67,335	75,208	76,908	65,422	71,162	17,727	20,255	21,268	21,543	22,461
Building materials and farm tools	36,795	38,984	40,847	45,944	42,225	35,058	39,322	39,353	35,826	37,741
Auto dealers and supplies	68,289	75,824	77,657	70,827	71,332	40,394	38,860	38,093	38,350	39,584
Service stations	-	-	-	-	-	14,597	13,390	13,702	11,942	10,719
Public utilities	-	-	-	-	-	21,928	24,598	25,068	24,503	30,145
Manufacturing	-	-	-	-	-	31,124	33,720	35,808	34,033	34,947
Information producers and distributors	-	-	-	-	-	34,329	37,376	39,768	36,164	41,431
Other retail stores	128,956	176,840	146,777	112,437	99,500	28,409	27,543	25,506	44,383	40,913
All other outlets	-	-	-	-	-	58,179	77,783	73,075	99,702	89,713
<b>Total</b>	<b>\$ 395,502</b>	<b>\$ 463,796</b>	<b>\$ 441,097</b>	<b>\$ 394,160</b>	<b>\$ 385,361</b>	<b>\$ 381,891</b>	<b>\$ 417,079</b>	<b>\$ 420,693</b>	<b>\$ 455,436</b>	<b>\$ 468,137</b>

City direct sales tax rate 3.5% 3.5% 3.5% 3.5% 3.5% 3.5% 3.5% 3.5% 3.5% 3.5%

2008 Sales Tax by Category



**Note:** Beginning in 2003 data was tracked by NAICS code rather than SIC code and the number of categories was expanded in order to provide more detail when tracking revenues. This change was not done retroactively, so data in 2003 and prior has no corresponding NAICS information for these categories.

**Source:** Denver Controller's Office

**Assessed Value and Estimated Actual Value of Taxable Property**

Last Ten Fiscal Years (dollars in thousands)

	1999	2000	2001	2002	2003	2004	2005	2006	2007	2008
Vacant property	\$ 104,289	\$ 95,301	\$ 107,816	\$ 98,117	\$ 157,090	\$ 141,131	\$ 185,080	\$ 172,889	\$ 198,284	\$ 210,633
Residential property	2,575,404	2,645,155	3,359,931	3,432,857	3,583,839	3,669,393	3,840,654	3,933,051	4,394,658	4,510,588
Commercial property	2,252,828	2,284,608	2,830,244	2,868,476	3,107,218	3,134,198	3,304,533	3,340,741	4,372,532	4,383,397
Industrial property	102,992	102,015	110,394	109,900	121,464	116,022	122,717	120,660	130,130	125,108
Agricultural property	325	332	39	35	77	40	288	49	113	56
Oil and gas property	-	21	1,828	935	898	761	929	1,043	1,279	3,286
Personal property	703,529	743,538	760,173	705,114	726,988	728,422	728,843	715,287	779,600	792,393
State assessed property	559,155	620,867	715,041	785,876	734,170	743,202	760,124	750,830	784,031	837,783
<b>Total taxable assessed value</b>	<b>\$ 6,298,522</b>	<b>\$ 6,491,837</b>	<b>\$ 7,885,466</b>	<b>\$ 8,001,310</b>	<b>\$ 8,431,744</b>	<b>\$ 8,533,169</b>	<b>\$ 8,943,168</b>	<b>\$ 9,034,550</b>	<b>\$ 10,660,627</b>	<b>\$ 10,863,244</b>
Total direct tax rate	67.299	67.321	58.745	59.855	64.162	64.402	66.202	66.948	66.897	66.783
<b>Estimated actual taxable value</b>	<b>\$ 39,279,855</b>	<b>\$ 40,422,071</b>	<b>\$ 52,321,631</b>	<b>\$ 53,268,701</b>	<b>\$ 61,738,950</b>	<b>\$ 62,867,794</b>	<b>\$ 65,842,159</b>	<b>\$ 66,999,158</b>	<b>\$ 76,813,114</b>	<b>\$ 78,563,808</b>
Assessed value as a percentage of estimated actual value	16.0%	16.1%	15.1%	15.0%	13.7%	13.6%	13.6%	13.5%	13.9%	13.8%

**Note:** The TABOR amendment, which was approved by Colorado voters in 1992, requires all assessors to use only the market approach in valuing residential property. For commercial real property, the income approach is generally the appropriate method to use in estimating value. Under Colorado law, all assessors must reappraise real property every two years; this occurs in every odd-numbered year (2003, 2005, 2007, etc.). If home sales have been very active, and home prices have been increasing, then the property value and assessment for many types and styles of homes typically will increase during these reappraisals. Property tax is determined by the mill levy, which is set in December of each year by the taxing authorities in Denver (the school district, city council, special districts, etc.)

Taxable assessed values are reported net of tax-exempt property.

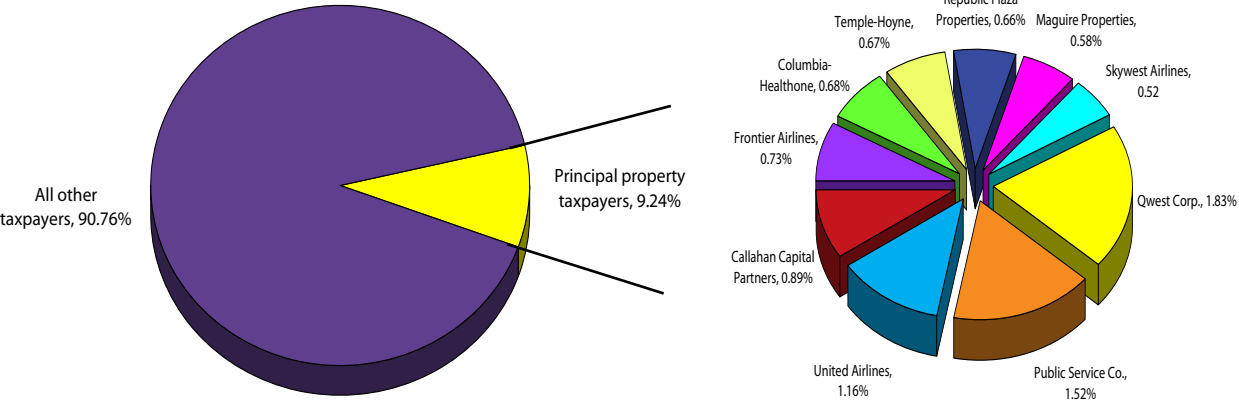
**Source:** Abstract of Assessment documents

### Principal Property Taxpayers

Current Year and Nine Years Ago (dollars in thousands)

Taxpayer	2008				1999			
	Taxable Assessed Value	Rank	Percentage of Total Taxable Assessed Value		Taxable Assessed Value	Rank	Percentage of Total Taxable Assessed Value	
Qwest Corp.	\$ 198,396	1	1.83%					
Public Service Co.	164,862	2	1.52%		\$ 133,732	2	2.12%	
United Airlines, Inc.	125,728	3	1.16%		116,032	3	1.84%	
Callahan Capital Partners	96,813	4	0.89%					
Frontier Airlines	78,783	5	0.73%					
Columbia-Healthone, LLC	74,173	6	0.68%		63,171	5	1.00%	
Temple-Hoyne Buell Foundation	73,060	7	0.67%		51,691	8	0.82%	
Republic Plaza Properties	71,261	8	0.66%		52,232	7	0.83%	
Maguire Properties - Denver Center, LLC	63,074	9	0.58%					
Skywest Airlines	56,395	10	0.52%					
U. S. West					164,752	1	2.62%	
Equity Office Properties					79,707	4	1.27%	
Crescent Real Estate Funding					61,195	6	0.97%	
Cornerstone Denver, LLC					31,388	9	0.50%	
Denver Plaza Associates, Ltd.					29,753	10	0.47%	
<b>Totals</b>	<b>\$ 1,002,545</b>		<b>9.24%</b>		<b>\$ 783,653</b>		<b>12.44%</b>	

2008 Principal Property Taxpayers



Source: Denver County Assessor

**Property Tax Levies and Collections**

Last Ten Fiscal Years (dollars in thousands)

		Prepaid amounts collected within the fiscal year of the levy		Amount collected in year due		Percentage of levy prepaid and collected in year due		Collections in subsequent years <sup>1</sup>		Total collections to date	
	Taxes levied									Amount	Percentage of levy
<b>General Fund</b>											
1999	61,938	\$	483	\$	61,167	99.54%		(178)	\$	61,472	99.25%
2000	63,456		445		62,549	99.27%		317		63,311	99.77%
2001	67,297		574		66,033	98.97%		132		66,739	99.17%
2002	69,763		563		67,394	97.41%		1,265		69,222	99.22%
2003	72,151		529		70,800	98.86%		(135)		71,194	98.67%
2004	73,536		462		72,317	98.97%		1		72,780	98.97%
2005	75,646		561		74,192	98.82%		(227)		74,526	98.52%
2006	79,818		571		78,698	99.31%		(132)		79,137	99.15%
2007	63,216		437		62,213	99.10%		-		62,650	99.10%
2008	65,079		510	n/a		0.78%					-
<b>Bond Principal Fund</b>											
1999	29,279	\$	228	\$	28,915	99.54%		(84)	\$	29,059	99.25%
2000	29,997		211		29,567	99.27%		150		29,928	99.77%
2001	31,424		268		30,838	98.99%		58		31,164	99.17%
2002	36,189		292		34,957	97.40%		659		35,908	99.22%
2003	50,995		374		50,040	98.86%		(95)		50,319	98.67%
2004	51,348		323		50,494	98.97%		3		50,820	98.97%
2005	53,381		396		52,355	98.82%		(160)		52,591	98.52%
2006	59,356		425		58,523	99.31%		(98)		58,850	99.15%
2007	47,618		329		46,862	99.10%		-		47,191	99.10%
2008	45,532		357	n/a		0.78%					-
<b>Bond Interest Fund</b>											
1999	14,051	\$	110	\$	13,876	99.54%		(40)	\$	13,946	99.25%
2000	14,396		101		14,190	99.27%		72		14,363	99.77%
2001	10,406		89		10,212	98.99%		18		10,319	99.16%
2002	13,619		109		13,157	97.41%		248		13,514	99.23%
2003	17,922		131		17,586	98.86%		(33)		17,684	98.67%
2004	18,046		113		17,746	98.96%		1		17,860	98.97%
2005	18,668		138		18,310	98.82%		(56)		18,392	98.52%
2006	12,842		92		12,662	99.31%		(21)		12,733	99.15%
2007	36,921		255		36,336	99.11%		-		36,591	99.11%
2008	31,679		248	n/a		0.78%					-

continued

## Property Tax Levies and Collections, continued

Last Ten Fiscal Years (dollars in thousands)

Human Services Fund											
Taxes levied	Prepaid amounts collected within the fiscal year of the levy	Amount collected in year due	Percentage of levy prepaid and collected in year due	Collections in subsequent years <sup>1</sup>	Total collections to date						
					Amount	Percentage of levy	Cancellations <sup>2</sup>				
1999	27,818	\$ 27,472	99.54%	(80)	\$ 27,609	99.25%	\$ 18				
2000	28,500	28,093	99.27%	142	28,435	99.77%	52				
2001	30,224	29,672	99.03%	43	29,973	99.17%					
2002	31,325	30,258	97.40%	571	31,082	99.22%					
2003	39,420	38,681	98.86%	(73)	38,897	98.67%					
2004	40,077	39,411	98.97%	3	39,666	98.97%					
2005	41,334	40,541	98.82%	(124)	40,723	98.52%					
2006	42,841	42,281	99.31%	(71)	42,475	99.15%					
2007	46,545	45,806	99.10%	-	46,128	99.10%					
2008	47,966	n/a	0.78%	-	-	-	-				

Capital Improvement and Maintenance Funds											
Taxes levied	Prepaid amounts collected within the fiscal year of the levy	Amount collected in year due	Percentage of levy prepaid and collected in year due	Collections in subsequent years <sup>1</sup>	Total collections to date						
					Amount	Percentage of levy	Cancellations <sup>2</sup>				
1999	-	\$ -	-	-	-	-	\$ -				
2000	-	-	-	-	-	-	-				
2001	-	-	-	-	-	-	-				
2002	-	-	-	-	-	-	-				
2003	-	-	-	-	-	-	-				
2004	-	-	-	-	-	-	-				
2005	-	-	-	-	-	-	-				
2006	-	-	-	-	-	-	-				
2007	47,969	47,208	99.11%	-	47,540	99.11%	-				
2008	49,402	n/a	0.78%	-	-	-	-				

Total											
Taxes levied	Prepaid amounts collected within the fiscal year of the levy	Amount collected in year due	Percentage of levy prepaid and collected in year due	Collections in subsequent years <sup>1</sup>	Total collections to date						
					Amount	Percentage of levy	Cancellations <sup>2</sup>				
1999	133,086	131,430	99.54%	(382)	132,086	99.25%	151				
2000	136,349	134,399	99.27%	681	136,037	99.77%	249				
2001	139,351	136,755	98.99%	251	138,195	99.17%					
2002	150,896	145,766	97.41%	2,743	149,726	99.22%					
2003	180,488	177,107	98.86%	(336)	178,094	98.67%					
2004	183,007	179,968	98.97%	8	181,126	98.97%					
2005	189,029	185,398	98.82%	(567)	186,232	98.52%					
2006	194,857	192,164	99.31%	(322)	193,195	99.15%					
2007	242,269	238,425	99.10%	-	240,100	99.10%					
2008	239,658	n/a	0.78%	-	-	-	-				

<sup>1</sup> Net of adjustments based upon the appeals process.

<sup>2</sup> Taxes are determined to be uncollectable after six (6) years from the date of becoming delinquent are cancelled as authorized by C.R.S. 39-10-114(2)(b).

**Note:** The property tax is certified by the City's Assessor on or before December 15 of each year, unless there is a special election. Property taxes are due and considered earned on January 1 following the year levied. The first and second halves become delinquent on March 1 and June 16, respectively.

**Source:** Denver Controller's Office

**Ratios of Outstanding Debt by Type**

Last Ten Fiscal Years (dollars in thousands)

	1999	2000	2001	2002	2003	2004	2005	2006	2007	2008
<b>Governmental Activities</b>										
General obligation bonds	\$ 303,114	\$ 295,740	\$ 268,226	\$ 280,505	\$ 424,524	\$ 378,977	\$ 404,667	\$ 472,309	\$ 422,924	\$ 551,680
Commercial paper notes	-	-	-	-	-	-	-	-	-	38,000
Special assessment bonds	2,275	1,495	975	885	460	290	260	-	-	-
Excise tax revenue bonds	122,065	115,715	367,635	358,575	343,840	335,205	320,585	313,920	304,105	290,930
Certificates of participation	64,907	85,115	133,253	161,551	217,970	208,610	-	-	-	-
Capital leases	22,187	212,031	209,129	204,992	256,034	257,399	445,429	430,477	416,914	435,306
Unamortized premium	-	-	-	2,172	21,557	19,901	39,116	40,415	35,646	46,672
Unamortized gain of refunding	-	-	-	-	-	-	3,062	2,852	2,642	2,432
Line of credit	-	-	-	-	11,915	11,915	8,996	5,209	735	770
Note payable	-	-	-	-	22,395	15,901	14,832	16,082	14,038	14,532
<b>Business-Type Activities</b>										
Revenue bonds	4,045,715	4,120,709	4,038,167	4,109,355	4,158,358	4,115,355	4,010,932	3,903,190	4,230,760	4,130,135
Unamortized (discount)/premium	(146,655)	(113,225)	(47,966)	(12,241)	(13,880)	(12,792)	9,660	39,317	58,554	63,637
Deferred loss (gain) on refunding	(110,177)	(158,573)	(225,536)	(261,404)	(252,165)	(244,015)	(275,305)	(301,054)	(303,121)	(295,180)
Capital leases	8,161	12,730	6,384	-	5,105	3,114	1,062	-	-	-
Certificates of participation	6,215	-	-	-	-	-	-	-	-	-
Notes payable	-	-	-	-	60,000	76,213	56,763	88,985	61,671	63,648
<b>Total primary government</b>	<b>\$ 4,317,807</b>	<b>\$ 4,571,737</b>	<b>\$ 4,750,267</b>	<b>\$ 4,844,390</b>	<b>\$ 5,256,113</b>	<b>\$ 5,166,073</b>	<b>\$ 5,040,059</b>	<b>\$ 5,011,702</b>	<b>\$ 5,244,868</b>	<b>\$ 5,342,562</b>
<b>Percentage of personal income</b>	22.43%	21.02%	20.18%	20.42%	21.68%	20.22%	18.93%	17.34%	16.95%	n/a
<b>Per capita</b>	8,508	8,243	8,413	8,610	9,263	9,023	8,694	8,604	8,859	8,860

**Note:** Details regarding the City's outstanding debt can be found in the notes to the financial statements.

### Ratios of General Bonded Debt Outstanding

Last Ten Fiscal Years (dollars in thousands, except per capita amount)

	1999	2000	2001	2002	2003	2004	2005	2006	2007	2008
General obligation bonds	\$ 303,114	\$ 295,740	\$ 268,226	\$ 280,505	\$ 424,524	\$ 378,977	\$ 404,667	\$ 472,309	\$ 422,924	\$ 551,679
Less amounts available in debt service fund	(28,608)	(28,607)	(25,469)	(22,029)	(18,450)	(23,485)	(23,683)	(19,288)	(19,930)	(21,751)
<b>Total</b>	<b>\$ 274,506</b>	<b>\$ 267,133</b>	<b>\$ 242,757</b>	<b>\$ 258,476</b>	<b>\$ 406,074</b>	<b>\$ 355,492</b>	<b>\$ 380,984</b>	<b>\$ 453,021</b>	<b>\$ 402,994</b>	<b>\$ 529,928</b>
Percentage of estimated actual taxable value of property	0.70%	0.66%	0.46%	0.49%	0.66%	0.57%	0.58%	0.68%	0.53%	0.67%
Per capita	\$ 541	\$ 482	\$ 430	\$ 459	\$ 716	\$ 621	\$ 657	\$ 778	\$ 681	\$ 885

**Note:** Details regarding the City outstanding debt can be found in the notes to the financial statement.

## Direct and Overlapping Governmental Activities Debt

December 31, 2008 (dollars in thousands)

	Debt Outstanding	Percentage Applicable	City and County of Denver Share of Debt
<b>Direct Debt</b>			
General long-term debt	\$ 892,466 <sup>1</sup>		
Denver Airport System bonds	3,868,114		
Wastewater Management bonds	24,318		
Golf bonds	6,160		
Water Board bonds	323,749		
<b>Gross Bonded Debt</b>	<b>5,114,807</b>		
Less self supporting-bonds:			
Gateway Village bonds	2,158		
Golf bonds	6,160		
Excise tax revenue bonds	300,629		
Denver Airport System bonds	3,868,114		
Wastewater Management bonds	24,318		
Water Board bonds	323,749		
Less amount reserved for long-term debt	21,751		
<b>Total Net Direct Debt</b>	<b>567,928</b>		
<b>Overlapping Debt</b>			
Denver Metropolitan Football Stadium District	115,418	30.2% <sup>2</sup>	\$34,856
Regional Transportation District	948,275	30.2% <sup>2</sup>	286,379
Metro Wastewater Reclamation District	69,266	35.0% <sup>3</sup>	24,243
School District #1	616,042	100.0%	616,042
<b>Total Overlapping Debt</b>	<b>1,749,001</b>		<b>961,520</b>
<b>Total Net Direct and Overlapping Debt</b>	<b>\$ 2,316,929</b>		<b>\$ 1,529,448</b>

<sup>1</sup> Does not include \$34,540 unamortized premium on general obligation bonds.

<sup>2</sup> Percentage calculated on estimated Scientific and Cultural Facilities District sales and use tax for Denver City and County compared to State total, per the Colorado Department of Revenue, Office of Research and Analysis.

<sup>3</sup> Percentage calculated on Denver's wastewater charges compared to the entire metro district per Metro Wastewater Reclamation District.

### Legal Debt Margin Information

Last Ten Fiscal Years (dollars in thousands)

#### Calculation of Legal Debt Margin for Fiscal Year 2008

Total Estimated Actual Valuation \$ 78,563,808

Maximum general obligation debt, limited to 3% of total valuation \$2,356,914

Outstanding bonds chargeable to limit 589,679

Less amount reserved for long-term debt 21,751

**Net chargeable to bond limit 567,928**

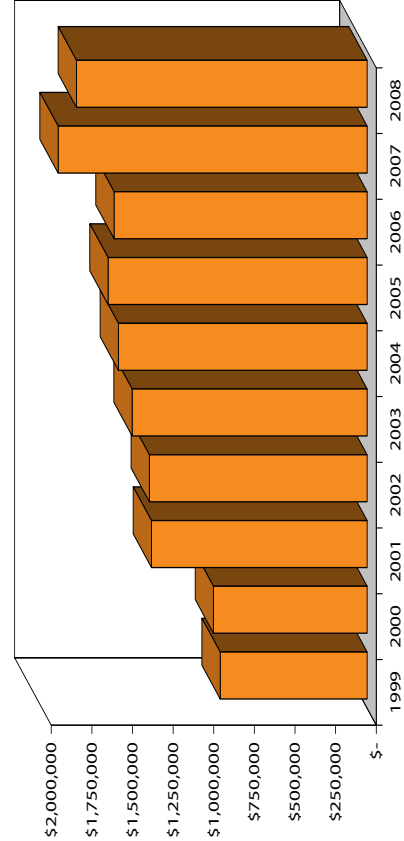
**Legal Debt Margin – December 31 \$1,788,986**

	1999	2000	2001	2002	2003	2004	2005	2006	2007	2008
Debt limit	\$ 1,178,396	\$ 1,212,662	\$ 1,569,649	\$ 1,598,061	\$ 1,852,139	\$ 1,886,034	\$ 1,975,265	\$ 2,009,975	\$ 2,304,393	\$2,356,914
Total net debt application to limit	274,506	267,133	242,757	258,476	406,074	355,492	380,984	453,021	402,994	567,928
<b>Legal debt margin</b>	<b>\$ 903,890</b>	<b>\$ 945,529</b>	<b>\$ 1,326,892</b>	<b>\$ 1,339,585</b>	<b>\$ 1,446,065</b>	<b>\$ 1,530,542</b>	<b>\$ 1,594,281</b>	<b>\$ 1,556,954</b>	<b>\$ 1,901,399</b>	<b>\$ 1,788,986</b>

**Total net debt applicable to the limit as a percentage of debt limit**

23.29%	22.03%	15.47%	16.17%	21.92%	18.85%	19.29%	22.54%	17.49%	24.10%
--------	--------	--------	--------	--------	--------	--------	--------	--------	--------

Legal Debt Margin



**Note:** Section 7.2.5, Charter of the City and County of Denver: The City and County of Denver shall not become indebted for general obligation bonds, to any amount, which, including indebtedness, shall exceed three percent of the actual value as determined by the last final assessment of the taxable property within the City and County of Denver.

**Convention Center Excise Pledged-Revenue Coverage**

Last Nine Fiscal Years\* (dollars in thousands)

	2000	2001	2002	2003	2004	2005	2006	2007	2008
Pledged lodger's tax revenues	\$ 10,005	\$ 9,099	\$ 8,418	\$ 8,359	\$ 8,626	\$ 10,068	\$ 12,074	\$ 13,857	\$ 15,006
Pledged food and beverage tax revenues	7,764	7,804	7,833	7,840	8,201	8,537	9,326	10,396	10,720
Pledged short-term auto rental tax revenues	6,632	6,164	5,876	5,776	6,103	6,673	7,116	7,957	7,721
Other sources	1,486	1,381	688	730	243	441	677	1,026	849
<b>Total pledged excise tax base</b>	<b>\$ 25,887</b>	<b>\$ 24,448</b>	<b>\$ 22,815</b>	<b>\$ 22,705</b>	<b>\$ 23,173</b>	<b>\$ 25,719</b>	<b>\$ 29,193</b>	<b>\$ 33,236</b>	<b>\$ 34,296</b>
Debt service (1999A bonds)	\$ 7,377	\$ 7,378	\$ 7,384	\$ 7,382	\$ 7,376	\$ 7,376	\$ 7,380	\$ 7,383	\$ 7,380
<b>Pledged excise tax base remaining after payment of 1999A bonds debt service</b>	<b>\$ 18,510</b>	<b>\$ 17,070</b>	<b>\$ 15,431</b>	<b>\$ 15,323</b>	<b>\$ 15,797</b>	<b>\$ 18,343</b>	<b>\$ 21,813</b>	<b>\$ 25,853</b>	<b>\$ 26,916</b>
Pledged short-term auto rental increase	5,753	5,380	5,110	5,066	5,353	5,552	6,227	6,962	6,756
Pledged lodgers' tax increase	5,653	5,262	4,907	4,874	5,032	5,875	7,043	8,083	8,754
<b>Available for Series 2001A, 2001B and 2005A Bonds debt service</b>	<b>\$ 29,916</b>	<b>\$ 27,712</b>	<b>\$ 25,448</b>	<b>\$ 25,263</b>	<b>\$ 26,182</b>	<b>\$ 29,770</b>	<b>\$ 35,083</b>	<b>\$ 40,898</b>	<b>\$ 42,426</b>
Debt service (2001A, 2001B and 2005A bonds)	\$ -	\$ 16,620	\$ 11,618	\$ 11,923	\$ 12,630	\$ 14,120	\$ 11,507	\$ 13,165	\$ 16,365
Coverage	3.51	1.67	2.19	2.12	2.07	2.11	3.05	3.11	2.59
Required coverage	1.25	1.25	1.25	1.25	1.25	1.25	1.25	1.25	1.25

**Note:** The pledged excise tax base is funded by portions of the lodger's tax (3%), short-term auto rental tax (2%), and food and beverage tax (.5%). The pledged excise tax base is used to pay the debt service on the series 1999A Excise Tax Bonds. The pledged excise tax increase is funded by portions of the lodger's tax (1.75%) and short-term auto rental tax (1.75%). The pledged excise tax increase can only be used to pay the 2001A, 2001B, and 2005A Excise Tax Bonds. Any deficiency in the pledged excise tax increase revenue is covered by excess funds in the pledged excise tax base. All of the bond issuances funded the expansion of the Colorado Convention Center.

### Wastewater Management Fund Pledged-Revenue Coverage

Last Seven Fiscal Years\* (dollars in thousands)

	2002	2003	2004	2005	2006	2007	2008
Net pledged revenues	\$ 21,660	\$ 26,540	\$ 22,800	\$ 24,144	\$ 22,873	\$ 14,993	\$ 16,013
Series 2002 combined average debt service requirements	\$ 2,467	\$ 2,451	\$ 2,446	\$ 2,441	\$ 2,449	\$ 2,450	\$ 2,387
Debt service coverage ratio	8.78	10.83	9.32	9.89	9.34	6.12	6.71
Required coverage	1.25	1.25	1.25	1.25	1.25	1.25	1.25

\*Wastewater bonds were issued in 2002

**Note:** The Wastewater Management bonds are secured by the net revenues derived from the operation of Wastewater Management's Storm Drainage Facilities and Sanitary Sewer Facilities.

### Golf Fund Pledged-Revenue Coverage

Last Seven Fiscal Years\* (dollars in thousands)

	2002	2003	2004	2005	2006	2007	2008
Net pledged revenues	n/a	n/a	n/a	n/a	\$ 628	\$ 2,590	\$ 1,114
Rate maintenance account	n/a	n/a	n/a	n/a	\$ 240	\$ 240	\$ 240
Available fund balance	n/a	n/a	n/a	n/a	\$ 10,432	\$ 12,507	\$ 12,883
Annual debt service requirement	n/a	n/a	n/a	n/a	\$ 684	\$ 687	\$ 682
Service coverage ratio	n/a	n/a	n/a	n/a	1.27	4.12	1.99
Required coverage	n/a	n/a	n/a	n/a	1.35	1.35	1.35

\*Golf bonds were issued in 2006

**Note:** The Golf bonds were issued to fund improvement to the City-owned golf courses and are secured by the gross revenues of the Golf Enterprise fund minus certain Operating and Maintenance Expenses.

## Occupational Privilege and Facilities Development Admission Excise Tax Pledged-Revenue Coverage

Last Ten Fiscal Years (dollars in thousands)

	1999	2000	2001	2002	2003	2004	2005	2006	2007	2008
Pledged occupational privilege tax (OPT) revenues	\$ 40,580	\$ 44,188	\$ 43,021	\$ 41,028	\$ 40,867	\$ 40,118	\$ 41,500	\$ 41,503	\$ 42,751	\$ 43,041
Pledged facilities development admission (FDA) tax revenues	10,924	8,696	9,368	7,327	8,434	7,906	9,352	10,016	10,110	9,765
Payments in lieu of FDA taxes <sup>1</sup>	-	-	2,700	2,700	2,700	2,700	2,700	2,700	2,700	2,700
Other revenues <sup>2</sup>	377	302	329	194	-	-	-	-	-	-
<b>Total pledged revenues</b>	<b>\$ 51,881</b>	<b>\$ 53,186</b>	<b>\$ 55,418</b>	<b>\$ 51,249</b>	<b>\$ 52,001</b>	<b>\$ 50,724</b>	<b>\$ 53,552</b>	<b>\$ 54,219</b>	<b>\$ 55,561</b>	<b>\$ 55,506</b>
Debt service	\$ 6,033	\$ 6,030	\$ 6,027	\$ 6,032	\$ 6,036	\$ 3,058	\$ 3,054	\$ 3,055	\$ 3,054	\$ 3,056
Coverage	8.60	8.82	9.19	8.50	8.62	16.59	17.54	17.75	18.19	18.16
Required coverage	1.25	1.25	1.25	1.25	1.25	1.25	1.25	1.25	1.25	1.25

<sup>1</sup> Payments in Lieu of FDA taxes represents an agreement made by the City and County of Denver and the Denver Broncos in exchange for early release of the Mile High Stadium lease. The payment is to be made through 2008 in lieu of taxes the Mile High Stadium would have generated to pay existing debt.

<sup>2</sup> Interest earnings on OPT and FDA tax revenues were pledged towards payment of the bonds until the issuance of the 2003 bonds.

**Note:** The excise bonds were issued to fund improvements to City-owned venues, secured by the FDA tax, which is 10% of the admission price to events at City-owned venues, and the OPT, which \$9.75 per month per employee working in Denver.

### Denver International Airport Fund Pledged-Revenue Coverage

Last Ten Fiscal Years (dollars in thousands)

	1999	2000	2001	2002	2003	2004	2005	2006 <sup>1</sup>	2007	2008
Gross Revenues	\$ 522,098	\$ 530,694	\$ 526,631	\$ 499,435	\$ 527,567	\$ 543,044	\$ 567,853	\$ 592,110	\$ 616,106	\$ 635,607
Operation and maintenance expenses	186,596	192,384	211,272	216,791	201,573	220,254	231,733	262,559	282,746	305,382
<b>Net revenues</b>	<b>335,502</b>	<b>338,310</b>	<b>315,359</b>	<b>282,644</b>	<b>325,994</b>	<b>322,790</b>	<b>336,120</b>	<b>329,551</b>	<b>333,360</b>	<b>330,225</b>
Other available funds	67,247	55,620	54,558	46,751	50,807	54,849	55,173	50,791	53,251	53,575
<b>Total amount available for debt service</b>	<b>\$ 402,749</b>	<b>\$ 393,930</b>	<b>\$ 369,917</b>	<b>\$ 329,395</b>	<b>\$ 376,801</b>	<b>\$ 377,639</b>	<b>\$ 391,293</b>	<b>\$ 380,342</b>	<b>\$ 386,611</b>	<b>\$ 383,800</b>
Debt service requirements for the senior bonds	\$ 269,370	\$ 243,423	\$ 226,504	\$ 202,797	\$ 204,897	\$ 221,453	\$ 223,331	\$ 205,935	\$ 229,923	\$ 250,580
Debt service coverage	1.50	1.62	1.63	1.62	1.84	1.71	1.75	1.85	1.68	1.53
Required coverage	1.25	1.25	1.25	1.25	1.25	1.25	1.25	1.25	1.25	1.25

<sup>1</sup> Per restated financial statements.

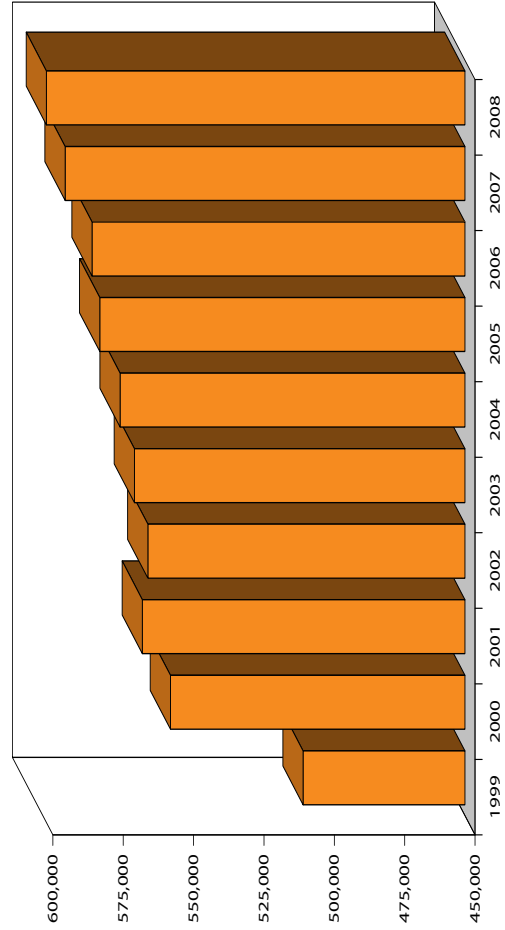
**Source:** Official Bond Statements  
Denver Treasury

**Demographic and Economic Statistics**

Last Ten Calendar Years

	1999	2000	2001	2002	2003	2004	2005	2006	2007	2008
Population	507,500	554,636	564,606	562,657	567,431	572,526	579,744	582,474	592,052	598,707
Personal income (expressed in millions)	\$ 19,247	\$ 21,746	\$ 23,535	\$ 23,729	\$ 24,239	\$ 25,551	\$ 26,622	\$ 28,902	\$ 30,949	n/a
Per capita personal income	\$ 37,925	\$ 39,208	\$ 41,684	\$ 42,173	\$ 42,717	\$ 44,629	\$ 45,920	\$ 50,193	\$ 53,908	n/a
School enrollment	69,776	70,956	72,437	72,617	72,489	72,901	73,018	73,399	73,873	75,269
Unemployment rate	3.10%	3.00%	3.50%	5.90%	6.00%	5.60%	5.00%	4.30%	3.90%	6.10%

City and County of Denver Population



Source: Colorado Department of Labor  
 Denver Public Schools  
 U.S. Department of Commerce

## Principal Employers

Current Year and Eight Years Ago

	2008				2000			
	Employees	Rank	Percentage of Total City Employment		Employees	Rank	Percentage of Total City Employment	
City and County of Denver	10,598	1	2.9%		11,418	1	3.0%	
U. S. D. A. National Finance Center	9,942	2	2.7%		5,782	6	1.5%	
Denver Public School District #1	9,672	3	2.6%		9,523	2	2.5%	
State of Colorado Central Payroll	9,082	4	2.5%		9,061	4	2.3%	
United Airlines, Inc.	5,473	5	1.5%		9,136	3	2.4%	
University of Colorado	5,087	6	1.4%		6,495	5	1.7%	
Denver Health and Hospital Authority	4,305	7	1.2%		-	-	-	
Qwest Corporation	4,050	8	1.1%		4,117	8	1.1%	
U. S. Postal Service	3,750	9	1.0%		4,870	7	1.3%	
Frontier Airlines	3,433	10	0.9%		-	-	-	
<b>Total</b>	<b>65,392</b>		<b>17.8%</b>		<b>60,402</b>		<b>15.8%</b>	

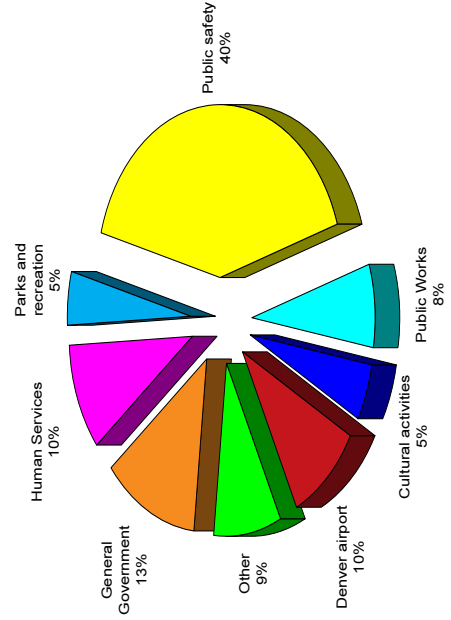
Source: Based on 2008 and 2000 Occupational Privilege Tax Remitters.

**Full-Time Equivalent City Government Employees by Function**

Last Ten Fiscal Years (dollars in thousands)

	1999	2000	2001	2002	2003	2004	2005	2006	2007	2008
General Government	1,199	1,176	1,245	1,242	1,132	1,174	1,216	1,319	1,309	1,329
Public safety	4,084	4,152	4,221	4,082	4,057	4,070	4,128	3,452	4,303	4,327
Public Works	786	789	858	851	801	810	779	778	804	822
Human Services	1,063	1,045	1,121	1,093	1,017	887	897	990	1,060	1,050
Health	119	120	126	119	121	122	126	115	120	126
Parks and recreation	579	593	610	634	594	576	547	544	548	542
Cultural activities	612	567	604	585	546	539	552	545	575	563
Community development	253	262	273	268	255	235	229	229	225	215
Economic opportunity	74	80	105	107	126	134	165	151	226	249
Wastewater management	245	241	250	259	262	261	251	247	255	271
Denver airport system	839	845	872	877	896	910	924	948	990	1,030
Environmental services	21	19	17	21	21	19	20	20	26	26
Golf course	46	48	43	42	43	41	44	40	44	48
<b>Total</b>	<b>9,920</b>	<b>9,937</b>	<b>10,345</b>	<b>10,180</b>	<b>9,871</b>	<b>9,778</b>	<b>9,878</b>	<b>9,378</b>	<b>10,485</b>	<b>10,598</b>

**2008 Full-Time City Employees by Function**



Source: Denver Controller's Office

## Operating Indicators by Function

Last Four Fiscal Years

	2008	2007	2006	2005
<b>Police</b>				
Physical arrests	70,883	75,312	73,668	67,095
Traffic violations	132,659	119,336	117,855	111,307
<b>Fire</b>				
Emergency responses	84,953	91,838	80,418	83,165
Fires extinguished	1,043	690	530	596
Inspections	31,819	23,946	23,134	22,370
<b>Sheriff</b>				
Average daily population	2,334	2,412	2,475	2,337
Number of jails	2	2	2	2
<b>Public works</b>				
Parking tickets issued	618,556	585,290	578,547	577,478
Recyclables collected (tons)	28,067	26,550	21,760	17,673
Refuse collected (tons)	219,675	231,956	234,059	248,596
<b>Other public works</b>				
Alleys paved (square yards)	170,336	74,887	117,611	288,268
Potholes repaired (tons of asphalt)	4,346	4,273	3,943	2,855
Street resurfacing (square yards)	1,887,206	549,260	624,609	754,619
<b>Human services</b>				
Family Medicaid Application for Denver clients	14,513	13,747	13,247	11,783
New child welfare case involvements	2,656	2,501	2,169	1,995
<b>Community development</b>				
Permits issued	45,999	52,184	52,958	60,568
<b>Economic opportunity</b>				
Low income affordable housing units created	45	30	261	652
Percent of job seekers entering employment	66.74%	61.84%	59.70%	59.60%
<b>Parks and recreation</b>				
Admissions	556,601	614,390	629,270	918,487
Memberships	21,659	18,856 <sup>1</sup>	33,513 <sup>1</sup>	33,370
<b>Library</b>				
Total volumes borrowed	9,776,905	9,517,573	9,244,353	8,428,033
Volumes in collection	2,398,677	2,436,793	2,455,965	2,483,487
<b>Wastewater</b>				
Average daily sewage treatment (thousands of gallons)	50,210	59,945	70,226	65,537
<b>Denver airport system</b>				
Passenger air traffic	51,200,000	49,800,000	47,000,000	43,388,000
<b>Excise and Licenses</b>				
Number of business license transactions	17,895	18,355	15,311	15,902

<sup>1</sup> Department changed the way they are counting memberships.

**Source:** Denver Department of Aviation  
Denver Department of Community Planning  
and Development  
Denver Department of Excise and Licenses

Denver Department of Finance  
Denver Department of Human Services  
Denver Department of Parks and Recreation  
Denver Department of Public Works

Denver Department of Safety  
Denver Office of Economic Development  
Denver Public Library

## Capital Asset Statistics

Last Four Fiscal Years

	2008	2007	2006	2005
<b>Fire</b>				
Number of engines/trucks	39/23	39/23	39/23	39/23
Number of stations	33	33	33	33
<b>Police</b>				
Number of marked/unmarked vehicles	313/101	313/101	314/78	307/83
Number of stations	6	6	6	6
<b>Public works</b>				
Bridges (major/minor)	290/179	288/177	287/175	283/175
Alleys				
paved	4,573	4,340	4,216	-
unpaved	563	791	915	923
Streets (centerline miles)	2,005	1,949	1,868	1,798
Traffic signals	1,259	1,255	1,249	1,251
<b>Parks and recreation</b>				
Acreage	19,500	19,100	19,000	19,000
Golf courses	8	8	7	7
Mountain acreage	14,000	14,000	14,000	14,000
Number of parks (includes mountain parks)	393	399	397	368
Parkways (miles)	100	100	100	100
Athletic fields/lighted	324/28	322/28	329/27	329/27
Recreation centers	29	29	29	29
Swimming pools	28	28	28	29
Tennis courts/lighted	129/39	140/67	140/67	140/67
<b>Cultural activities</b>				
Concert venues	7	7	7	7
Public libraries	23	23	23	23
<b>Wastewater</b>				
Sanitary sewers (miles)	1,887	1,875	1,872	1,867
Storm sewers (miles)	1,017	985	966	954
Treatment capacity (millions of gallons)	18,888	18,888	18,888	18,888
<b>Denver airport system</b>				
Acreage	33,800	33,800	33,800	33,800
Number of runways	6	6	6	6
<b>Seating Capacities</b>				
Boettcher Concert Hall	2,679	2,679	2,679	2,634
Colorado Convention Center	20,000	20,000	20,000	20,000
Denver Auditorium Theatre	2,245	2,245	2,245	2,065
Denver Coliseum	11,500	11,500	11,500	10,500
Ellie Caulkins Opera House	2,225	2,225	2,225	2,247
Red Rocks Amphitheater	9,450	9,450	9,450	9,450
Temple Hoyne Buell Theatre	2,844	2,844	2,844	2,882

**Source:** Denver Department of Aviation  
 Denver Department of Finance  
 Denver Department of General Services  
 Denver Department of Parks and Recreation

Denver Department of Public Works  
 Denver Department of Safety  
 Denver Public Library



This page left blank intentionally.