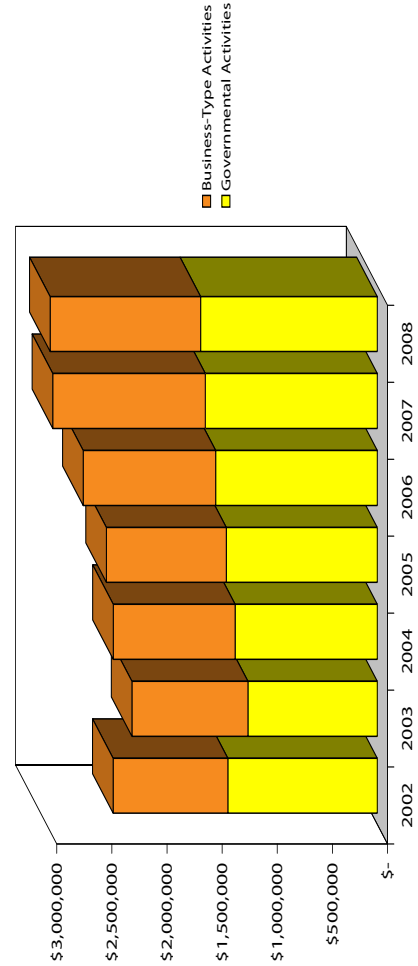


Net Assets by Component

Last Seven Fiscal Years* (dollars in thousands - accrual basis of accounting)

	2002	2003	2004	2005	2006	2007	2008
Governmental activities							
Invested in capital assets, net of related debt	\$ 644,804	\$ 744,167	\$ 869,239	\$ 958,776	\$ 922,261	\$ 1,170,496	\$ 1,238,768
Restricted	82,085	85,203	173,850	212,958	168,361	274,159	340,270
Unrestricted	627,471	343,468	245,817	197,074	374,913	115,047	22,243
Total governmental activities net assets	\$ 1,354,360	\$ 1,172,838	\$ 1,288,906	\$ 1,368,808	\$ 1,465,535	\$ 1,559,702	\$ 1,601,281
Business-type activities							
Invested in capital assets, net of related debt	\$ 169,337	\$ 92,613	\$ 149,591	\$ 84,598	\$ 171,814	\$ 317,488	\$ 262,385
Restricted	379,620	459,196	496,591	572,175	546,394	678,687	681,263
Unrestricted	491,327	499,679	459,387	431,008	483,427	387,282	421,159
Total business-type activities net assets	\$ 1,040,284	\$ 1,051,488	\$ 1,105,569	\$ 1,087,781	\$ 1,201,635	\$ 1,383,457	\$ 1,364,807
Primary government							
Invested in capital assets, net of related debt	\$ 814,141	\$ 836,780	\$ 1,018,830	\$ 1,043,374	\$ 1,094,075	\$ 1,487,984	\$ 1,501,153
Restricted	461,705	544,399	670,441	785,133	714,755	952,846	1,021,533
Unrestricted	1,118,798	843,147	705,204	628,082	858,340	502,329	443,402
Total primary government net assets	\$ 2,394,644	\$ 2,224,326	\$ 2,394,475	\$ 2,456,589	\$ 2,667,170	\$ 2,943,159	\$ 2,966,088

Primary Government Net Assets



*The requirement for statistical data is ten years; only seven years are available at this time.

Changes in Net Assets

Last Seven Fiscal Years* (dollars in thousands - accrual basis of accounting)

	2002	2003	2004	2005	2006	2007	2008
Expenses							
Governmental activities:							
General government	\$ 272,095	\$ 185,756	\$ 187,616	\$ 210,158	\$ 214,976	\$ 262,209	\$ 257,780
Public safety	371,437	363,706	365,856	428,094	435,094	475,728	536,382
Public works	129,251	99,233	92,968	104,375	103,687	79,496	134,698
Human services	118,171	107,614	100,488	98,766	112,754	132,535	139,895
Health	49,559	194,221	46,132	50,222	47,776	45,345	52,332
Parks and recreation	73,299	63,166	61,025	58,866	64,003	63,778	105,232
Cultural activities	87,960	82,313	73,912	66,188	86,490	89,967	62,499
Community development	45,078	67,185	38,013	36,864	31,964	47,098	39,945
Economic opportunity	24,357	22,803	19,417	18,723	20,362	26,280	31,647
Interest on long-term debt	31,857	44,843	54,572	52,498	55,772	54,592	76,073
Total governmental activities	1,203,064	1,230,840	1,039,999	1,124,754	1,172,878	1,277,028	1,436,483
Business-type activities:							
Wastewater management	62,399	65,473	70,260	57,829	66,488	76,298	75,122
Denver airport system	596,076	588,437	588,126	686,315	617,250	679,022	780,501
Stadium	1,298	-	-	-	-	-	-
Environmental services	5,638	9,480	9,315	11,864	5,076	12,319	6,336
Golf course	7,707	7,462	6,856	7,535	8,279	6,570	8,252
Total business-type activities	673,118	670,852	674,557	763,543	697,093	774,209	870,211
Total primary government expenses	\$ 1,876,182	\$ 1,901,692	\$ 1,714,556	\$ 1,888,297	\$ 1,869,971	\$ 2,051,237	\$ 2,306,694
Program Revenues							
Governmental activities:							
Charges for services:							
General government	\$ 42,754	\$ 47,395	\$ 58,075	\$ 66,067	\$ 71,106	\$ 51,541	\$ 76,106
Public safety	51,556	52,897	52,738	56,666	62,015	64,802	67,396
Public works	38,449	39,010	38,094	35,163	41,541	39,439	50,812
Community development	17,414	18,413	17,660	19,246	20,357	23,202	19,288
Other activities	40,800	27,546	25,177	25,992	36,088	38,044	47,862
Operating grants and contributions:							
General government	16,447	16,116	15,862	14,731	18,210	18,578	19,356
Public safety	21,846	18,547	24,311	31,990	25,487	29,266	69,663
Public works	24,285	21,444	22,023	20,833	29,432	32,333	29,902
Human services	83,280	71,070	64,459	63,135	76,593	82,879	82,004
Community development	55,058	35,518	36,991	18,138	15,859	26,151	19,282
Other activities	23,835	24,826	21,122	18,430	22,429	22,373	27,653
Capital grants and contributions:							
Public works	7,619	5,597	12,485	37,517	42,078	9,207	8,822
Other activities	7,549	8,216	25,303	14,008	15,828	16,809	7,997
Total governmental activities program revenues	430,892	386,595	414,300	421,916	477,023	454,624	526,143

continued

Changes in Net Assets - continued

Last Seven Fiscal Years* (dollars in thousands - accrual basis of accounting)

	2002	2003	2004	2005	2006	2007	2008
Business-type activities:							
Charges for services:							
Wastewater enterprises	64,113	65,827	67,091	70,220	73,684	75,750	76,590
Denver airport system	435,523	438,345	477,665	494,491	500,810	530,151	540,760
Other activities	13,668	11,923	13,290	14,512	14,609	16,773	15,936
Operating grants and contributions:							
Denver airport system	67,304	63,674	62,304	84,240	94,076	97,515	106,173
Capital grants and contributions:							
Wastewater enterprises	7,357	15,205	13,509	10,727	7,202	9,906	7,690
Denver airport system	91,152	40,542	62,205	31,547	29,188	2,426	14,392
Total business-type activities program revenues	679,117	635,516	696,064	705,737	719,569	732,521	761,541
Total primary government program revenues	\$ 1,110,009	\$ 1,022,111	\$ 1,110,364	\$ 1,127,653	\$ 1,196,592	\$ 1,187,145	\$ 1,287,684
General Revenues and Other Changes in Net Assets							
Governmental activities:							
Taxes:							
Property	\$ 139,112	\$ 148,213	\$ 179,497	\$ 212,778	\$ 217,119	\$ 227,188	\$ 274,809
Sales and use	394,160	385,361	381,891	412,288	420,693	455,436	468,137
Other	114,262	117,304	117,162	110,918	121,539	151,387	136,211
Investment and interest income	30,695	12,473	14,449	16,612	26,287	39,990	34,340
Other revenue	27,589	28,888	48,428	30,026	35,442	40,309	38,157
Special item loss on revised capital lease	-	(27,985)	-	-	-	-	-
Transfers	10,508	756	340	118	(28,498)	2,261	265
Total governmental activities	716,326	665,010	741,767	782,740	792,582	916,571	951,919
Business-type activities:							
Investment and interest income	46,353	27,626	24,982	39,760	62,814	87,885	90,279
Other revenue	8,722	19,670	7,932	376	66	33	6
Transfers	(10,508)	(756)	(340)	(118)	28,498	(2,261)	(265)
Total business-type activities	44,567	46,540	32,574	40,018	91,378	85,657	90,020
Total General Revenues and Other Changes in Net Assets	\$ 760,893	\$ 711,550	\$ 774,341	\$ 822,758	\$ 883,960	\$ 1,002,228	\$ 1,041,939
Changes in Net Assets							
Governmental activities	\$ (55,846)	\$ (179,235)	\$ 116,068	\$ 79,902	\$ 96,727	\$ 94,167	\$ 41,579
Business activities	50,566	11,204	54,081	(17,788)	113,854	43,969	(18,650)
Total primary government	\$ (5,280)	\$ (168,031)	\$ 170,149	\$ 62,114	\$ 210,581	\$ 138,136	\$ 22,929

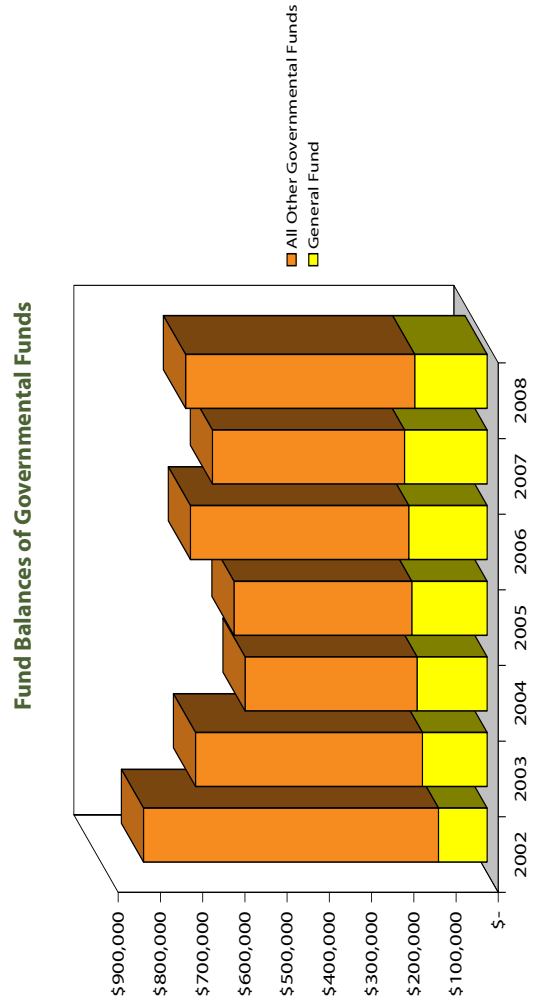
*The requirement for statistical data is ten years; only seven years are available at this time.

This page left blank intentionally.

Fund Balances of Governmental Funds

Last Seven Fiscal Years* (dollars in thousands - modified accrual basis of accounting)

	2002	2003	2004	2005	2006	2007	2008
General Fund							
Reserved	\$ 37,410	\$ 64,450	\$ 58,838	\$ 57,938	\$ 56,842	\$ 40,817	\$ 21,887
Unreserved	77,928	88,857	107,123	120,632	128,814	154,774	149,562
Total General Fund	\$ 115,338	\$ 153,307	\$ 165,961	\$ 178,570	\$ 185,656	\$ 195,591	\$ 171,449
All other governmental funds							
Reserved	\$ 436,583	\$ 395,899	\$ 256,762	\$ 242,792	\$ 278,996	\$ 338,498	\$ 183,353
Unreserved:							
Special revenue funds	64,190	68,058	87,541	64,599	61,626	96,139	97,139
Capital projects funds	194,361	70,016	59,542	110,099	172,918	16,871	258,295
Permanent funds	3,167	3,147	3,359	3,412	3,285	3,387	3,936
Total all other governmental funds	\$ 698,301	\$ 537,120	\$ 407,204	\$ 420,902	\$ 516,825	\$ 454,895	\$ 542,723



*The requirement for statistical data is ten years; only seven years are available at this time.

Changes in Fund Balances of Governmental Funds

Last Seven Fiscal Years* (dollars in thousands - modified accrual basis of accounting)

	2002	2003	2004	2005	2006	2007	2008
Revenues							
Property taxes	\$ 139,112	\$ 148,213	\$ 179,497	\$ 212,778	\$ 217,119	\$ 227,188	\$ 274,809
Sales and use taxes	394,160	385,361	381,891	417,079	420,693	455,436	468,137
Other taxes	113,307	116,308	116,507	123,326	121,539	150,017	136,211
Special assessments	955	996	655	1,467	1,359	1,370	1,394
Licenses and permits	17,358	21,401	23,667	26,173	27,438	29,383	29,364
Intergovernmental revenues	202,427	177,461	192,256	170,760	188,010	211,351	247,386
Charges for services	123,794	128,264	130,888	121,920	160,030	156,564	189,494
Investment and interest income	30,695	12,473	14,449	16,612	26,287	39,990	34,340
Fines and forfeitures	33,338	33,559	33,512	32,844	36,856	37,013	41,473
Contributions	3,130	7,009	18,951	13,698	15,871	8,668	9,022
Other revenue	61,457	52,247	37,520	26,729	38,246	40,376	40,167
Total revenues	1,119,733	1,083,292	1,129,793	1,163,386	1,253,448	1,357,356	1,471,797
Expenditures							
General government	218,320	183,328	166,375	170,543	203,266	236,694	255,008
Public safety	353,887	352,755	364,355	427,634	437,632	470,978	534,984
Public works	79,012	74,641	67,957	69,247	74,339	96,313	125,668
Human services	120,481	105,784	98,234	98,041	112,112	129,451	139,013
Health	47,856	46,138	45,767	46,533	47,739	48,694	52,191
Parks and recreation	45,112	51,707	48,840	50,224	52,297	59,791	100,928
Cultural activities	60,680	52,560	54,226	66,901	81,307	72,974	40,826
Community development	45,796	54,955	44,273	41,062	34,069	53,877	37,808
Economic opportunity	24,369	22,551	19,130	17,702	20,512	26,122	31,486
Principal retirement	44,175	84,540	66,784	88,669	79,837	81,685	70,807
Interest	30,524	38,884	56,037	52,227	56,525	53,387	82,598
Bond issue costs	-	-	297	205	1	421	833
Capital outlay	234,944	497,190	211,182	102,394	88,695	95,821	210,430
Total Expenditures	1,305,156	1,565,033	1,243,457	1,231,382	1,288,331	1,426,208	1,682,580
Deficiency of revenues under expenditures	(185,423)	(481,741)	(113,664)	(67,996)	(34,883)	(68,852)	(210,783)

continued

Changes in Fund Balances of Governmental Funds, continued

Last Seven Fiscal Years* (dollars in thousands - modified accrual basis of accounting)

	2002	2003	2004	2005	2006	2007	2008
Other financing sources (uses)							
Proceeds from sale of capital assets	494	1,033	1,038	5,057	8	5,724	2,526
Developer advance	-	-	92	-	43	-	-
Repayment of developer advance	-	-	-	-	(375)	-	-
GID bonds issued	-	-	2,411	-	-	-	-
Payment to refunding escrow	-	-	(2,287)	(165,529)	-	-	-
Proceeds from certificates of participation	32,530	63,330	-	-	-	-	-
Excise tax revenue bonds issue	-	28,245	-	149,190	-	-	-
Capital leases	-	55,160	3,808	62,342	-	-	20,780
Refunding of capital lease	-	-	-	(55,985)	-	-	-
Capital leases restructured	-	-	-	-	-	-	260,000
Payment to escrow	-	-	-	-	-	-	(250,290)
Commercial paper issued	-	-	-	-	-	-	38,000
Other financing sources	33	-	-	-	-	-	-
General obligation bonds issued	52,500	183,000	-	77,000	125,000	8,861	174,135
Bond premium	-	20,297	-	21,296	10,408	-	17,407
Proceeds from sale of registered coupons	-	-	-	-	-	-	11,610
Insurance recoveries	-	-	-	397	99	11	86
Transfers in	117,338	111,527	81,200	92,325	79,514	85,346	111,590
Transfers out	(113,604)	(124,171)	(89,860)	(91,790)	(76,805)	(83,085)	(111,375)
Total other financing sources (uses)	89,291	338,421	(3,598)	94,303	137,892	16,857	274,469
Net change in fund balances	\$ (96,132)	\$ (143,320)	\$ (117,262)	\$ 26,307	\$ 103,009	\$ (51,995)	\$ 63,686
Debt service as a percentage of noncapital expenditures	6.3%	9.7%	12.2%	12.1%	11.1%	10.7%	10.8%

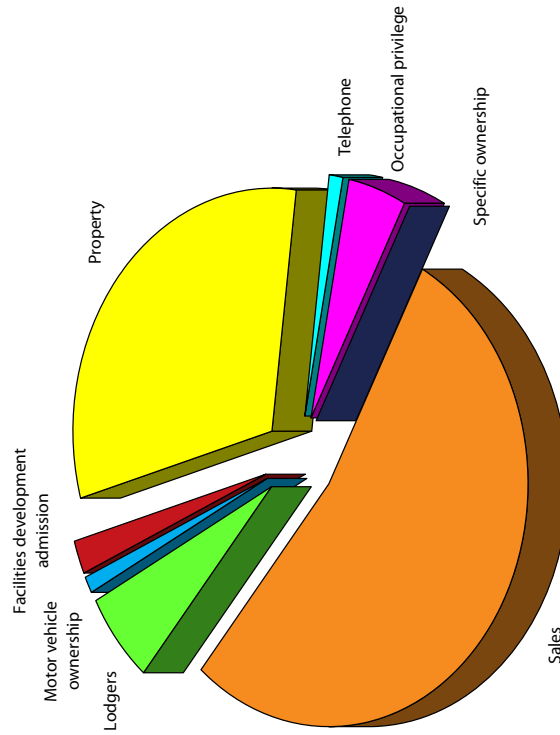
* The requirement for statistical data is ten years; only seven years are available at this time.

Governmental Activities Tax Revenues by Source

Last Seven Fiscal Years* (dollars in thousands - modified accrual basis of accounting)

Taxes	2002	2003	2004	2005	2006	2007	2008
Facilities development admission	\$ 7,729	\$ 8,181	\$ 7,637	\$ 9,174	\$ 9,761	\$ 10,092	\$ 10,016
Lodgers	27,340	27,333	28,036	32,725	43,258	49,651	53,773
Motor vehicle ownership fee	14,894	15,476	16,655	16,815	15,884	16,963	19,514
Occupational privilege	41,026	41,191	40,138	41,500	41,502	42,751	43,040
Property	139,400	148,410	179,826	212,778	217,119	227,188	274,809
Sales	394,160	385,361	381,891	412,288	420,693	455,436	468,137
Specific ownership	57	58	59	62	60	64	54
Taxicab operators	71	31	35	-	-	-	-
Telephone	9,376	9,075	7,422	9,175	11,074	9,918	9,814
Total primary government taxes	\$ 634,053	\$ 635,116	\$ 661,699	\$ 734,517	\$ 759,351	\$ 812,063	\$ 879,157

2008 Tax Revenues by Source



Note: 2006, 2007, and 2008 property taxes include taxes of \$28,725,000, \$28,990,000 and \$30,135,000 for Fire and Police Pension Association. This was previously disclosed in the agency funds.

*The requirement for statistical data is ten years; only seven years are available at this time.

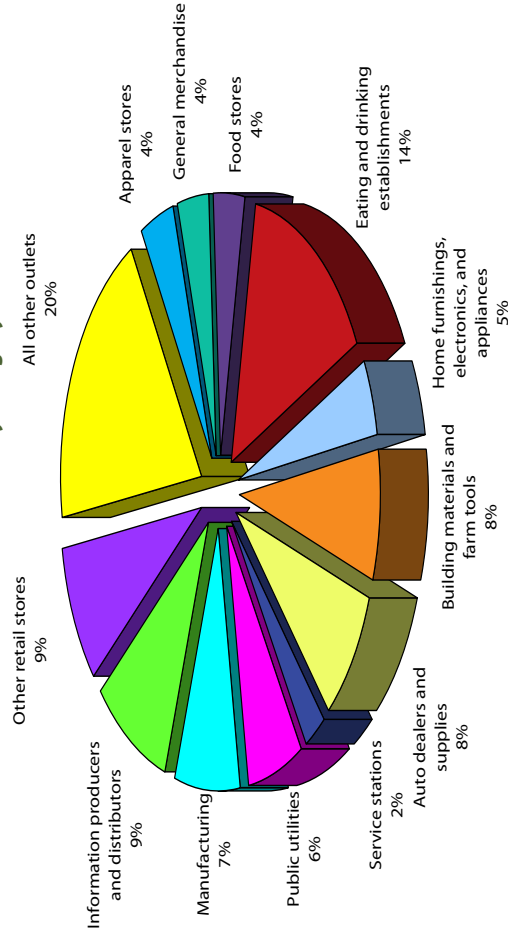
Sales Tax by Category

Last Ten Calendar Years (dollars in thousands)

	1999	2000	2001	2002	2003	2004	2005	2006	2007	2008
Apparel stores	\$ 9,964	\$ 10,375	\$ 10,682	\$ 10,699	\$ 10,676	\$ 14,380	\$ 15,207	\$ 15,179	\$ 16,474	\$ 17,691
General merchandise	17,581	18,500	17,970	17,755	18,077	16,583	16,356	16,892	16,209	16,953
Food stores	9,917	9,641	10,234	9,649	9,441	15,420	15,845	16,729	16,210	17,961
Eating and drinking establishments	56,665	58,424	60,022	61,427	62,948	53,763	56,824	60,252	60,097	67,878
Home furnishings, electronics and appliances	67,335	75,208	76,908	65,422	71,162	17,727	20,255	21,268	21,543	22,461
Building materials and farm tools	36,795	38,984	40,847	45,944	42,225	35,058	39,322	39,353	35,826	37,741
Auto dealers and supplies	68,289	75,824	77,657	70,827	71,332	40,394	38,860	38,093	38,350	39,584
Service stations	-	-	-	-	-	14,597	13,390	13,702	11,942	10,719
Public utilities	-	-	-	-	-	21,928	24,598	25,068	24,503	30,145
Manufacturing	-	-	-	-	-	31,124	33,720	35,808	34,033	34,947
Information producers and distributors	-	-	-	-	-	34,329	37,376	39,768	36,164	41,431
Other retail stores	128,956	176,840	146,777	112,437	99,500	28,409	27,543	25,506	44,383	40,913
All other outlets	-	-	-	-	-	58,179	77,783	73,075	99,702	89,713
Total	\$ 395,502	\$ 463,796	\$ 441,097	\$ 394,160	\$ 385,361	\$ 381,891	\$ 417,079	\$ 420,693	\$ 455,436	\$ 468,137

City direct sales tax rate 3.5% 3.5% 3.5% 3.5% 3.5% 3.5% 3.5% 3.5% 3.5% 3.5%

2008 Sales Tax by Category



Note: Beginning in 2003 data was tracked by NAICS code rather than SIC code and the number of categories was expanded in order to provide more detail when tracking revenues. This change was not done retroactively, so data in 2003 and prior has no corresponding NAICS information for these categories.

Source: Denver Controller's Office