

S. Broadway Modeling Results - 2030

NB/SB Travel Times on Broadway (Louisiana Ave to Center Ave)

AM Peak Hour (Min:Sec)

	No-Action	Widening	Multi-Way	Couplet
NB	4:50	3:06	4:25	2:32
SB	11:52	7:11	6:28	2:30

PM Peak Hour (Min:Sec)

	No-Action	Widening	Multi-Way	Couplet
NB	3:57	2:44	4:01	3:37
SB	10:01	7:02	9:31	3:02

Percent Demand Served for the Peak Hour (Louisiana Ave to Center Ave)

	No-Action	Widening	Multi-Way	Couplet
AM	75%	95%	85%	97%
PM	72%	89%	76%	96%

Peak Hour Volume Served on Broadway Links (NB and SB Traffic)

AM Peak Hour (Vehicles)

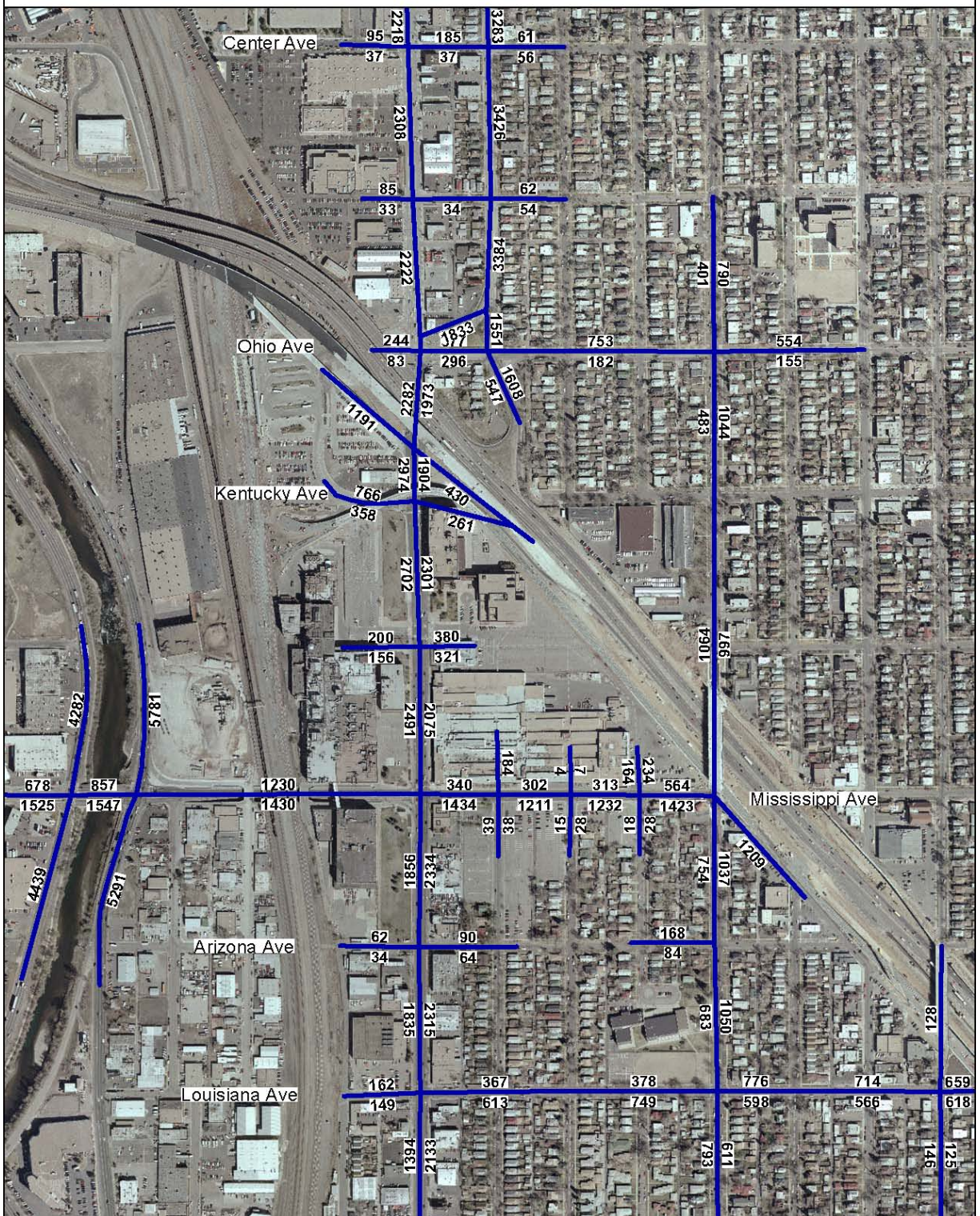
	No-Action	Widening	Multi-Way	Couplet
Center to Exposition	4,178	5,223	4,923	5,419
Kentucky to Tennessee	3,719	4,821	4,151	4,570
Louisiana to Arizona	3,118	3,920	3,392	4,089

PM Peak Hour (Vehicles)

	No-Action	Widening	Multi-Way	Couplet
Center to Exposition	4,559	6,172	4,989	6,745
Kentucky to Tennessee	4,029	5,087	4,221	4,876
Louisiana to Arizona	3,327	4,014	3,495	4,403



2030 AM No-Action Demand Volume





2030 PM No-Action Demand Volume

