



WELCOME

South Broadway NEPA Process Exposition to Louisiana

May 12, 2005



Public Meeting #1 Public Information and Scoping Meeting



Carter=Burgess



Project Description

The City and County of Denver has initiated a study to examine alternatives to improve North-South travel along the South Broadway corridor from Exposition to Louisiana. This study will develop and analyze a range of travel alternatives including automobile, transit, bicycle and pedestrian transportation. Each alternative will be evaluated for travel performance as well as potential social, environmental and economic impacts and recommended mitigation.

The study process is designed according to the National Environmental Policy Act (NEPA) of 1969, which is comprehensive, inclusive and necessary if federal funding will be used for any possible transportation improvements. NEPA processes are designed to be open for public input and review of all analysis.

Need for the Project:

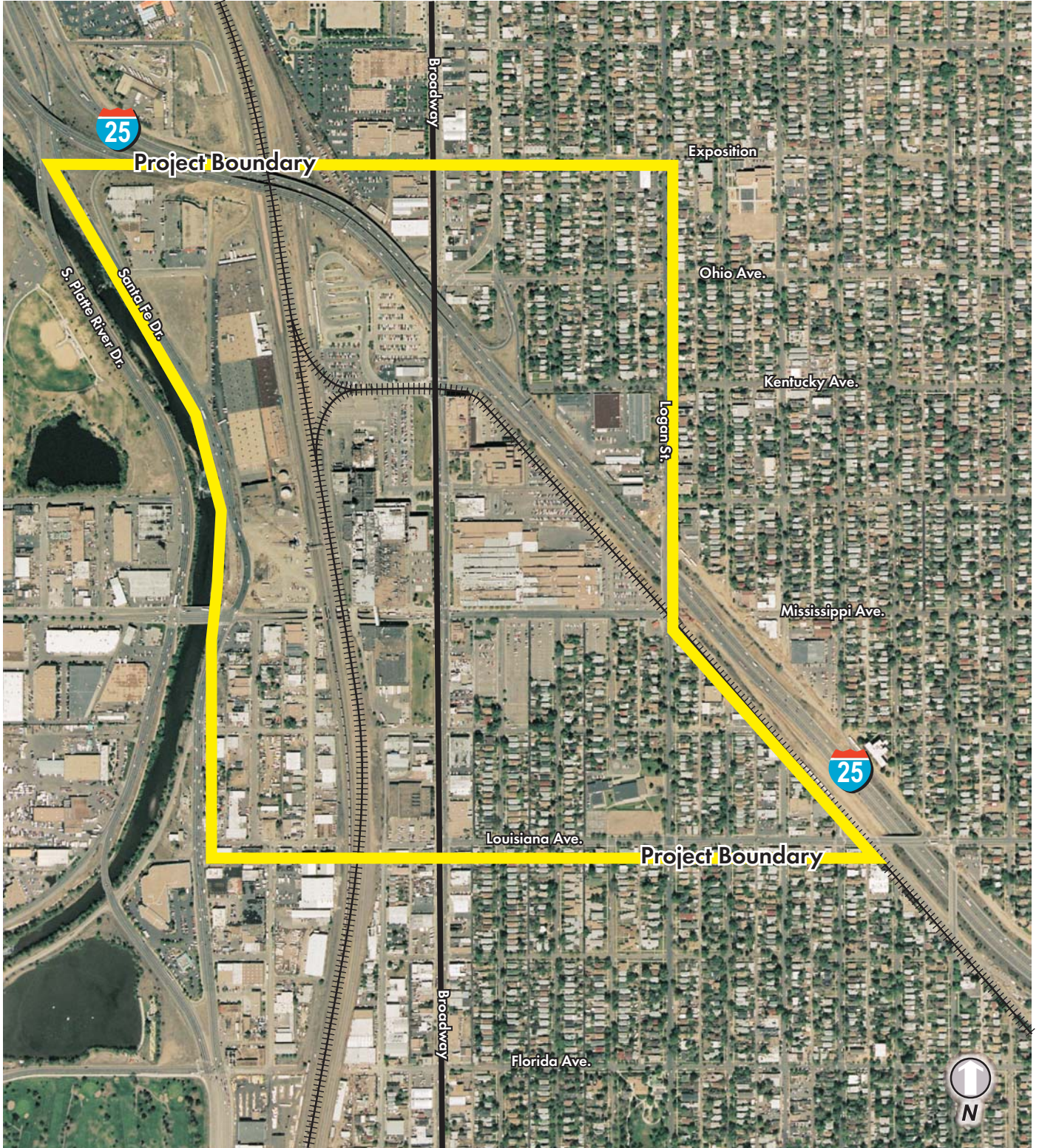
- Proposed Development
- Traffic Projections (2030)

A project purpose and need statement will be developed and refined during the project.





Study Area





Purpose of Tonight's Meeting

- **Introduce the South Broadway NEPA Process:**
 - Purpose
 - Study Area
 - Schedule
 - Public Involvement
- **Identify, or 'scope' neighborhood issues to be considered in the development of criteria for the identification and evaluation of alternatives**

Tonight, we want to hear from you about:

- **Your travel needs**
- **Neighborhood issues you think are most critical**
- **Ideas you would like to see studied to improve North/South Broadway travel**
- **Information you have that can help this project**





What is NEPA?

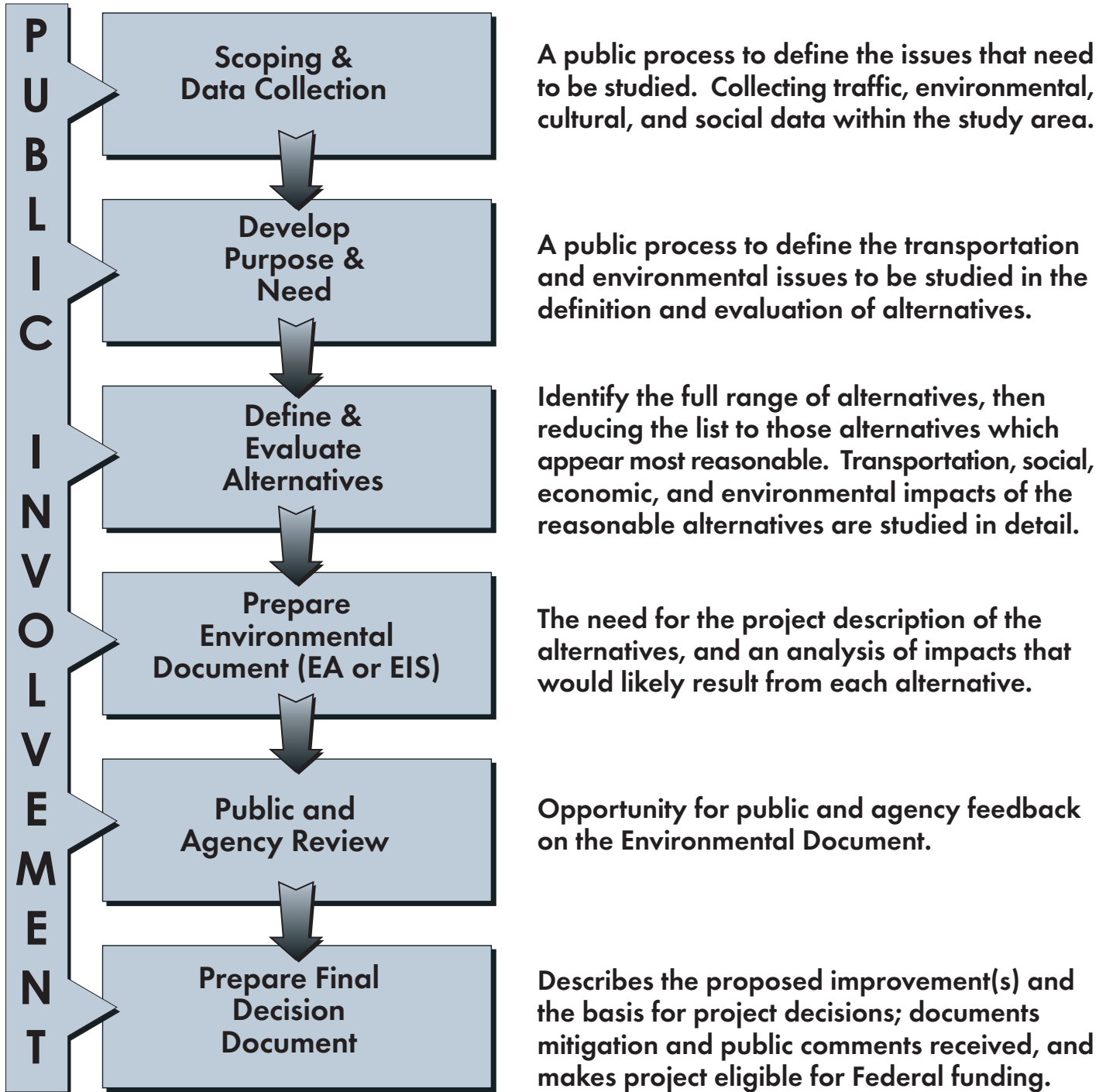
- **National Environmental Policy Act of 1969**
 - Open public involvement
 - Transparent evaluation of alternatives
 - Evaluate potential environmental, social, historic, and economic impacts associated with the reasonable alternatives
 - Complete disclosure of impacts
- **Direct Federal agencies to conduct environmental reviews for proposed actions**
- **Fundamental objectives include interagency cooperation and public participation**
- **Potential project impacts and mitigation measures must be documented**

Not yet determined what type of NEPA documentation for South Broadway NEPA Process (Environmental Assessment or Environmental Impact Statement)





NEPA Process





Resources to be Studied

Social

- Social/Community Effects
- Land Use and Zoning
- Environmental Justice
- Right-of-Way/Relocation
- Pedestrian/Bicycle Facilities
- Parks and Recreation
- Historic and Cultural Resources
- Visual and Aesthetics
- Economics
- Noise and Vibration
- Public Safety and Security

Environmental

- Hazardous Waste
- Water Quality/Resources
- Soils and Geology
- Air Quality
- Wetlands
- Vegetation
- Floodplains
- Paleontological Resources
- Wildlife and Fisheries
- Farmlands
- Threatened and Endangered Species

Constructability

- Cost and Phasing
- Construction Effects
- Energy

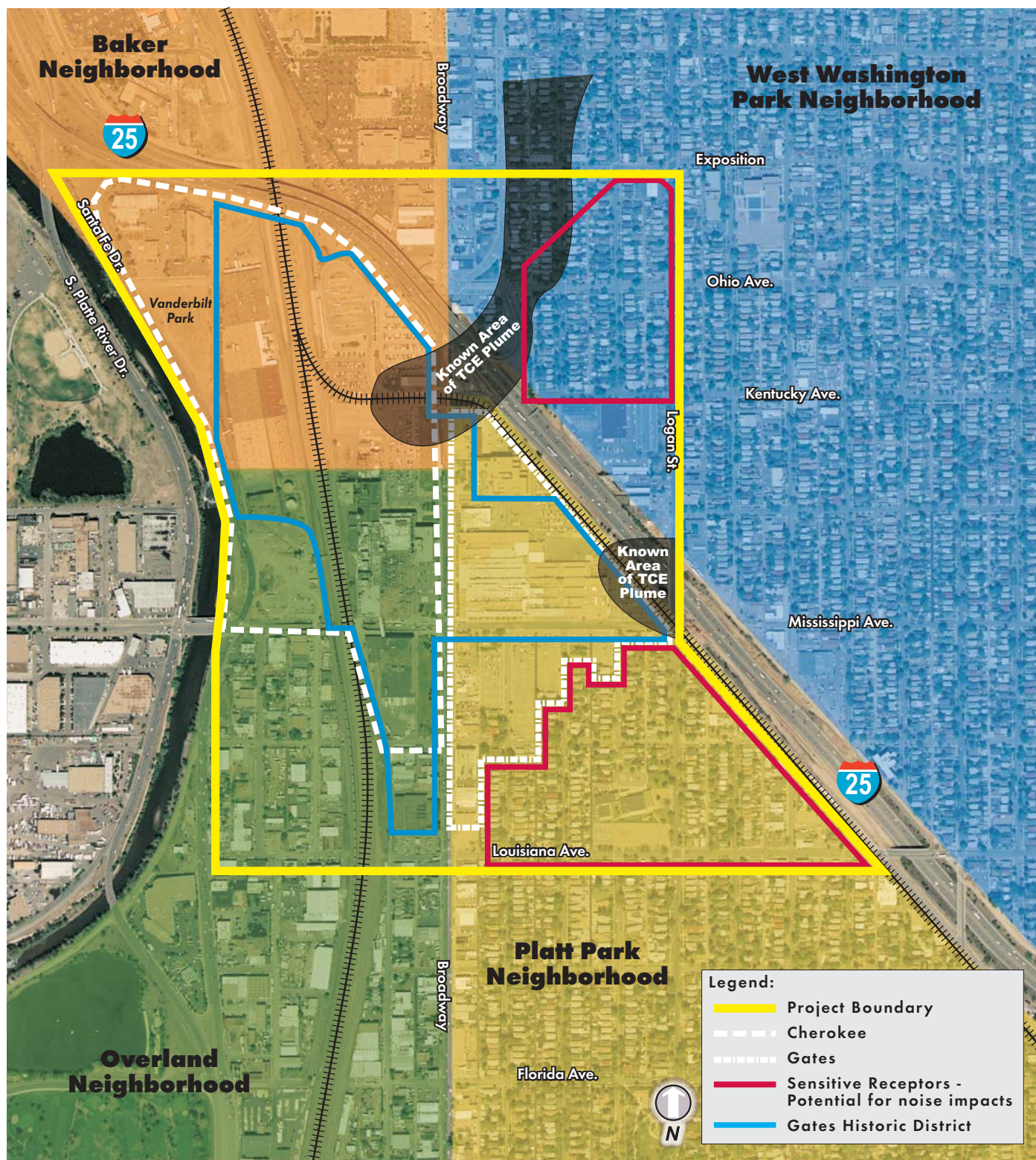
Transportation

Cumulative Effects to Resources

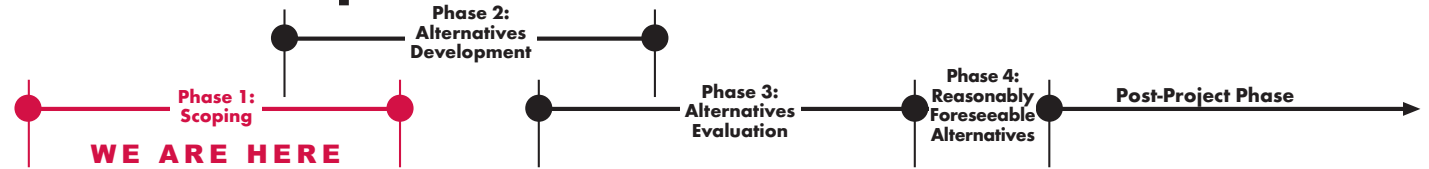




Environmental Issues



Project Schedule



Task/Activity Scoping	May 2005	June 2005	July 2005	August 2005	September 2005	October 2005	November 2005	December 2005	2006
Declaration to Initiate Formal NEPA Process	■								
Neighborhood Organization Outreach		■							
Consensus Committee Meetings		● Interviews	●	●	●	●	●	●	
Policy Committee Meetings		○	○	○	○	○	○	○	
Transportation/Environmental Data Analysis and Summarization		■							
Define Alternatives			■						
Define Screening Criteria			■						
Public Meetings	▲ #1		▲ #2		▲ #3		▲ #4		
Screen Alternatives					■				
Define Reasonably Foreseeable Alternatives							■		
Refine Reasonable Alternative/ Define Mitigation/Costs							■		
Commence Discussions with Developers							■		
Recommend EIS/EA Alternatives								⊗	
Develop/Maintain Administrative Record		■							



KEY
If Necessary - ○



Project Team

KEY

- 1 RESOLVE
- 2 Fehr & Peers
- 3 UrbanTrans Consultants
- 4 Hartwig & Associates
- 5 Hermsen Consultants
- 6 Ray Real Estate Services
- 7 Leland Consulting Group



Jason Longsdorf
City and County of Denver
Project Manager

Carter=Burgess

Gina McAfee, AICP
Project Principal

Carter=Burgess

Larry W. Gibson
Project Manager

Public Involvement and
Consent Building
Mike Hughes¹

Jody Erikson¹
Caelan McGee¹
Troy Halouska

Roadway
Marvinetta Hartwig, PE⁴

Traffic and Circulation Analysis
Brian Welch, AICP²
Paul Brown, PE
Jeremy Klop, AICP²

Design
Marvinetta Hartwig, PE⁴

Cost/Financial Analysis
Carla Perez

Environmental Process
Jeanette Lostracco, AICP

Hazardous Materials
Craig Carter

Environmental Justice
Wendy Wallach, AICP

Historic Properties
Gail Keeley, AICP⁵

Noise/Air Quality
Kirk Webb

Neighborhood Issues
Wendy Wallach, AICP

Cumulative Impacts
Tracey MacDonald

Transportation Planning/Land Use
Bill Sirois

Transit
Zafar Alikhan, AICP

Bicycle/Pedestrian
David Ungemah, AICP³

Land Use/TOD
Bill Sirois
Brian Welch, AICP²

TDM
Stuart Anderson³

Economic Development
Arnie Ray⁶
Anne Ricker⁷





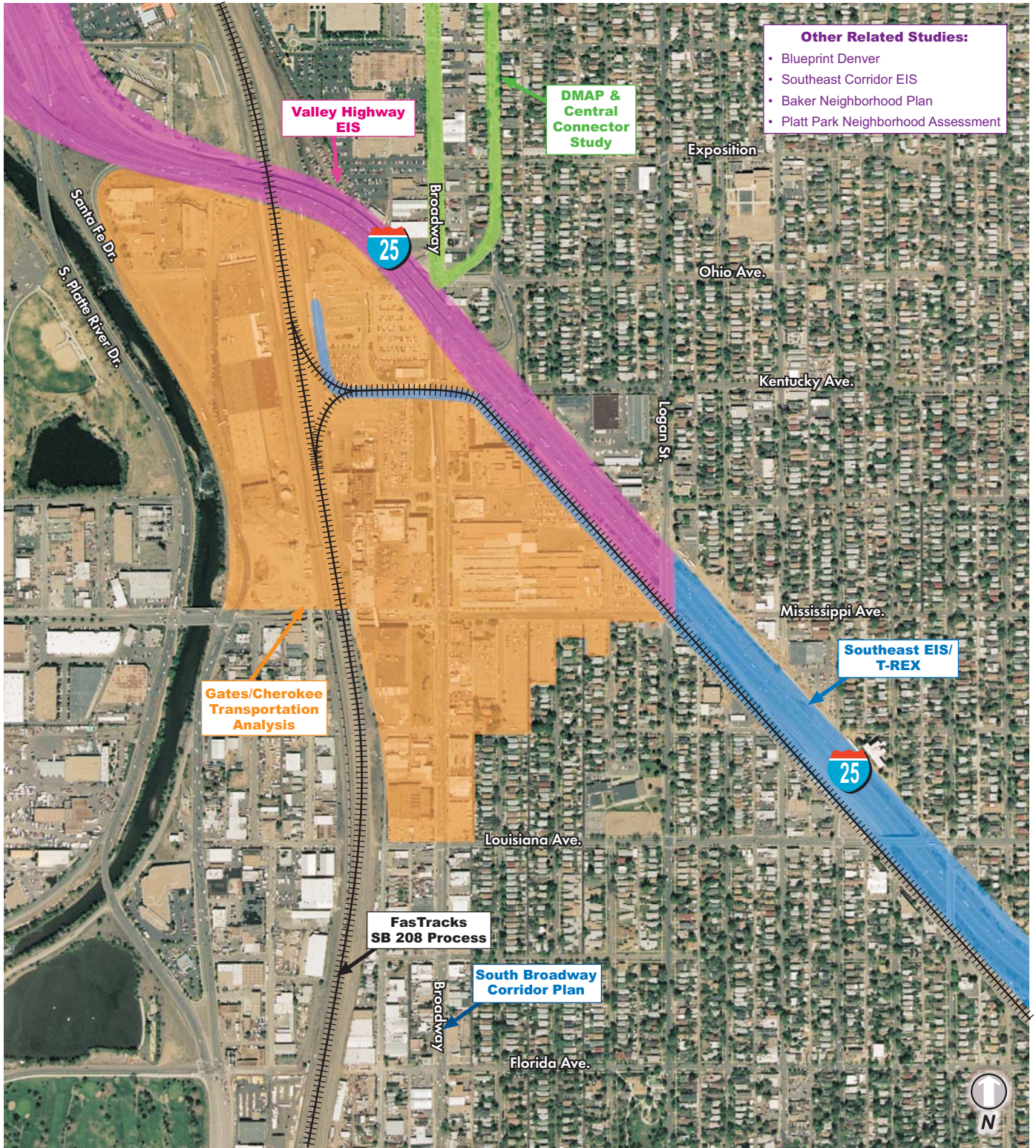
How You Can Participate

- **Public Meetings - At each phase of the NEPA Process:**
 - Scoping: May 2005
 - Alternatives Development: Summer 05
 - Alternatives Evaluation: Fall 05
 - Alternatives Narrowing/Analysis: Winter 05/06
 - Public Hearing during public review of NEPA document
- **Consensus Committee - Develop consensus for alternatives, Committee will include representatives of:**
 - Neighborhood and Business Organizations
 - City and County of Denver
 - Cherokee and Gates Owners
 - Colorado Department of Transportation (CDOT)
 - Regional Transportation District (RTD)
- **Comment Forms - Please fill out a comment form this evening. Take more for others to complete and send to us (address on form)**
- **Website - www.denvergov.org/broadwaynepa/**
- **Contact:**
 - **Larry Gibson**
Carter & Burgess Project Manager
303-223-5837
 - **Jason Longsdorf**
City of Denver, Project Manager
720-865-3162





Previous Studies





Issues Previously Identified

- Increasing traffic volumes
- Provision for all traffic movements
- Through traffic
- Traffic impacts to neighborhoods
- Intersection delays
- Southbound Broadway to Southbound I-25

- Pedestrian friendly access to transit
- Safety - all users
- Bicycle access

- Clean-up of redevelopment sites
- Preservation of historic resources
- Cost and timing of improvements
- Appropriate access to:
 - Neighborhoods
 - Redevelopment sites
 - Businesses
 - Community facilities
 - Transit

- Mode split
- Transit capacity
- Additional transit service
- Travel time through corridor

**What else?
Give us your ideas.....**

