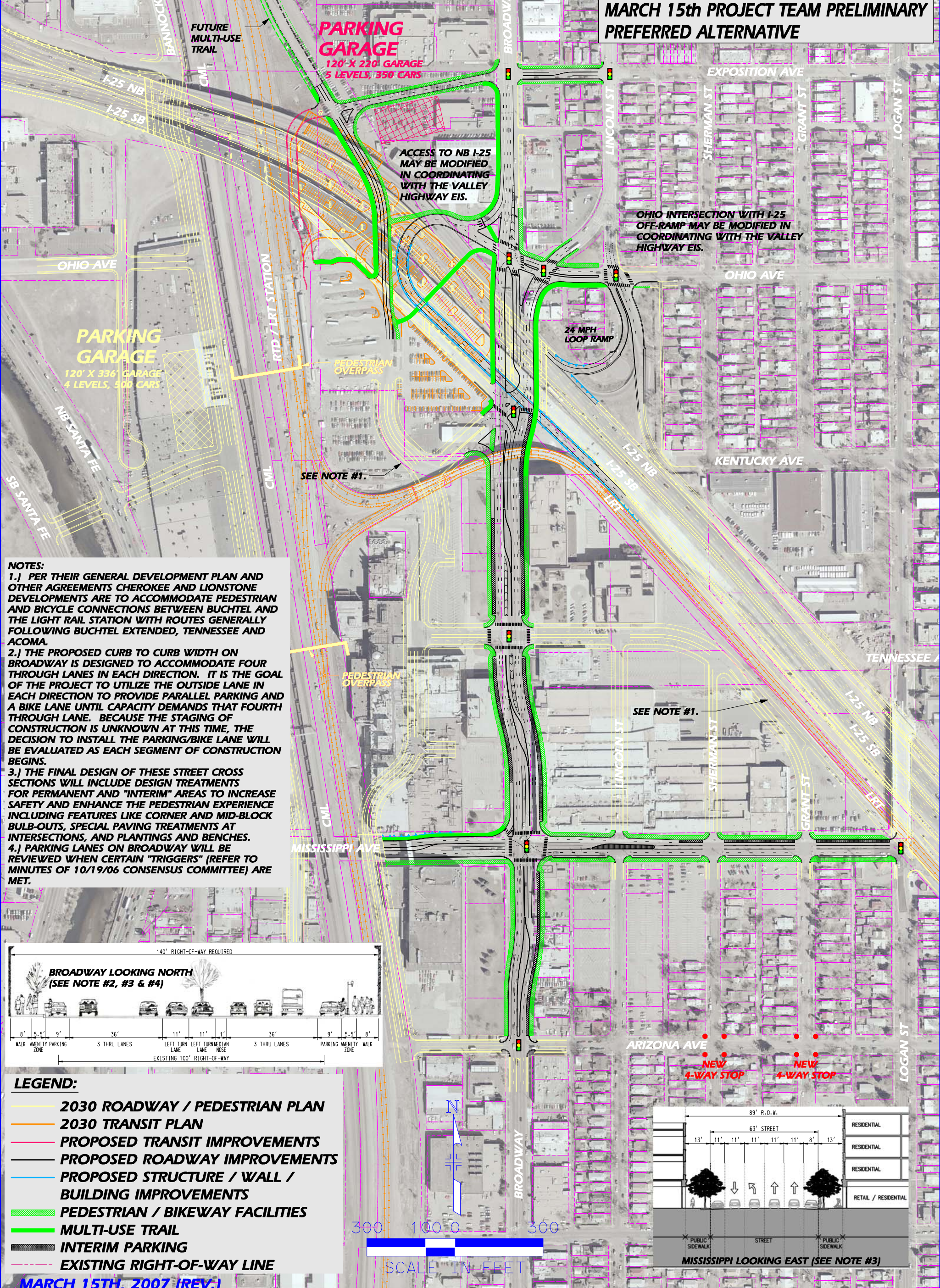


LEVEL 3B - BROADWAY WIDENING

MARCH 15th PROJECT TEAM PRELIMINARY PREFERRED ALTERNATIVE



PARKING GARAGE
120' X 220' GARAGE
5 LEVELS, 350 CARS

PARKING GARAGE
120' X 336' GARAGE
4 LEVELS, 500 CARS

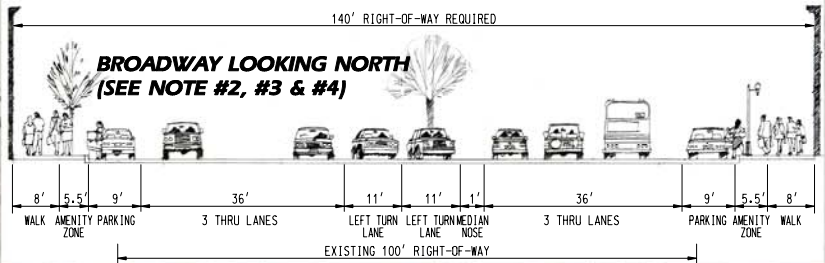
ACCESS TO NB I-25 MAY BE MODIFIED IN COORDINATING WITH THE VALLEY HIGHWAY EIS.

OHIO INTERSECTION WITH I-25 OFF-RAMP MAY BE MODIFIED IN COORDINATING WITH THE VALLEY HIGHWAY EIS.

SEE NOTE #1.

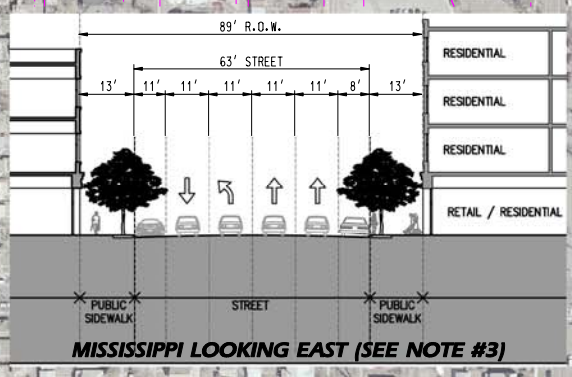
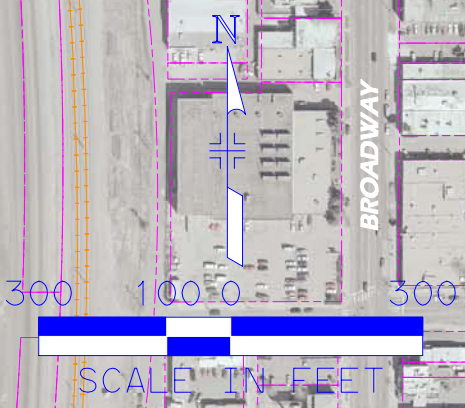
SEE NOTE #1.

- NOTES:**
- 1.) PER THEIR GENERAL DEVELOPMENT PLAN AND OTHER AGREEMENTS CHEROKEE AND LIONSTONE DEVELOPMENTS ARE TO ACCOMMODATE PEDESTRIAN AND BICYCLE CONNECTIONS BETWEEN BUCHTEL AND THE LIGHT RAIL STATION WITH ROUTES GENERALLY FOLLOWING BUCHTEL EXTENDED, TENNESSEE AND ACOMA.
 - 2.) THE PROPOSED CURB TO CURB WIDTH ON BROADWAY IS DESIGNED TO ACCOMMODATE FOUR THROUGH LANES IN EACH DIRECTION. IT IS THE GOAL OF THE PROJECT TO UTILIZE THE OUTSIDE LANE IN EACH DIRECTION TO PROVIDE PARALLEL PARKING AND A BIKE LANE UNTIL CAPACITY DEMANDS THAT FOURTH THROUGH LANE. BECAUSE THE STAGING OF CONSTRUCTION IS UNKNOWN AT THIS TIME, THE DECISION TO INSTALL THE PARKING/BIKE LANE WILL BE EVALUATED AS EACH SEGMENT OF CONSTRUCTION BEGINS.
 - 3.) THE FINAL DESIGN OF THESE STREET CROSS SECTIONS WILL INCLUDE DESIGN TREATMENTS FOR PERMANENT AND "INTERIM" AREAS TO INCREASE SAFETY AND ENHANCE THE PEDESTRIAN EXPERIENCE INCLUDING FEATURES LIKE CORNER AND MID-BLOCK BULB-OUTS, SPECIAL PAVING TREATMENTS AT INTERSECTIONS, AND PLANTINGS AND BENCHES.
 - 4.) PARKING LANES ON BROADWAY WILL BE REVIEWED WHEN CERTAIN "TRIGGERS" (REFER TO MINUTES OF 10/19/06 CONSENSUS COMMITTEE) ARE MET.



- LEGEND:**
- 2030 ROADWAY / PEDESTRIAN PLAN
 - 2030 TRANSIT PLAN
 - PROPOSED TRANSIT IMPROVEMENTS
 - PROPOSED ROADWAY IMPROVEMENTS
 - PROPOSED STRUCTURE / WALL / BUILDING IMPROVEMENTS
 - PEDESTRIAN / BIKEWAY FACILITIES
 - MULTI-USE TRAIL
 - INTERIM PARKING
 - EXISTING RIGHT-OF-WAY LINE

MARCH 15TH, 2007 (REV.)



MISSISSIPPI LOOKING EAST (SEE NOTE #3)