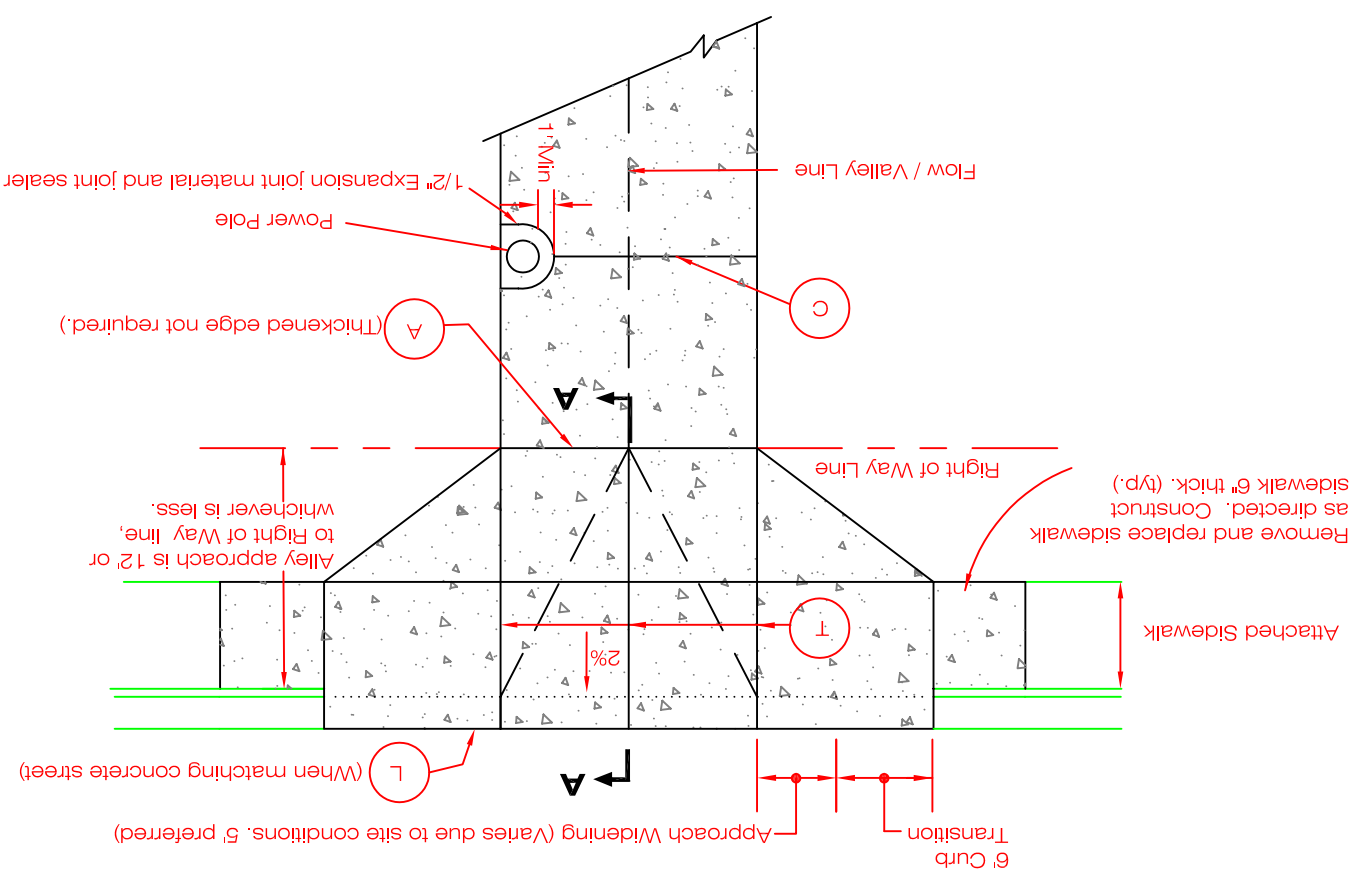


- NOTES:
1. Asphalt Patch may be required. See Detail 12.0.
 2. Any sidewalk sections remaining or replaced must be larger than 4' x 4'.
 3. For (A), (C), (T) and (L) joints, refer to Detail 11.2.
 4. Alley and alley approach paving thickness = 8"
 5. Approach widening may be modified for areas with adjacent curb cuts only with approval of the Engineer.



SECTION A-A APPROACH

