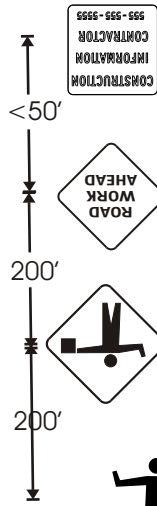
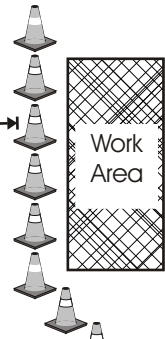


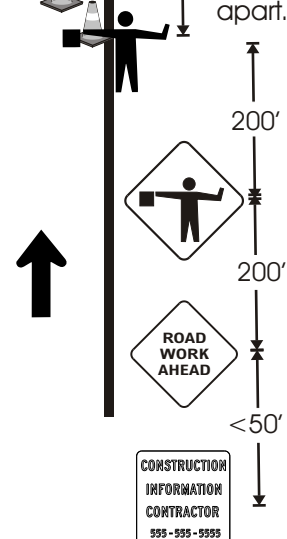
Sign spacing to be approx. 200 feet apart for low speed local streets (<35mph).



A minimum of 10' must be maintained



Taper - 100' Max
Cone spacing approx 25' apart.



Sign spacing to be approx. 200 feet apart for low-speed local streets (<35mph).

* Contractor must resolve all local access and safety issues.

*All barricades, cones, and signs must be in accordance with the latest edition of the Manual on Uniform Traffic Code Devices (MUTCD).

*Flaggers must follow MUTCD guidelines. Flaggers must use and wear safety equipment as required.

**City and County of Denver
Department of Public Works
Transportation Division**

Traffic Control Plan #1

One Lane Road - Residential/Local Streets

Prepared By

JMH

Revised 2/5/01

Drawing Not to Scale