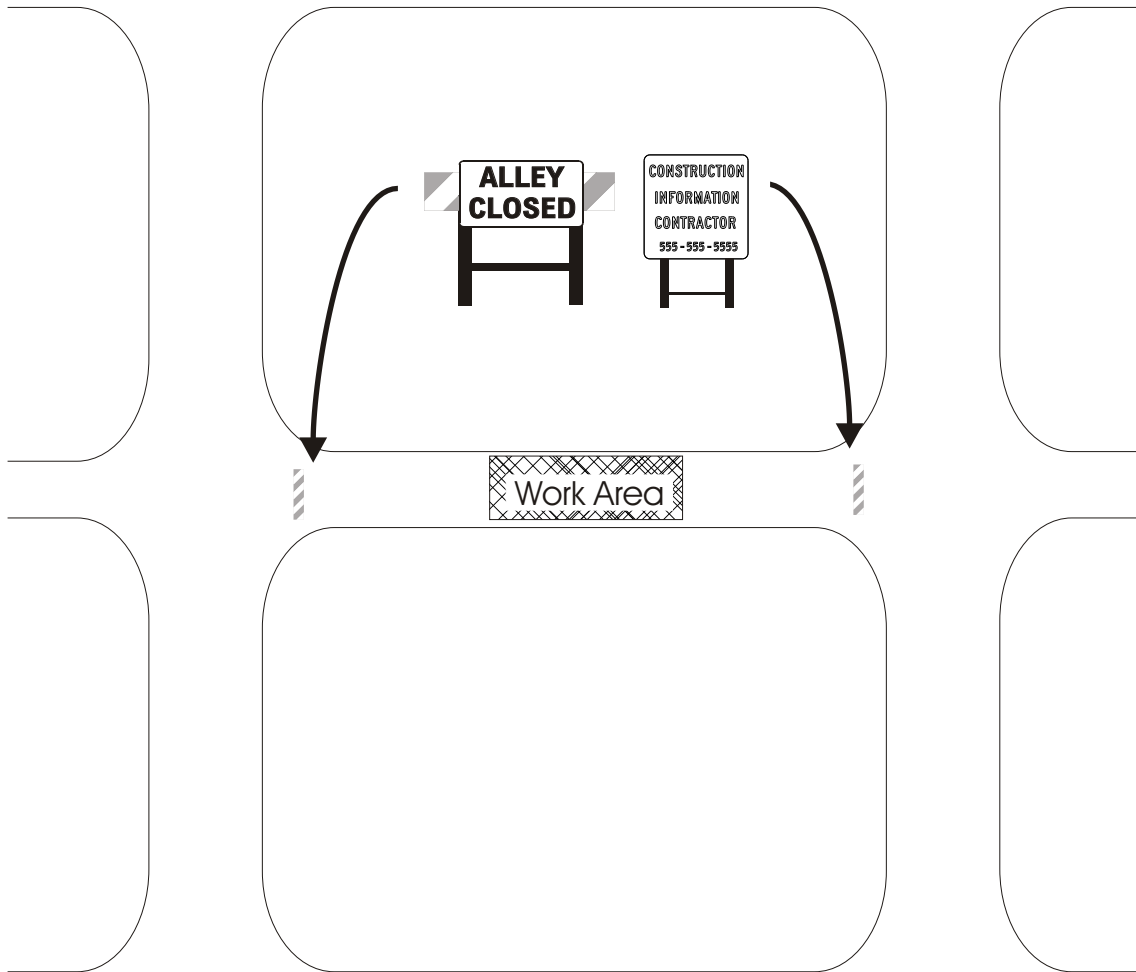


*Contractor must resolve all local access and safety issues.

*Contractor must obtain the approval from all local residents and businesses prior to alley closure.

* All barricades, cones, and signs must be in accordance with the latest edition of the Manual on Uniform Traffic Control Devices.



DRAWING NOT TO SCALE

City and County of Denver Department of Public Works Transportation Division	
Traffic Control Plan # 2	
Alley Closure -Local/Residential Streets	
Prepared By	JMH
	Revised 1/20/01