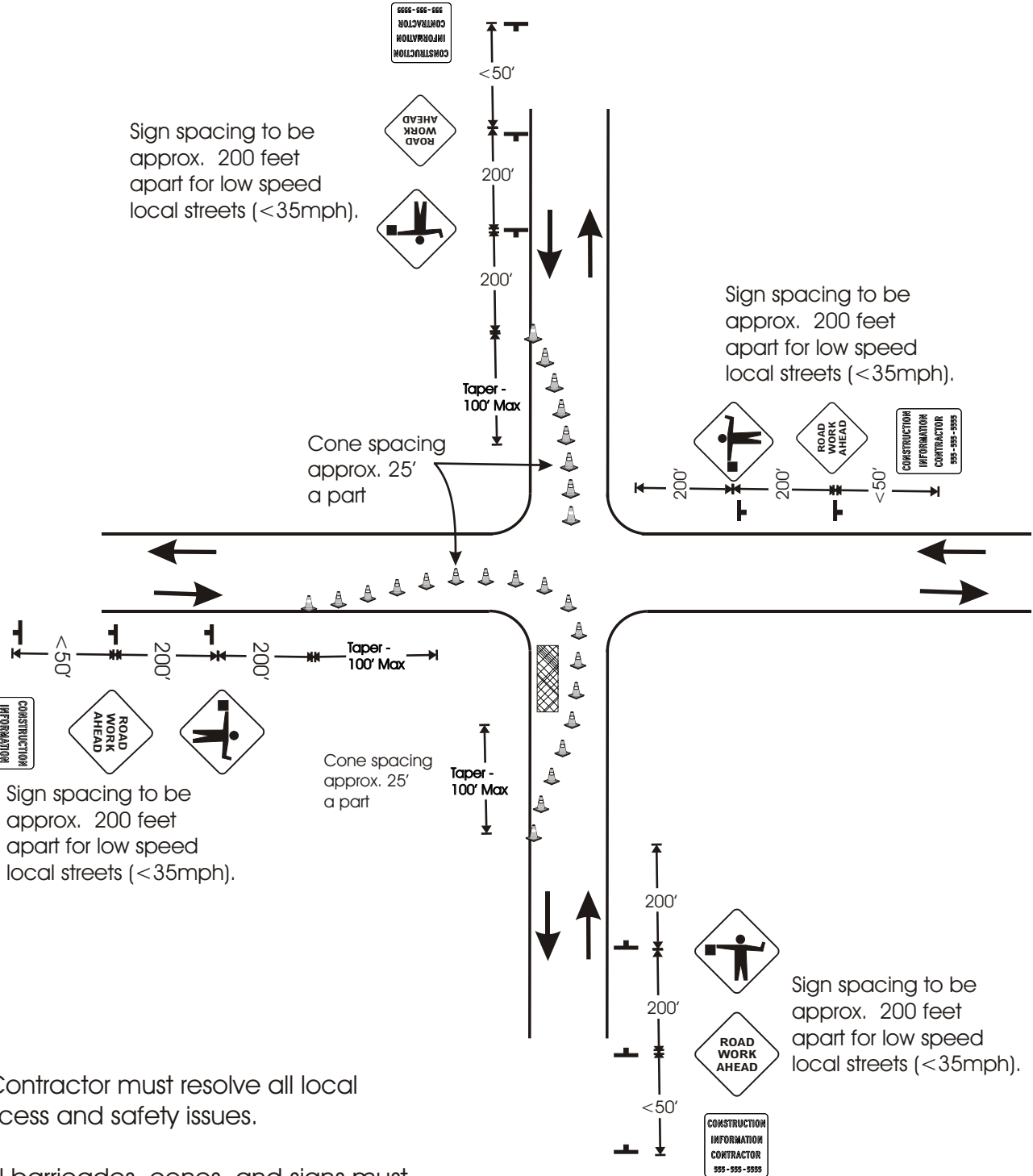


Sign spacing to be approx. 200 feet apart for low speed local streets (<35mph).

Sign spacing to be approx. 200 feet apart for low speed local streets (<35mph).



Sign spacing to be approx. 200 feet apart for low speed local streets (<35mph).

Sign spacing to be approx. 200 feet apart for low speed local streets (<35mph).

* Contractor must resolve all local access and safety issues.

*All barricades, cones, and signs must be in accordance with the Manual on Uniform Traffic Code Devices (MUTCD).

*Flaggers must follow MUTCD Guidelines. Flaggers must use and wear safety equipment as required.

DRAWING NOT TO SCALE

| | |
|---|----------------------|
| City and County of Denver Department of Public Works Transportation Division | |
| Traffic Control Plan #4 | |
| Intersection Lane Closure - Residential/Local St | |
| Prepared By | JMH Revised 02/01/01 |