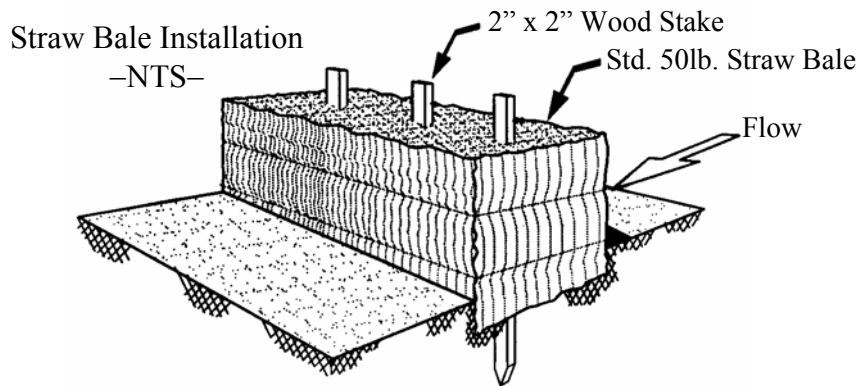
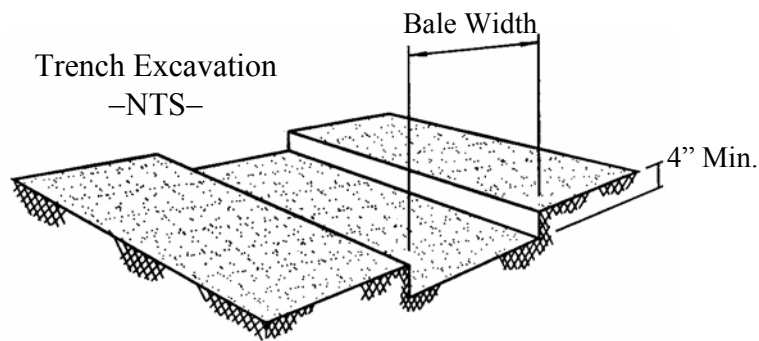


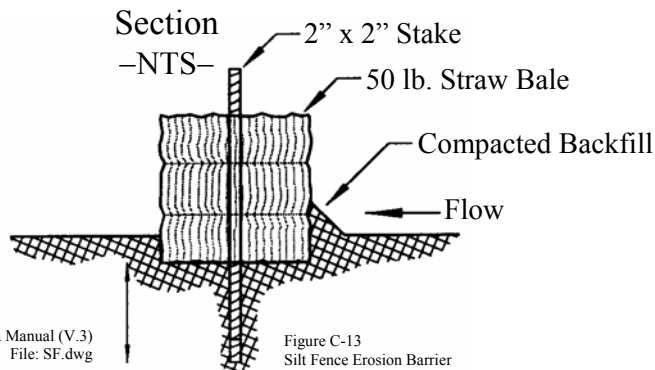
8. Straw Bale Erosion Barrier

Definition: A temporary sediment barrier consisting of a row of entrenched and anchored straw bales.

- Purpose:*
1. To intercept and detain small amounts of sediment from distributed areas of limited extent in order to reduce sediment in runoff from leaving the site.
 2. To decrease the velocity of sheet flows from hillslope areas.



Note: Erosion Control Measures shall be maintained until landscaping is completed, or as directed by local jurisdiction.



Drainage Criteria Manual (V.3)
File: SF.dwg

Figure C-13
Silt Fence Erosion Barrier