

Welcome

to the

Go Speer Leetsdale Open House

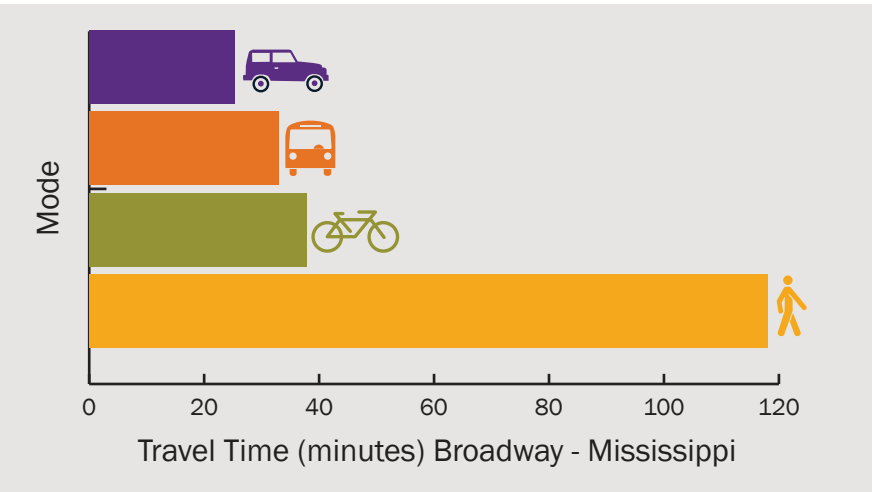
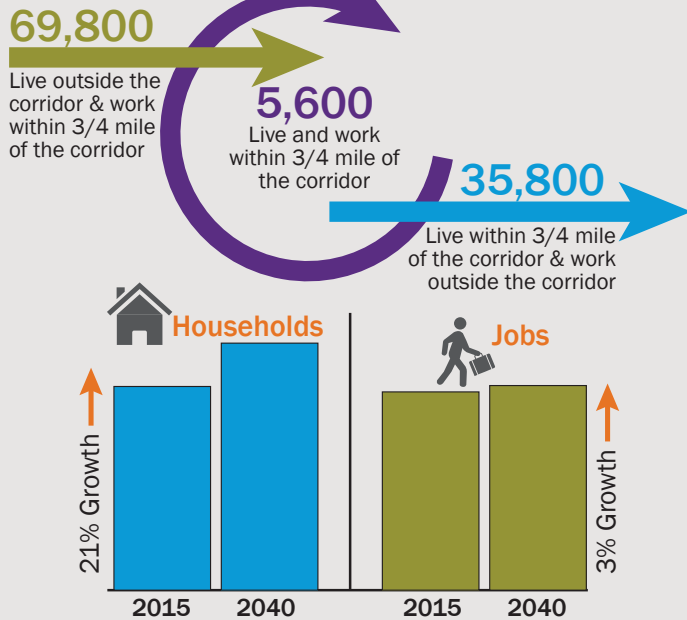


DENVER
THE MILE HIGH CITY

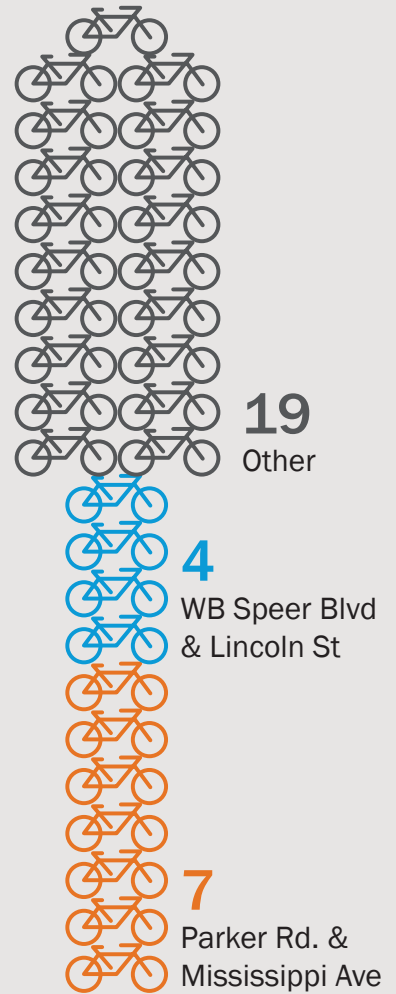
We are pleased you are here
and excited to share with you
the recommended concept
improvements for this
important corridor!

Existing Conditions Summary

CORRIDOR DEMOGRAPHICS



30 Crashes involving bicycles



BIKE/PED CRASHES (at corridor intersections 2012-2014)



PURPOSE AND NEED

PURPOSE:

The purpose of the Go Speer Leetsdale project is to implement improvements along the Speer/Leetsdale corridor that equitably and cost-effectively accommodate the corridor's current and growing person-trip demand. Go Speer Leetsdale will work to attain the corridor vision by enhancing existing transportation options and providing additional mobility and access options for all individuals using the corridor while improving quality of life and enhancing economic development opportunities.

Bicycle Mobility Needs

- Address inadequate and disconnected bicycle facilities.
- Improve ease of use for bicyclists.
- Address locations with demonstrated bicycle safety concerns.

Pedestrian Mobility Needs

- Address inadequate and disconnected pedestrian facilities.
- Improve ease of use for pedestrians.
- Address locations with demonstrated pedestrian safety concerns.

Transit Mobility Needs

- Accommodate increasing person-trip demand resulting from population and employment growth.
- Address unreliable transit travel times and delay that result from vehicular congestion.
- Accommodate increasing trips while still providing improved corridor-long commutes.
- Address substandard accessibility and rider comfort at transit stops and stations.

Vehicular Mobility Needs

- Reduce congestion resulting from increasing person-trip demand related to population and employment growth.
- Improve operations at intersections and corridor locations with higher than expected crash frequency and severity.

Livability Needs

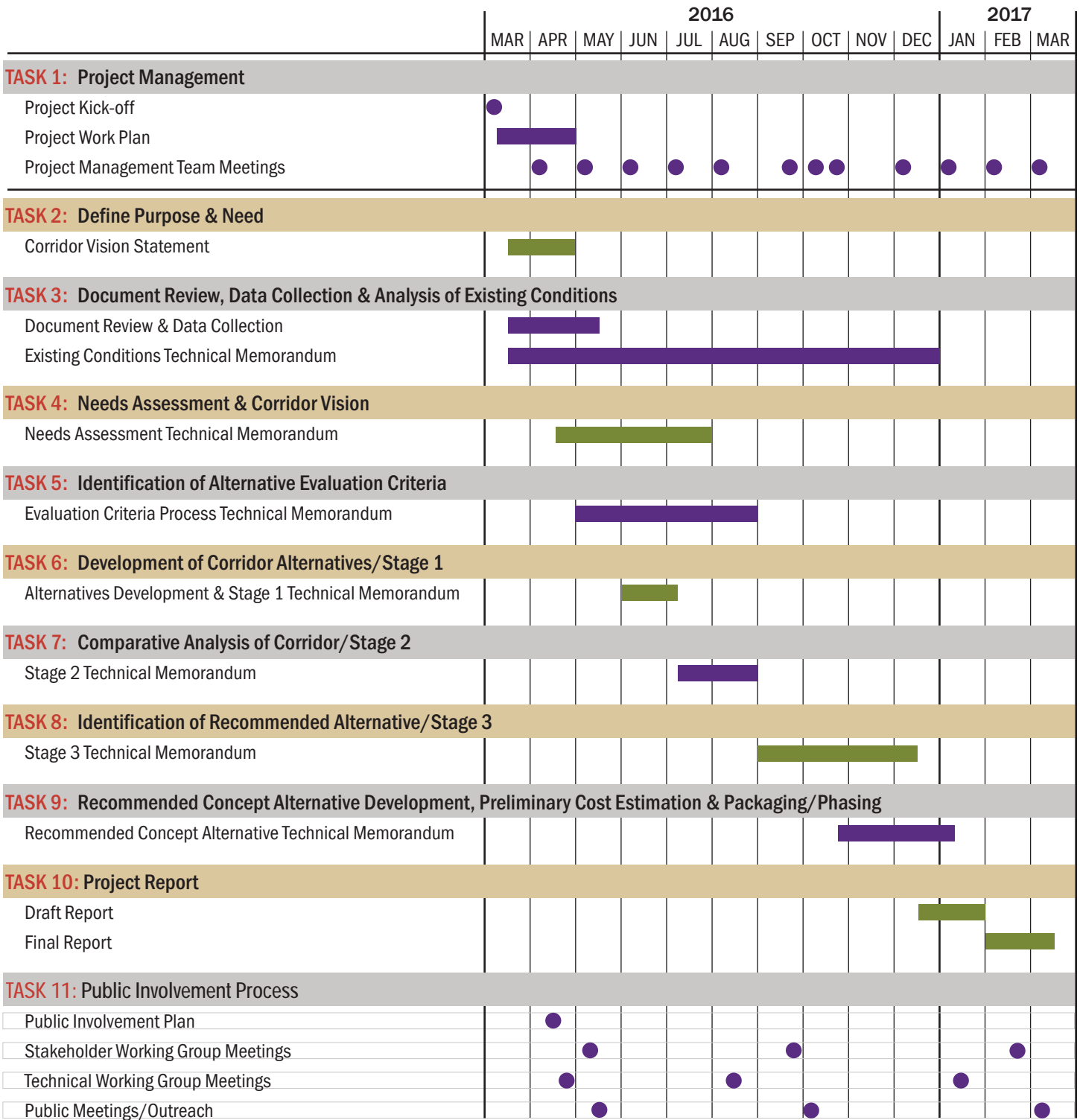
- Provide transportation solutions that support livability concepts for everyday life by a range of transportation modes.

Transportation Access and Equity Needs

- Identify convenient and cost-effective mobility options for all users of the corridor.



Project Schedule





VISION STATEMENTS

Speer Leetsdale Corridor is a place where . . .

- ■ ■ transportation systems and facilities contribute to “complete communities” by promoting choices for the comfortable and efficient movement of people and goods, inspiring sustainable urban development patterns and providing convenient, safe and convenient access to jobs and other activities.
- ■ ■ there is a viable choice to leave automobiles at home and take advantage of an efficient, safe, well-maintained, comfortable and seamless network of transit and accessible pedestrian and bicycle routes.
- ■ ■ technology advances out of the lab and onto the street in support of an innovative and highly functional multimodal corridor.
- ■ ■ regional and local agencies, businesses and stakeholders partner to protect the environment and to design and help to implement a corridor that is a source of community pride and healthy living.