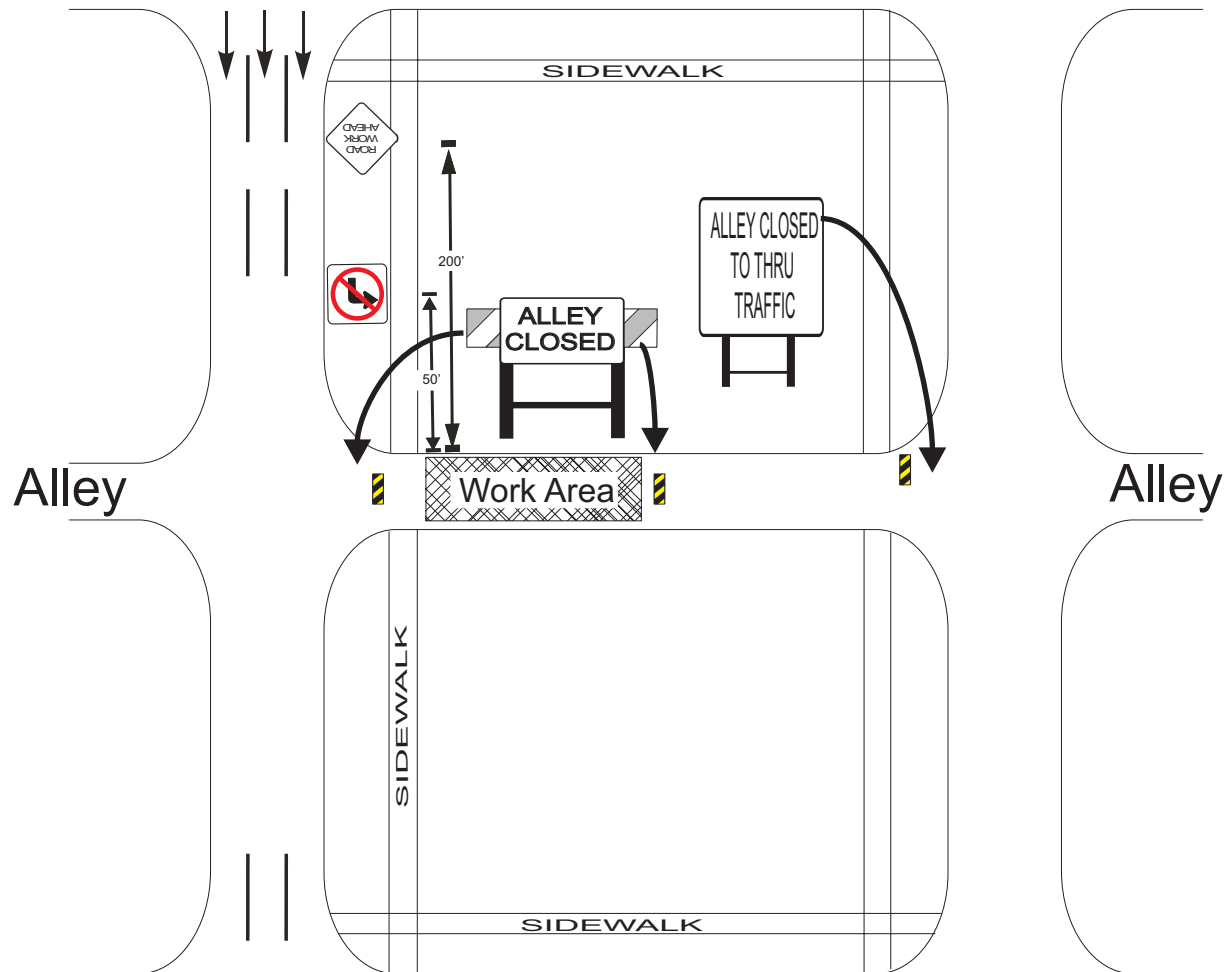


\*Contractor must resolve all local access and safety issues.

\*Contractor must give notice to all local residents and businesses prior to alley closure.

\* All barricades, cones, and signs must be in accordance with the latest edition of the Manual on Uniform Traffic Control Devices.



**Indicate North on Plan**

Do not block or encumber sidewalks at any time

Drawing Not to Scale

City and County of Denver Department of Public Works Division of Engineering Services	
Denver Typical Traffic Control Plan	
Partial Alley Closure, Off of Collector	
Prepared by	E.V
	Revised 11/24/09