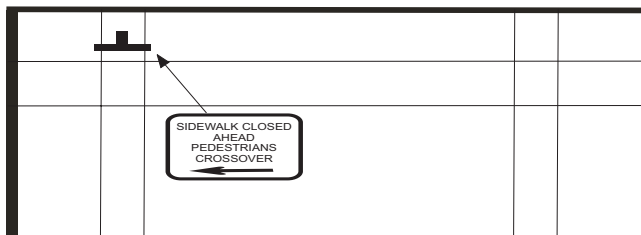
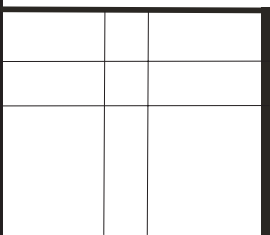
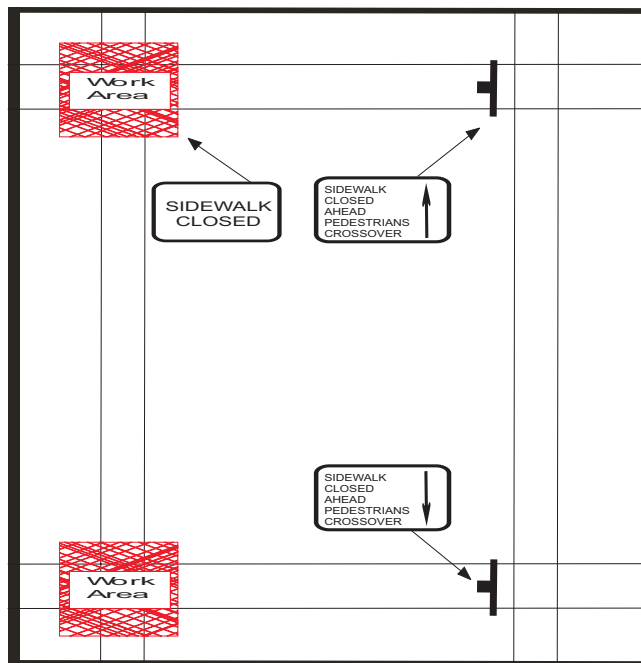
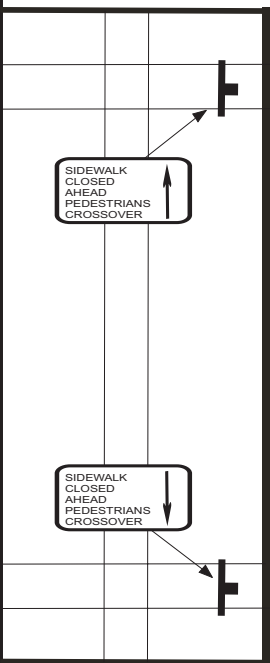
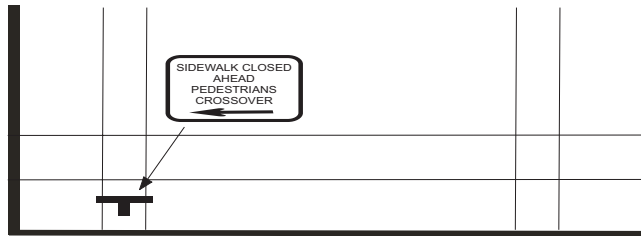
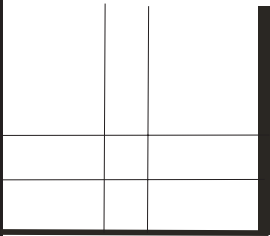


\* Contractor must resolve all local access and safety issues.

\*All barricades, cones, and signs must be in accordance with the latest edition of the Manual on Uniform Traffic Code Devices (MUTCD).



Do not block or encumber sidewalks at any time.

Drawing Not to Scale

Indicate North on Plan

City and County of Denver  
Department of Public Works  
Division of Engineering Services

Denver Typical Traffic Control Plan

Sidewalk Closure - 2 corners

Prepared by

E.V

Revised 12/17/09