



WELCOME

Public Open House

CITY AND COUNTY OF DENVER BROADWAY ARIZONA TO EXPOSITION & I-25 INTERCHANGE

Denver City Council President – Chris Nevitt

City Project Manager – Michael Harmer, PE

Consultant Team Project Manager – Jeanne Sharps, PE

May 5, 2011



GOAL OF MEETING

- Provide information on design progress.
- Summarize current project funding.
- Outline the project next steps.

PROJECT PURPOSE

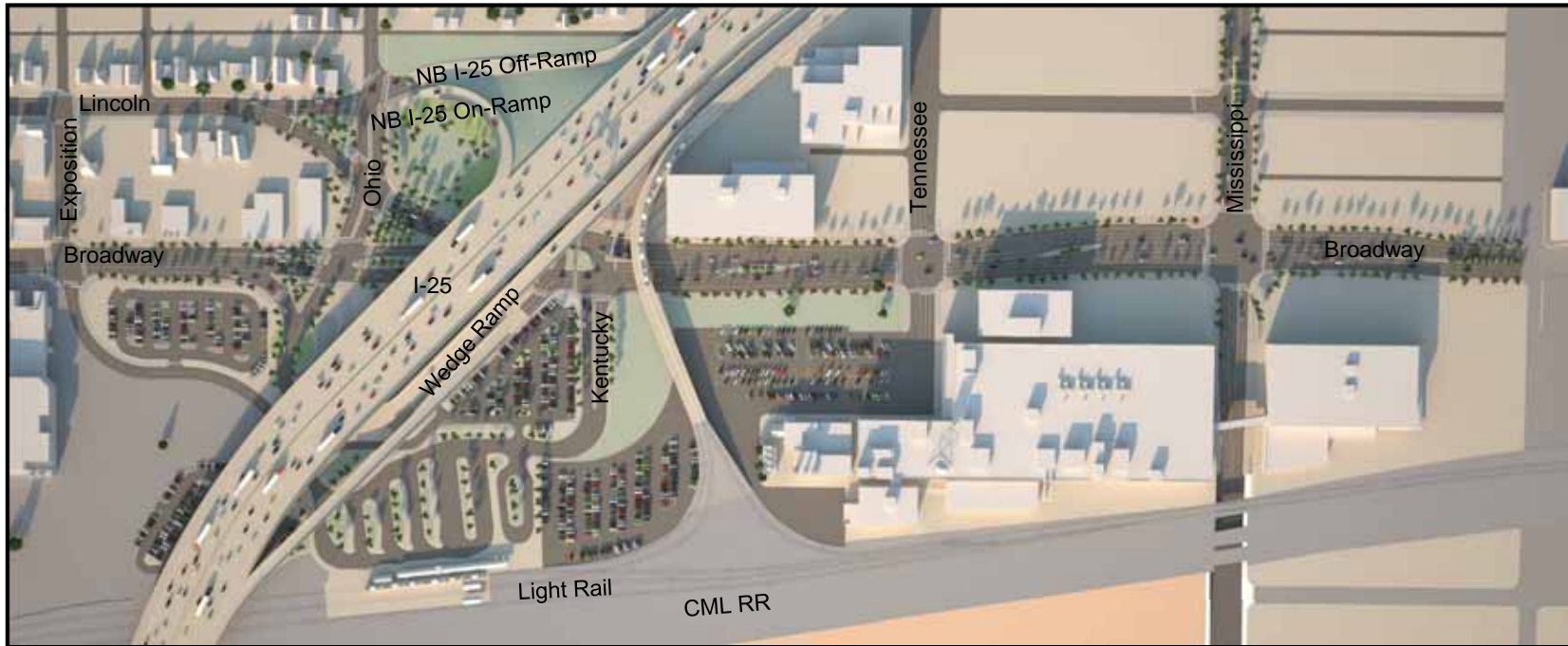
- To construct infrastructure improvements to South Broadway from Arizona Avenue to Exposition Avenue, and to the I-25 Interchange.
- To create a corridor that provides safe and efficient mobility for all transportation modes (pedestrian, bicycle, transit and automobile).
- To promote transit-oriented development.

SOUTH BROADWAY



ARIZONA TO EXPOSITION & I-25 INTERCHANGE

PROJECT SIMULATION

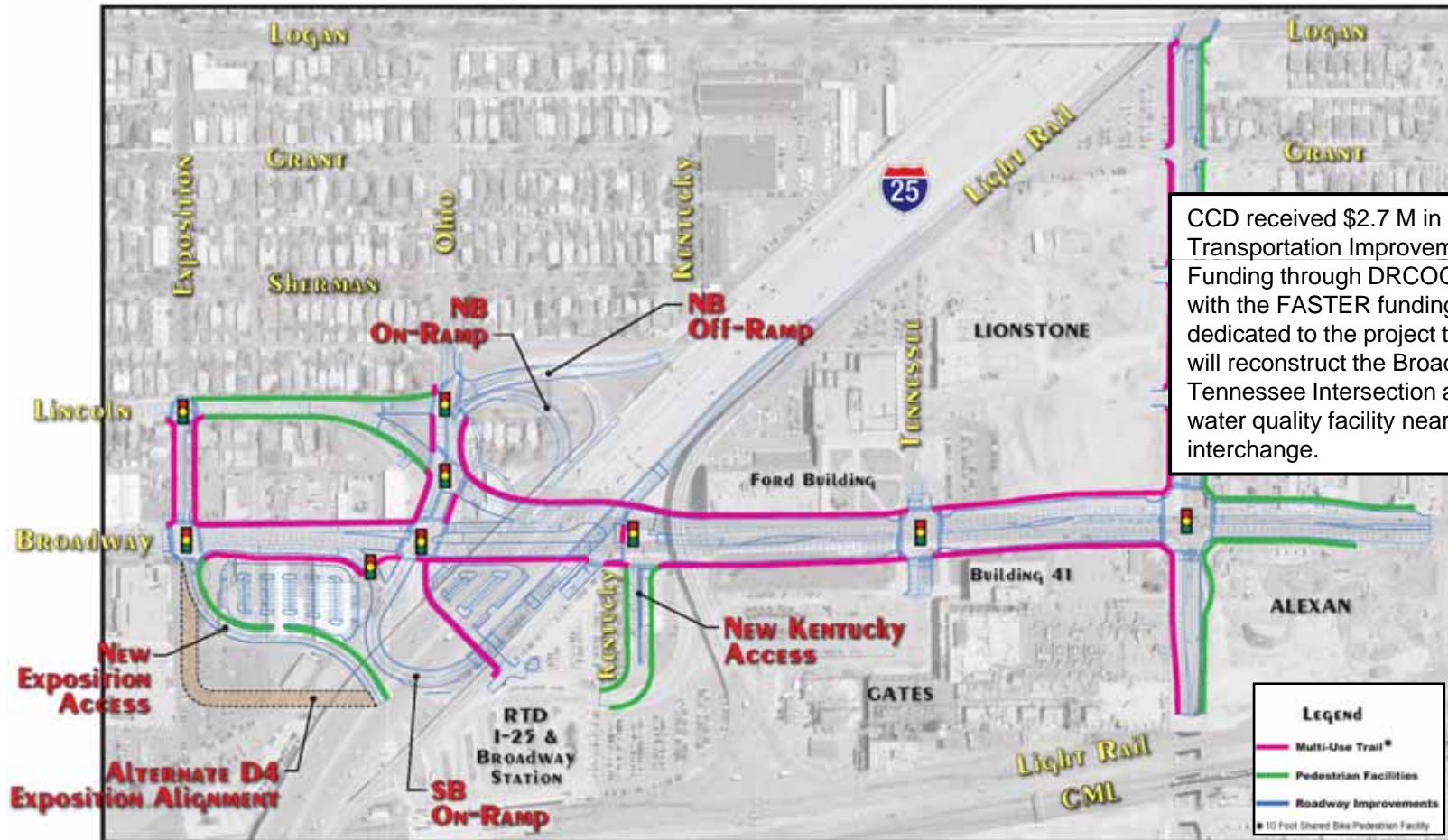


SOUTH BROADWAY



ARIZONA TO EXPOSITION & I-25 INTERCHANGE

PROJECT MAP – CURRENT DESIGN



SOUTH BROADWAY



ARIZONA TO EXPOSITION & I-25 INTERCHANGE

BIKE - PED CONNECTIVITY

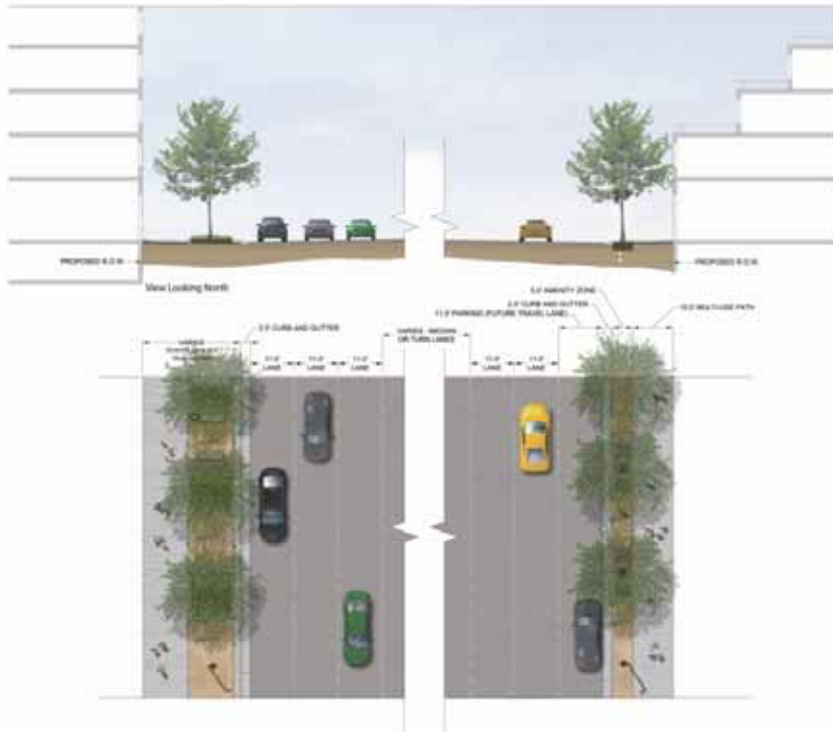


SOUTH BROADWAY

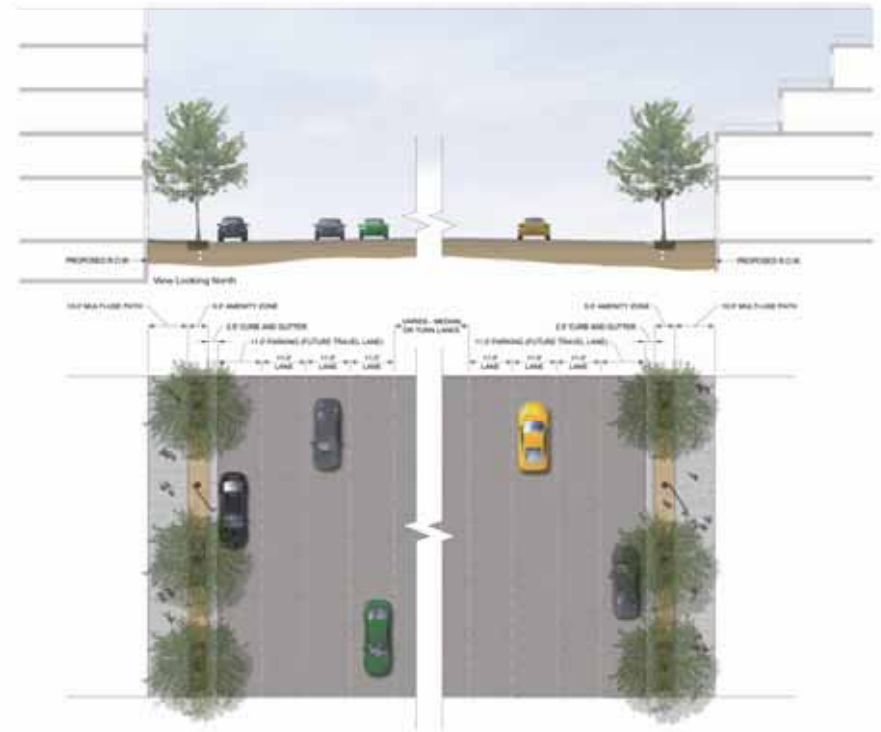


ARIZONA TO EXPOSITION & I-25 INTERCHANGE

TYPICAL SECTIONS - BROADWAY



Broadway - South of Mississippi



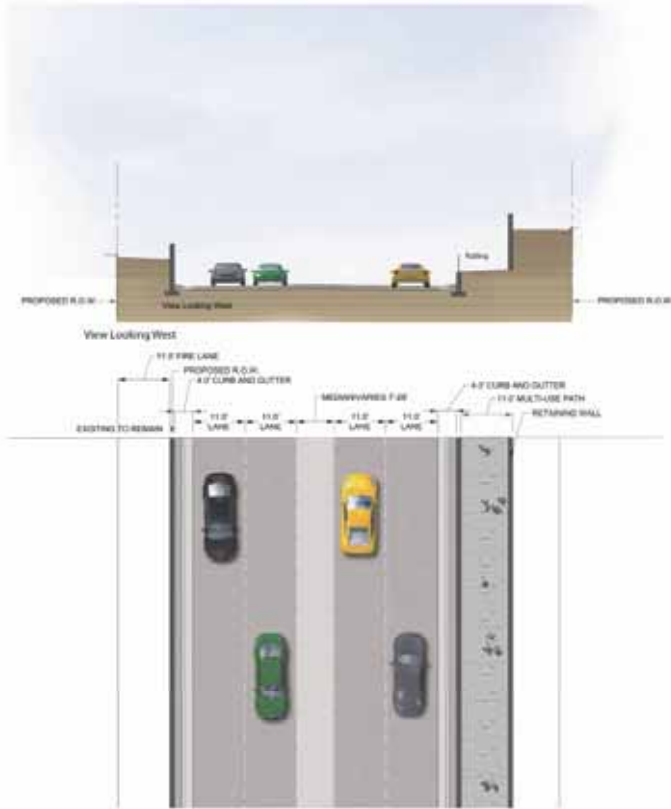
Broadway - North of Mississippi

SOUTH BROADWAY

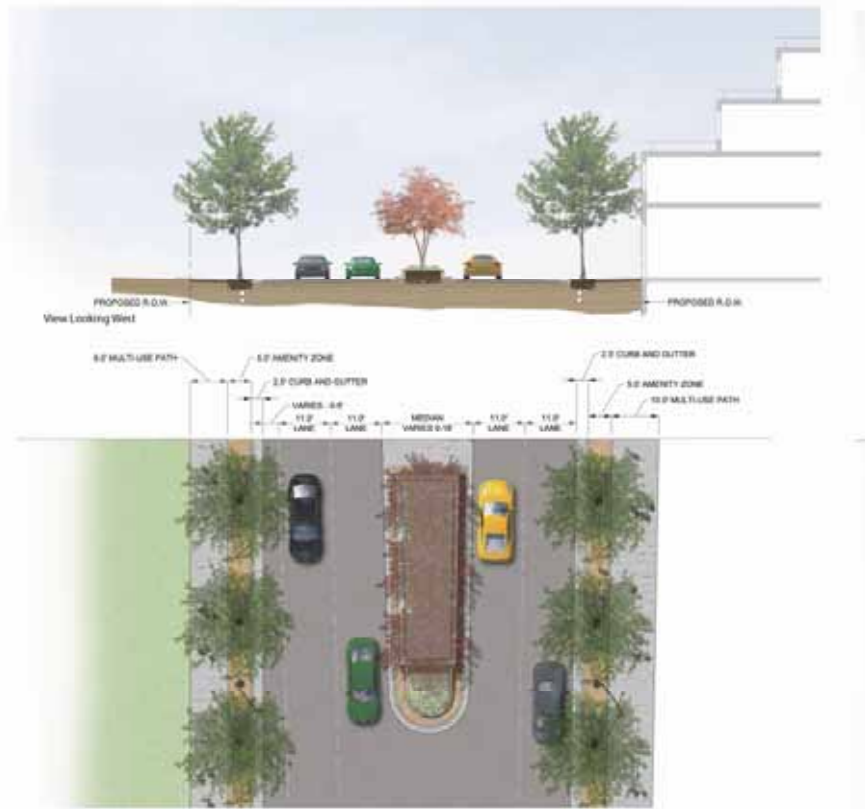


ARIZONA TO EXPOSITION & I-25 INTERCHANGE

TYPICAL SECTIONS – MISSISSIPPI



Mississippi – West of Broadway



Mississippi – East of Broadway

SOUTH BROADWAY



ARIZONA TO EXPOSITION & I-25 INTERCHANGE

CURRENT DESIGN vs. CONCEPTUAL DESIGN



CHANGES UNDER CONSIDERATION

- 1 Exposition - Lincoln to Broadway Improvements
- 2 Exposition Extension - Modified Alignment
- 3 SB Broadway to SB I-25 On-Ramp Dedicated Right Turn Lane - Added
- 4 NB Broadway at Ohio - Modified Alignment
- 5 Kentucky West of Broadway - Modified Alignment
- 6 Broadway S. of Tennessee - Modified Alignment - Building 41
- 7 Broadway East and West Sidewalk - Widened
- 8 Mississippi North Sidewalk - Widened
- 9 Water Quality Pond - West - Under Consideration
- 10 Water Quality Ponds - East
- 11 SB I-25 On-Ramp Structure - Lengthen from 2 Spans to 4 Spans
- 12 SB I-25 On-Ramp Pedestrian Underpass - Widen from 18 feet to 49 feet
- 13 Broadway/Mississippi Modified Turn Radius
- 14 Broadway/Mississippi Sidewalk - Bulbout at NE Corner

North 
Not to Scale

LEGEND

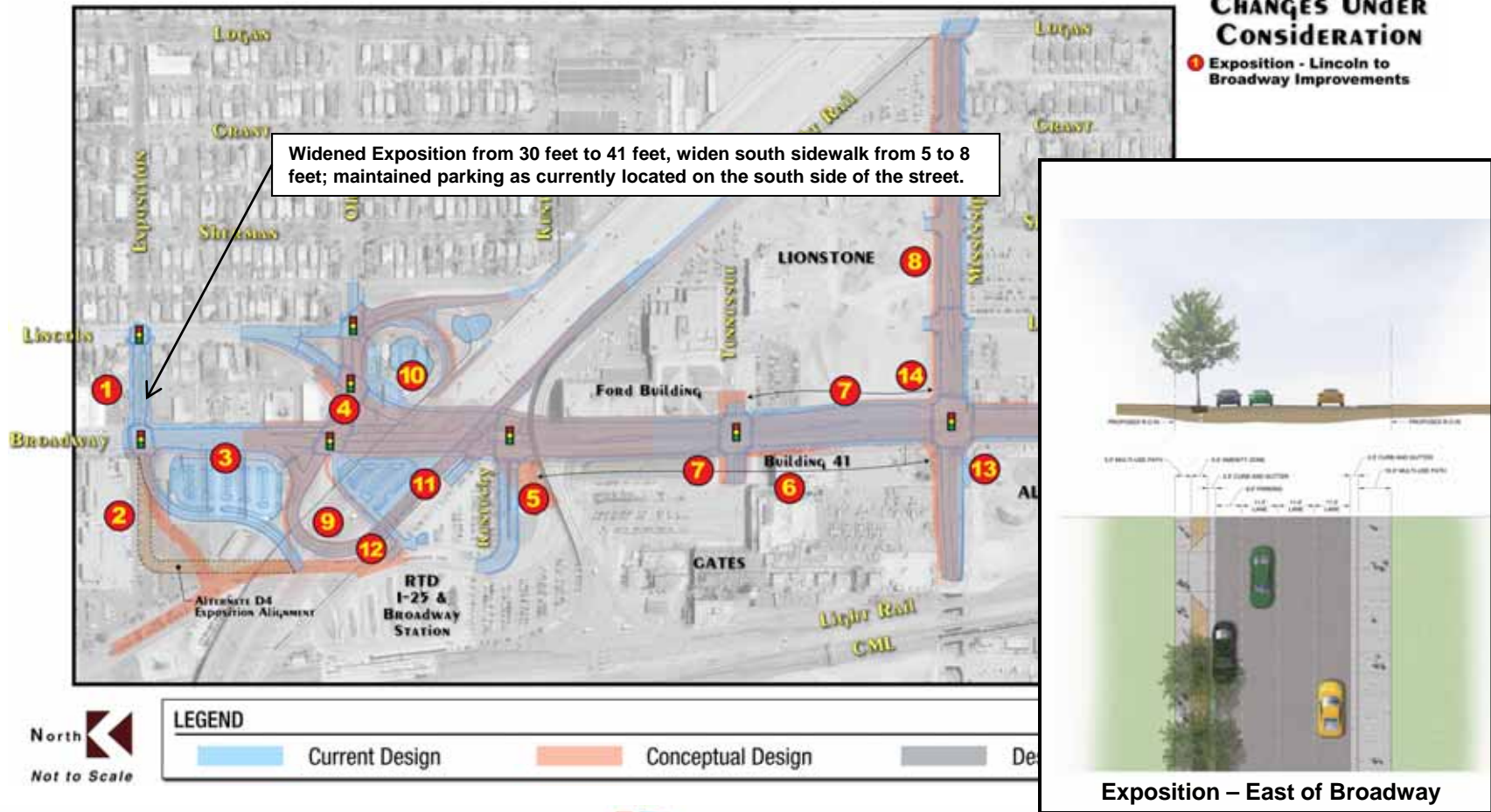
- Current Design
- Conceptual Design
- Design Overlap

SOUTH BROADWAY



ARIZONA TO EXPOSITION & I-25 INTERCHANGE

CURRENT DESIGN vs. CONCEPTUAL DESIGN

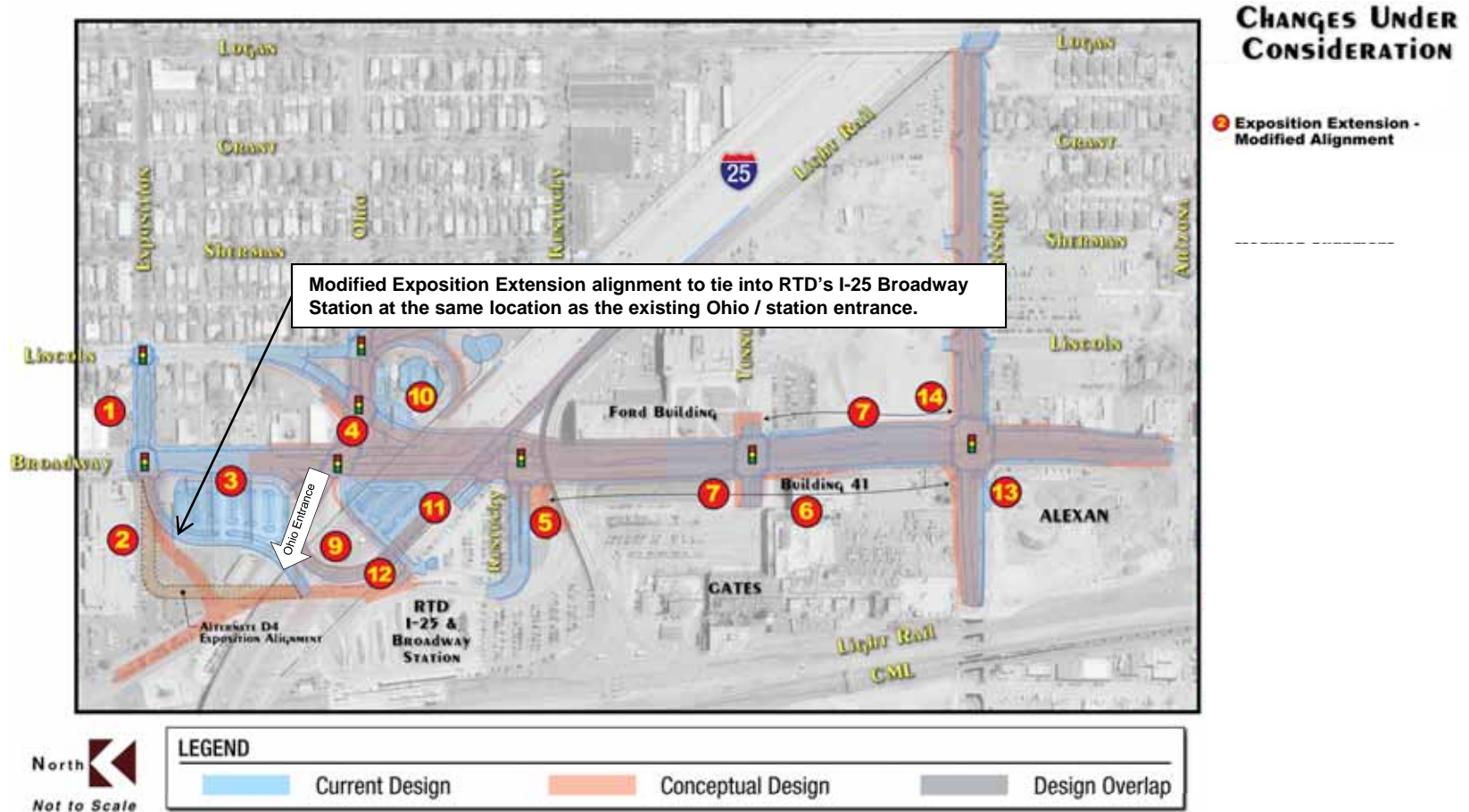


SOUTH BROADWAY



ARIZONA TO EXPOSITION & I-25 INTERCHANGE

CURRENT DESIGN vs. CONCEPTUAL DESIGN



SOUTH BROADWAY



ARIZONA TO EXPOSITION & I-25 INTERCHANGE

CURRENT DESIGN vs. CONCEPTUAL DESIGN



CHANGES UNDER CONSIDERATION

- 1 SB Broadway to SB I-25 On-Ramp Dedicated Right Turn Lane - Added

North 
Not to Scale

LEGEND

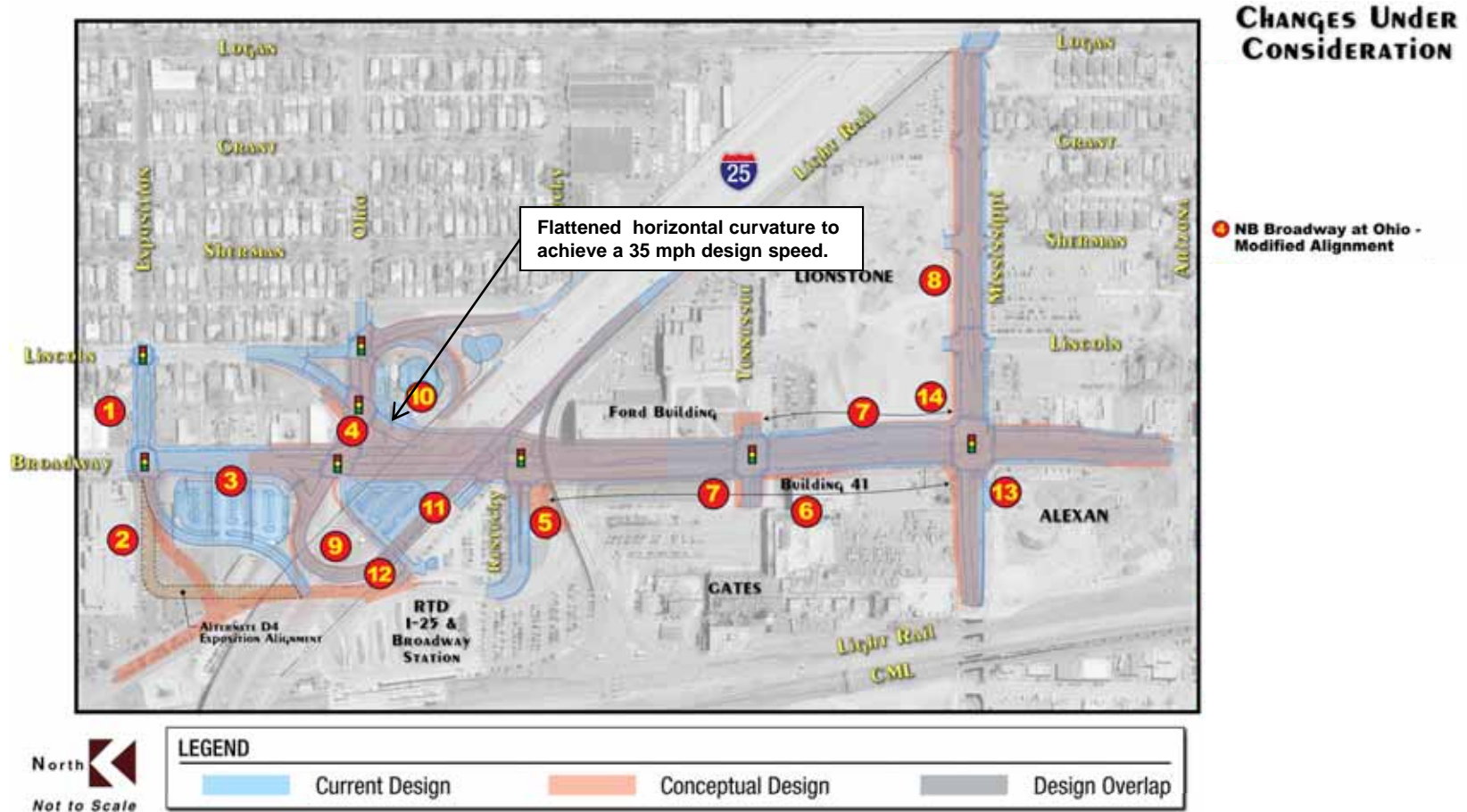
-  Current Design
-  Conceptual Design
-  Design Overlap

SOUTH BROADWAY



ARIZONA TO EXPOSITION & I-25 INTERCHANGE

CURRENT DESIGN vs. CONCEPTUAL DESIGN

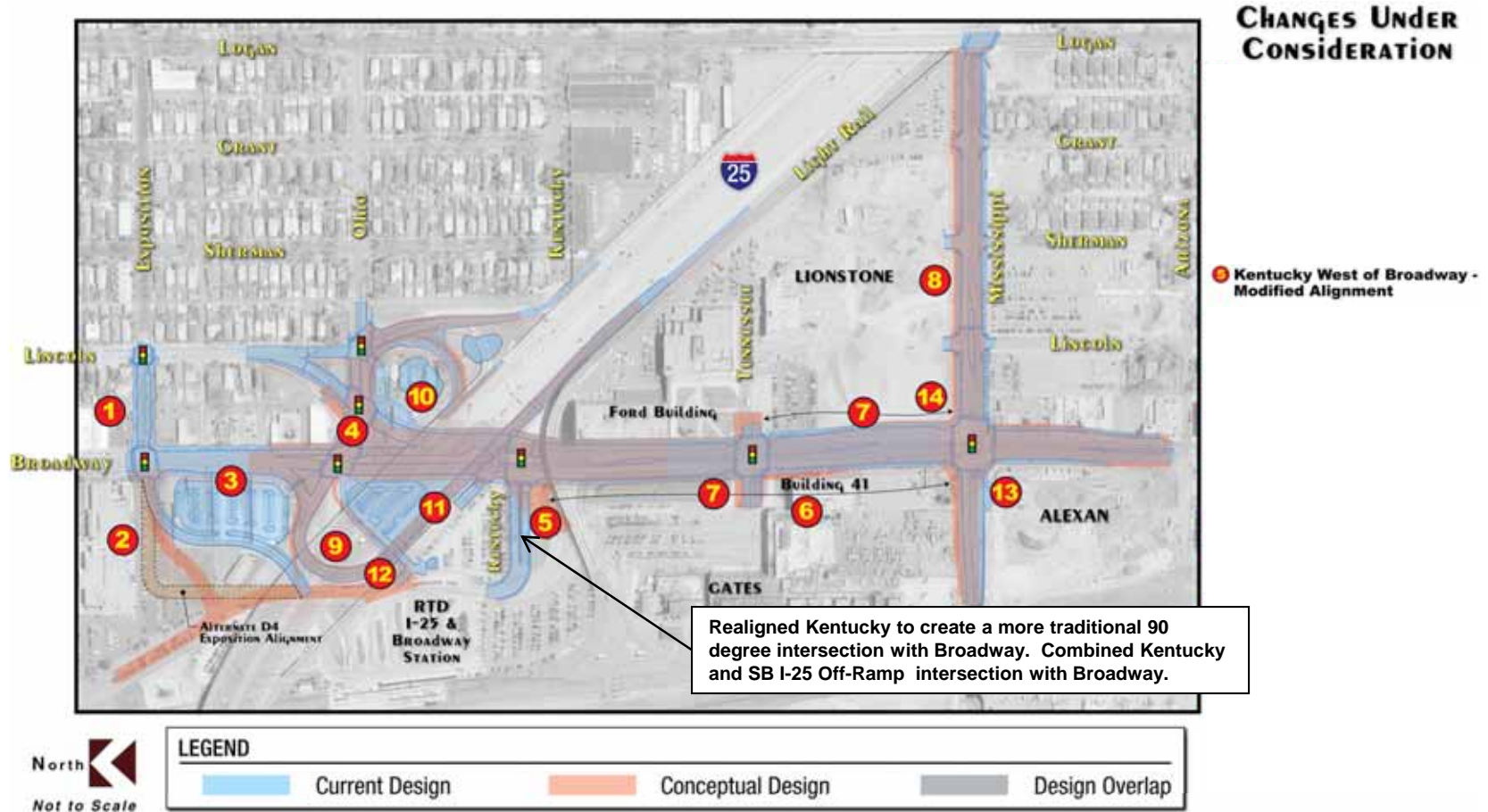


SOUTH BROADWAY



ARIZONA TO EXPOSITION & I-25 INTERCHANGE

CURRENT DESIGN vs. CONCEPTUAL DESIGN

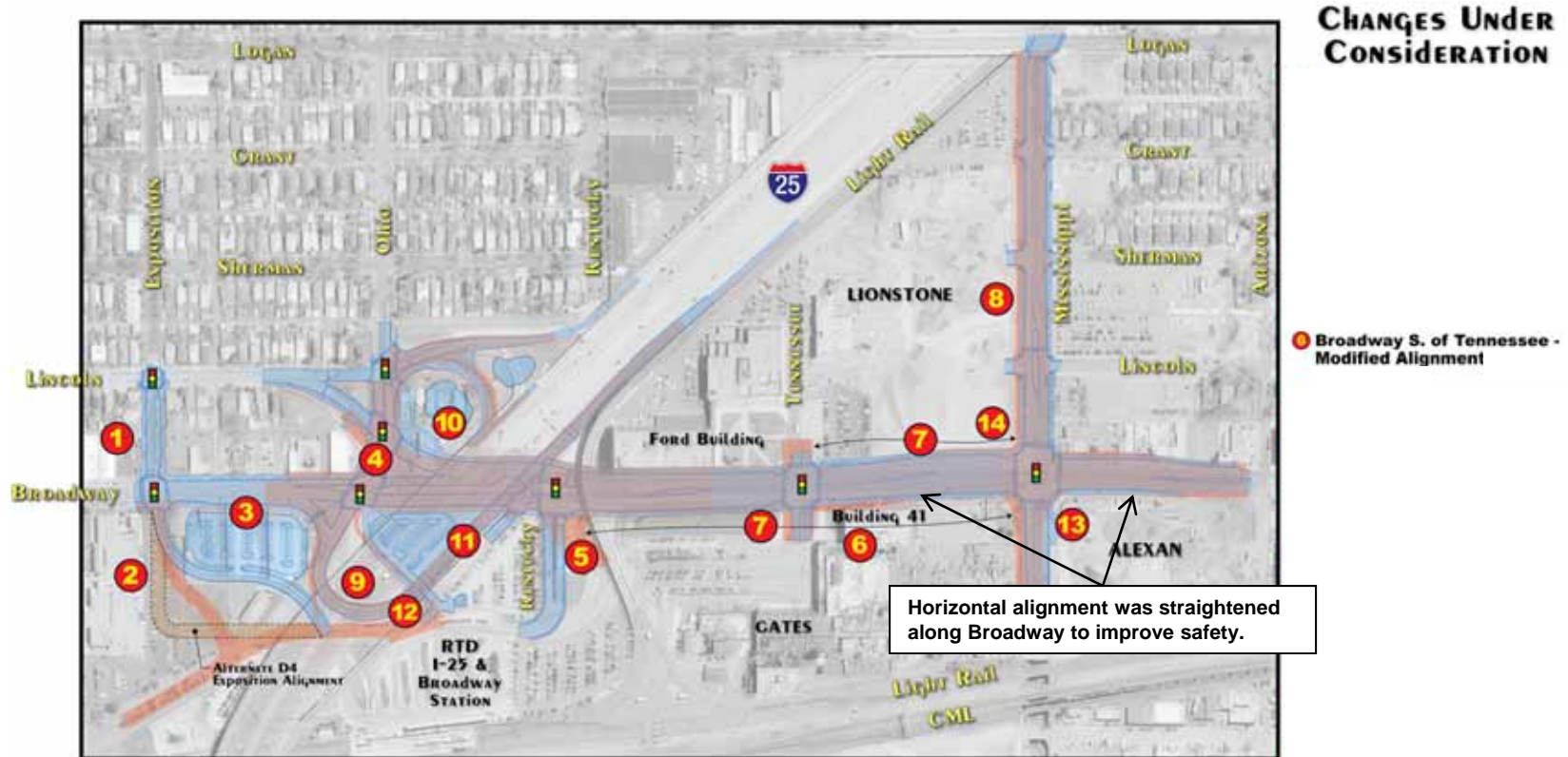


SOUTH BROADWAY



ARIZONA TO EXPOSITION & I-25 INTERCHANGE

CURRENT DESIGN vs. CONCEPTUAL DESIGN



North 
Not to Scale

LEGEND

 Current Design

 Conceptual Design

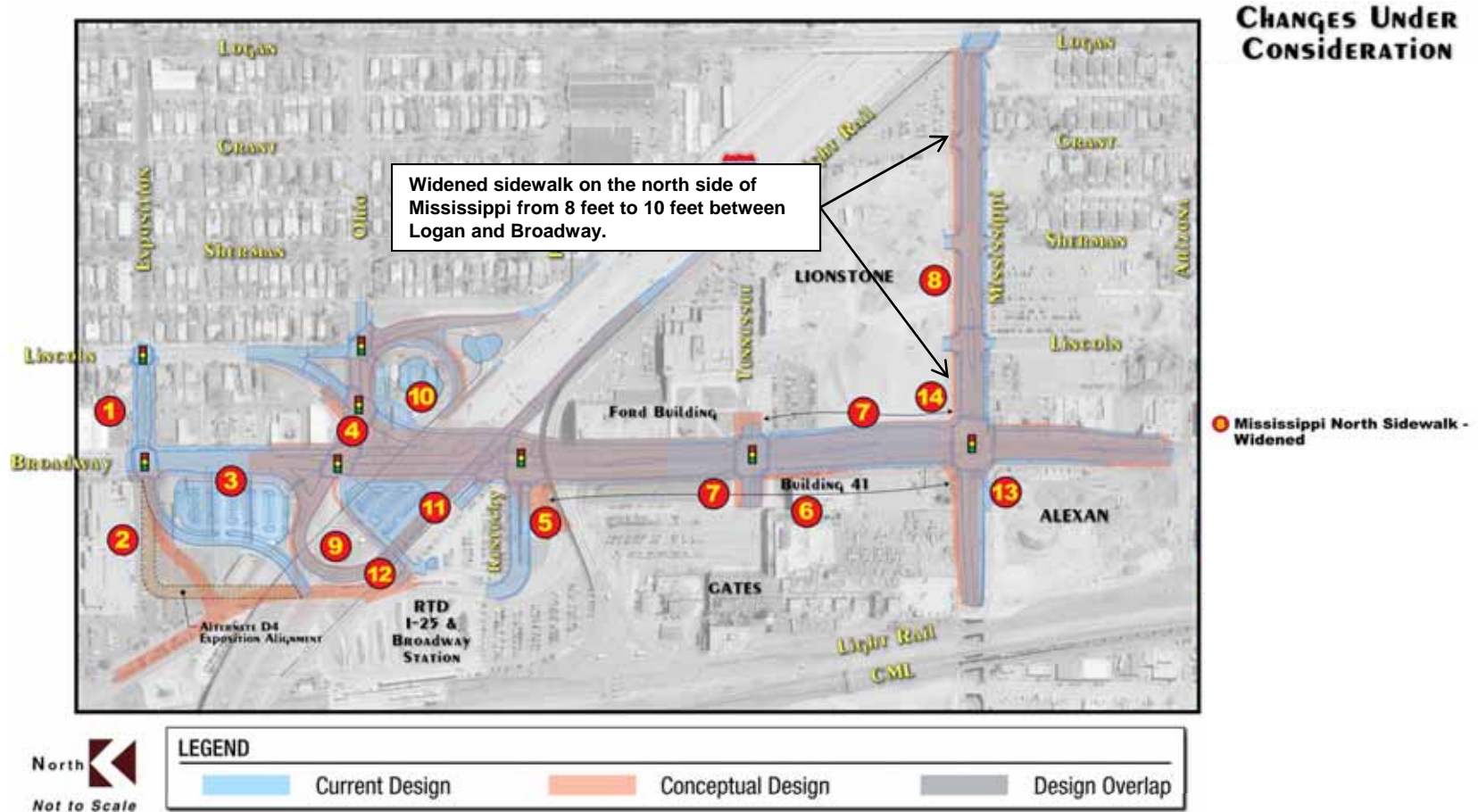
 Design Overlap

SOUTH BROADWAY



ARIZONA TO EXPOSITION & I-25 INTERCHANGE

CURRENT DESIGN vs. CONCEPTUAL DESIGN



SOUTH BROADWAY



ARIZONA TO EXPOSITION & I-25 INTERCHANGE

CURRENT DESIGN vs. CONCEPTUAL DESIGN



CHANGES UNDER CONSIDERATION

● Water Quality Pond - West - Under Consideration

North 
Not to Scale

LEGEND

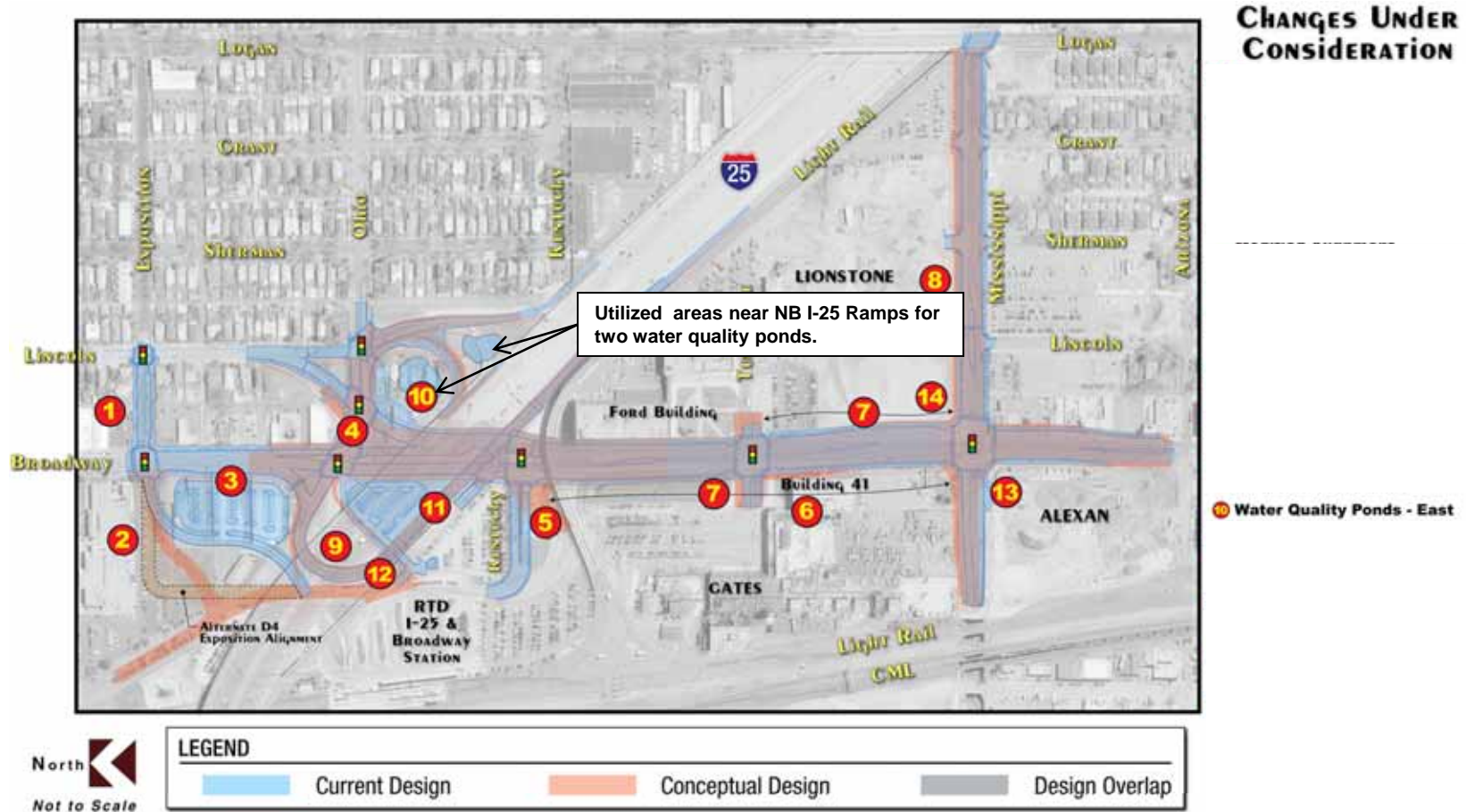
	Current Design		Conceptual Design		Design Overlap
---	----------------	---	-------------------	---	----------------

SOUTH BROADWAY



ARIZONA TO EXPOSITION & I-25 INTERCHANGE

CURRENT DESIGN vs. CONCEPTUAL DESIGN

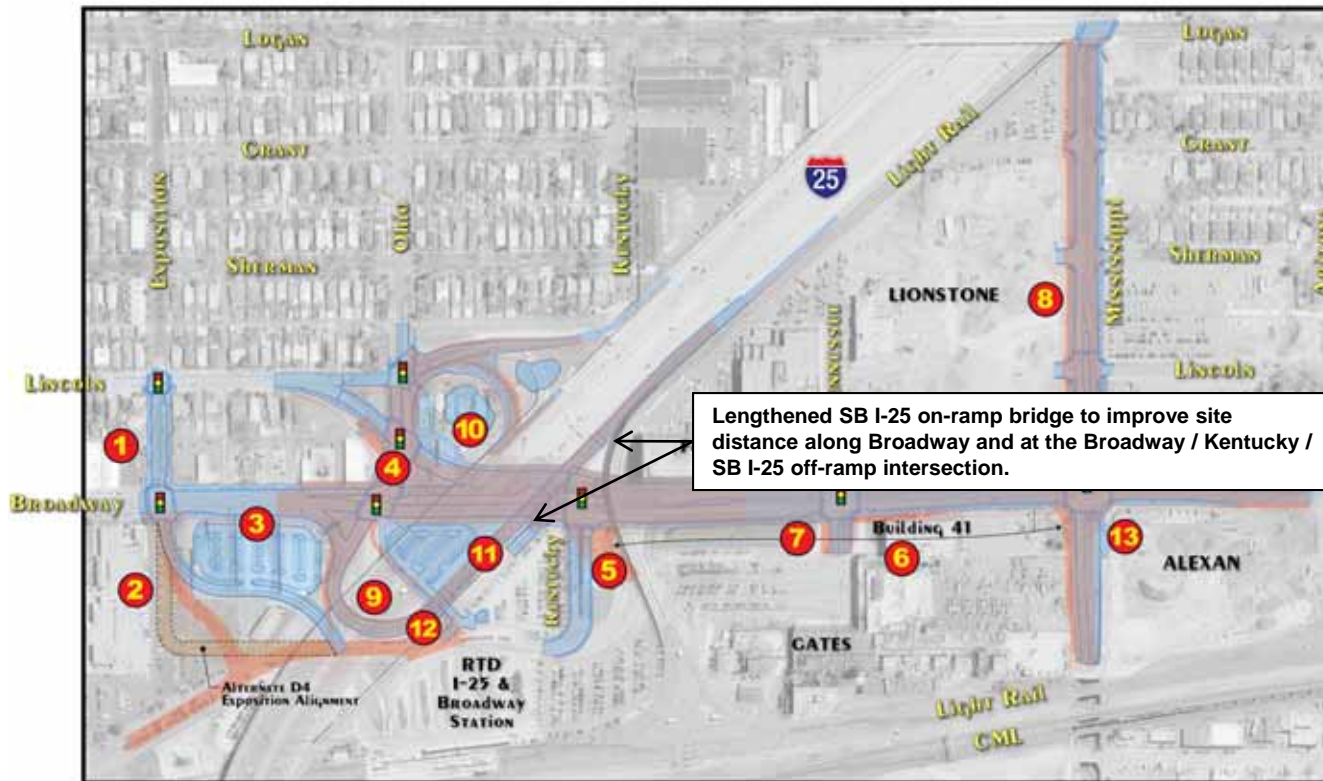


SOUTH BROADWAY



ARIZONA TO EXPOSITION & I-25 INTERCHANGE

CURRENT DESIGN vs. CONCEPTUAL DESIGN



CHANGES UNDER CONSIDERATION

- ⑩ SB I-25 On-Ramp Structure - Lengthen from 2 Spans to 4 Spans

North 
Not to Scale

LEGEND

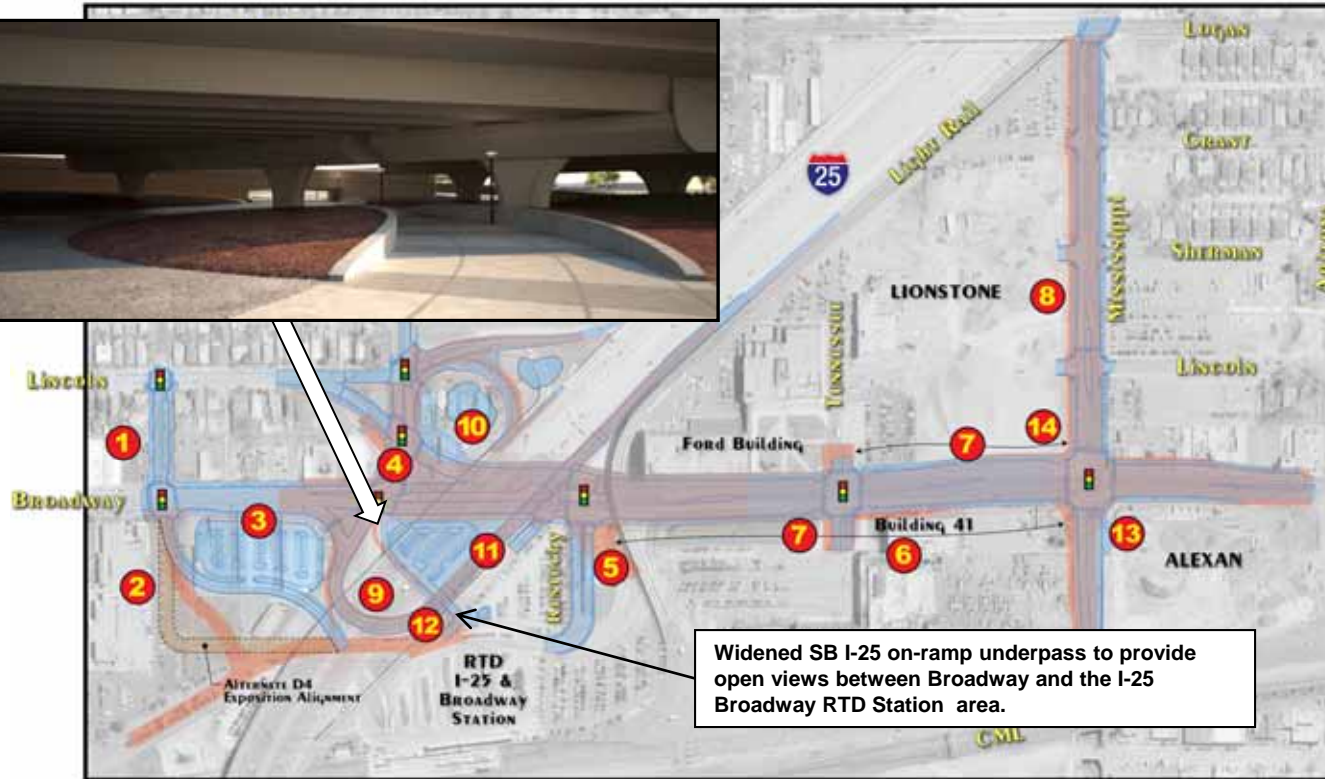
-  Current Design
-  Conceptual Design
-  Design Overlap

SOUTH BROADWAY



ARIZONA TO EXPOSITION & I-25 INTERCHANGE

CURRENT DESIGN vs. CONCEPTUAL DESIGN



CHANGES UNDER CONSIDERATION

- 14 SB I-25 On-Ramp Pedestrian Underpass - Widen from 18 feet to 49 feet

North 
Not to Scale

LEGEND

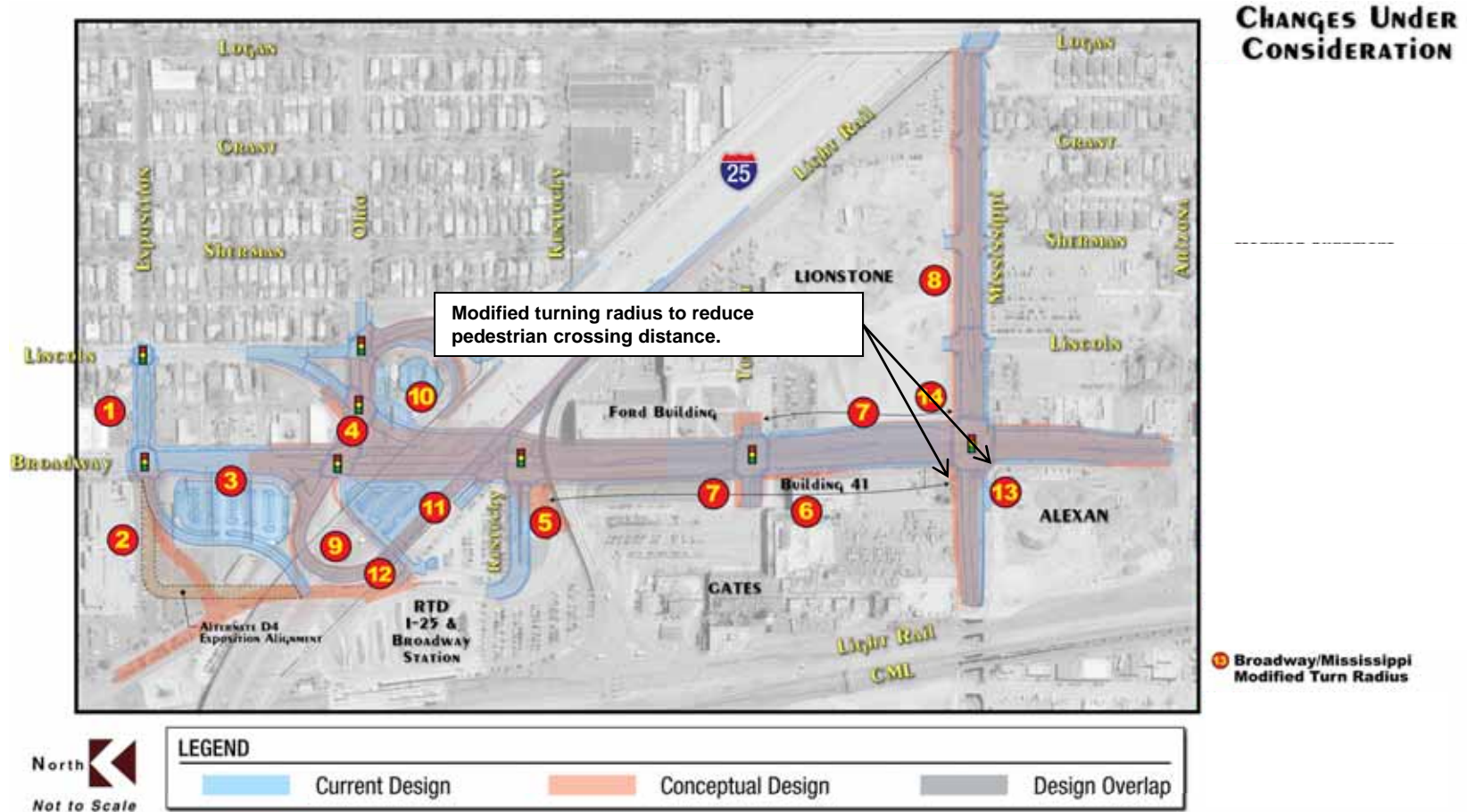
-  Current Design
-  Conceptual Design
-  Design Overlap

SOUTH BROADWAY



ARIZONA TO EXPOSITION & I-25 INTERCHANGE

CURRENT DESIGN vs. CONCEPTUAL DESIGN



ROW COMPARISON CURRENT vs. CONCEPTUAL

ROW

Conceptual Design (9.7 acres)
 Interchange = 6.5 acres
 Broadway + Loop Ramp = 3.2 acres

Current Design (9.1 acres to 11.4 acres)
 Interchange = 6.4 acres
 Broadway + Loop Ramp = 2.7 acres to 5.0 acres



SOUTH BROADWAY



ARIZONA TO EXPOSITION & I-25 INTERCHANGE

SUSTAINABILITY





NEXT STEPS

- **Final design of TIP portion of project, reconstruct Broadway from Kentucky to Mississippi.**
- **Investigate funding opportunities for full project build-out.**
- **Periodic updated to project website.**

Project Website: www.sobroi25.com



SOUTH BROADWAY



ARIZONA TO EXPOSITION & I-25 INTERCHANGE

QUESTIONS





PROJECT CONTACT INFORMATION

Michael Harmer, PE

CCD Project Manager
City and County of Denver
201 W. Colfax Avenue, Dept. 508
Denver, CO 80202

Phone: 720.913.4525

Email: Michael.Harmer@denvergov.org

Jeanne Sharps, PE

Consultant Project Manager
Felsburg Holt & Ullevig
6300 S. Syracuse Way, Suite 600
Centennial, CO 80111

Phone: 303.721.1440

Email: Jeanne.Sharps@fhueng.com

Project Website: www.sobroi25.com

THANK YOU

