



Observatory Park Playground Improvements

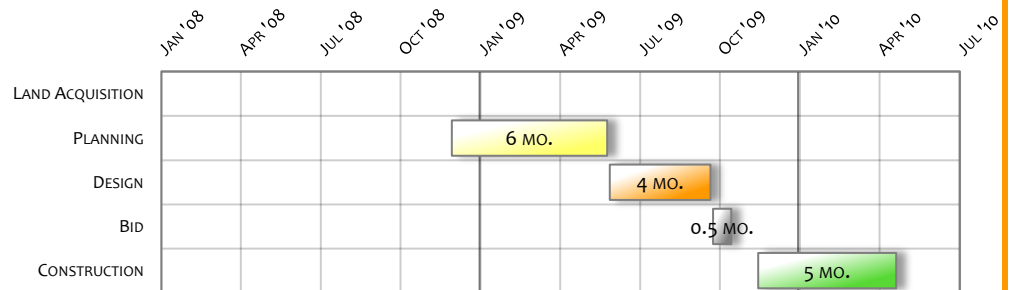
1.04.14.07
2100 S. Fillmore St.
Denver, CO 80210
District 6

Project Overview

Project Scope

Improvements at Observatory Park included a new accessible concrete walkway into the playground, a small plaza for gathering, boulders for seating, enhanced playground equipment, and new site furnishings. The playground includes three play pits: one for intermediate play, one for tot play and one for swings. The intermediate play area features a large play structure, spinners, belt swings, and a sand play area. The tot play area includes a tot structure with a slide, spinners, swings, and a sand play area with ADA-accessible elevated sand table. The playground also features a "walk and learn" path. Each play area includes ADA-accessible surfacing and ramps. New trees and shrub beds were also included in the playground area's re-design, as were irrigation system enhancements aimed at more efficiently irrigating new sod, trees and ornamental shrubs/perennials.

BETTER DENVER BOND PROGRAM
PROJECT COST:
\$231,147



Project Team

Project Manager: Nicole Stahly
Designer(s): Design Concepts
Constructor(s): Colorado Designscapes Inc.



© openstreetmap.org contributors

Project Delivery

OCOC

Project Photos

New site furnishings



New playground equipment



Improved landscaping



New playground equipment



New playground equipment

