



Public Infrastructure TOD - Louisiana & Pearl Station

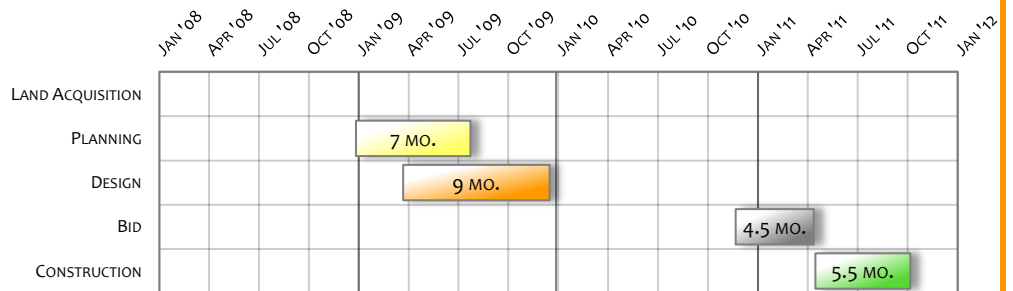
1.06.13.01
755 E. Louisiana Ave.
Denver, CO 80210
District 7

Project Overview

Project Scope

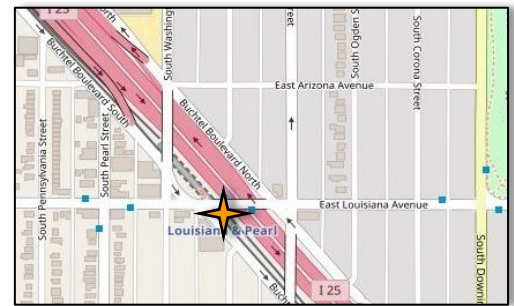
The Public Infrastructure TOD - Louisiana & Pearl Station project involved improvements at two existing intersections. At the intersection of East Louisiana Avenue and South Logan Street the existing asphalt surface was restored and the traffic signal reconstructed along with its associated controls and enclosures. New curb ramps and curb and gutter were installed at all four corners of the intersection, and both corners to the south of East Louisiana Avenue received new storm drain inlets. Next, a curb extension was installed at the southeast corner of the East Louisiana Avenue and Buchtel Boulevard South intersection, shortening the pedestrian crossing and helping to make waiting pedestrians more visible to drivers. Two new curb ramps were installed as part of the curb extension, and all four existing crosswalks were removed and replaced.

BETTER DENVER BOND PROGRAM
PROJECT COST:
\$461,163



Project Team

Project Manager: Kim Blair
Designer(s): Huitt-Zollars Inc.
Constructor(s): Technology Constructors Inc.



© openstreetmap.org contributors

Project Delivery

OCBC

Project Photos

Improved sidewalks and curb ramps



New traffic signals



New storm inlet



New crosswalk striping



Curb extension and new crosswalk striping

