

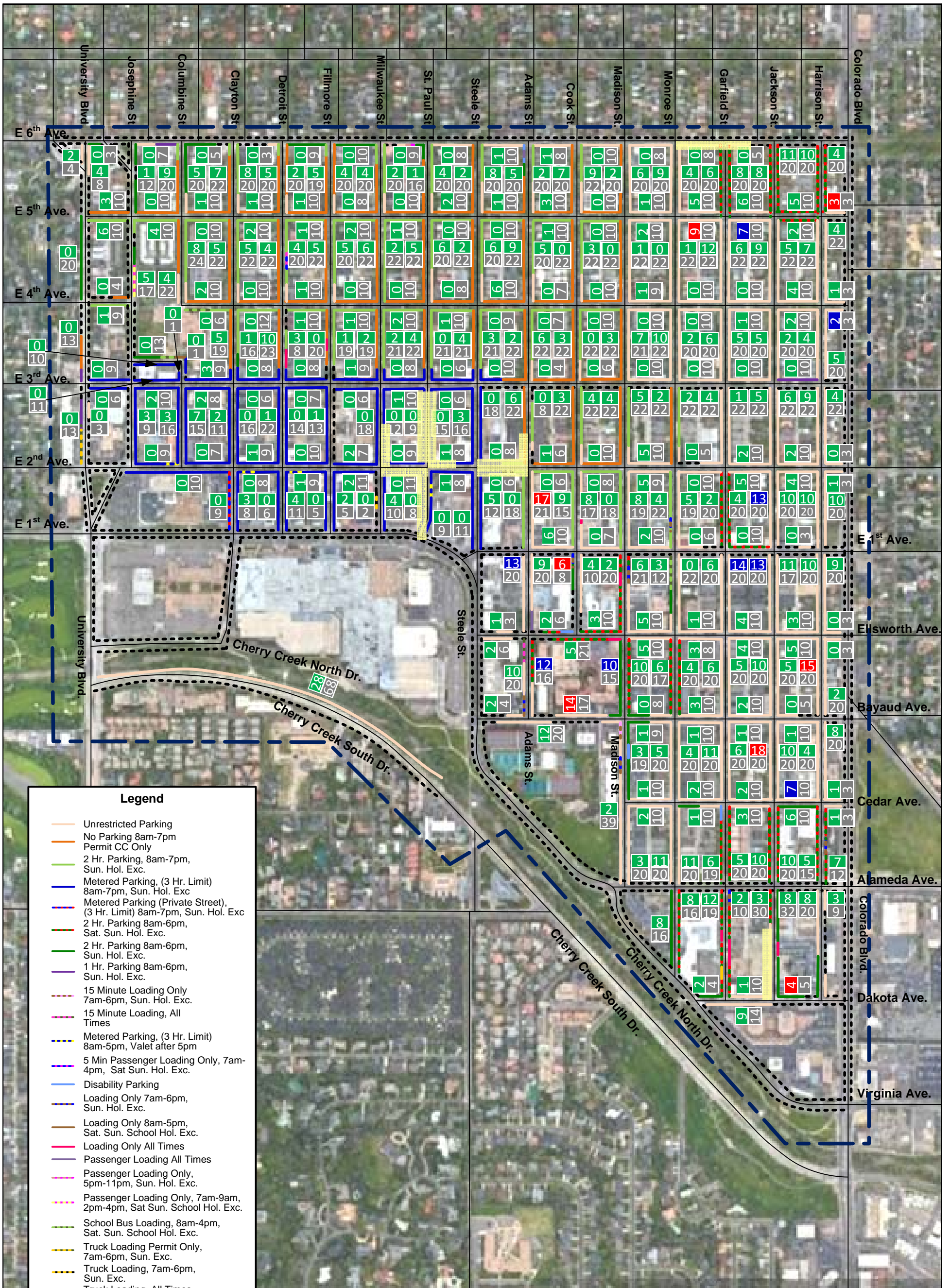
Legend

- Unrestricted Parking
- No Parking 8am-7pm, Permit CC Only
- 2 Hr. Parking, 8am-7pm, Sun. Hol. Exc.
- Metered Parking, (3 Hr. Limit) 8am-7pm, Sun. Hol. Exc.
- Metered Parking (Private Street), (3 Hr. Limit) 8am-7pm, Sun. Hol. Exc.
- 2 Hr. Parking 8am-6pm, Sat. Sun. Hol. Exc.
- 2 Hr. Parking 8am-6pm, Sun. Hol. Exc.
- 1 Hr. Parking 8am-6pm, Sun. Hol. Exc.
- 15 Minute Loading Only 7am-6pm, Sun. Hol. Exc.
- 15 Minute Loading, All Times
- Metered Parking, (3 Hr. Limit) 8am-5pm, Valet after 5pm
- 5 Min Passenger Loading Only, 7am-4pm, Sat Sun. Hol. Exc.
- Disability Parking
- Loading Only 7am-6pm, Sun. Hol. Exc.
- Loading Only 8am-5pm, Sat. Sun. School Hol. Exc.
- Loading Only All Times
- Passenger Loading All Times
- Passenger Loading Only, 5pm-11pm, Sun. Hol. Exc.
- Passenger Loading Only, 7am-9am, 2pm-4pm, Sat Sun. School Hol. Exc.
- School Bus Loading, 8am-4pm, Sat. Sun. School Hol. Exc.
- Truck Loading Permit Only, 7am-6pm, Sun. Exc.
- Truck Loading, 7am-6pm, Sun. Exc.
- Truck Loading, All Times
- No Parking
- Construction

Study Area Summary

Unrestricted	2,279
No Parking 8am-7pm, Permit CC Only	891
2 Hour Parking 8am-7pm, Sun. Hol. Exc.	690
Metered Parking (3 Hr. Limit) 8am-7pm, Sun. Hol. Exc.	581
Metered Parking (Private Street) (3 Hr.) 8am-7pm, Sun. Hol. Exc.	9
2 Hour Parking 8am-6pm., Sat. Sun. Hol. Exc.	443
2 Hour Parking 8am-6pm., Sun. Hol. Exc.	245
1 Hour Parking 8am-6pm, Sun. Hol. Exc.	27
15 Min Loading Only 7am-6pm, Sun. Hol. Exc.	2
15 Min Loading Only All Times	5
Metered Parking (3 Hr. Limit) 8am-5pm, Valet After 5pm.	8
5 Min Passenger Loading Only 7am-4pm, Sat. Sun. Hol. Exc.	5
Disability Parking Only	8
Loading Only 7am-6pm, Sun. Hol. Exc.	15
Loading Only 8am-5pm, Sat. Sun. School Hol. Exc.	3
Loading Only All Times	15
Passenger Loading Only All Times	6
Passenger Loading Only 5pm-11pm, Sun. Hol. Exc.	3
Passenger Loading Only 7am-9am, 2pm-4pm, Sat. Sun. Hol. Exc.	8
School Bus Loading Only 8am-4pm, Sat. Sun. School Hol. Exc.	6
Truck Loading Permit Only 7am-6pm, Sun. Hol. Exc.	3
Truck Loading 7am-6pm, Sun. Hol. Exc.	2
Truck Loading All Times	2
Total Spaces	5,256

Figure 1
Cherry Creek Parking Restrictions



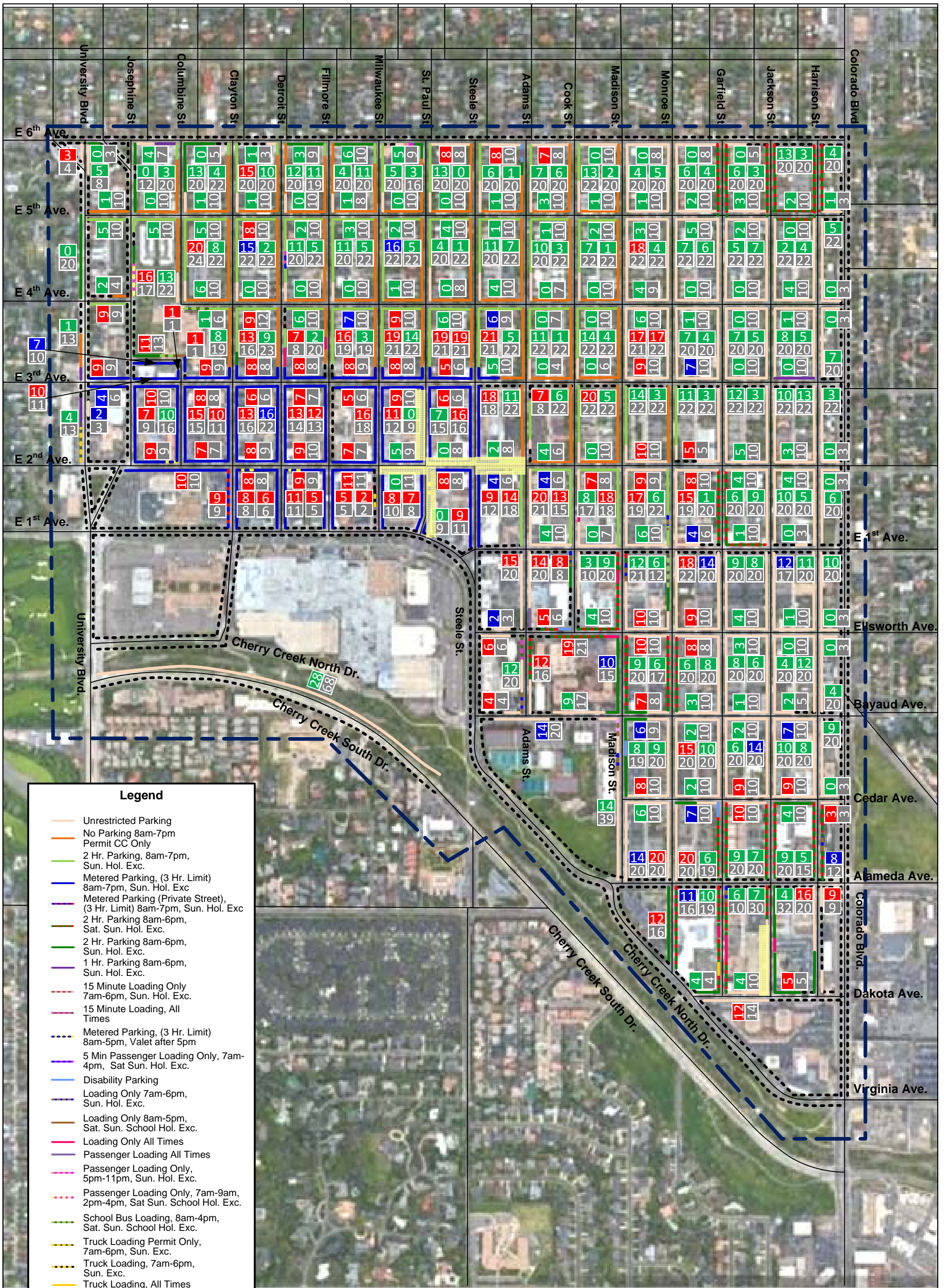
Legend

- Unrestricted Parking
- No Parking 8am-7pm
- Permit CC Only
- 2 Hr. Parking, 8am-7pm, Sun. Hol. Exc.
- Metered Parking, (3 Hr. Limit) 8am-7pm, Sun. Hol. Exc
- Metered Parking (Private Street), (3 Hr. Limit) 8am-7pm, Sun. Hol. Exc
- 2 Hr. Parking 8am-6pm, Sat. Sun. Hol. Exc.
- 2 Hr. Parking 8am-6pm, Sun. Hol. Exc.
- 1 Hr. Parking 8am-6pm, Sun. Hol. Exc.
- 15 Minute Loading Only 7am-6pm, Sun. Hol. Exc.
- 15 Minute Loading, All Times
- Metered Parking, (3 Hr. Limit) 8am-5pm, Valet after 5pm
- 5 Min Passenger Loading Only, 7am-4pm, Sat Sun. Hol. Exc.
- Disability Parking
- Loading Only 7am-6pm, Sun. Hol. Exc.
- Loading Only 8am-5pm, Sat. Sun. School Hol. Exc.
- Loading Only All Times
- Passenger Loading All Times
- Passenger Loading Only, 5pm-11pm, Sun. Hol. Exc.
- Passenger Loading Only, 7am-9am, 2pm-4pm, Sat Sun. School Hol. Exc.
- School Bus Loading, 8am-4pm, Sat. Sun. School Hol. Exc.
- Truck Loading Permit Only, 7am-6pm, Sun. Exc.
- Truck Loading, 7am-6pm, Sun. Exc.
- Truck Loading, All Times
- No Parking
- Construction

XX 0 - 65% Occupancy
XX 66 - 74% Occupancy
XX 75 - 100% Occupancy
XX Total number of spaces

Study Area Summary	
Occupied	1,275
Total	5,235
Percent Occupancy	24%

Figure 2
Cherry Creek Parking Occupancy
 Thursday, April 5, 2018 5AM
 Wednesday, May 16, 2018 5AM



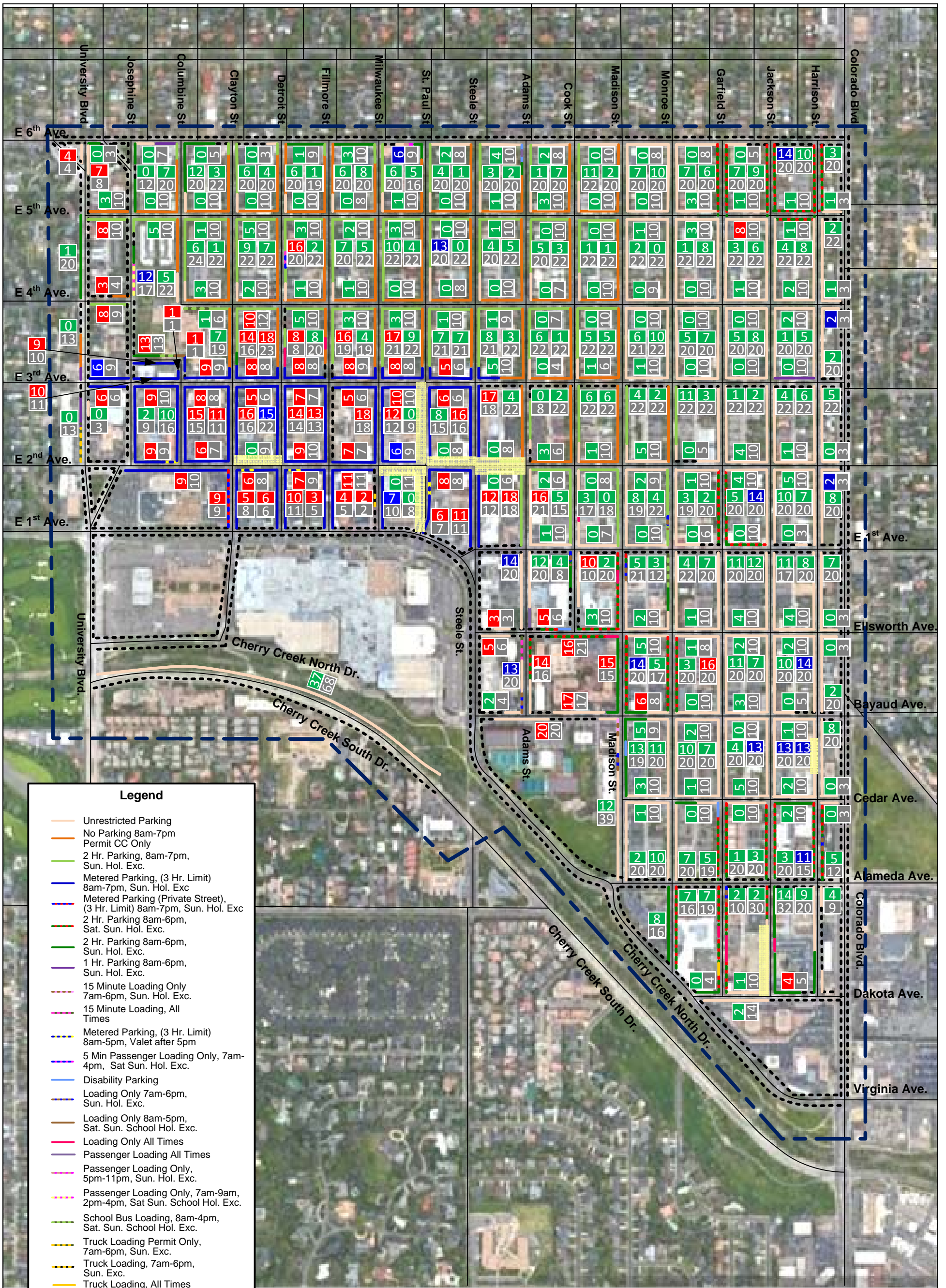
Legend

- Unrestricted Parking
- No Parking 8am-7pm
- Permit CC Only
- 2 Hr. Parking, 8am-7pm, Sun. Hol. Exc.
- Metered Parking, (3 Hr. Limit) 8am-7pm, Sun. Hol. Exc.
- Metered Parking (Private Street), (3 Hr. Limit) 8am-7pm, Sun. Hol. Exc.
- 2 Hr. Parking 8am-6pm, Sat. Sun. Hol. Exc.
- 2 Hr. Parking 8am-6pm, Sun. Hol. Exc.
- 1 Hr. Parking 8am-6pm, Sun. Hol. Exc.
- 15 Minute Loading Only 7am-6pm, Sun. Hol. Exc.
- 15 Minute Loading, All Times
- Metered Parking, (3 Hr. Limit) 8am-5pm, Valet after 5pm
- 5 Min Passenger Loading Only, 7am-4pm, Sat Sun. Hol. Exc.
- Disability Parking
- Loading Only 7am-6pm, Sun. Hol. Exc.
- Loading Only 8am-5pm, Sat. Sun. School Hol. Exc.
- Loading Only All Times
- Passenger Loading All Times
- Passenger Loading Only, 5pm-11pm, Sun. Hol. Exc.
- Passenger Loading Only, 7am-9am, 2pm-4pm, Sat Sun. School Hol. Exc.
- School Bus Loading, 8am-4pm, Sat. Sun. School Hol. Exc.
- Truck Loading Permit Only, 7am-6pm, Sun. Exc.
- Truck Loading, 7am-6pm, Sun. Exc.
- Truck Loading, All Times
- No Parking
- Construction

XX	0 - 65% Occupancy
XX	66 - 74% Occupancy
XX	75 - 100% Occupancy
XX	Total number of spaces

Study Area Summary	
Occupied	2,485
Total	5,256
Percent Occupancy	47%

Figure 3
Cherry Creek Parking Occupancy
 Thursday, April 5, 2018 11AM
 Wednesday, May 23, 2018 11AM



Legend

- Unrestricted Parking
- No Parking 8am-7pm
- Permit CC Only
- 2 Hr. Parking, 8am-7pm, Sun. Hol. Exc.
- Metered Parking, (3 Hr. Limit) 8am-7pm, Sun. Hol. Exc.
- Metered Parking (Private Street), (3 Hr. Limit) 8am-7pm, Sun. Hol. Exc.
- 2 Hr. Parking 8am-6pm, Sat. Sun. Hol. Exc.
- 2 Hr. Parking 8am-6pm, Sun. Hol. Exc.
- 1 Hr. Parking 8am-6pm, Sun. Hol. Exc.
- 15 Minute Loading Only 7am-6pm, Sun. Hol. Exc.
- 15 Minute Loading, All Times
- Metered Parking, (3 Hr. Limit) 8am-5pm, Valet after 5pm
- 5 Min Passenger Loading Only, 7am-4pm, Sat Sun. Hol. Exc.
- Disability Parking
- Loading Only 7am-6pm, Sun. Hol. Exc.
- Loading Only 8am-5pm, Sat. Sun. School Hol. Exc.
- Loading Only All Times
- Passenger Loading All Times
- Passenger Loading Only, 5pm-11pm, Sun. Hol. Exc.
- Passenger Loading Only, 7am-9am, 2pm-4pm, Sat Sun. School Hol. Exc.
- School Bus Loading, 8am-4pm, Sat. Sun. School Hol. Exc.
- Truck Loading Permit Only, 7am-6pm, Sun. Exc.
- Truck Loading, 7am-6pm, Sun. Exc.
- Truck Loading, All Times
- No Parking
- Construction

XX 0 - 65% Occupancy
XX 66 - 74% Occupancy
XX 75 - 100% Occupancy
XX Total number of spaces

Study Area Summary	
Occupied	1,909
Total	5,256
Percent Occupancy	36%

Figure 4
Cherry Creek Parking Occupancy
 Friday, April 6, 2018 7PM
 Friday, June 1, 2018 7PM