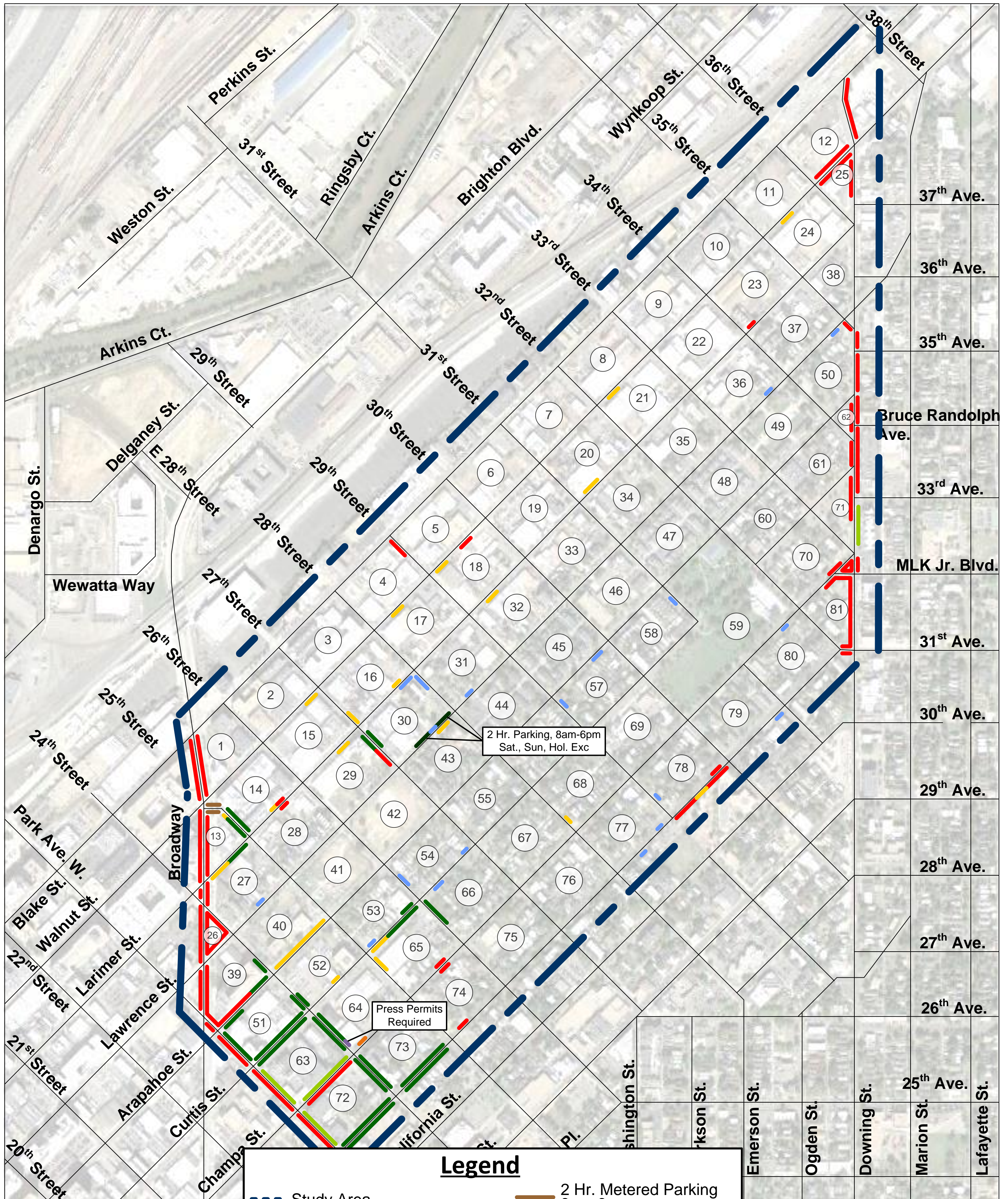


**Figure 1**  
Study Area



### Legend

- - - Study Area
- Permit Parking Only
- 1 Hr. Parking, 8am-6pm
- 2 Hr. Parking, 8am-6pm
- 2 Hr. Parking, 8am-6pm, Sat., Sun., Hol. Exc.
- 2 Hr. Metered Parking 8am-6pm
- Load Zone, Daytime
- Load Zone, All Times
- Handicap Parking
- No Parking
- (Blank) No Restrictions

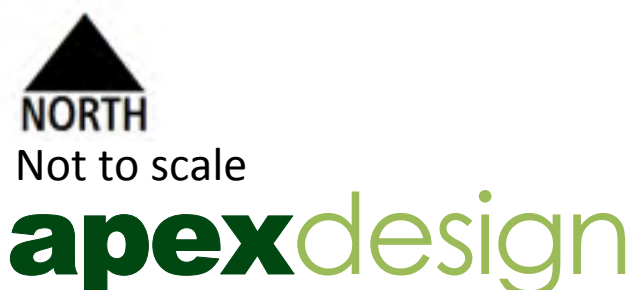
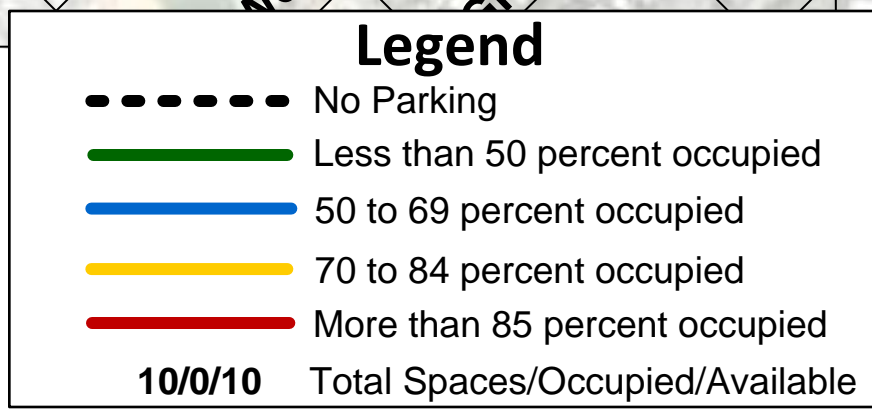
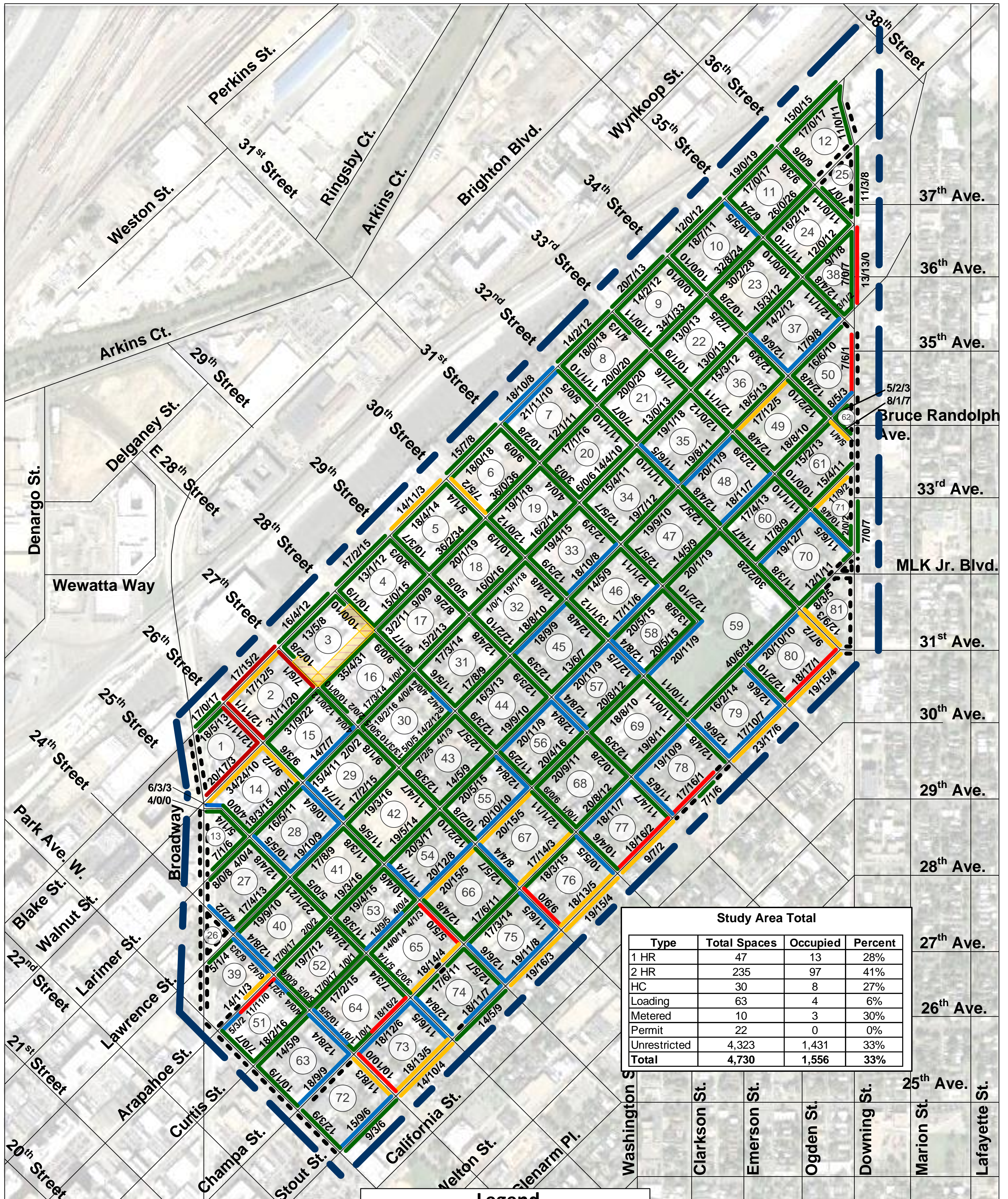
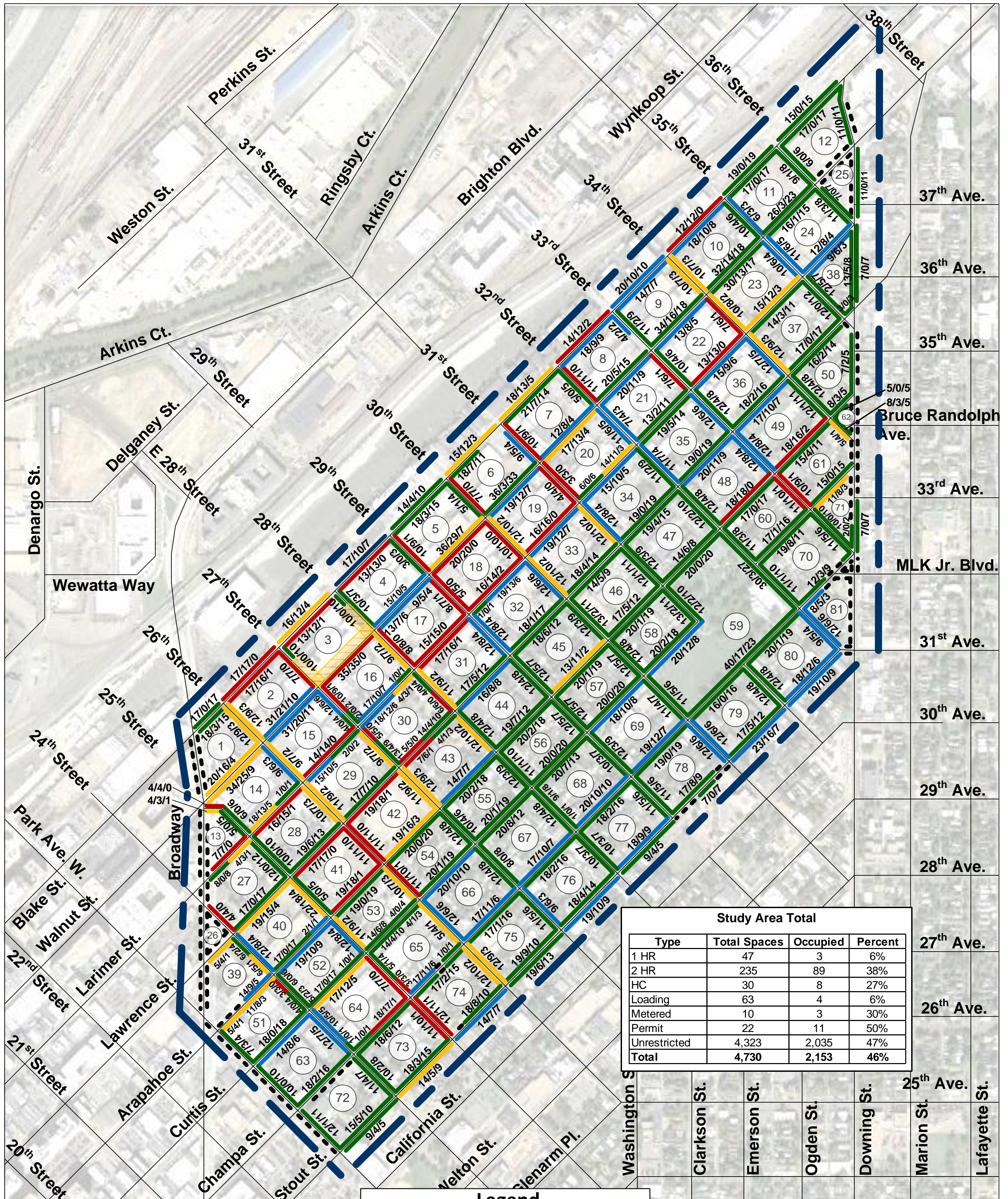


Figure 2  
Parking Restrictions



**Figure 3**  
 Parking Occupancy  
 5 AM Wednesday May 27, 2015



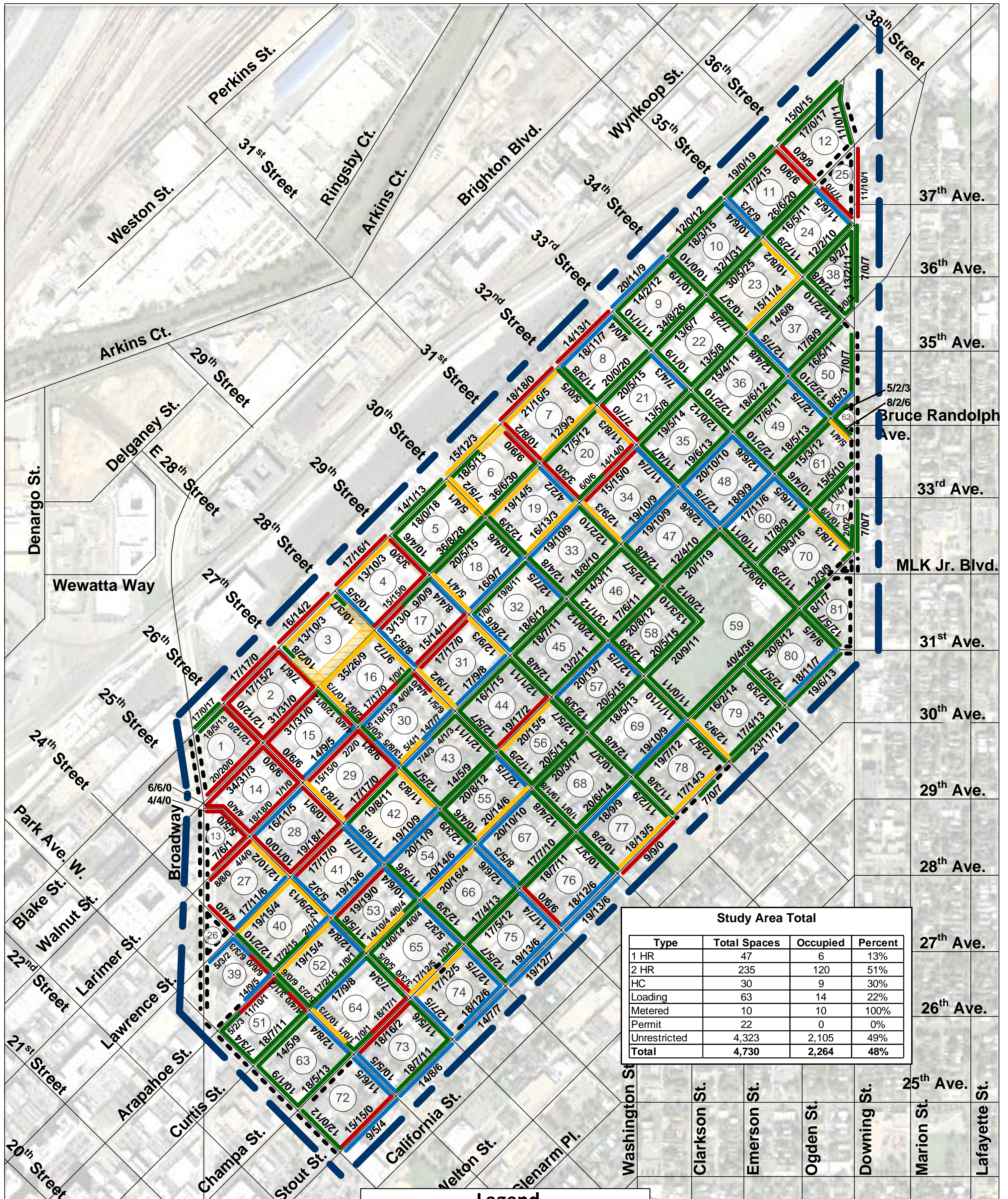
Study Area Total			
Type	Total Spaces	Occupied	Percent
1 HR	47	3	6%
2 HR	235	89	38%
HC	30	8	27%
Loading	63	4	6%
Metered	10	3	30%
Permit	22	11	50%
Unrestricted	4,323	2,035	47%
<b>Total</b>	<b>4,730</b>	<b>2,153</b>	<b>46%</b>

**Legend**

- No Parking
- Less than 50 percent occupied
- 50 to 69 percent occupied
- 70 to 84 percent occupied
- More than 85 percent occupied

**10/0/10** Total Spaces/Occupied/Available

**Figure 4**  
Parking Occupancy  
11 AM Wednesday May 27, 2015



**Legend**

- No Parking
- Less than 50 percent occupied
- 50 to 69 percent occupied
- 70 to 84 percent occupied
- More than 85 percent occupied
- 10/0/10 Total Spaces/Occupied/Available

**Figure 5**
  
 Parking Occupancy
   
 6 PM Friday June 5, 2015