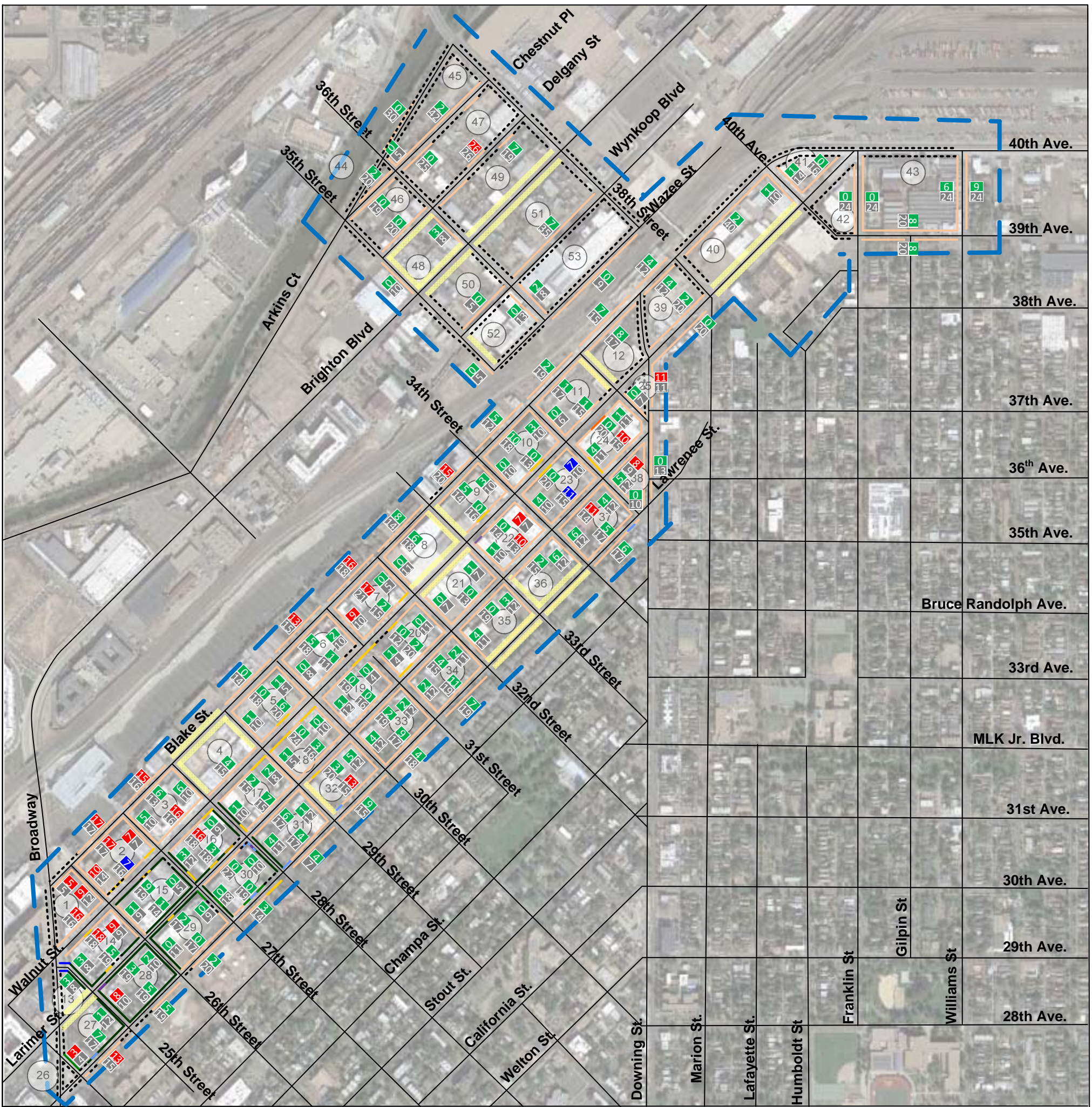


Legend	
	2 Hr. Parking, 8am-10pm, Sun. Hol. Exc.
	2 Hr. Metered Parking, 8am-6pm, Sun. Hol. Exc.
	2 Hr. Parking, 8am-6pm, Sun. Hol. Exc.
	Unrestricted
	Disability Parking
	Disability Parking, Sunday Only
	Disability Parking, Sat. and Sun. Only
	30 Min. Parking, 8am-10pm, Sun. Hol. Exc.
	15 Min. Loading Only All Times
	Loading Only All Times
	Loading Only, 7am-6pm, Sun. Hol. Exc.
	Passenger Loading All Times
	Passenger Loading Only, 5pm-2am
	No Parking, Trucks > 10,000 EVW
	No Parking

Study Area Summary	
2-Hour Parking (8am-10pm)	251
2-Hour Metered Parking (8am-6pm)	10
2-Hour Parking (8am-6pm)	4
Unrestricted	2,412
Disability Parking	14
Disability Parking, Sunday Only	4
Disability Parking, Sat and Sun Only	4
30 Min Parking (8am-10pm)	1
15 Min Loading Only All Times	1
Loading Only All Times	2
Loading Only (7am-6pm)	78
Passenger Loading All Times	4
Passenger Loading (5pm-2am)	4
No Parking, Trucks	30
Total Spaces	2,819

Figure 1
RiNo Parking Restrictions
November, 2017



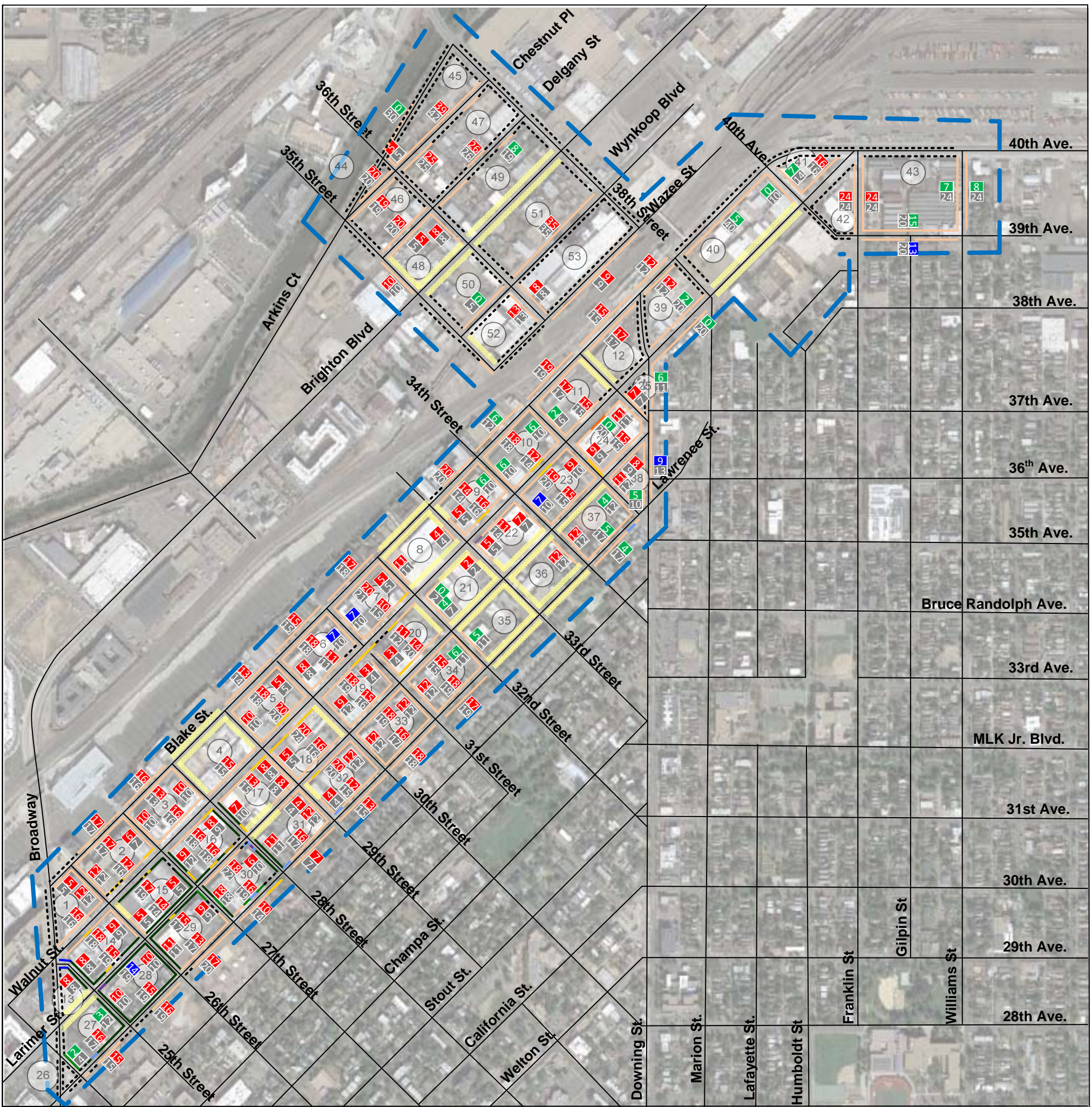
Legend

- 2 Hr. Parking, 8am-10pm, Sun. Hol. Exc.
- 2 Hr. Metered Parking, 8am-6pm, Sun. Hol. Exc.
- 2 Hr. Parking, 8am-6pm, Sun. Hol. Exc.
- Unrestricted
- Disability Parking
- Disability Parking, Sunday Only
- Disability Parking, Sat. and Sun. Only
- 30 Min. Parking, 8am-10pm, Sun. Hol. Exc.
- 15 Min. Loading Only All Times
- Loading Only All Times
- Loading Only, 7am-6pm, Sun. Hol. Exc.
- Passenger Loading All Times
- Passenger Loading Only, 5pm-2am
- No Parking, Trucks > 10,000 EVW
- No Parking
- Under Construction
- XX 0 - 65% Occupancy
- XX 66 - 74% Occupancy
- XX 75 - 100% Occupancy
- Total number of spaces

Study Area Summary

Occupied	749
Total	2,819
Percent Occupancy	27%

Figure 2
RiNo Parking Occupancy
5 AM Wednesday, November 1, 2017

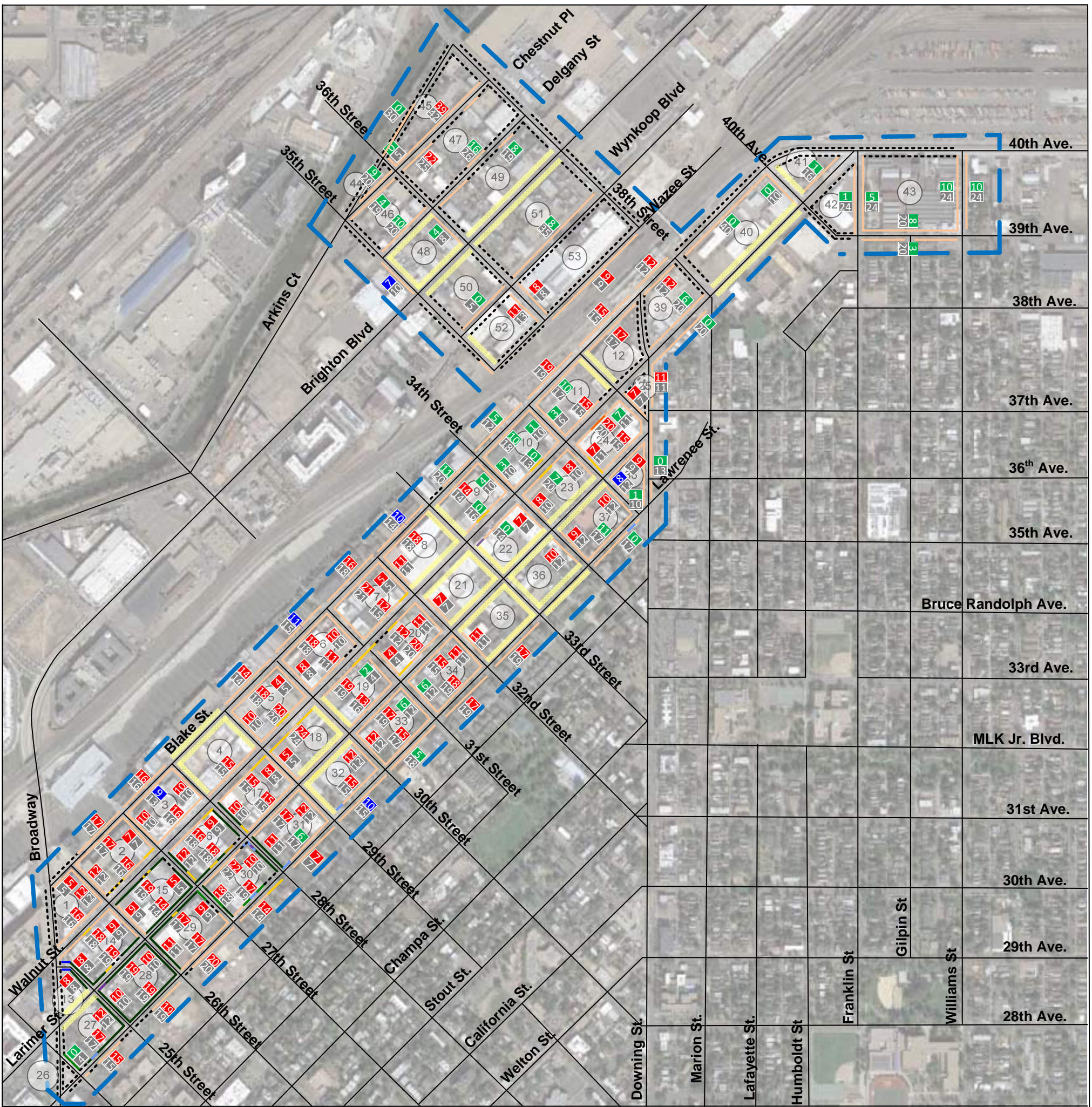


Legend

- 2 Hr. Parking, 8am-10pm, Sun. Hol. Exc.
- 2 Hr. Metered Parking, 8am-6pm, Sun. Hol. Exc.
- 2 Hr. Parking, 8am-6pm, Sun. Hol. Exc.
- Unrestricted
- Disability Parking
- - - Disability Parking, Sunday Only
- - - Disability Parking, Sat. and Sun. Only
- 30 Min. Parking, 8am-10pm, Sun. Hol. Exc.
- 15 Min. Loading Only All Times
- Loading Only All Times
- Loading Only, 7am-6pm, Sun. Hol. Exc.
- - - Passenger Loading All Times
- Passenger Loading Only, 5pm-2am
- - - No Parking, Trucks > 10,000 EVW
- - - No Parking
- Under Construction
- 0 - 65% Occupancy
- 66 - 74% Occupancy
- 75 - 100% Occupancy
- Total number of spaces

Study Area Summary	
Occupied	1,964
Total	2,819
Percent Occupancy	69%

Figure 3
RiNo Parking Occupancy
11 AM Wednesday, November 1, 2017



Legend

- 2 Hr. Parking, 8am-10pm, Sun. Hol. Exc.
- 2 Hr. Metered Parking, 8am-6pm, Sun. Hol. Exc.
- 2 Hr. Parking, 8am-6pm, Sun. Hol. Exc.
- Unrestricted
- Disability Parking
- Disability Parking, Sunday Only
- Disability Parking, Sat. and Sun. Only
- 30 Min. Parking, 8am-10pm, Sun. Hol. Exc.
- 15 Min. Loading Only All Times
- Loading Only All Times
- Loading Only, 7am-6pm, Sun. Hol. Exc.
- Passenger Loading All Times
- Passenger Loading Only, 5pm-2am
- No Parking, Trucks > 10,000 EVW
- No Parking
- Under Construction
- XX 0 – 65% Occupancy
- XX 66 - 74% Occupancy
- XX 75 - 100% Occupancy
- Total number of spaces

Study Area Summary	
Occupied	1,755
Total	2,819
Percent Occupancy	62%

Figure 4
RiNo Parking Occupancy
7 PM Friday, October 27, 2017