

**Legend**

- No Parking
- Less than 65 percent occupied
- 65 to 74 percent occupied
- More than 75 percent occupied
- 10/0/10 Total Spaces/Total Occupied/Total Available
- Spaces Unavailable due to Construction

**Study Area Summary**

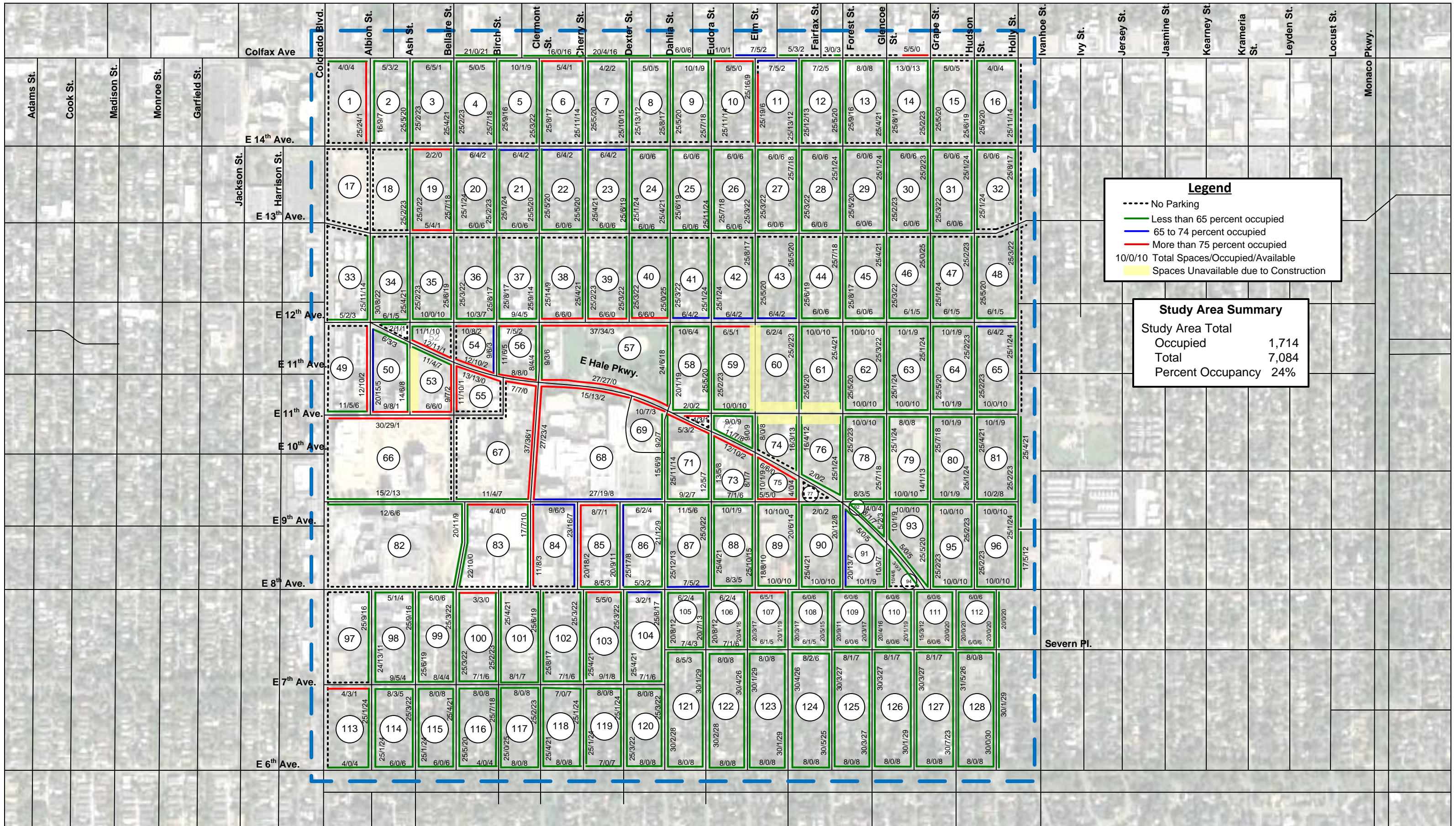
Study Area Total	
Occupied	1,846
Total	7,084
Percent Occupancy	26%

**Figure 2**

**Hale Parking Occupancy**

5 AM, Wednesday January 4, 2017 for area East of Elm St.

5 AM, Wednesday April 30, 2014 for area West of Elm St.



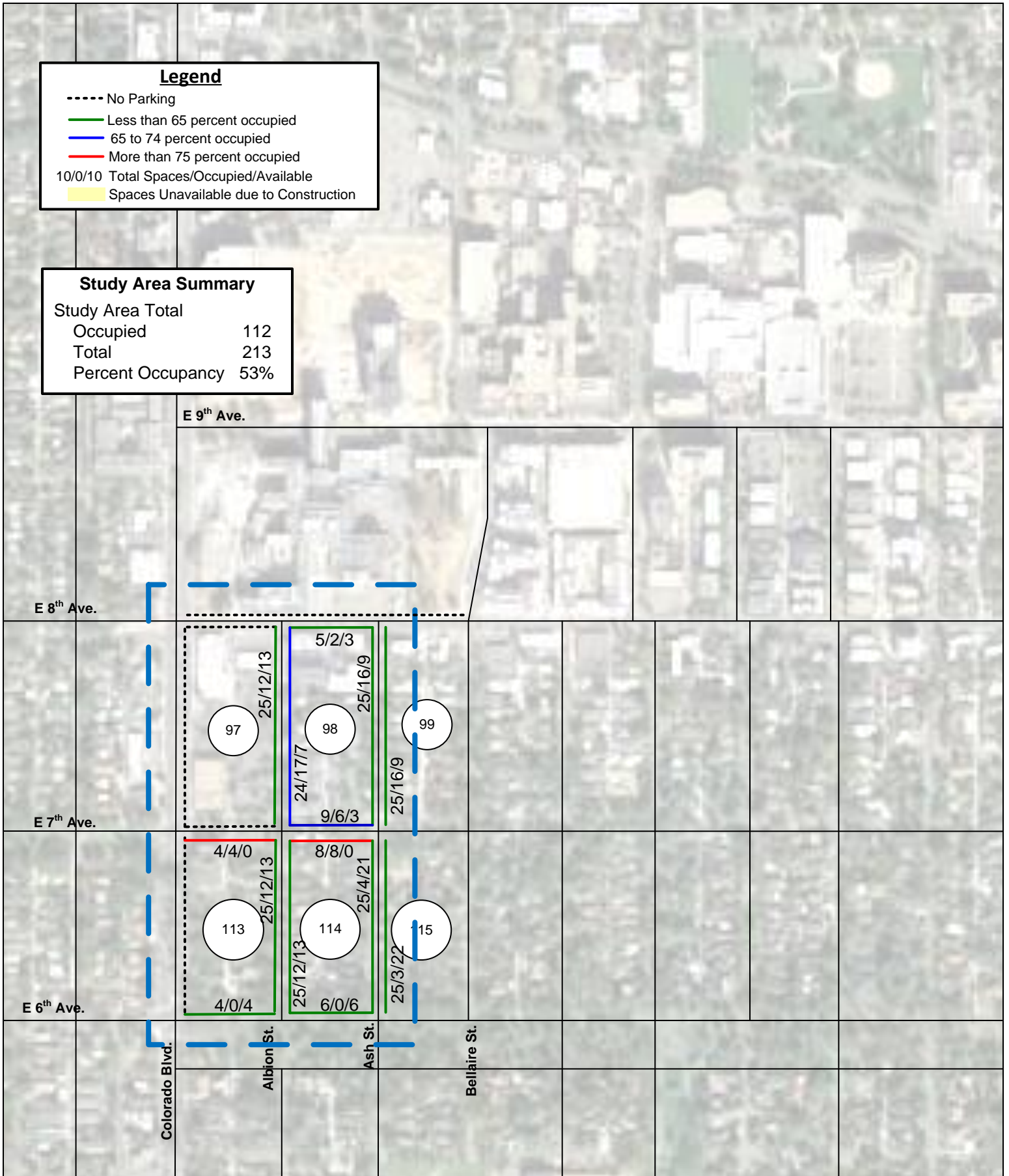
**Figure 3**  
**Hale Parking Occupancy**  
 1 PM, Tuesday January 10, 2017

**Legend**

- No Parking
- Less than 65 percent occupied
- 65 to 74 percent occupied
- More than 75 percent occupied
- 10/0/10 Total Spaces/Occupied/Available
- Spaces Unavailable due to Construction

**Study Area Summary**

Study Area Total	
Occupied	112
Total	213
Percent Occupancy	53%



**Figure 4**

**Hale Parking Occupancy  
9 AM, Saturday January 15, 2017**