

**Legend**

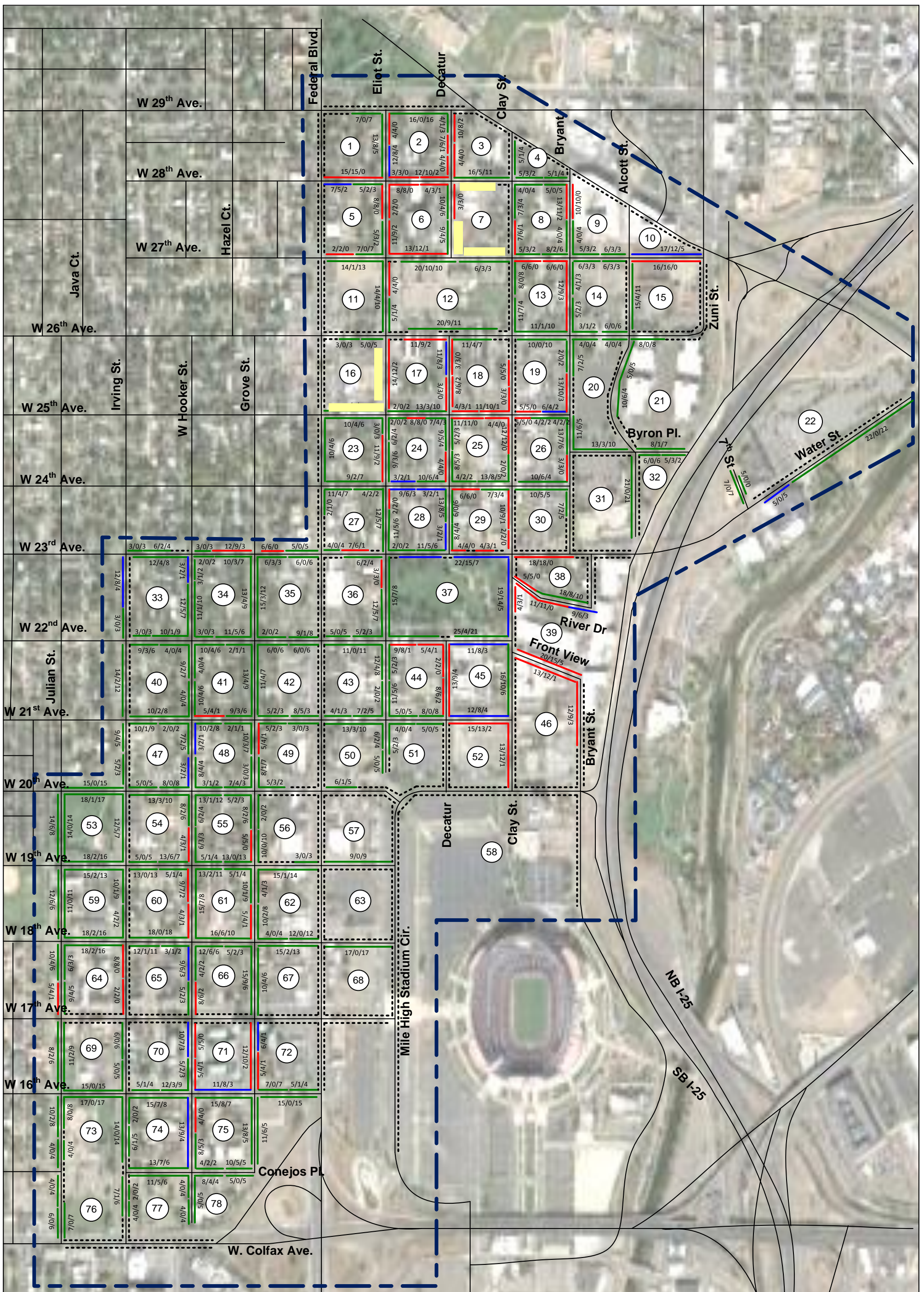
- Unrestricted Parking
- 2 Hr. Parking 8am-10pm, Hol. Exc.
- 2 Hr. Parking 8am-6pm, Hol. Exc.
- 1 Hr. Parking 8am-6pm, Sun. Hol. Exc.
- 2 Hr. Parking 5am-11pm, Sun. Hol. Exc.
- Metered Parking, 8am-8pm, Sun. Hol. Exc.
- Metered Parking, 8am-10pm, Hol. Exc.
- - - - No Parking
- School Parking 7am-5pm, Sat. Sun. Hol. Exc.
- Disability Parking
- Loading Zone 7am-6pm, Sun. Hol. Exc.
- Loading Zone 7am-6pm, Sat. Sun. Hol. Exc.
- No Parking During Stadium Events
- RPP Zone A (Inner)
- 6PM-9PM Mon-Fri
- Noon-9PM Sat-Sun
- RPP Zone A (Outer)
- Noon-9PM Sat-Sun

**Study Area Summary**

1-Hour Parking (8am-6pm)	6
Metered (8am-10pm)	11
Disability Parking	20
Metered (8am-8pm)	22
Loading Zone	23
School Only (7am-5pm)	28
2-Hour Parking (8am-6pm)	33
2-Hour Parking (5am-11pm)	40
No Parking Stadium Events	58
2-Hour Parking (8am-10pm)	78
Unrestricted	987
Residential Parking Permit	1,800
<b>Total Spaces</b>	<b>3,106</b>

**Figure 1**  
Jefferson Park Parking Restrictions





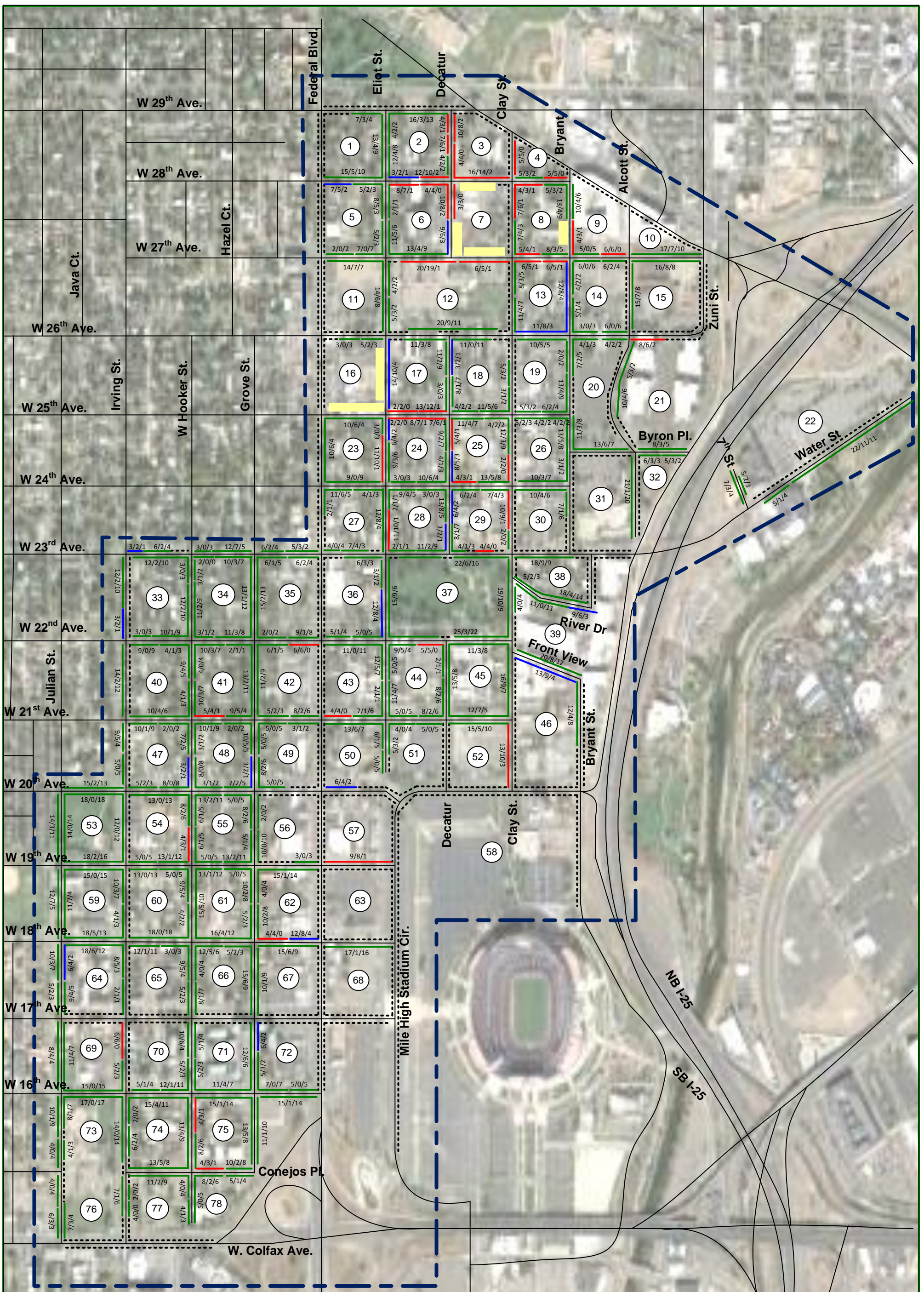
Study Area Summary	
Study Area Total	
Occupied	1,276
Total	3,106
Percent Occupancy	41%

Legend	
-----	No Parking
—	Less than 65 percent occupied
—	65 to 74 percent occupied
—	75 percent occupied or greater
10/0/10	Total Spaces/Occupied/Available
■	Block face under construction



**Figure 2**  
**Jefferson Park Parking Occupancy**  
 5 AM Friday, July 8, 2016





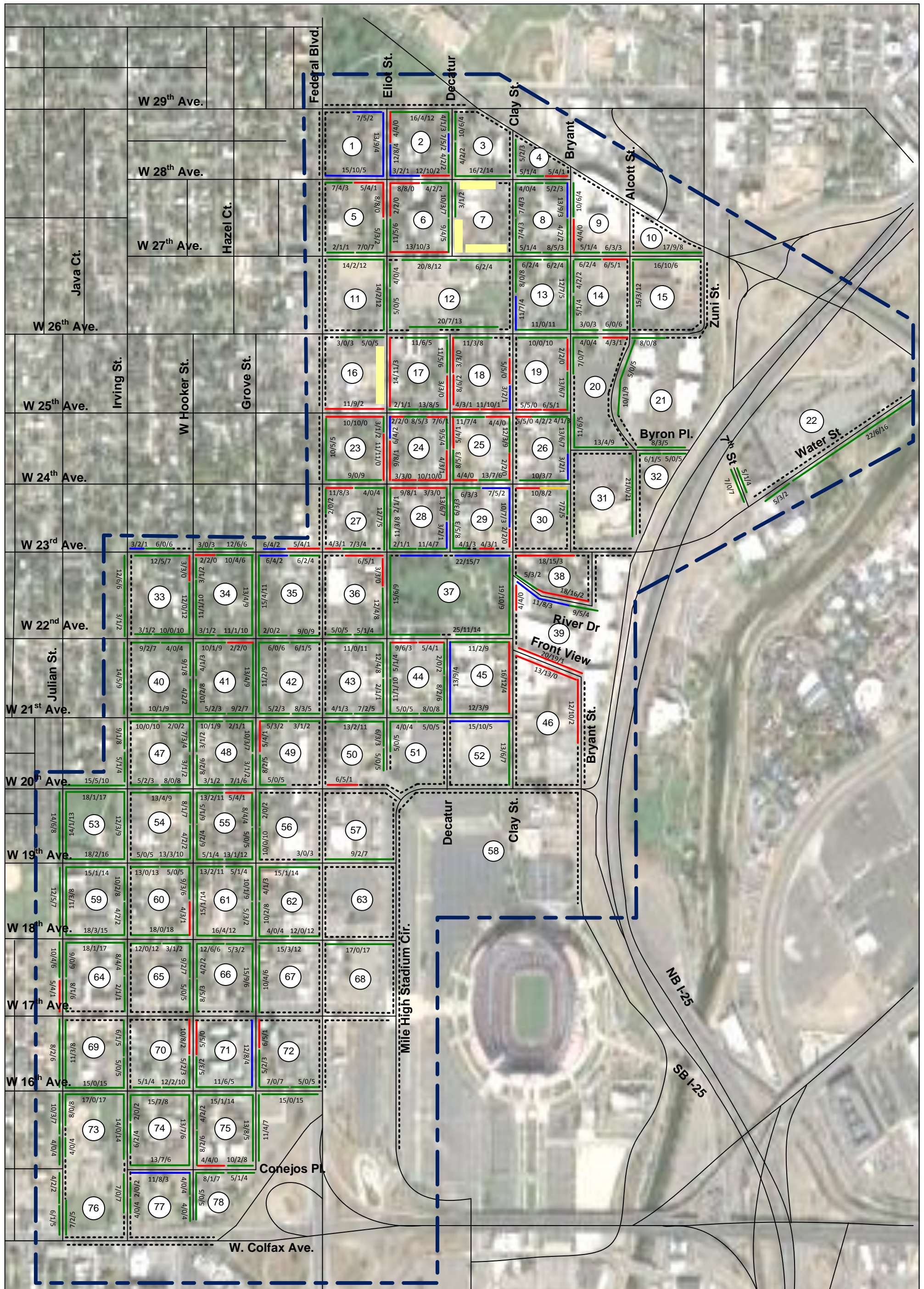
Study Area Summary	
Study Area Total	
Occupied	1,090
Total	3,106
Percent Occupancy	35%

Legend	
-----	No Parking
—	Less than 65 percent occupied
—	65 to 74 percent occupied
—	75 percent occupied or greater
10/0/10	Total Spaces/Occupied/Available
■	Block face under construction



**Figure 3**  
**Jefferson Park Parking Occupancy**  
 11 AM Wednesday, July 13, 2016





Study Area Summary	
Study Area Total	
Occupied	1,167
Total	3,106
Percent Occupancy	38%

Legend	
-----	No Parking
—	Less than 65 percent occupied
—	65 to 74 percent occupied
—	75 percent occupied or greater
10/0/10	Total Spaces/Occupied/Available
■	Block face under construction



**Figure 4**  
**Jefferson Park Parking Occupancy**  
 6 PM Tuesday, July 26, 2016



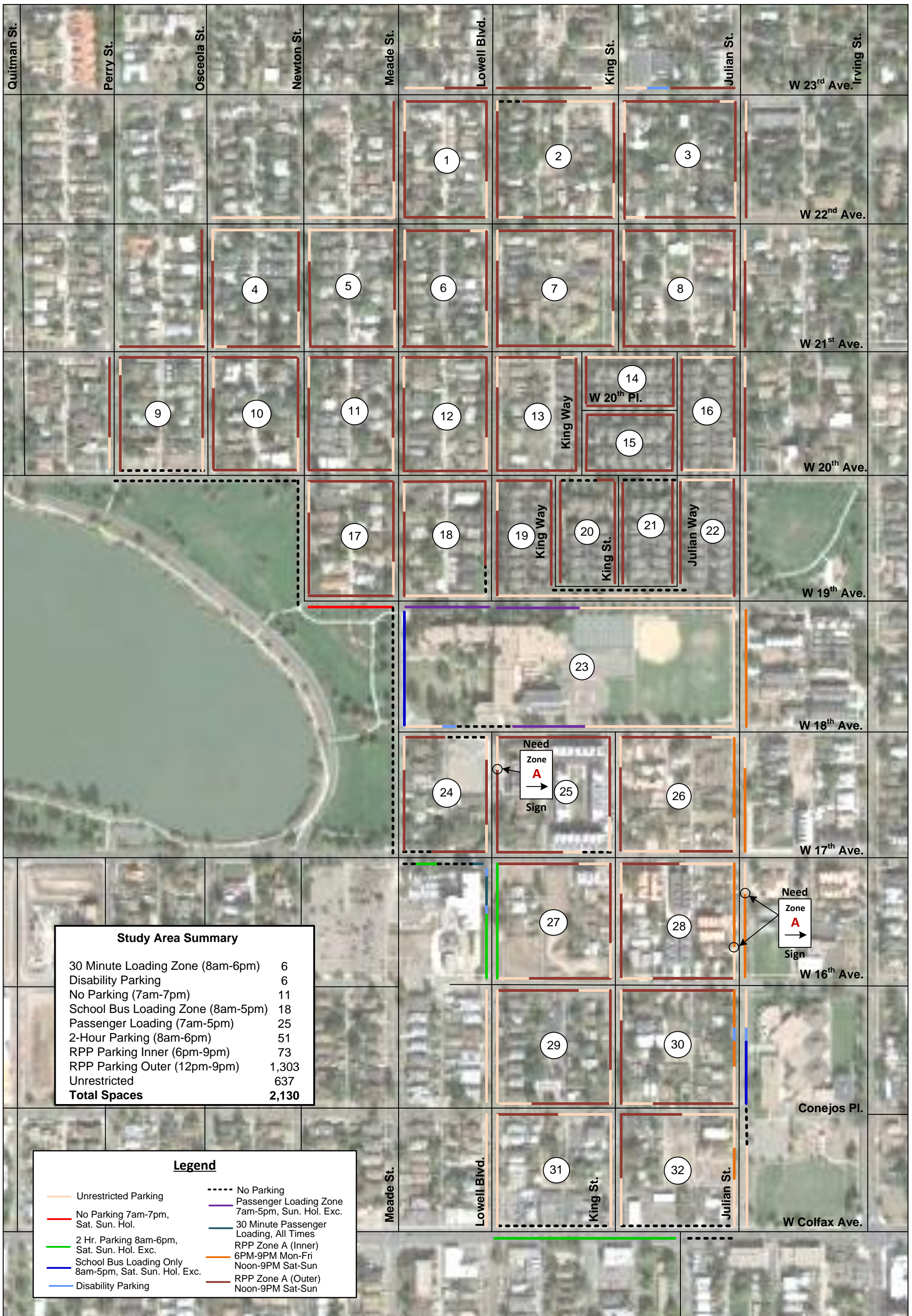
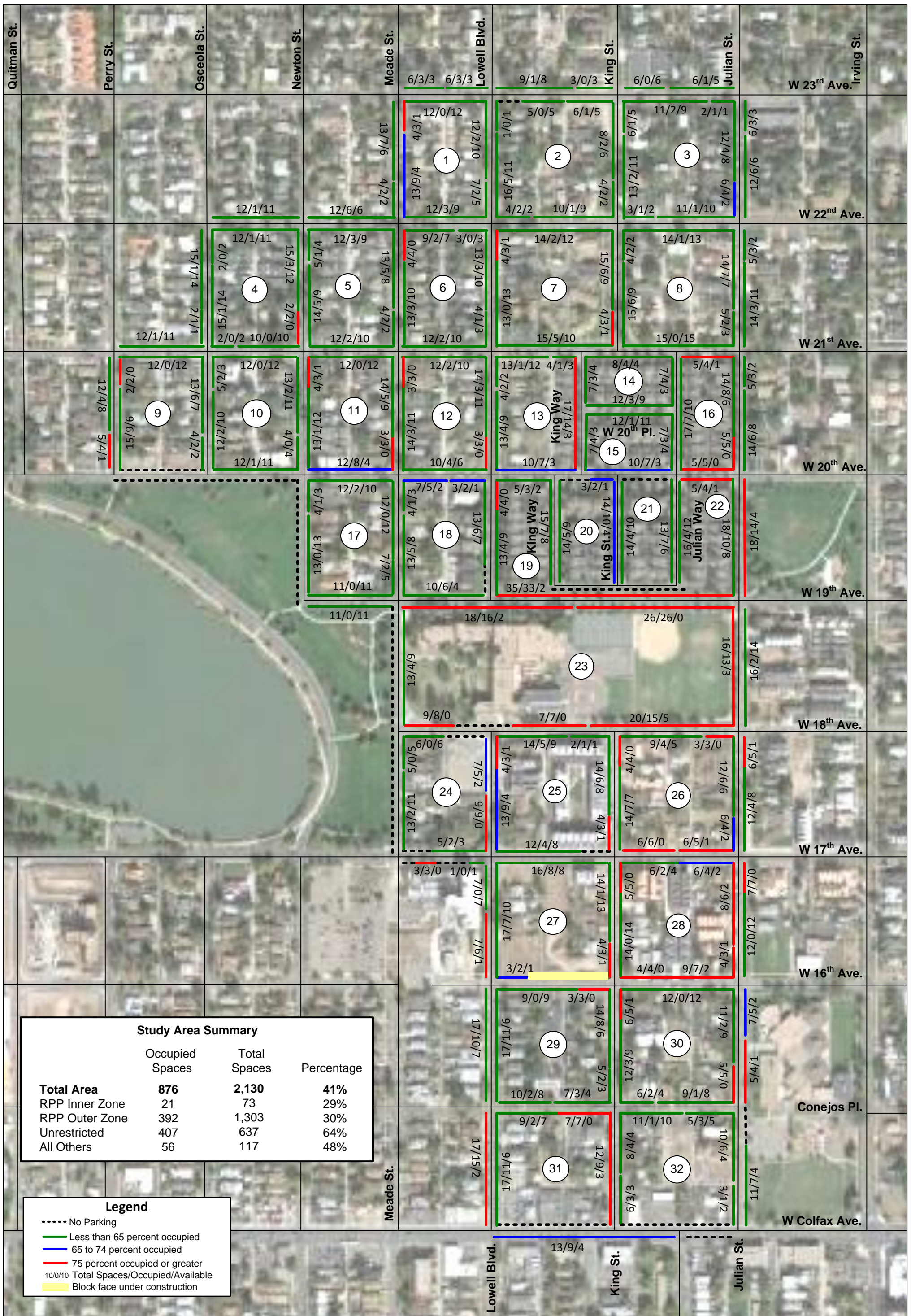


Figure 1  
West Jefferson Park  
Parking Restrictions



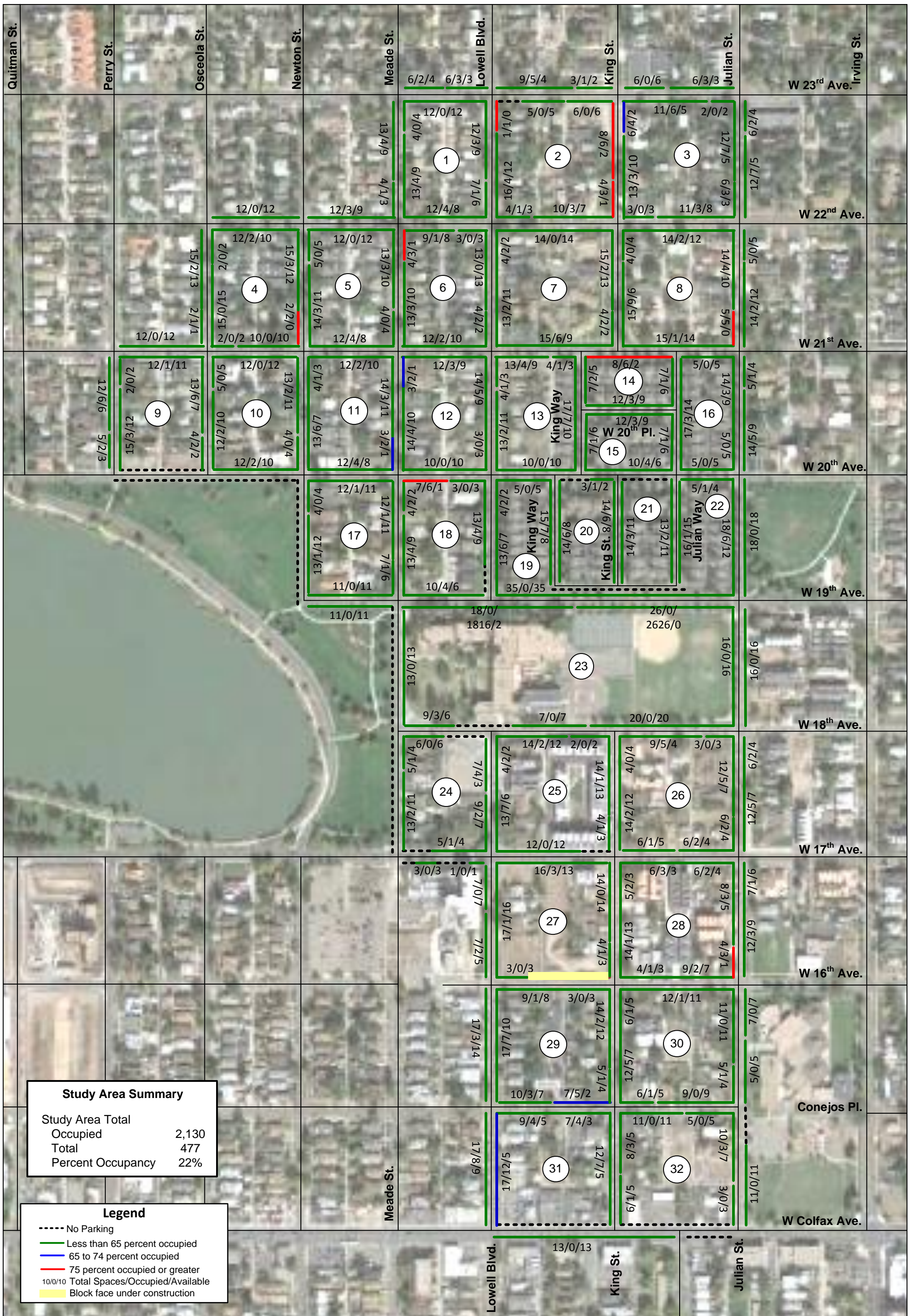


Study Area Summary			
	Occupied Spaces	Total Spaces	Percentage
<b>Total Area</b>	<b>876</b>	<b>2,130</b>	<b>41%</b>
RPP Inner Zone	21	73	29%
RPP Outer Zone	392	1,303	30%
Unrestricted	407	637	64%
All Others	56	117	48%

Legend	
-----	No Parking
-----	Less than 65 percent occupied
-----	65 to 74 percent occupied
-----	75 percent occupied or greater
10/0/10	Total Spaces/Occupied/Available
-----	Block face under construction

**Figure 2**  
**West Jefferson Park**  
**Parking Occupancy**  
**7 PM Thursday, September 8, 2016**  
**During Denver Broncos Game**





Study Area Summary	
Study Area Total	2,130
Occupied	477
Total	477
Percent Occupancy	22%

Legend	
-----	No Parking
-----	Less than 65 percent occupied
-----	65 to 74 percent occupied
-----	75 percent occupied or greater
10/0/10	Total Spaces/Occupied/Available
-----	Block face under construction

**Figure 3**  
**West Jefferson Park**  
**Parking Occupancy**  
**5 AM Friday, September 23, 2016**