

LEGEND

Off-Street Parking Occupancy			
Lot	Capacity	Occupied	Percent
A	2	1	50%
B	8	3	38%
C	29	3	10%
D	23	0	0%
E	10	3	30%
F	40	2	5%
G	71	0	0%
H	2	2	100%
I	6	6	100%
J	22	3	14%
K	28	5	18%
Total	244	28	11%

■ = <50% occupied
■ = 50-85% occupied
■ = >85% occupied

On-Street Parking Occupancy	
■ ■ ■	= On-Street Parking
XX/YY/ZZ	= Capacity / Parking Occupied / Parking Open

SPACES	OCCUPIED	PERCENT
742	333	45%

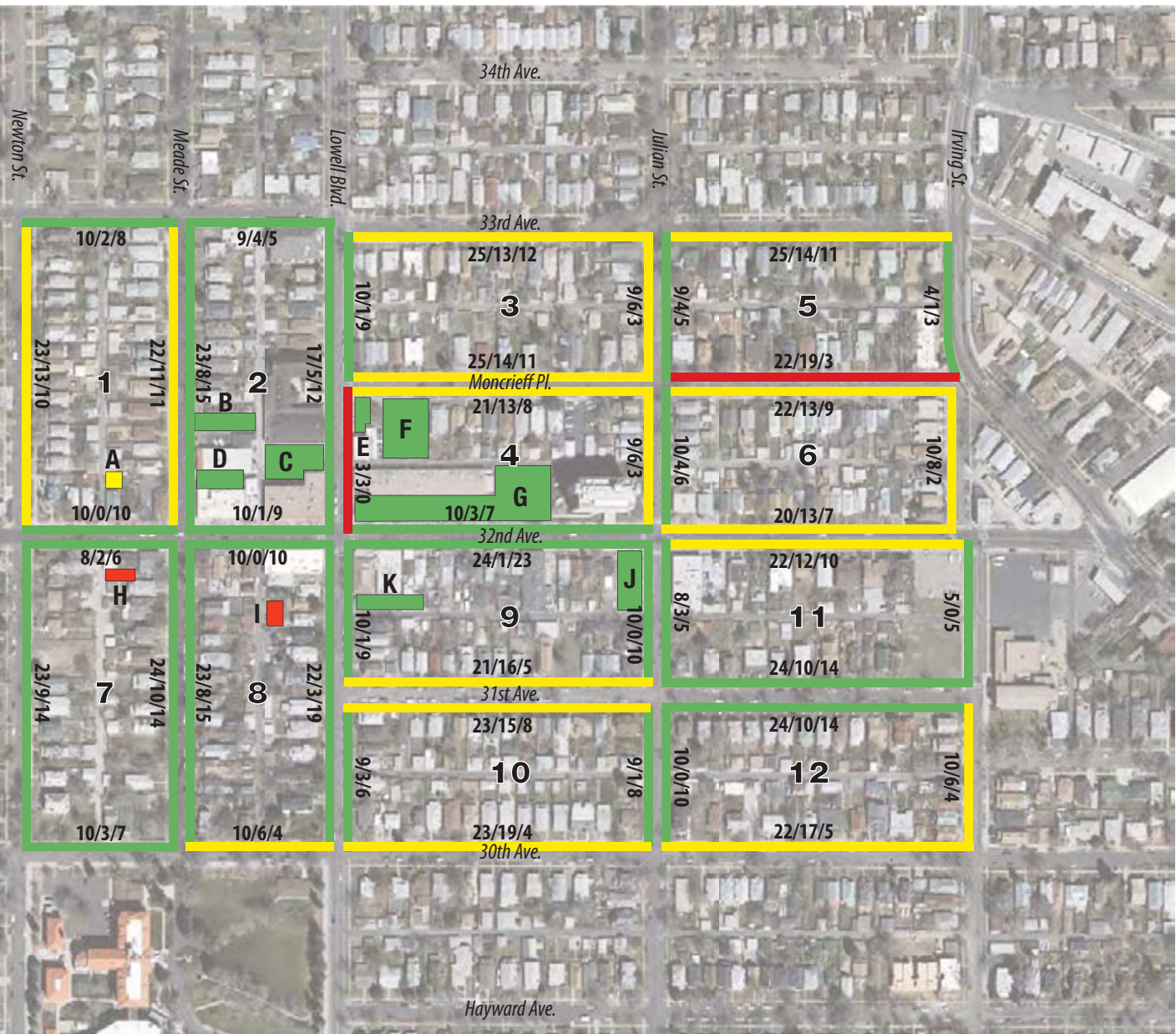


Figure 1
32nd Ave. / Lowell Blvd. Neighborhood Center - 5AM Parking Summary

LEGEND

Off-Street Parking Occupancy			
Lot	Capacity	Occupied	Percent
A	2	3	150%
B	8	4	50%
C	29	6	21%
D	23	6	26%
E	10	8	80%
F	40	2	5%
G	71	49	69%
H	2	1	50%
I	6	9	150%
J	22	8	36%
K	28	10	36%
Total	244	107	44%

■ = <50% occupied
■ = 50-85% occupied
■ = >85% occupied

On-Street Parking Occupancy	
■ ■ ■	= On-Street Parking
XX/YY/ZZ	= Capacity / Parking Occupied / Parking Open

SPACES	OCCUPIED	PERCENT
742	404	54%

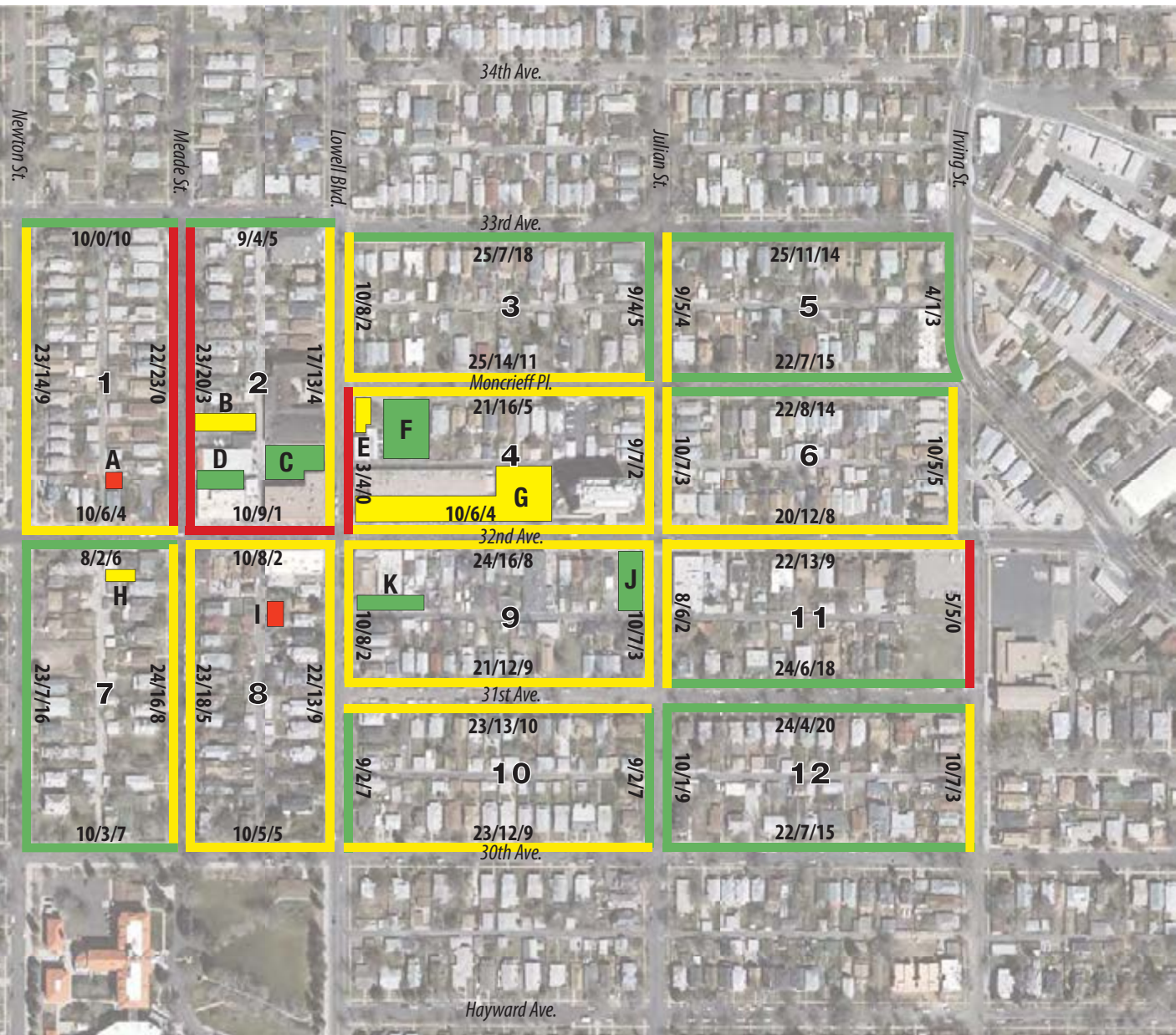
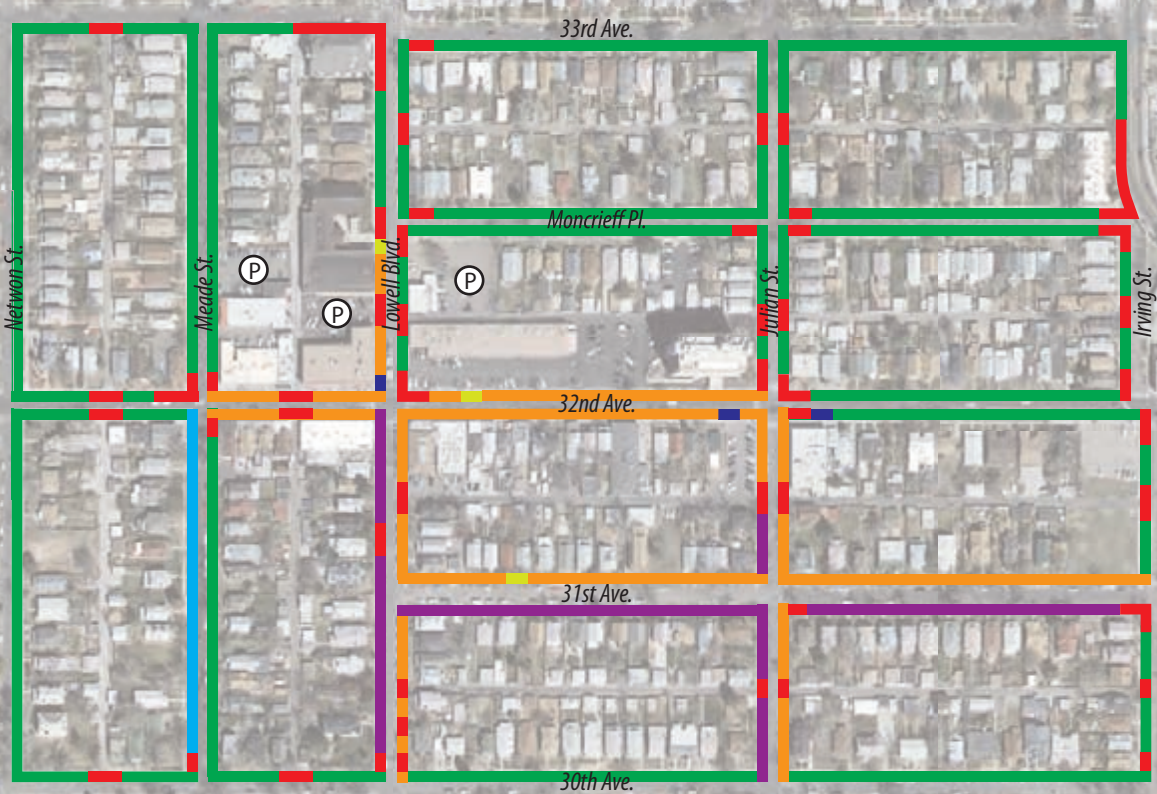










Figure 2
32nd Ave. / Lowell Blvd. Neighborhood Center - Noon Parking Summary



Highlands Square Parking Options (as of June 2012) - subject to change

- | | | | |
|---|---|---|-----------------------|
|  | = 2 Hour Parking |  | = No Parking |
|  | = 2 Hour 8AM-6PM, Residential Permit 6PM-12AM |  | = Handicapped Parking |
|  | = Residential Permit 5PM - 10PM |  | = Loading Zone |
|  | = Unrestricted Parking |  | = Public Paid Parking |

Map Generated 6/9/12. The City & County of Denver shall not be liable for damages of any kind arising out of the use of this information. The information is provided "as is" without warranty of any kind, express or implied, including, but not limited to, the fitness for a particular use. This is not a legal document.

LEGEND

Off-Street Parking Occupancy			
Lot	Capacity	Occupied	Percent
A	2	1	50%
B	8	10	125%
C	29	8	28%
D	23	2	9%
E	10	9	90%
F	40	24	60%
G	71	66	93%
H	2	2	100%
I	6	5	83%
J	22	0	0%
K	28	24	86%
Total	244	151	62%

■ = <50% occupied
■ = 50-85% occupied
■ = >85% occupied

On-Street Parking Occupancy	
■ ■ ■	= On-Street Parking
XX/YY/ZZ	= Capacity / Parking Occupied / Parking Open

SPACES	OCCUPIED	PERCENT
742	562	76%

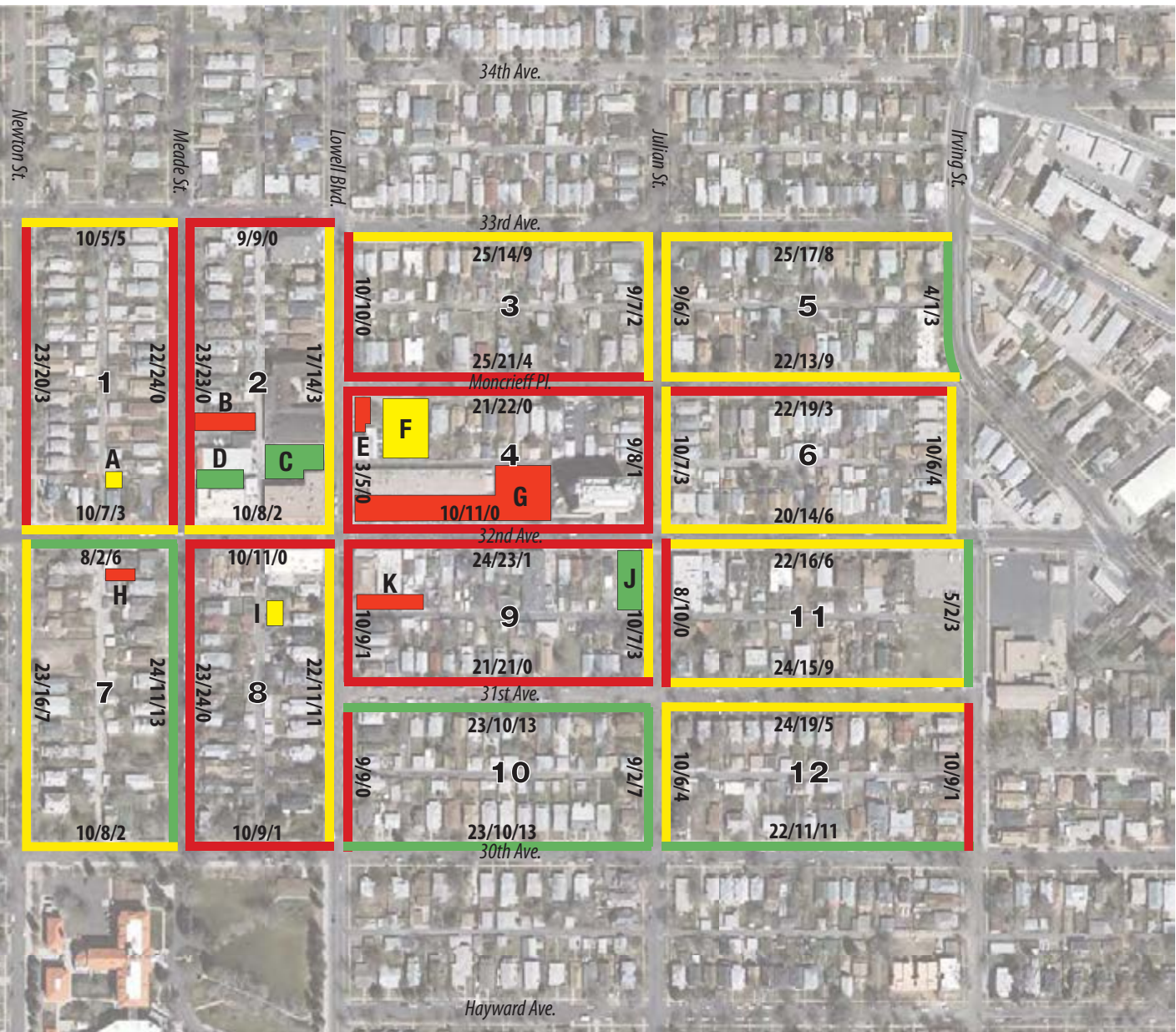


Figure 3
32nd Ave. / Lowell Blvd. Neighborhood Center - Friday Evening Parking Summary