



Michael B. Hancock
Mayor

CITY AND COUNTY OF DENVER

DEPARTMENT OF PUBLIC WORKS

WASTEWATER MANAGEMENT DIVISION
QUALITY CONTROL SECTION
2000 WEST THIRD AVENUE
DENVER, COLORADO 80223
PHONE: (303) 446-3400

“Preserve & Protect the City’s Natural Waterways” Event & Vendor Booth Setup Checklist

- _____ Carpet scraps/remnants are to be placed underneath areas within the booth involving oil/grease producing equipment and/or operations and the dispensing of syrups and condiments either by the vendor, the customer or both.
- _____ Individual containers for cooking oil/grease waste and waste “gray” water generated by food vending operations is required.
- _____ Kitty litter or any other absorbent material shall be available on hand in response to spills.
- _____ 5-gallon containers/buckets are to be placed no more than 24 inches below the tap at vendor booths serving beverages that do not have drains into an enclosed container.
- _____ Large volumes of excess ice melt or potable water are not allowed to be discharged into the curb and gutter leading to storm drain inlets. At most events, excess ice melt coming into contact with electrical cables/wires in the curb and gutter poses a serious public safety hazard. Standing water in catch basin/inlet may become an odor issue when mixed with other contaminants.
- _____ Absorbent pillows/booms shall be made available at vendor sites with amusement rides that are operated by hydraulic equipment to temporarily contain any potential releases. Either proper personnel training or a contracted licensed cleanup company to immediately respond and mitigate a potential release will be required to operate the booth.

CITY AND COUNTY OF DENVER STORM SEWER PROTECTION REGULATIONS SPECIAL EVENTS

Chapter 7.01 Quality Control-Prohibited Discharges to the Storm Sewer System.

- (a) No person shall cause, permit, or contribute to the discharge of any polluted water, waste or materials into the City’s storm sewers or into water courses that traverse the City.
- (e) No person shall cause, permit, or contribute to the discharge of any waters directly into a manhole or other opening in a storm sewer unless he has been issued a permit by the City. If a permit is issued for such discharge, the user shall pay the applicable charges and fees and shall meet such other conditions as required by the City.

Any one of the following Notice of Violations may be issued for non-compliance:

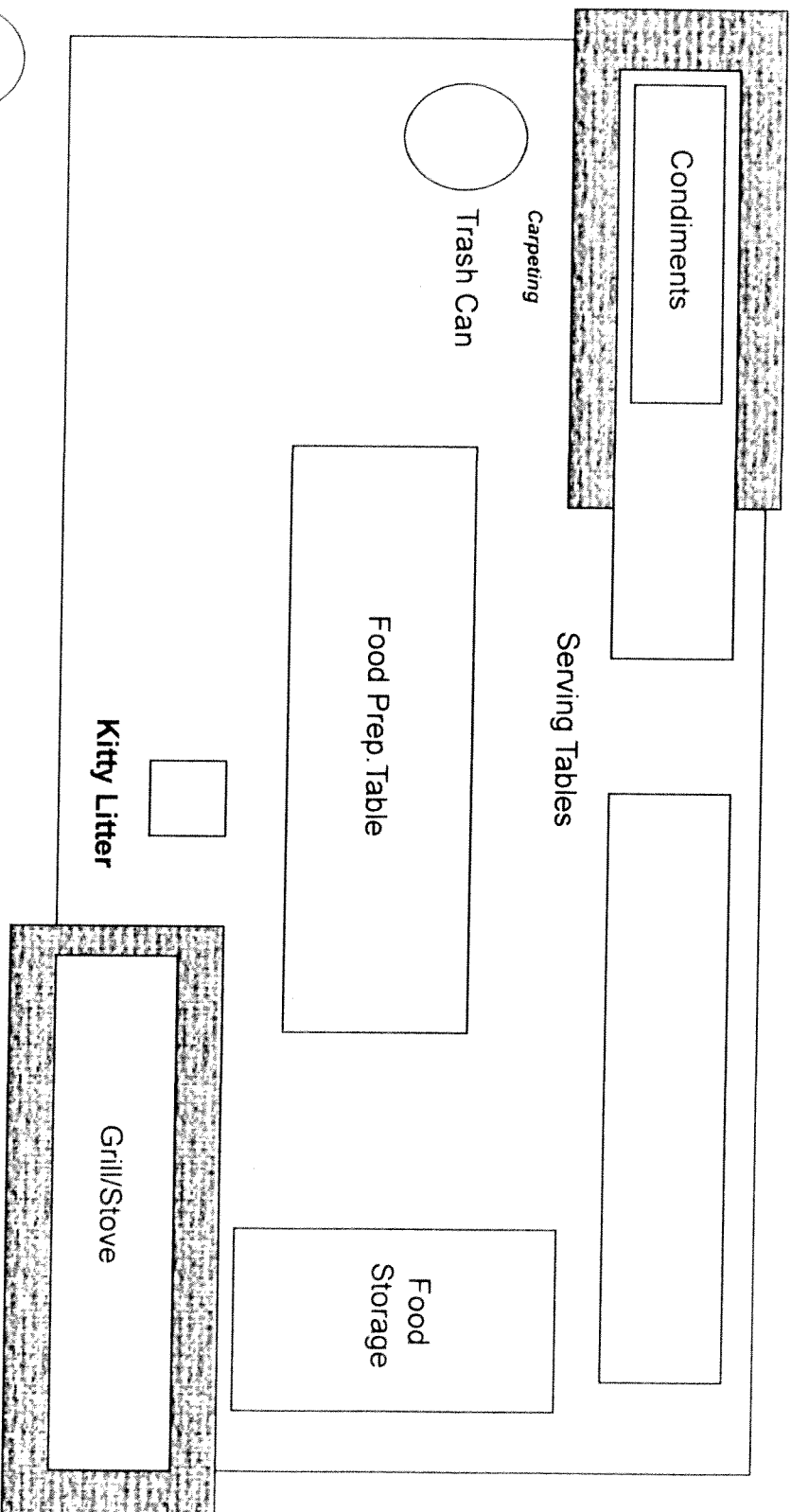
*Verbal Warning or,
Written Warning or,
General Summons to appear in court with maximum fines up to \$999 per violation, partial or entire relinquishment of the special events deposit, closure of booth during event, and/or all three*

For questions pertaining to Wastewater Management, please contact a Water Quality Investigator in the Quality Control (QC) Section at (303) 446-3400.

VENDOR BOOTH SETUP EXHIBIT (OVER →)

Exhibit: Vendor Booth Setup

Customers



Restricted Public Access-Vendor Personnel Only

Waste "Gray" Water Barrel

NOTE: This exhibit is to be used for demonstration purposes only. Vendor shall follow the booth setup guidelines as instructed by the event coordinator. The exhibit illustrates a footprint of a hypothetical booth area-NOT tent coverage

Oil/Grease Barrel