

Regional Project Applications – Process & Candidate List

Subregional Forum Technical Subcommittee
July 12, 2018

Outcome #1: Advance 3 Denver Regional Project Applications

- Denver staff will maintain coordination with regional partners: CDOT, RTD and neighboring SRFs to identify shared priorities and develop projects that could be competitive in the Regional competition. Consideration will be given to prior commitments to support shared priorities
- Those projects which best fit the City's priorities, can support the match requirements AND are expected to be most competitive given the criteria would be recommended to submit applications for

Regional Share

Approximately \$21 million available for the 8 subregions, CDOT and RTD to apply for

Denver Subregion may submit up to 3 Regional Share Applications

<u>Sponsor</u>	<u>Qty</u>	<u>Total</u>
8 Subregions	3	24
CDOT	2	2 (1 after Central 70)
RTD	2	2
		Total = 28

How are Regional Applications Valued?

Regional Significance of Project – 40%

Metro Vision TIP Focus Areas – 30%

Transportation Focused Metro Vision Objectives – 20%

Leverage of Non-Regional Funds – 10%

Regional Significance of Project – 40% (5.71 points each)

- Why is the project regionally significant?
- Crosses and/or benefits multiple municipalities?
- Crosses and benefits another subregion?
- How addresses specific Metro-Vision related regional problem?
- How the completed project allow people and businesses to thrive & prosper?
- How will connectivity to different travel modes be improved by the proposed project?
- Strength of funding and/or project partnerships established in association with project?

Metro Vision TIP Focus Areas – 30% (10 points each)

- How will the project improve mobility infrastructure and services for vulnerable population (incl improved access to health services)?
- How will the project increase the reliability of existing multimodal transportation network?
- How will the project improve transportation safety & security?

Transportation Focused Metro Vision Objectives – 20% (2.5 points each)

- How will project contain urban development in locations designated for urban growth & services?
- How will project help increase housing & employment in urban centers?
- How will project help improve or expand the region's multimodal transportation system, services & connections?
- How will the project improve air quality & reduce GHG emissions?
- How will the project help connect people to natural resource or recreational areas?
- How will the project help increase access to amenities that support healthy, active choices?
- How will the project improve access to opportunity?
- How will the project improve the region's competitive position?

Leverage of Non-Regional Funds – 10%

HIGH: 80% Outside funding

MEDIUM: 60-79% Outside funding

LOW: 59% & below

Other Considerations

Is this project already or likely to be federalized?

-Adding cost, risk & schedule

Is there already significant investment in this project?

Project Readiness

Are we are seeking gap funding? 'Last money in'

Diversity in project type, and size of asks

Multi-Departmental Team Project List

I-25 / Alameda - CDOT Central 70 IGA
16th street mall
I-25/ Broadway
Pena & 56th Ave Intersection
Overland Ped Bridge
Colfax BRT
Federal Blvd Corridor / Transit Design (STUDY)
Sheridan Sidewalks
Hampden Corridor Multimodal Improvements
S. Platte Greenway / Cherry Creek Trail: Confluence Bridge Upgrades
Sand Creek Regional Trail - Quebec Connection
52nd Avenue
Pena Blvd capacity

First Screen Projects

52nd Avenue Connection & Railroad Underpass –
Ineligible for DRCOG Regional or Subregional funding

Pena Blvd Capacity – per DIA will not pursue for TIP
funding in this cycle

Other Projects

- Colfax BRT – Project Readiness & other funding opportunities (CIG)
- Federal Blvd Corridor Design – Requires additional development
- Sheridan Sidewalks – Eligible but not regionally competitive
- Hampden Corridor Multimodal Improvements – Bond funding and questions to federalize
- Confluence Bridge Upgrades & Sand Creek Regional Trail – May be less competitive regionally and hold better potential for Multimodal Options Funding from CDOT

CDOT Project – I-25 & Alameda/Santa Fe

16th Street Mall Reconstruction



Eligible for Regional Funding as Rapid Transit FCRTTP (Busway)

Already federalized project – FTA grant

Significant match available to score high on leverage criteria

Regional destination and scores well in regional significance of project

NEPA in Process

Broadway Station Multimodal Access & Safety



Eligible as Freeway and Transit Station Access

Hub location for rail, bus & freeway access from multiple subregions

Already federalized project – Next Phase of TIP Project

Environmental Assessment completed, Supplemental EA in process

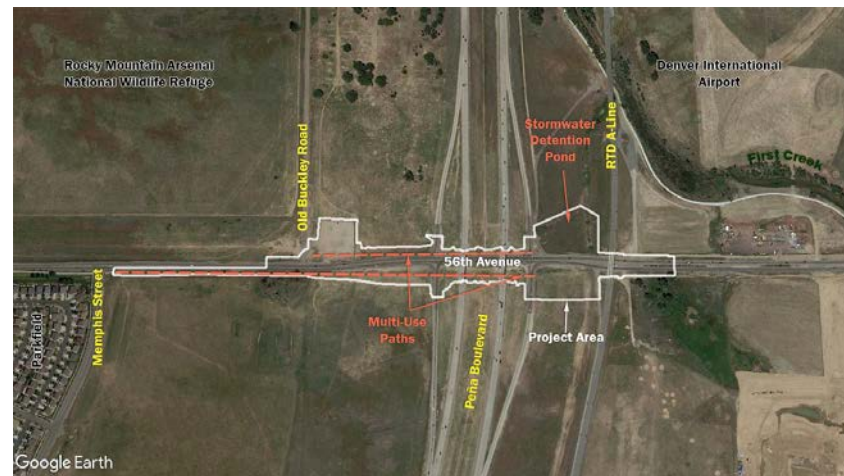
56th and Pena Operational Improvements

Eligible as Roadway Operational Project at Freeway Interchange

Already federalized project –seeking construction gap funding to complete

Benefits to Denver, Adams County, incl Aurora & Commerce City and access to Intermodal Facility (DIA)

Design & Environmental Assessment in process



Overland Park Bridge



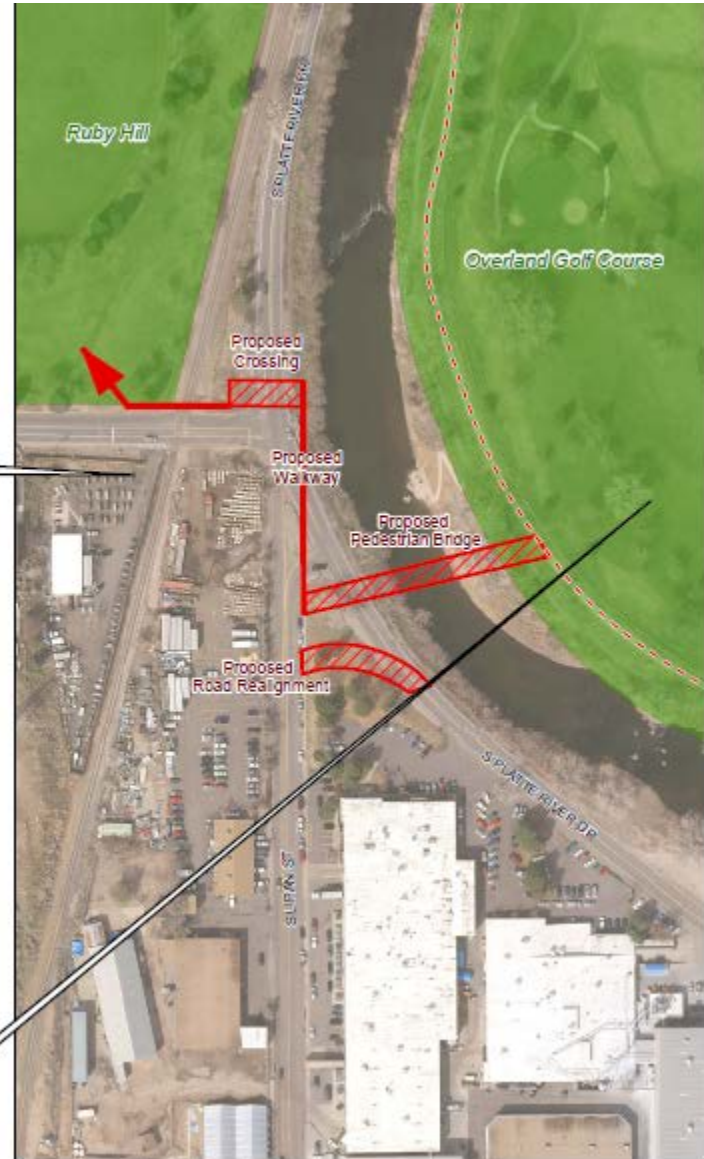




View of area of prosped changes, looking East across the South Platte River



View of area of proposed changes, looking West across the South Platte River



Application of Criteria to Projects

Projects					Regional Significance of Project (40%)							
	Continuation of Existing Investment	Currently or potentially federalized?	Total Project Cost (Millions)	Max Total Regional Project Request (Millions)	Why is the project regionally significant?	Crosses and/or benefits multiple municipalities?	Crosses and benefits another subregion?	How addresses specific Metro-Vision related regional problem?	How the completed project allow people and businesses to thrive & prosper?	How will connectivity to different travel modes be improved by the proposed project?	Strength of funding and/or project partnerships established in association with project?	
I-25 / Alameda - CDOT Central 70 IGA	Y	Y	TBD	TBD	H	H	L	H	H	M	H	
16th street mall	Y	Y	114.00	20.00	H	M	L	H	H	H	H	
I-25/ Broadway	Y	Y	30.00	15.00	M	M	L	H	M	H	M	
Pena & 56th Ave Intersection	Y	Y	6.62	1.30	M	M	L	H	H	M	M	
Overland Ped Bridge	Y	?	4.70	2.35	M	M	L	H	H	H	?	
Colfax BRT	Y	Y	185.00	TBD	M	M	L	H	M	H	H	
Federal Blvd Corridor / Transit Design (STUDY)	Y	?	0.50	0.25	M	M	L	H	M	H	L	
Sheridan Sidewalks	Y	Y	5.00	2.50	L	L	L	H	M	L	M	
Hampden Corridor Multimodal Improvements	Y	?	15.00	7.50	M	L	L	H	H	M	L	
S. Platte Greenway / Cherry Creek Trail: Confluence Bridge Upgrades	Y	Y	13.00	6.50	H	M	L	H	M	H	L	
Sand Creek Regional Trail - Quebec Connection	Y	?	8.30	4.15	M	L	L	H	M	M	M	

Application of Criteria to Projects

Metro Vision TIP Focus Areas (30%)

Projects

	How will the project improve mobility infrastructure and services for vulnerable population (incl improved access to health services)?	How will the project increase the reliability of existing multimodal transportation network?	How will the project improve transportation safety & security?
I-25 / Alameda - CDOT Central 70 IGA	M	H	H
16th street mall	M	M	M
I-25/ Broadway	M	M	H
Pena & 56th Ave Intersection	M	H	H
Overland Ped Bridge	M	M	H
Colfax BRT	M	H	M
Federal Blvd Corridor / Transit Design (STUDY)	M	H	H
Sheridan Sidewalks	M	M	H
Hampden Corridor Multimodal Improvements	L	M	H
S. Platte Greenway / Cherry Creek Trail: Confluence Bridge Upgrades	M	L	M
Sand Creek Regional Trail - Quebec Connection	H	M	H

Application of Criteria to Projects

Projects	Transportation Focused Metro Vision Objectives (20%)								non
	How will project contain urban development in locations designated for urban growth & services?	How will project help increase housing & employment in urban centers?	How will project help improve or expand the region's multimodal transportation system, services & connections?	How will the project improve air quality & reduce GHG emissions?	How will the project help connect people to natural resource or recreational areas?	How will the project help increase access to amenities that support healthy, active choices?	How will the project improve access to opportunity?	How will the project improve the region's competitive position?	Last money in to complete per DRCOG
I-25 / Alameda - CDOT Central 70 IGA	M	M	H	M	M	M	M	M	L
16th street mall	H	M	H	M	L	M	M	M	H
I-25/ Broadway	M	M	H	M	L	M	M	M	L
Pena & 56th Ave Intersection	L	M	H	M	H	M	M	H	H
Overland Ped Bridge	M	M	H	M	H	H	M	L	L
Colfax BRT	H	M	H	H	M	M	M	M	L
Federal Blvd Corridor / Transit Design (STUDY)	M	H	H	M	M	M	M	M	L
Sheridan Sidewalks	M	L	M	M	M	H	M	L	L
Hampden Corridor Multimodal Improvements	M	L	H	M	L	M	L	L	M
S. Platte Greenway / Cherry Creek Trail: Confluence Bridge Upgrades	L	L	M	M	H	H	L	L	L
Sand Creek Regional Trail - Quebec Connection	M	L	M	M	H	H	M	L	L