

Purpose and Need*

Project Purpose:

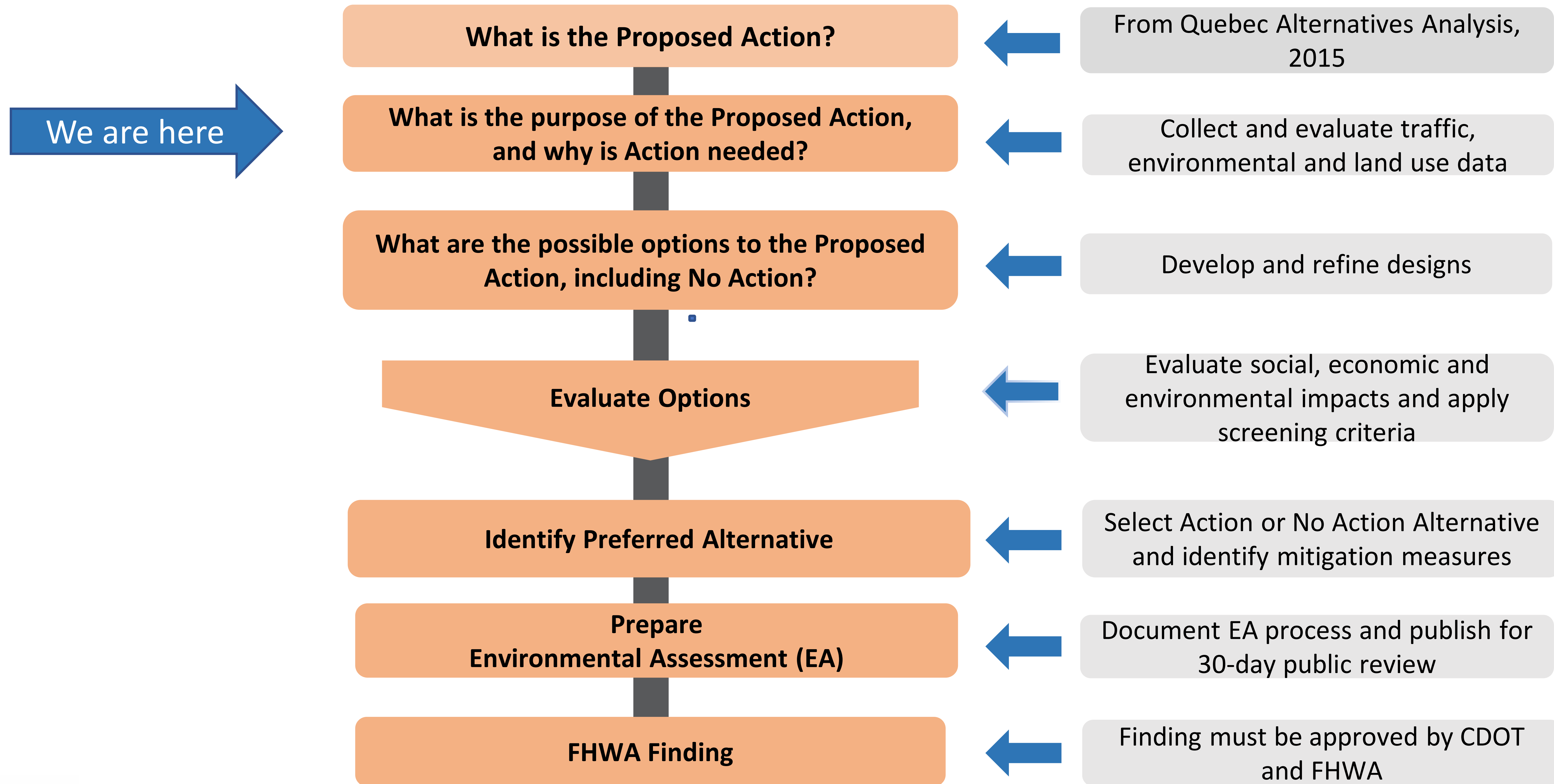
To improve mobility along the corridor by multiple travel modes (pedestrian, vehicles and transit), thereby helping people move safely and efficiently whether they are walking, driving or taking transit.

Needs:

- Heavy congestion and slow travel speeds affect vehicle and bus travel on Quebec throughout much of the day.
- Travel modes are poorly connected due to missing sidewalks, lack of bus shelters, and signalized intersections without pedestrian crossing phases.
- Drivers divert to neighborhood streets, causing congestion and safety concerns.
- Vehicles turning onto or from Quebec at most intersections have long waits and turns against oncoming traffic.
- Some bicycle lanes across Quebec are not continuous, requiring riders to cross in front of turning vehicles.

* May be refined as data is obtained

NEPA Environmental Assessment Process



Environmental Considerations

- Land Use/Right-of-Way
- Community and Social Resources
- Economic Resources
- Traffic Noise
- Air Quality
- Cultural Resources
- Environmental Justice
- Transportation Facilities
- Parks and Recreation
- Hazardous Materials
- Utilities
- Visual Context
- Biological Resources (Wildlife/Birds/Vegetation)
- Water Resources



Fred Thomas Park



Quebec Street North of Colfax Avenue



Quebec Street with missing sidewalks and vehicular congestion

Quebec Corridor Project Steps

