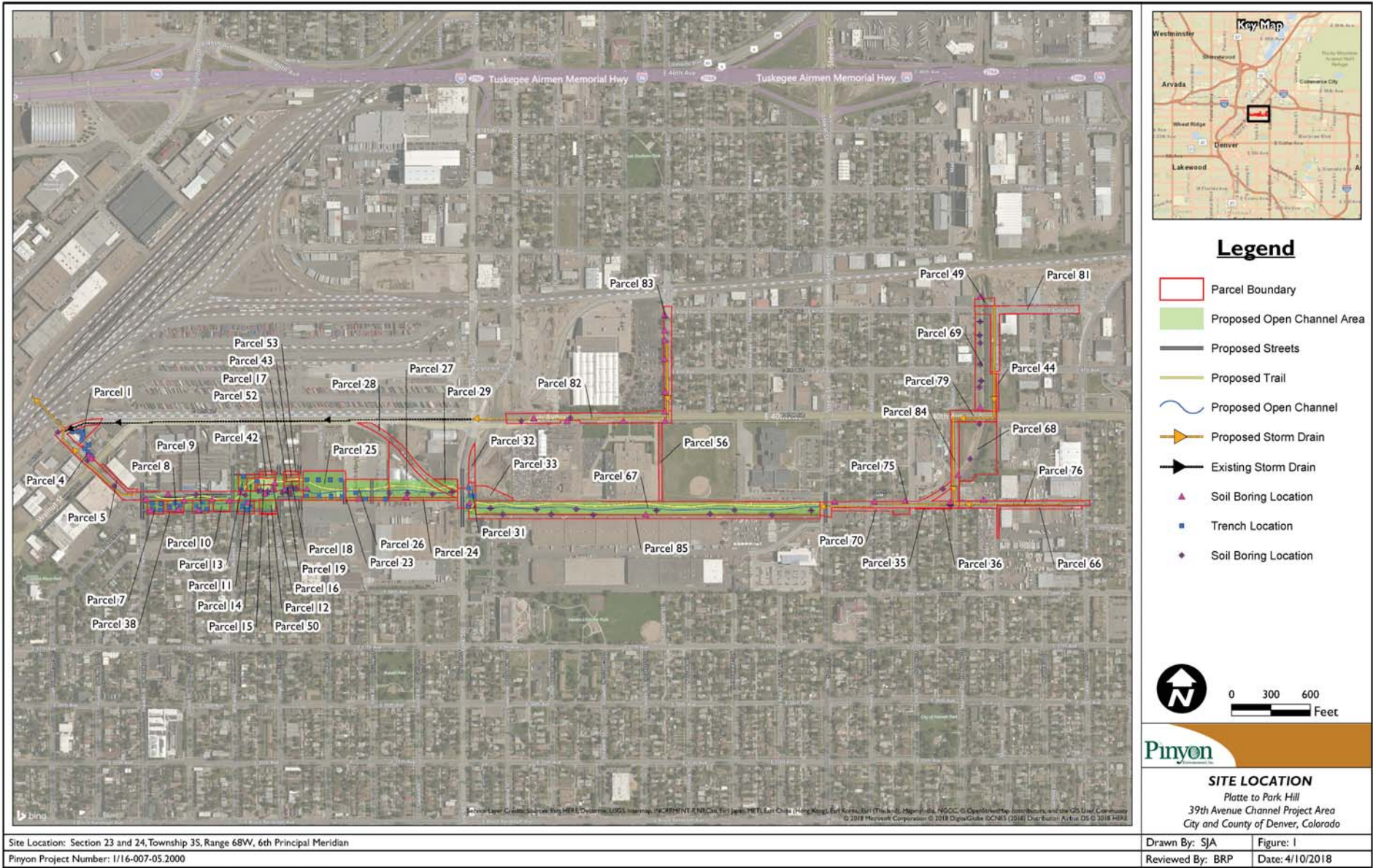


NEXT STEPS | Environmental Test Locations



NEXT STEPS | Environmental Test Results

○ Sampling Efforts in Right-of-Way

- November 2016 total of 51 soil samples from 19 soil borings
- July 2017 total of 76 soil samples from 38 soil borings

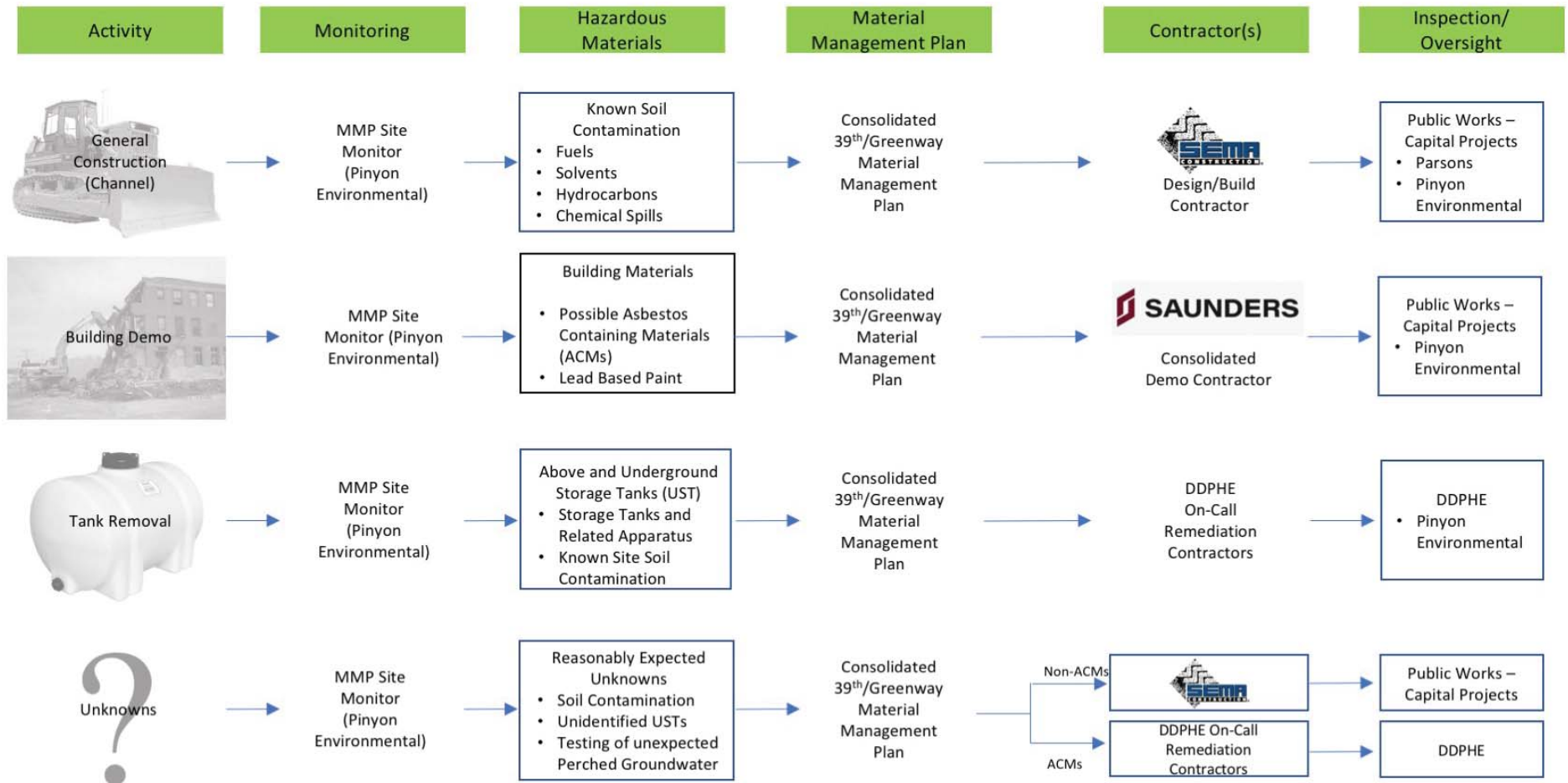
○ Individual Parcel Due Diligence

- 36 Phase I Environmental Site Assessment Reports
- 9 Phase II Environmental Site Assessments
 - 24 test trenches
 - Total of 50 soil/debris samples

○ Material Identified

- Materials exceeding screening levels at limited locations
 - PAHs, aroclors, arsenic, lead, chromium
- Building debris in soil
 - ACM – one location

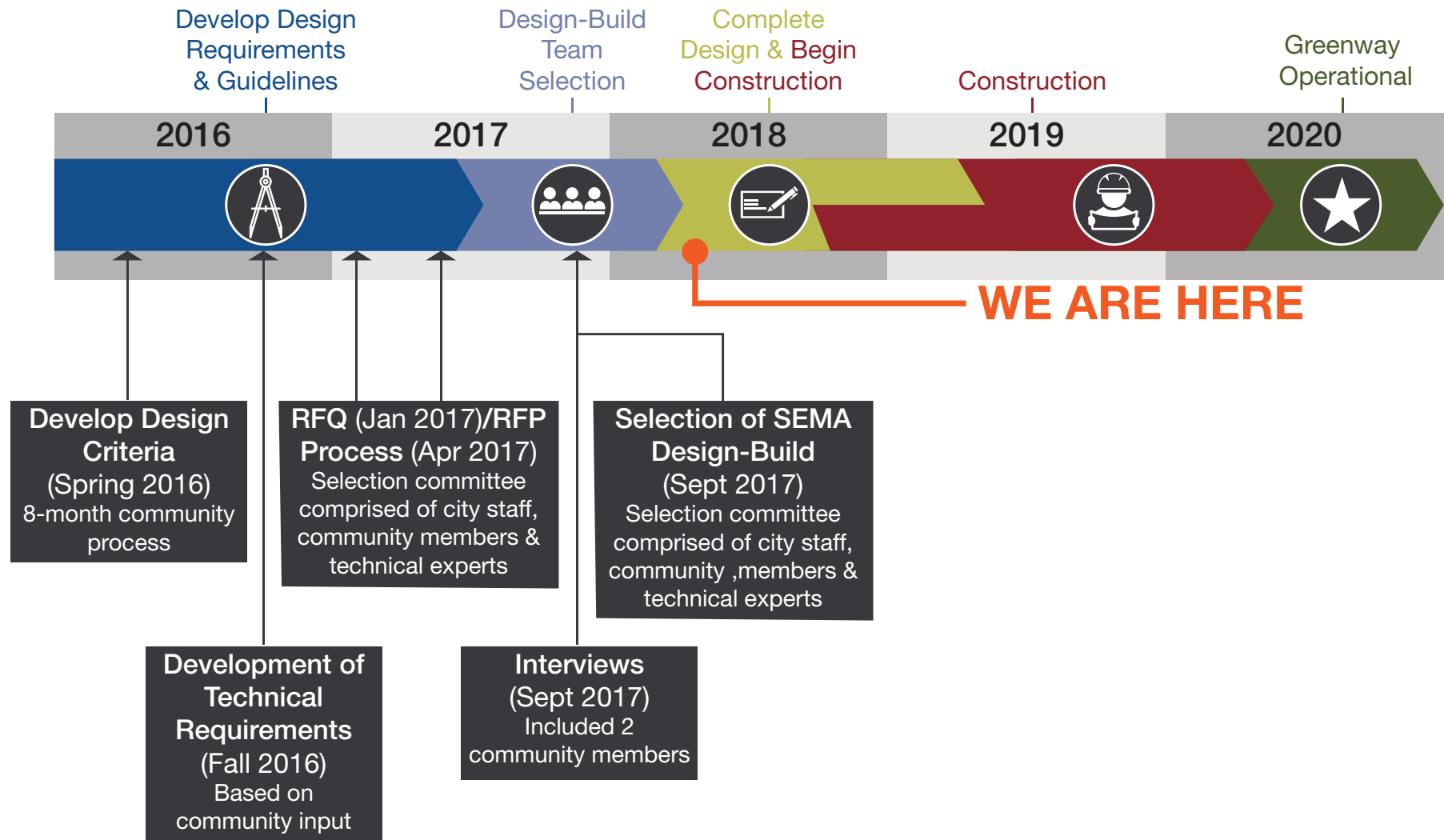
NEXT STEPS | Environmentally Related Roles & Responsibilities



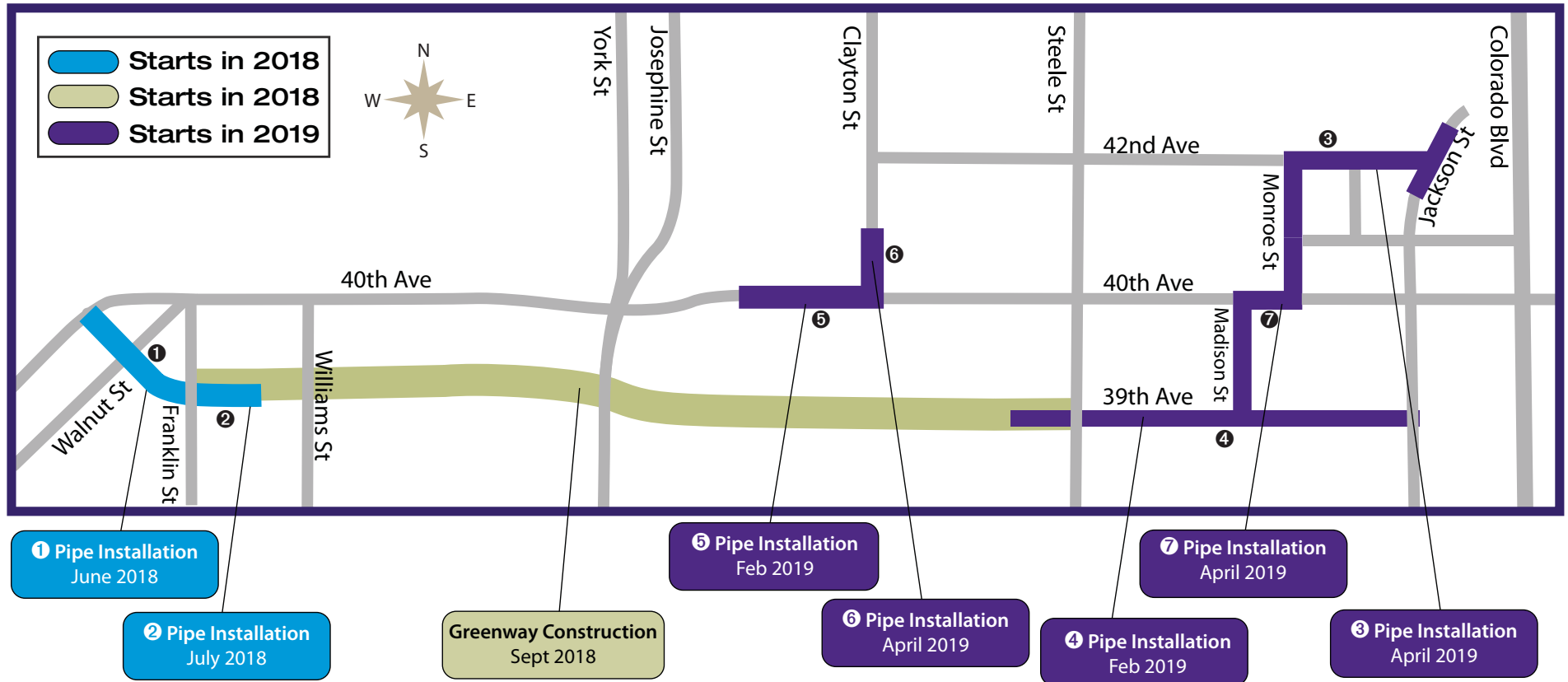
MMP = Material Management Plan

DDPHE = Denver Department of Public Health and Environment

NEXT STEPS | Path to Design and Construction



NEXT STEPS | Construction Schedule



NEXT STEPS | Stay Connected

Community Driven Process

2015

Flood Relief Alternatives Analysis

Winter 2016

Discussion of Requirements

Fall 2017

Selection of Design-Build Team

May 2, 2018

Feedback on Initial Designs

Early Summer 2018

Feedback on Design Refinements

Late Summer 2018

Feedback on Final Design

Project Website:

www.39thAveGreenway.org



Bilingual Project Hotline:

720-457-6222



Project email:

39thAveGreenway@PublicInfoTeam.com



Text Sign-Up:

Send "39thAve" to 313131

