

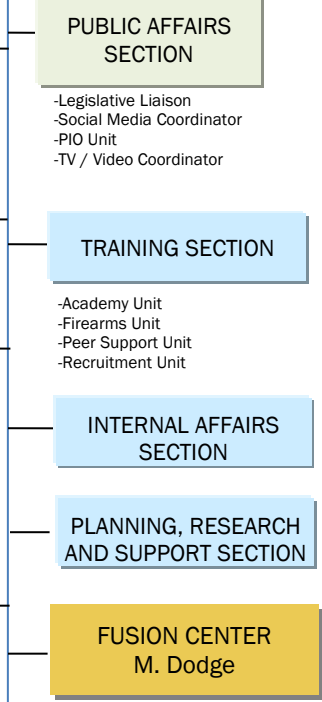
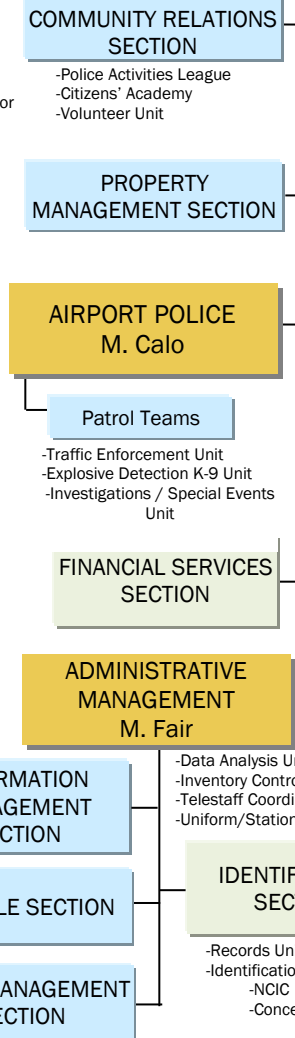
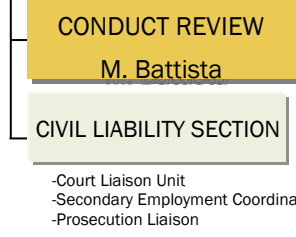
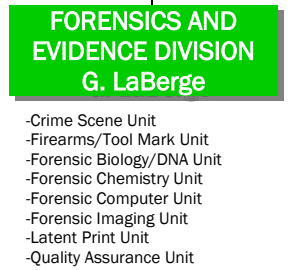
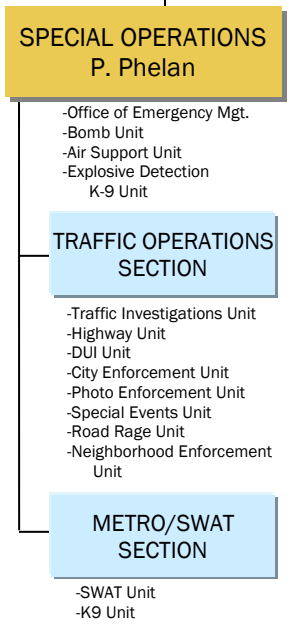
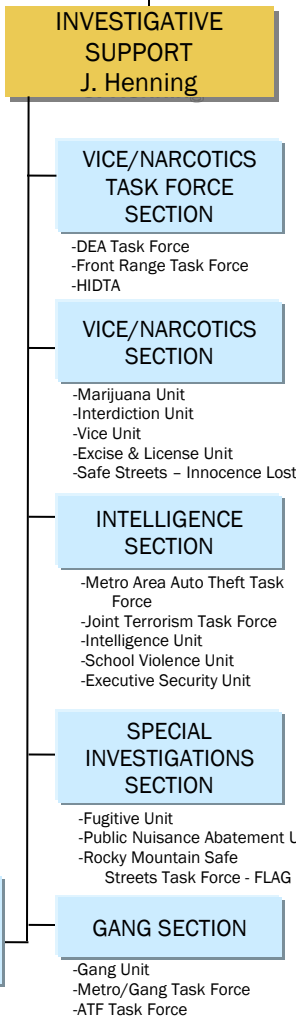
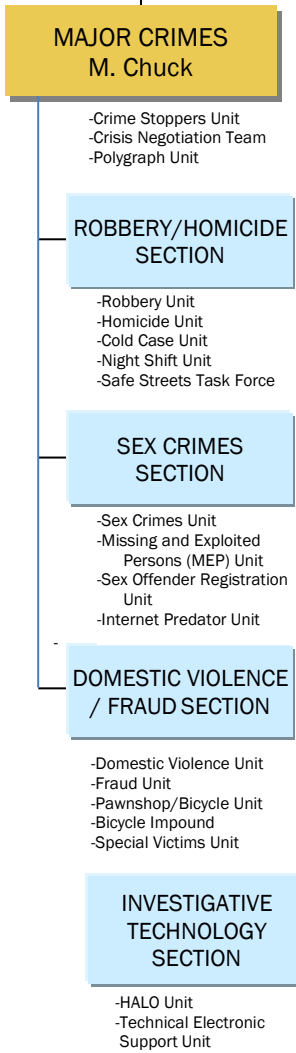
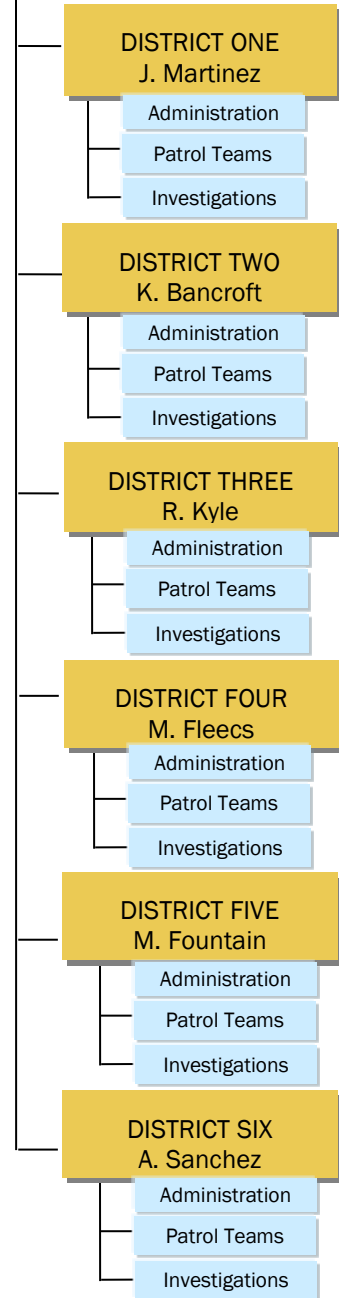
**Chief of Police  
Paul M. Pazen**

**Deputy Chief  
Barb Archer**

**Division Chief Investigations  
Joe Montoya**

**Division Chief Patrol  
Ron Thomas**

**Division Chief Administration  
Ron Saunier**



**Key: color indicates the rank or title managing a specific Division, Section or Unit:**

Commander:	Orange
Civilian Director:	Green
Captain, Lieutenant or Sergeant:	Light Blue
Civilian Manager:	Light Green