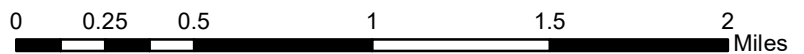
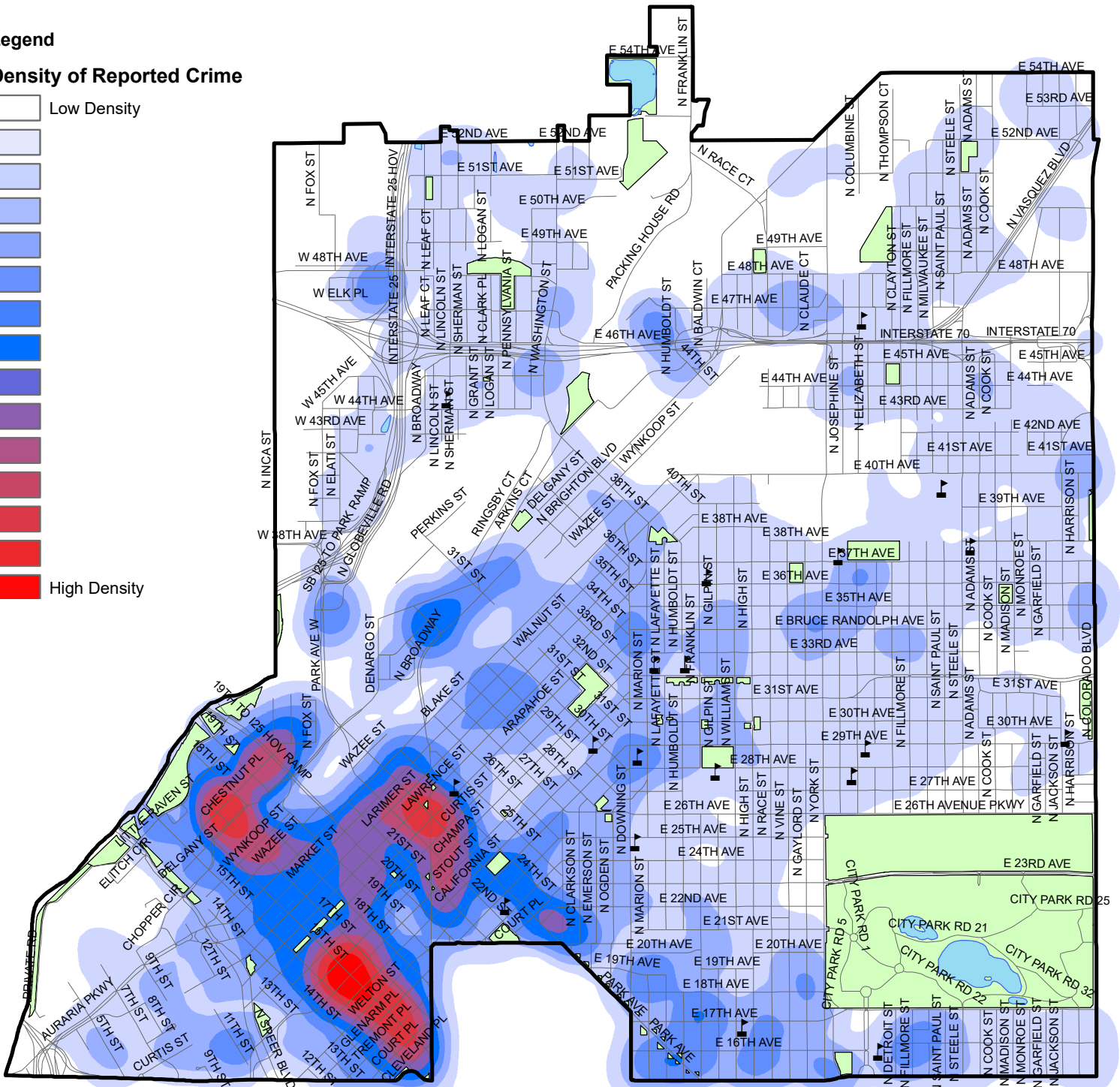


COUNCIL DISTRICT 9

Jan-Sept 2020

Legend

Density of Reported Crime



PART 1 CRIME IN COUNCIL DISTRICT 9 BASED ON UCR STANDARDS

TYPE OF OFFENSE		JAN-SEP 2019		JAN-SEP 2020		CHANGE	
		#	%	#	%	#	%
VIOLENT CRIME	Murder	16	0.3%	12	0.2%	-4	-25.0%
	Rape	107	2.1%	84	1.6%	-23	-21.5%
	Robbery	201	4.0%	185	3.5%	-16	-8.0%
	Aggravated Assault	607	12.1%	740	14.1%	133	21.9%
SUBTOTAL		931	18.5%	1,021	19.4%	90	9.7%
PART 1 PROPERTY	Burglary	479	9.5%	666	12.7%	187	39.0%
	Larceny (Except Theft from MV)	2,072	41.2%	1,708	32.5%	-364	-17.6%
	Theft from Motor Vehicle	1,009	20.1%	1,129	21.5%	120	11.9%
	Auto theft	519	10.3%	706	13.4%	187	36.0%
	Arson	14	0.3%	32	0.6%	18	128.6%
SUBTOTAL		4,093	81.5%	4,241	80.6%	148	3.6%
PART 1 TOTAL		5,024	100.0%	5,262	100.0%	238	4.7%

All files utilized in the creation of this report are dynamic. Dynamic files allow additions, deletions and/or modifications at any time, resulting in more complete and accurate records in the databases. Due to continuous data entry after reports are compiled, numbers may vary in previous or subsequent reports.

PREPARED TO DEPARTMENT OF SAFETY PUBLIC INFORMATION STANDARDS

Excludes runaways, traffic offenses, unfounded reports and non-criminal activity.

REPORTED OFFENSES USING NIBRS DEFINITIONS IN COUNCIL DISTRICT 9

TYPE OF OFFENSE		JAN-SEP 2019		JAN-SEP 2020		CHANGE	
		#	%	#	%	#	%
CRIMES AGAINST PERSONS	Murder	16	0.1%	12	0.1%	-4	-25.0%
	Aggravated Assault	607	5.4%	760	7.3%	153	25.2%
	Forcible Sex Offenses	109	1.0%	86	0.8%	-23	-21.1%
	Non-Forcible Sex Offenses	0	0.0%	1	0.0%	1	NA
	Kidnapping/Abduction	19	0.2%	34	0.3%	15	78.9%
	Simple Assault	1,055	9.3%	828	7.9%	-227	-21.5%
	Intimidation	266	2.4%	209	2.0%	-57	-21.4%
	SUBTOTAL	2,072	18.3%	1,930	18.4%	-142	-6.9%
CRIMES AGAINST PROPERTY	Arson	16	0.1%	32	0.3%	16	100.0%
	Bribery	1	0.0%	0	0.0%	-1	-100.0%
	Burglary	500	4.4%	688	6.6%	188	37.6%
	Counterfeiting/Forgery	46	0.4%	31	0.3%	-15	-32.6%
	Criminal Mischief/Damaged Property	975	8.6%	1,212	11.6%	237	24.3%
	Embezzlement	3	0.0%	4	0.0%	1	33.3%
	Extortion	7	0.1%	5	0.0%	-2	-28.6%
	Fraud	223	2.0%	205	2.0%	-18	-8.1%
	Larceny	2,077	18.4%	1,712	16.3%	-365	-17.6%
	Theft from Motor Vehicle	1,018	9.0%	1,145	10.9%	127	12.5%
	Motor Vehicle Theft	526	4.7%	709	6.8%	183	34.8%
	Robbery	201	1.8%	186	1.8%	-15	-7.5%
Stolen Property	7	0.1%	8	0.1%	1	14.3%	
	SUBTOTAL	5,600	49.6%	5,937	56.7%	337	6.0%
CRIMES AGAINST SOCIETY	Drug/Narcotics Violations	718	6.4%	395	3.8%	-323	-45.0%
	Gambling	0	0.0%	0	0.0%	0	NA
	Child Pornography	6	0.1%	0	0.0%	-6	-100.0%
	Prostitution	24	0.2%	1	0.0%	-23	-95.8%
	Weapon Law Violations	311	2.8%	295	2.8%	-16	-5.1%
	SUBTOTAL	1,059	9.4%	691	6.6%	-368	-34.7%
ALL OTHER OFFENSES	Fraud - NSF - Closed Account	0	0.0%	0	0.0%	0	NA
	Curfew	23	0.2%	23	0.2%	0	0.0%
	Disorderly Conduct / Disturbing the Peace	301	2.7%	202	1.9%	-99	-32.9%
	Family Offenses / Nonviolent	63	0.6%	59	0.6%	-4	-6.3%
	Liquor Law/Drunkenness	210	1.9%	73	0.7%	-137	-65.2%
	Other Sex Offenses	104	0.9%	51	0.5%	-53	-51.0%
	Violation of a Restraining/Court Order	170	1.5%	165	1.6%	-5	-2.9%
	Harassment	68	0.6%	51	0.5%	-17	-25.0%
	Criminal Trespassing	1,075	9.5%	926	8.8%	-149	-13.9%
All Other Offenses	554	4.9%	366	3.5%	-188	-33.9%	
	SUBTOTAL	2,568	22.7%	1,916	18.3%	-652	-25.4%
GRAND TOTAL		11,299	100.0%	10,474	100.0%	-825	-7.3%

All files utilized in the creation of this report are dynamic. Dynamic files allow additions, deletions and/or modifications at any time, resulting in more complete and accurate records in the databases. Due to continuous data entry after reports are compiled, numbers may vary in previous or subsequent reports.

PREPARED TO DEPARTMENT OF SAFETY PUBLIC INFORMATION STANDARDS

Excludes runaways, traffic offenses, unfounded reports and non-criminal activity.