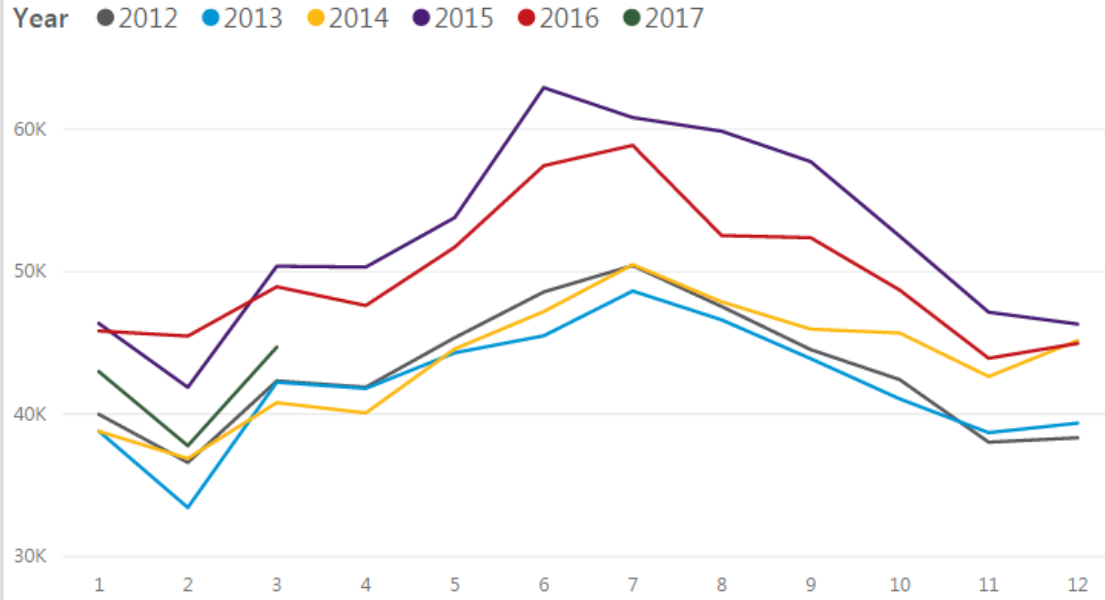
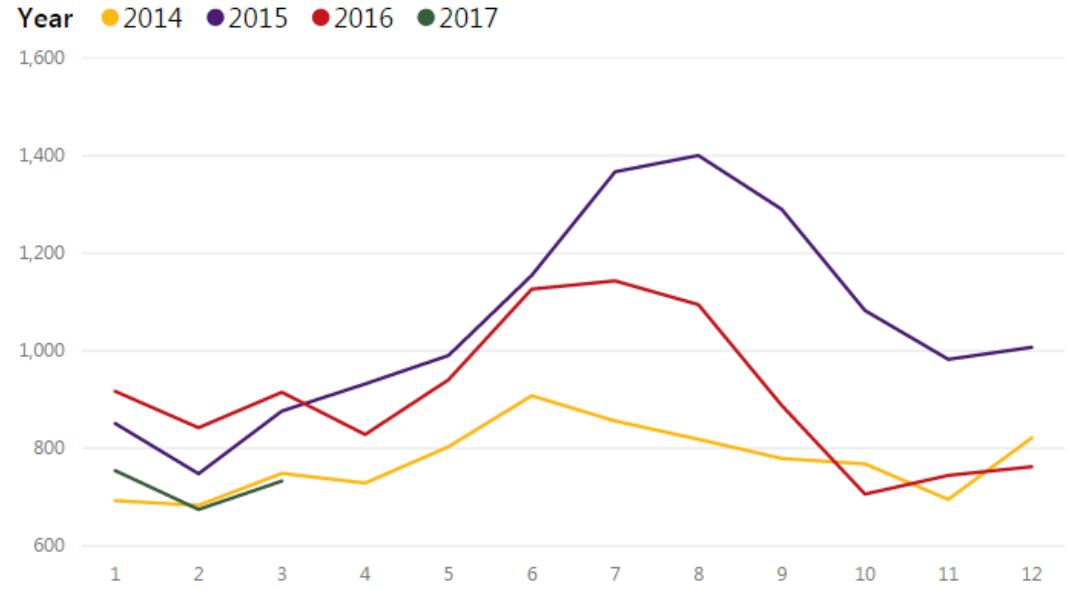


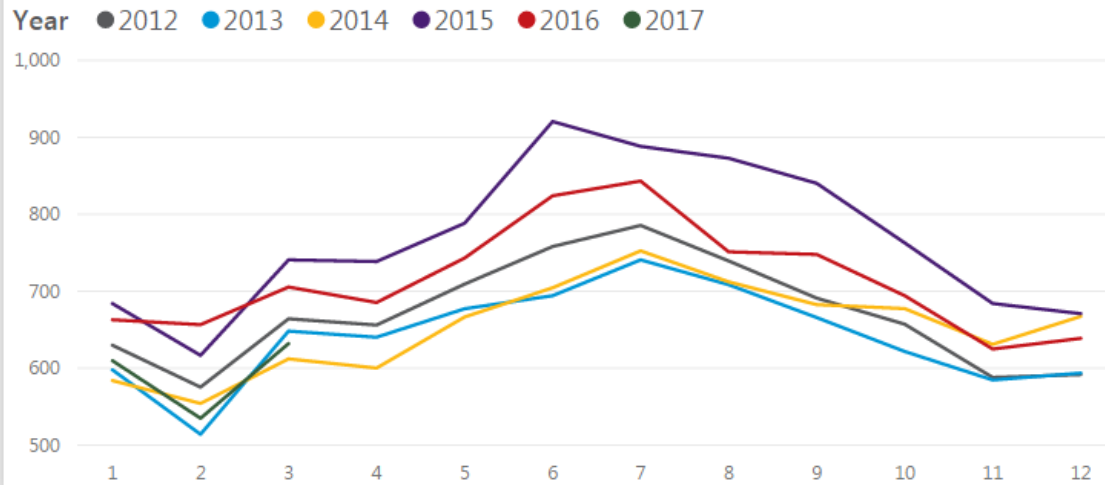
Call Volume by Month



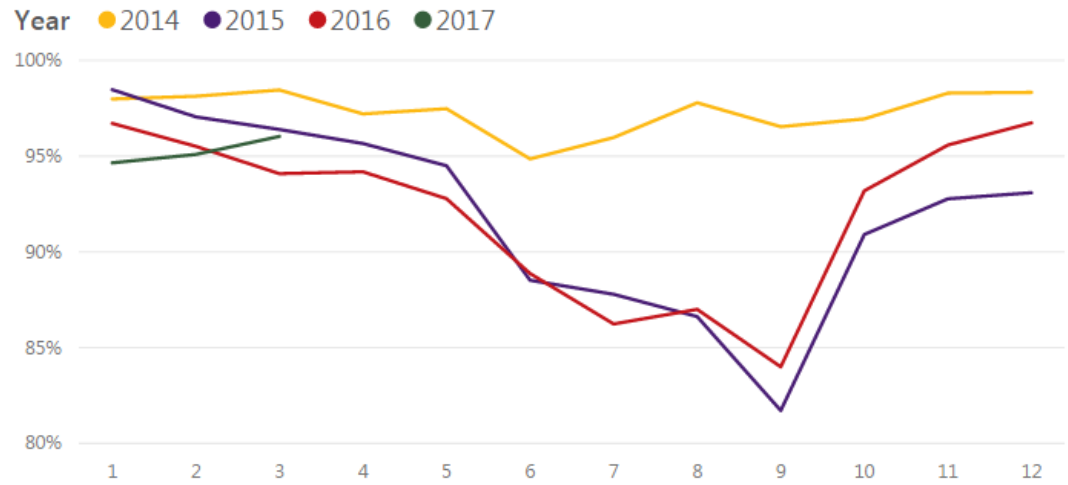
Calls per Staff Member by Month and Year



Calls per 10,000 Residents by Month

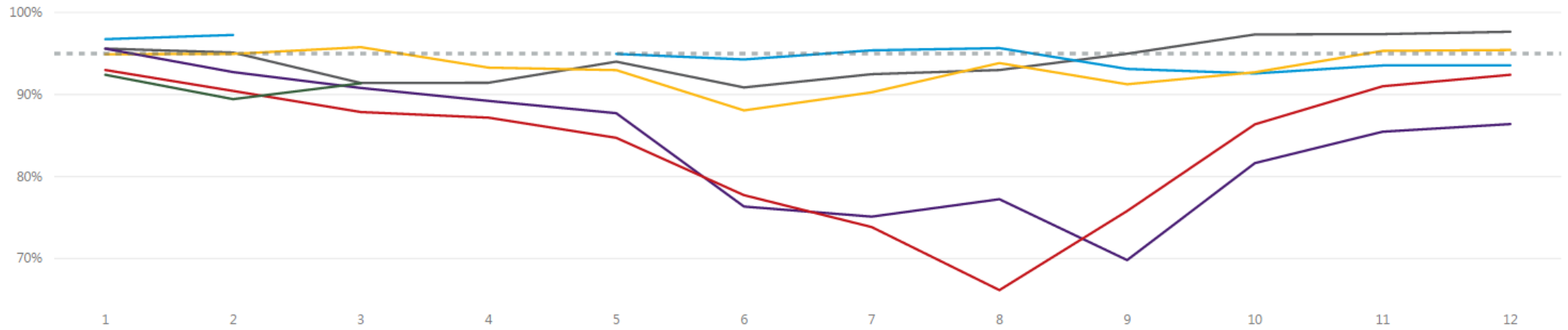


NFPA 40 second Compliance Rate by Month and Year



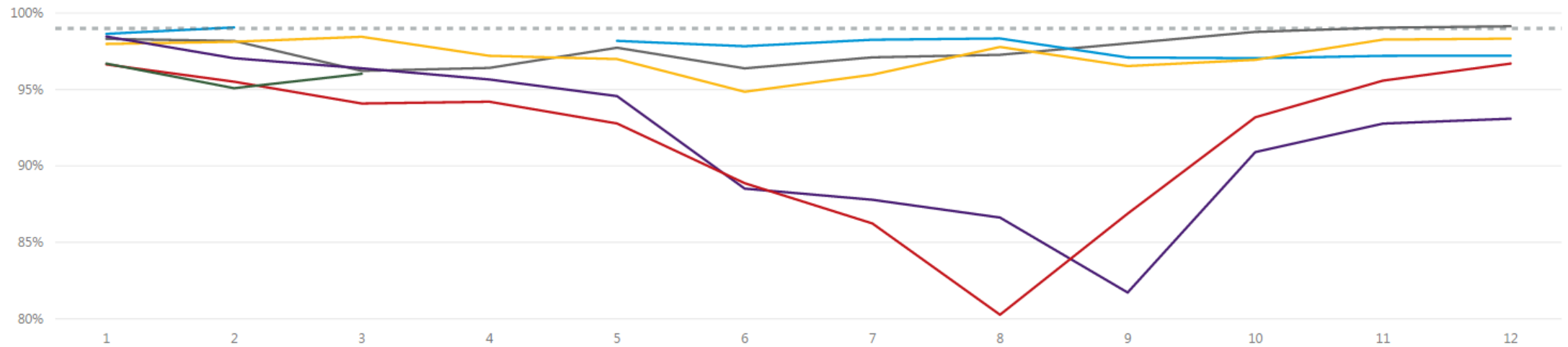
### Speed of Answer: NFPA 16 Second Compliance by Month

Year ● 2012 ● 2013 ● 2014 ● 2015 ● 2016 ● 2017 *Note: Data not available for February - April 2013*

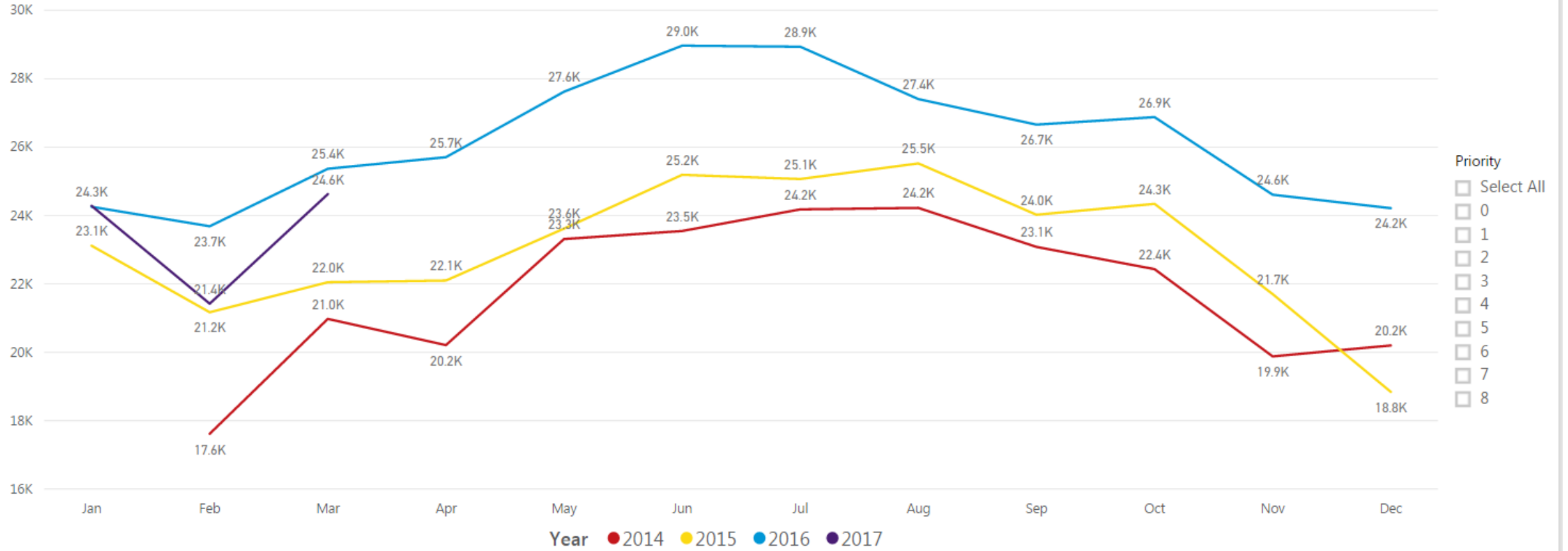


### Speed of Answer: NFPA 40 Second Compliance by Month

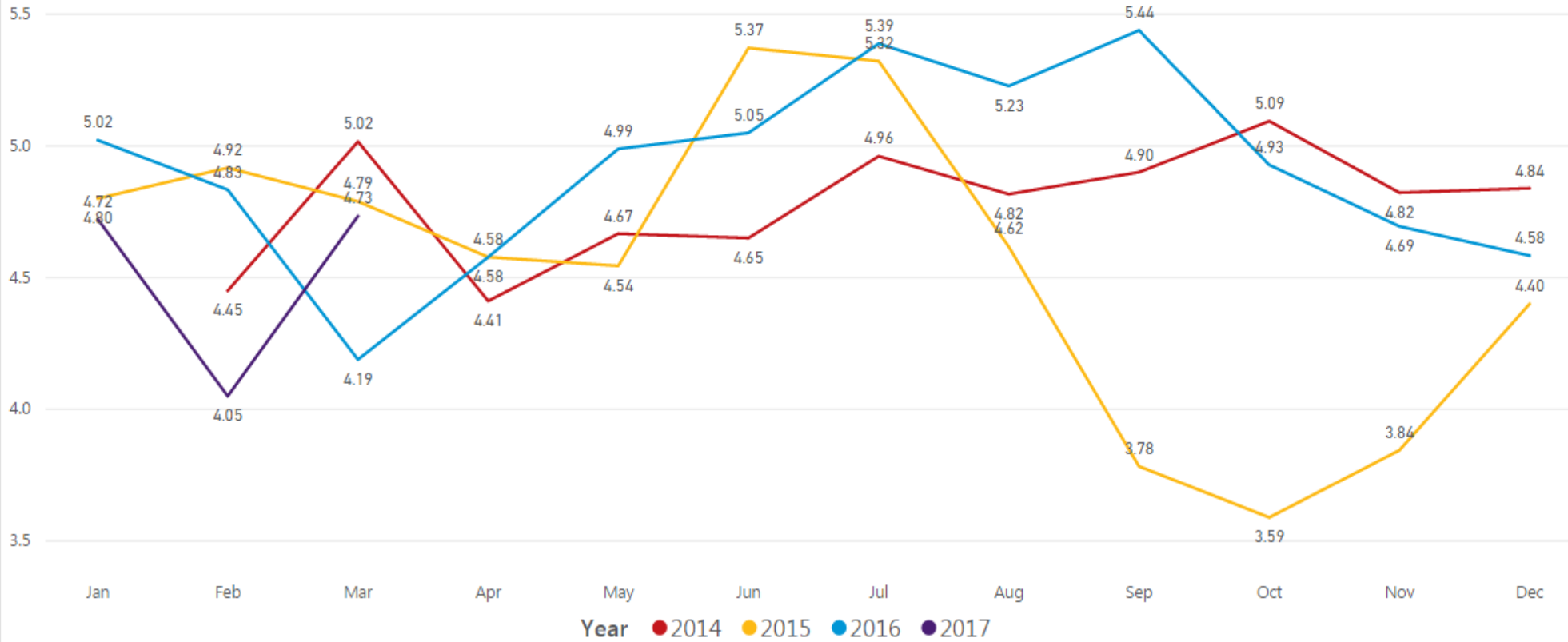
Year ● 2012 ● 2013 ● 2014 ● 2015 ● 2016 ● 2017 *Note: Data not available for February - April 2013*



# Calls Dispatched by Month - PD Only



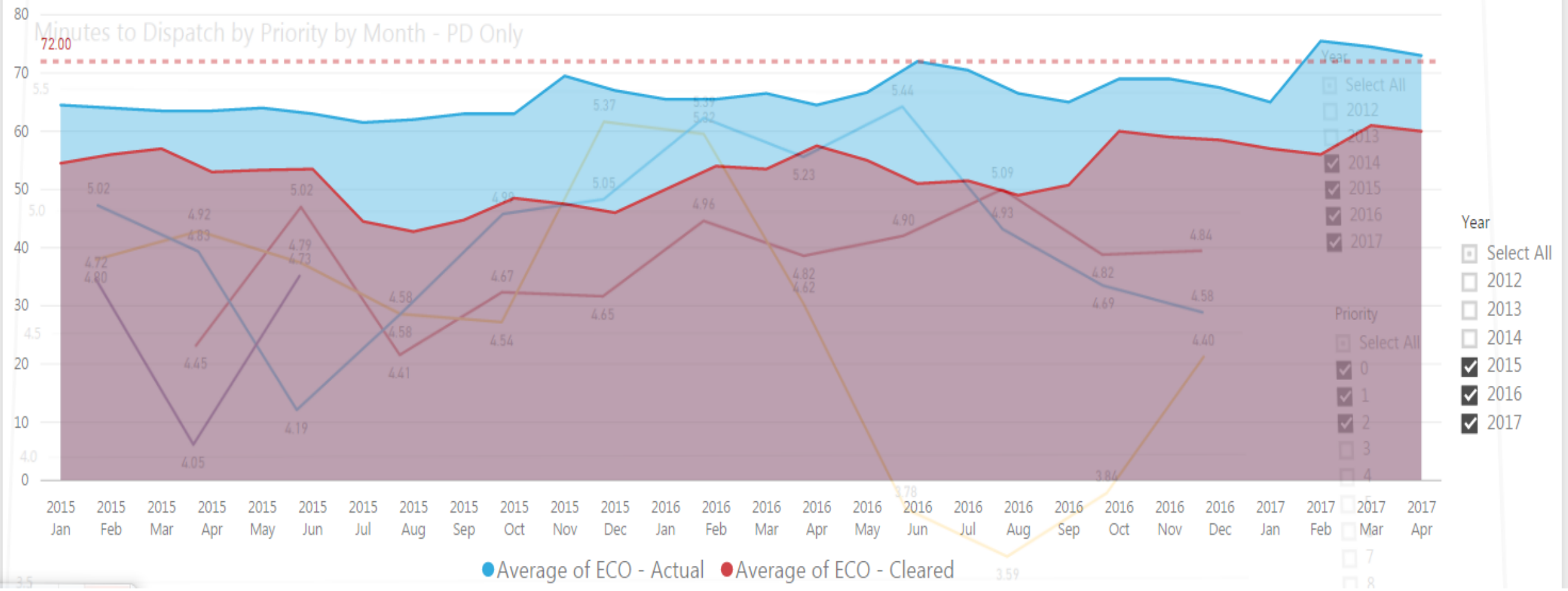
Minutes to Dispatch by Priority by Month - PD Only



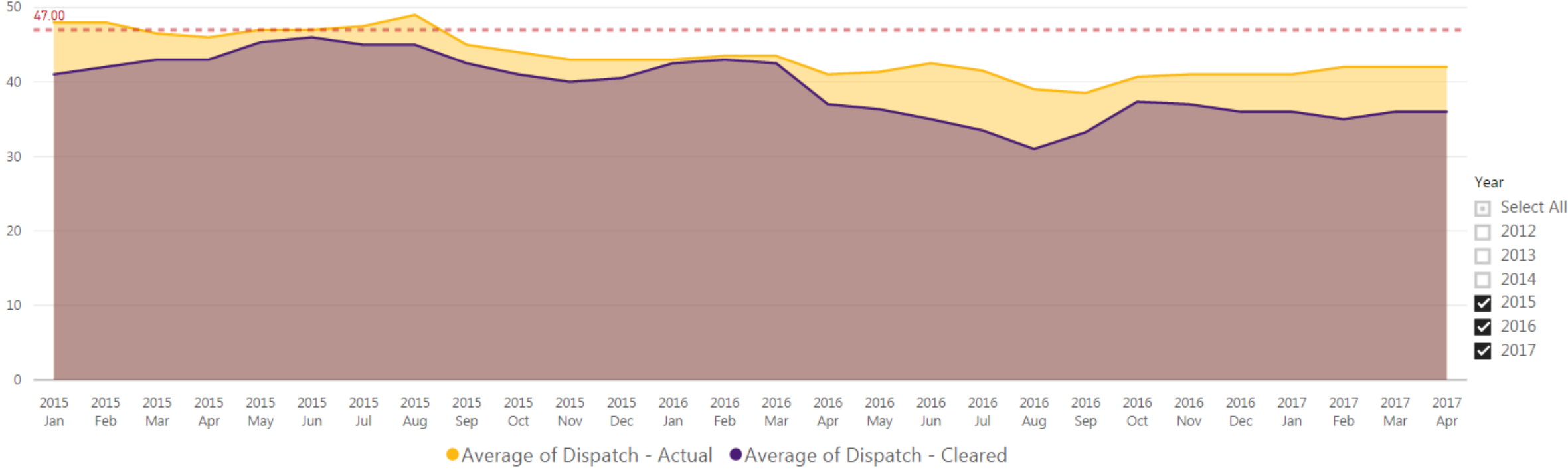
- Year
- Select All
  - 2012
  - 2013
  - 2014
  - 2015
  - 2016
  - 2017

- Priority
- Select All
  - 0
  - 1
  - 2
  - 3
  - 4
  - 5
  - 6
  - 7
  - 8

# Operator Staffing Actual vs Cleared for Independent Duty by Month

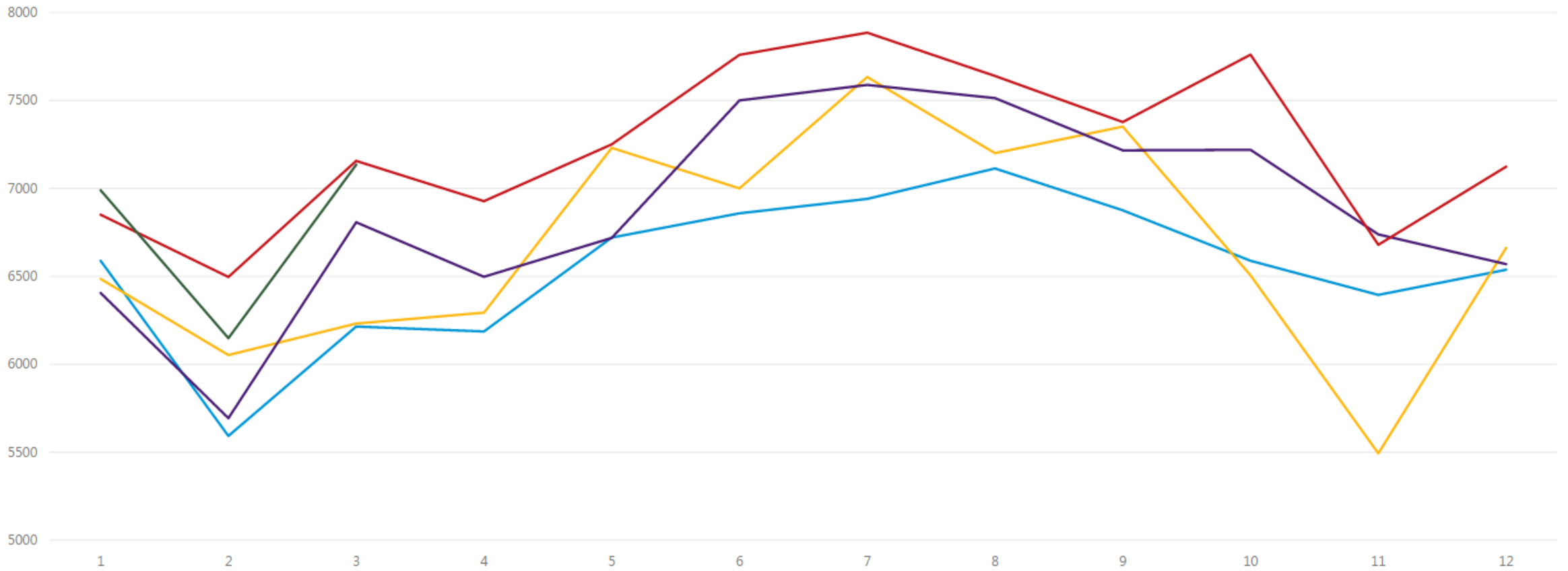


Dispatch Staffing Actual vs Cleared for Independent Duty by Month



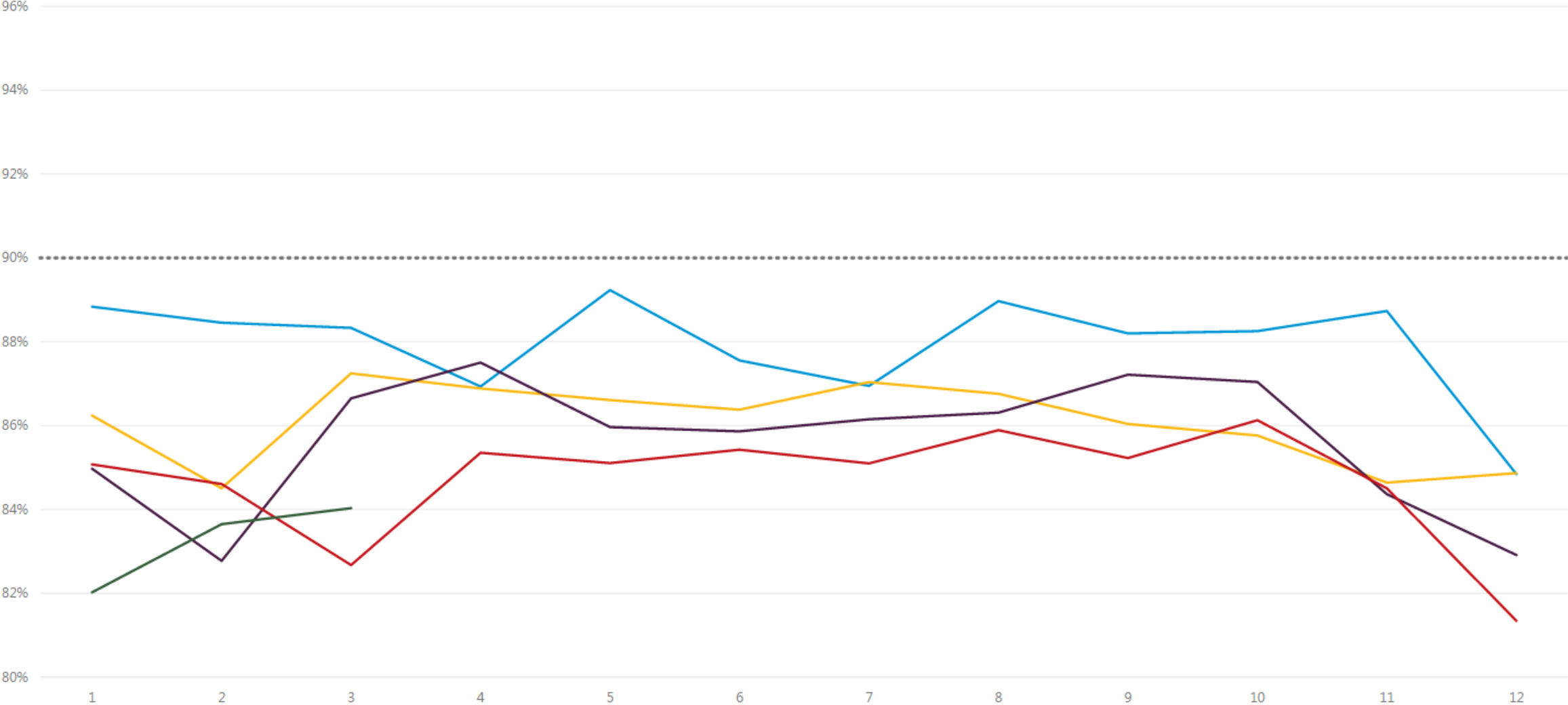
## Total Fire Incidents by Month

Year ● 2013 ● 2014 ● 2015 ● 2016 ● 2017



Fire Turnout/Travel Compliance - Percentage within 5 Minute Goal by Month

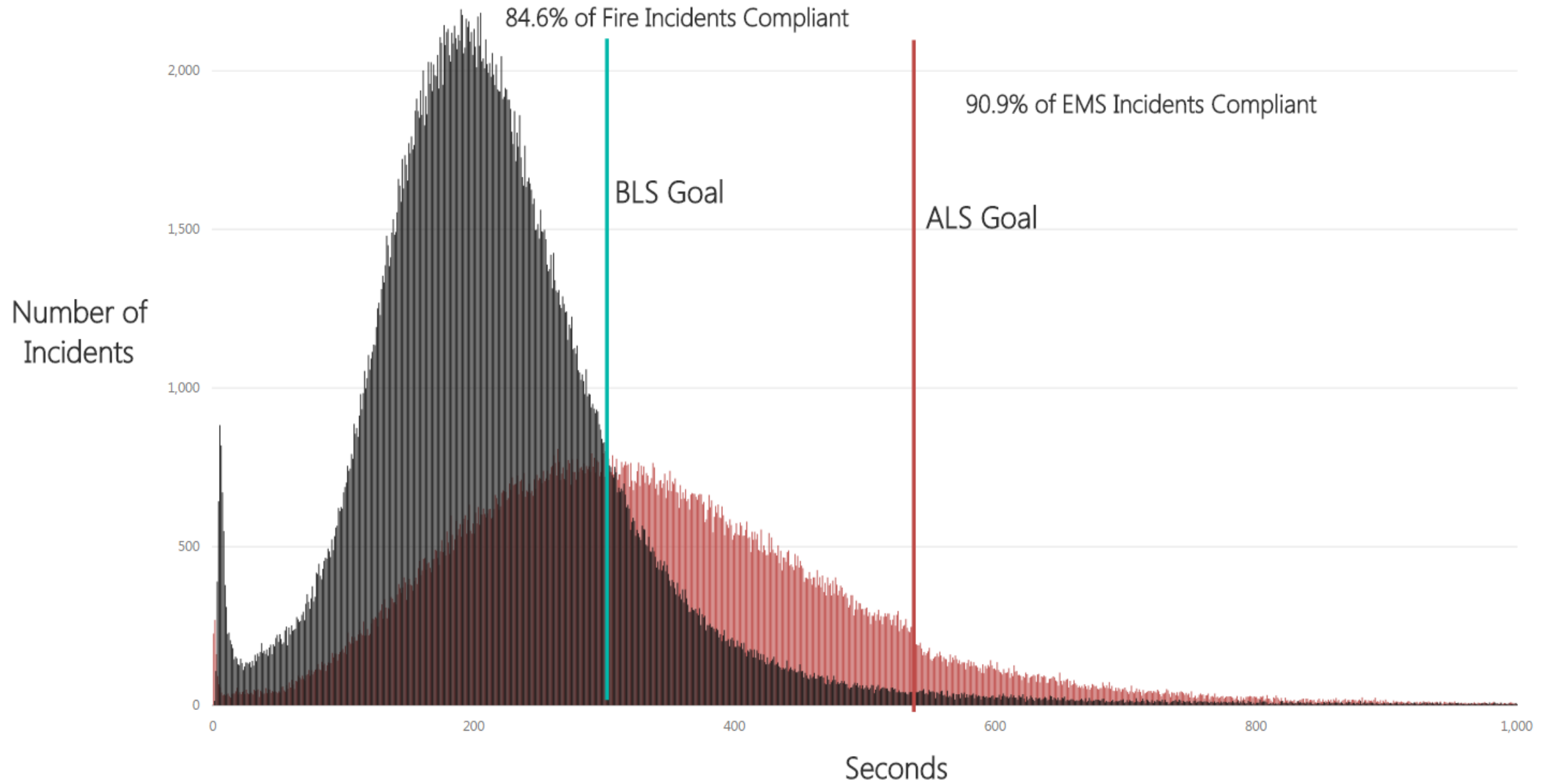
Year ● 2013 ● 2014 ● 2015 ● 2016 ● 2017





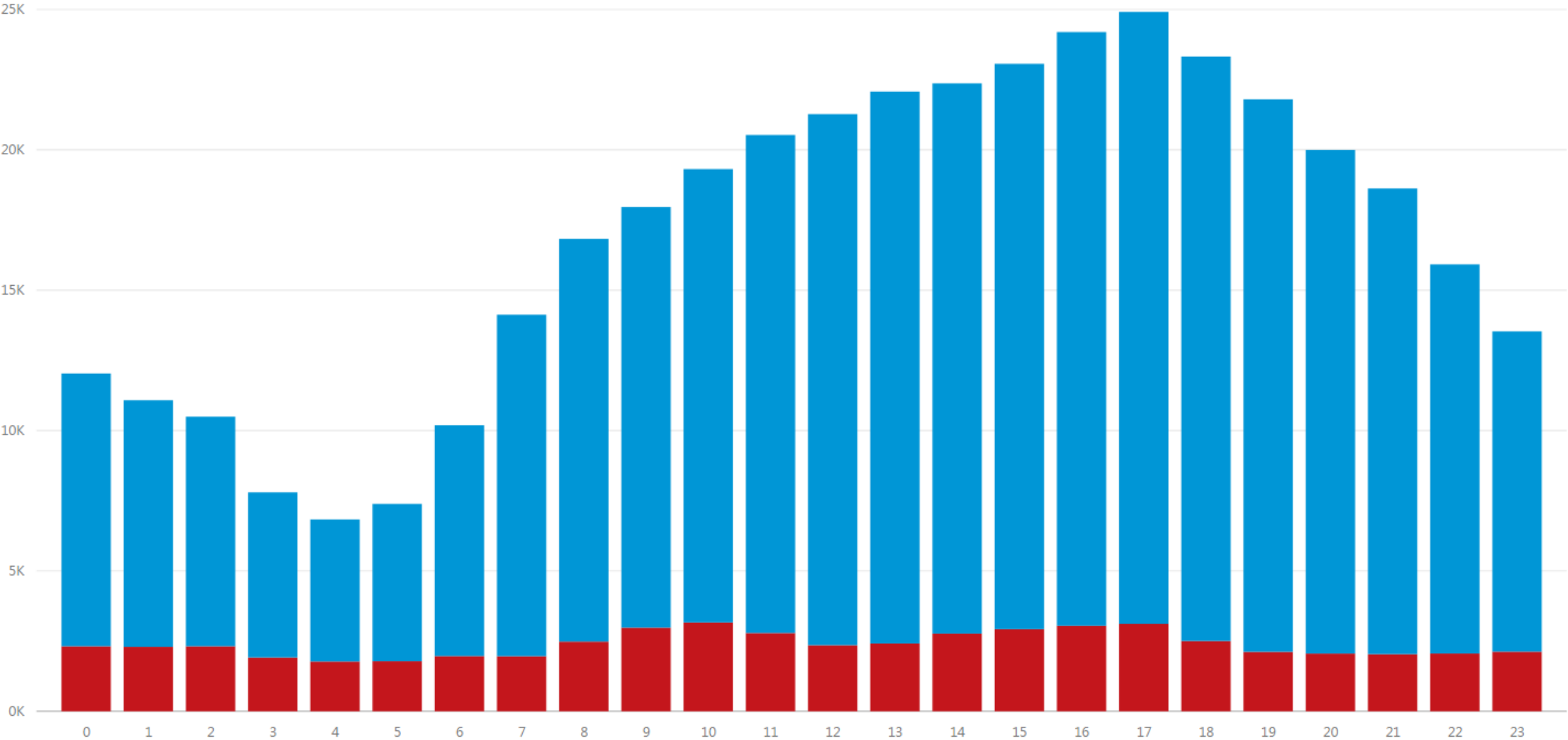
# EMS and Fire Call Response Times (in seconds) - 1/1/2013-3/31/2017

AGENCY\_TYPE ● EMS ● Fire



# Fire Response Time Compliance by Hour of Day (Military Time)

● Not Within Goal ● Within Goal



# EPCR Compliance

# 0%

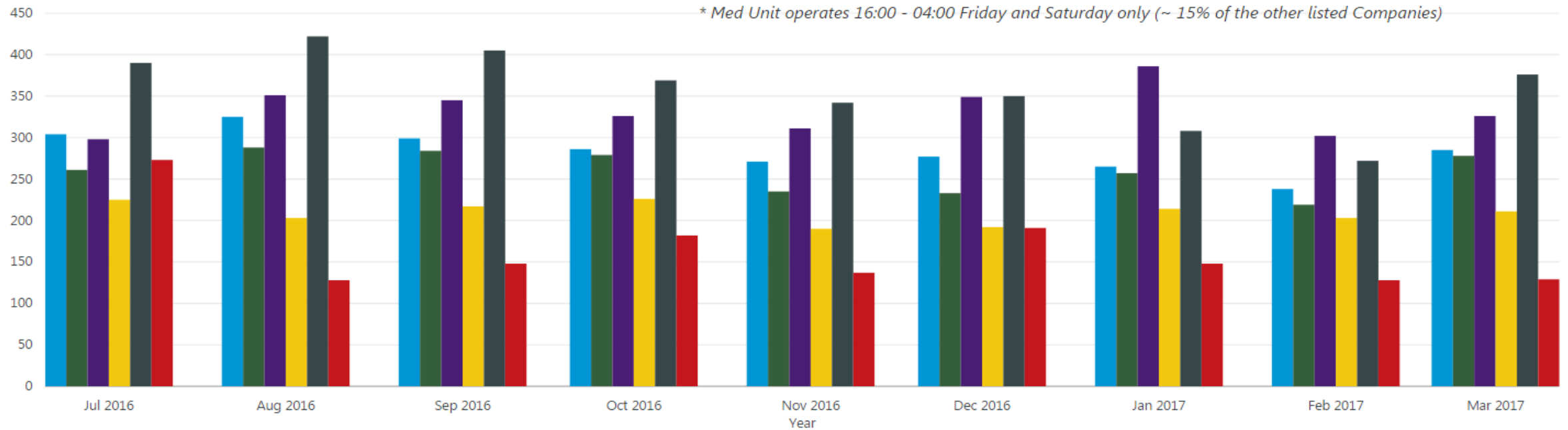
*(Patient Trip Reports Submitted for  
EMS Responses)*

---

## # of EMS Responses by DFD Company

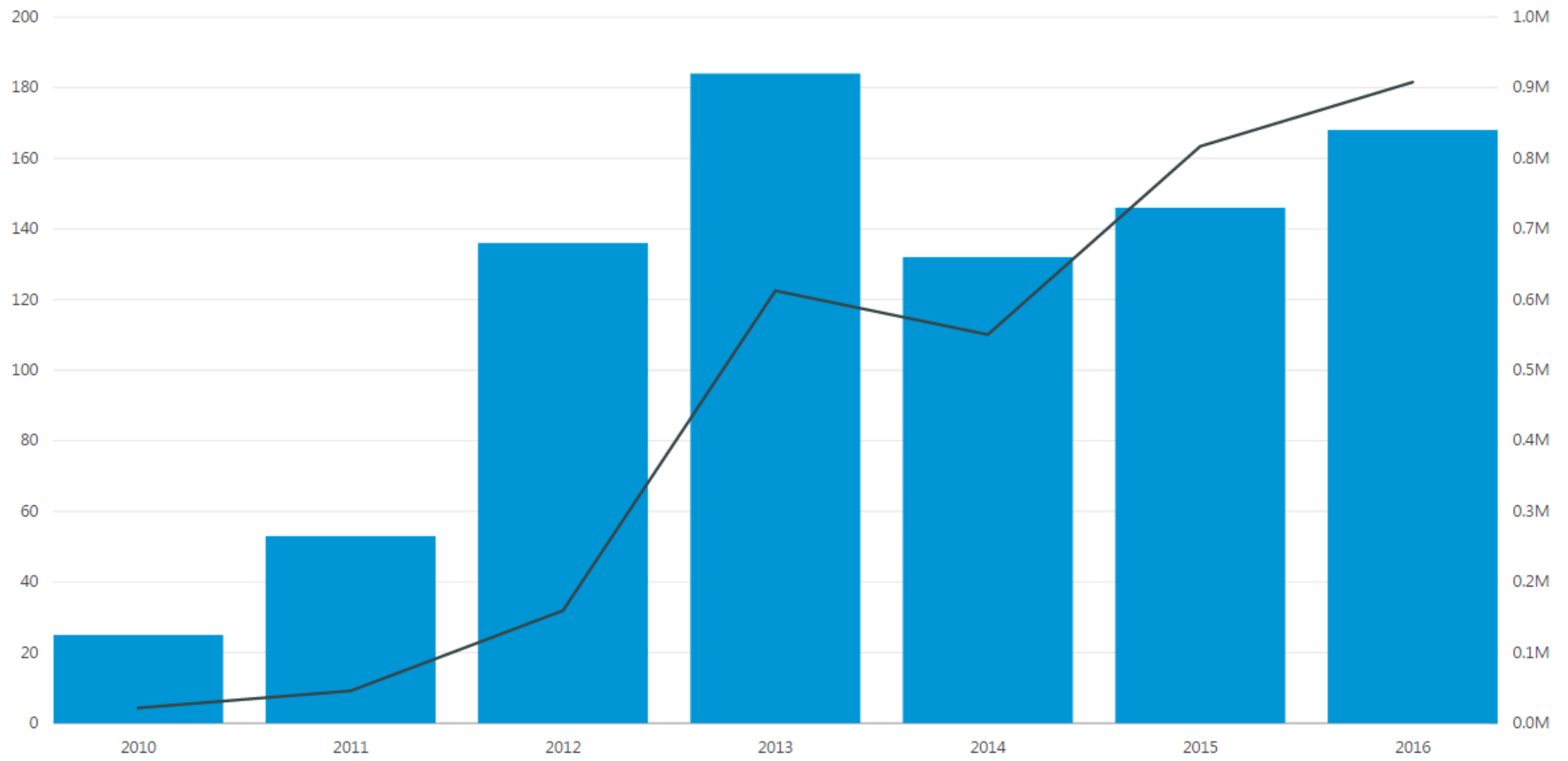
● Engine 1 ● Engine 3 ● Tower 4 ● Engine 6 ● Engine 8 ● Med Unit\*

*\* Med Unit operates 16:00 - 04:00 Friday and Saturday only (~ 15% of the other listed Companies)*

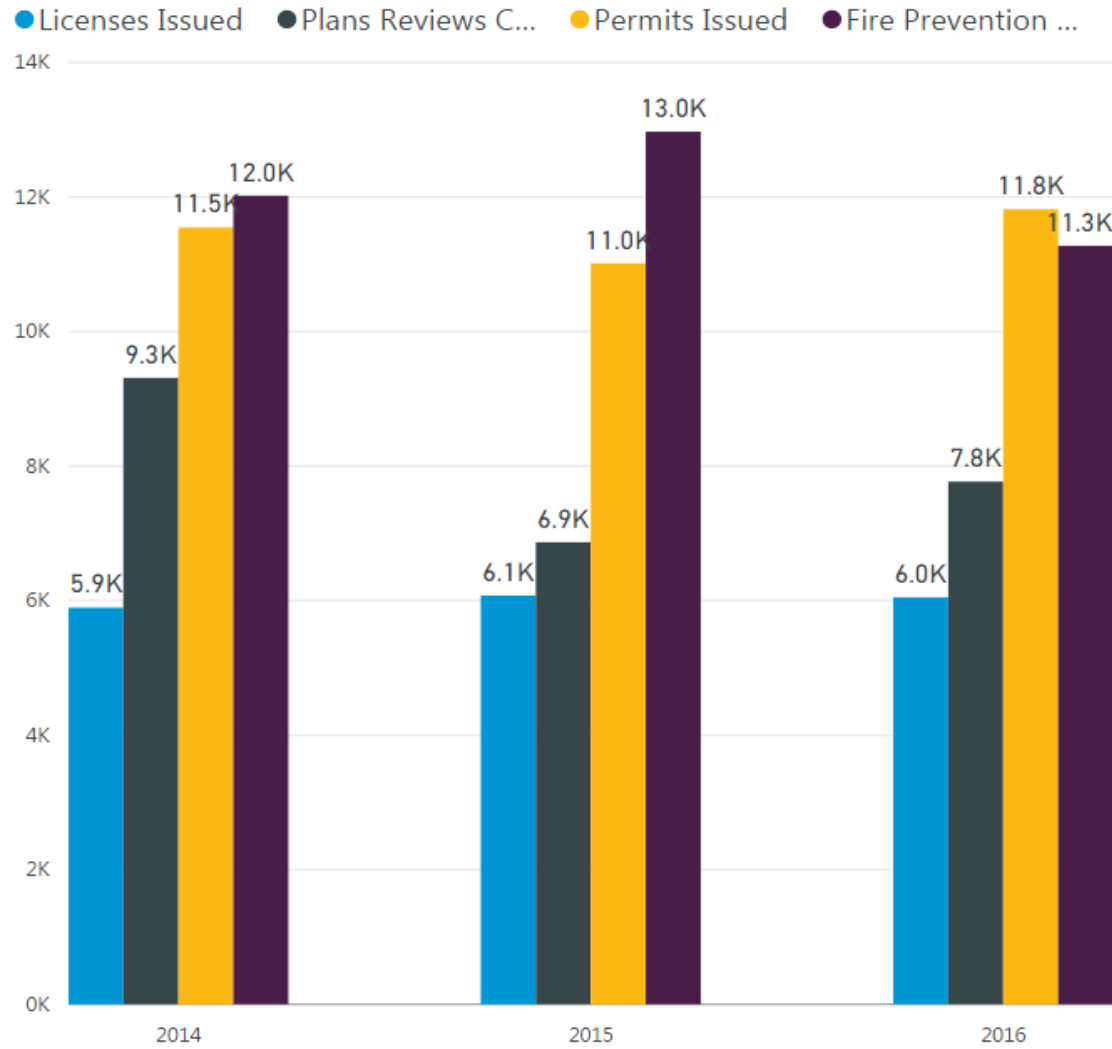


DFD Wildland Deployments (Personnel Deployed vs. Net Revenue)

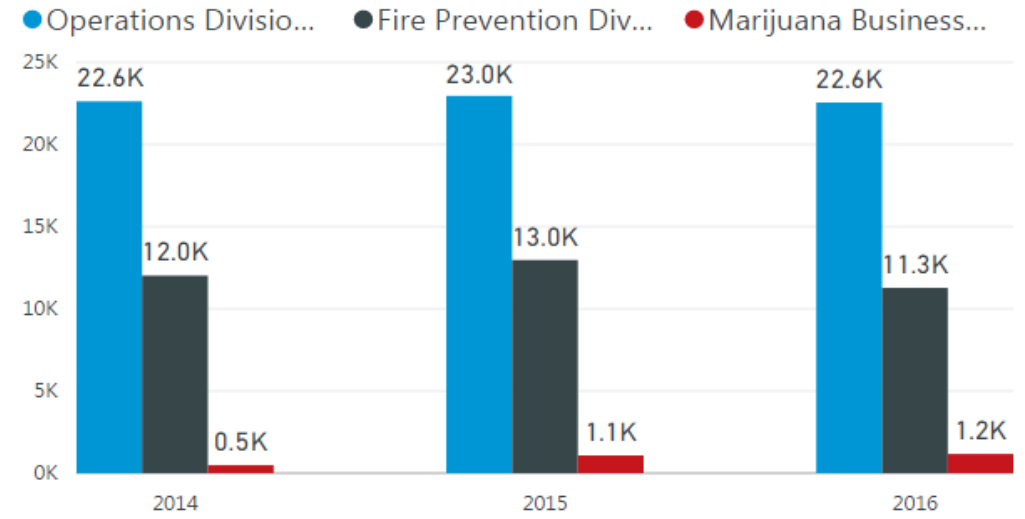
● # Personnel Deployed ● Net Revenue



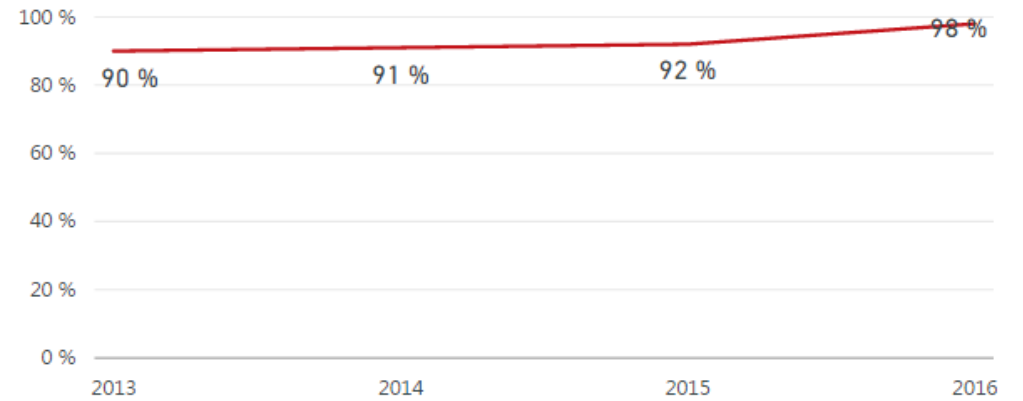
### Fire Prevention Division Workload by Year



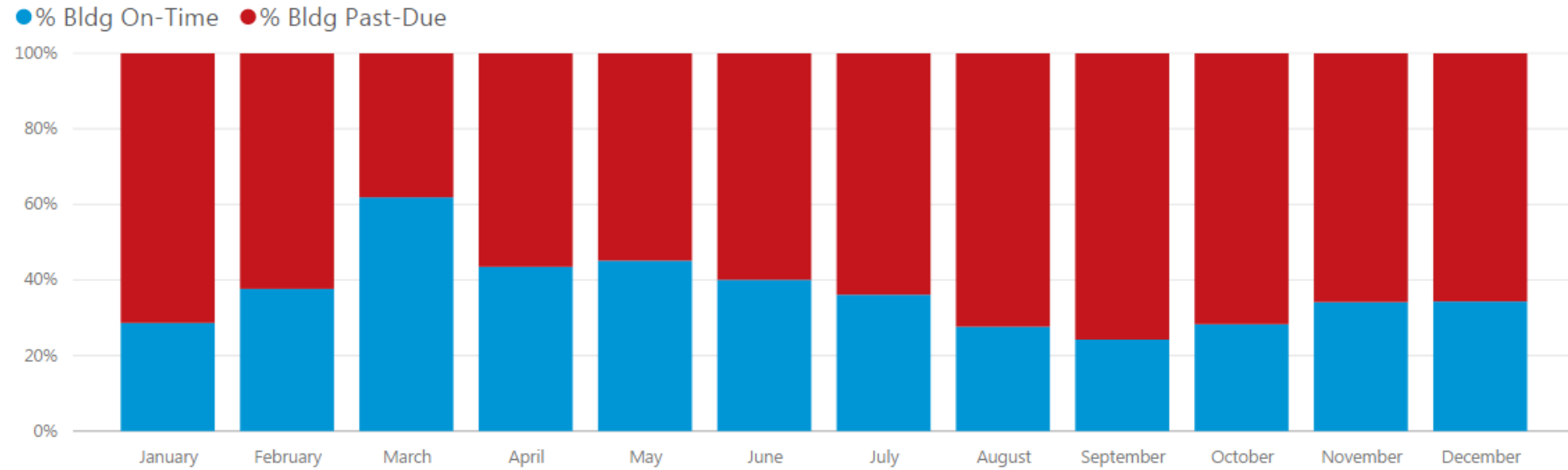
### Inspections Completed by Type



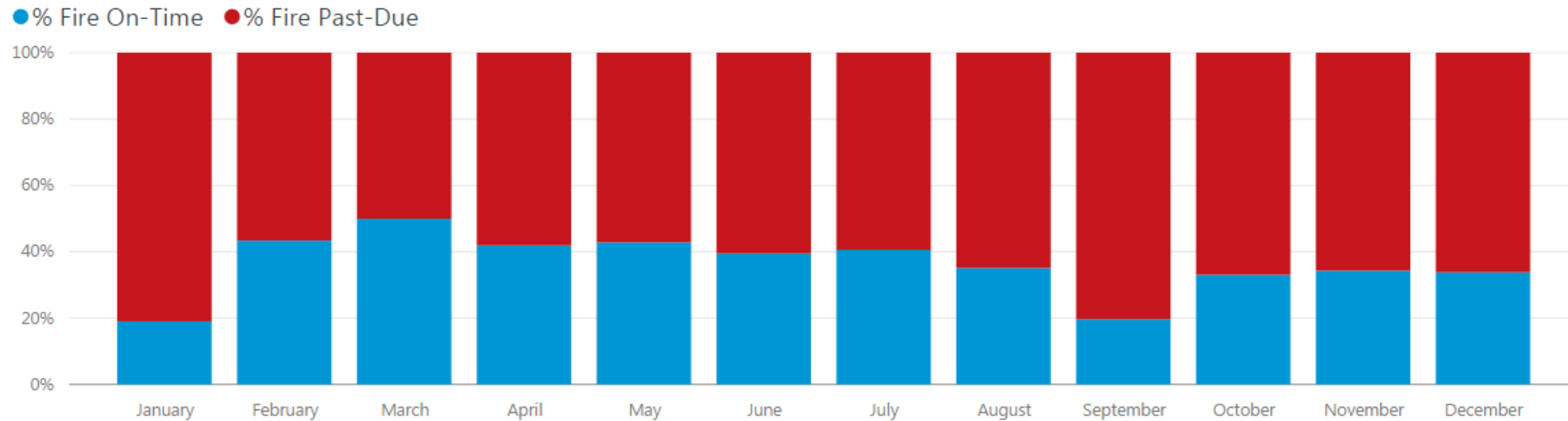
### % of DFD Inspections Completed by Year



### 2016 Building Reviews Completed On-Time (%)



### 2016 Fire Reviews Completed On-Time (%)



# DFD Uniform Personnel Staffing Levels

● Authorized/Budget ● Actual

