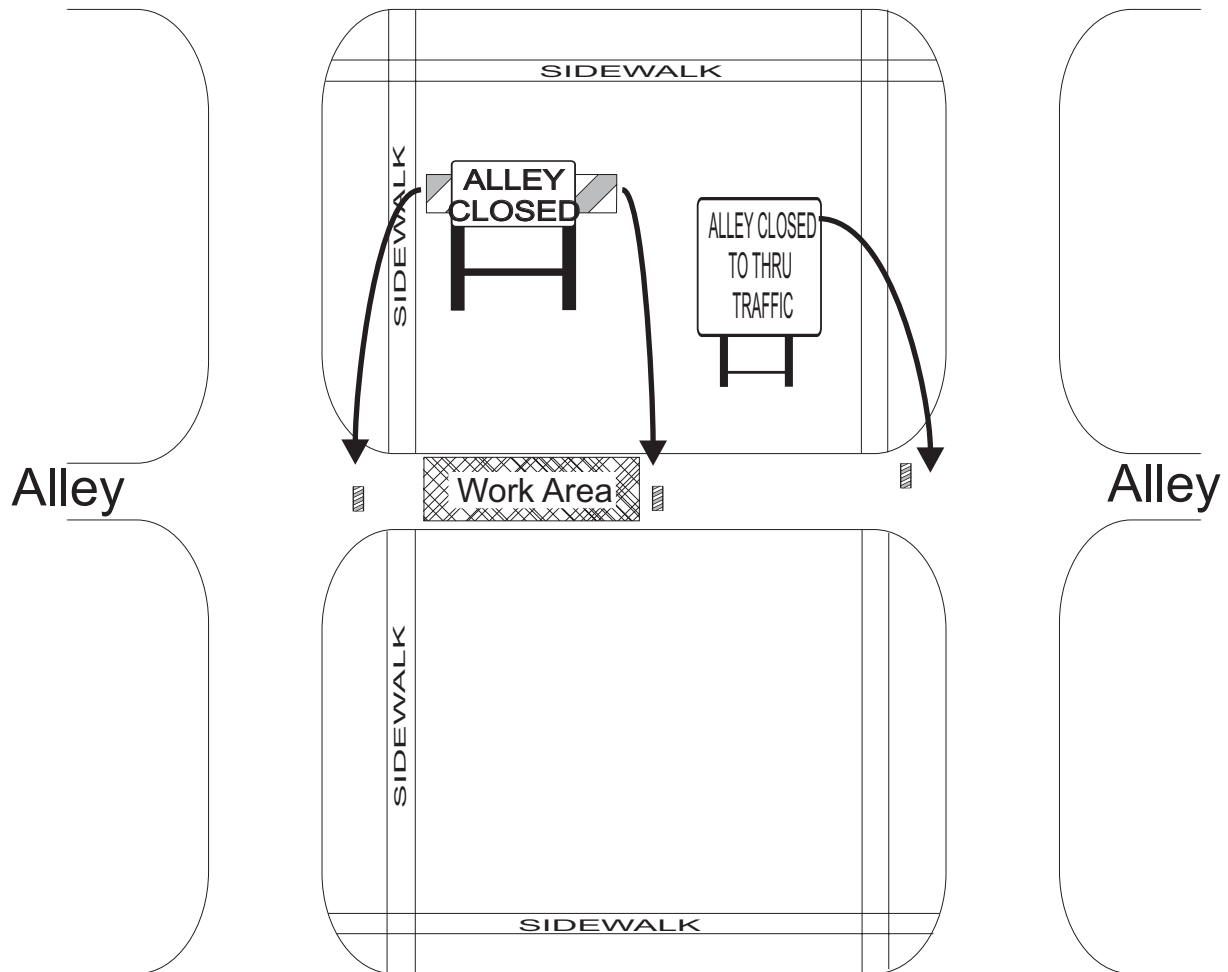


*Contractor must resolve all local access and safety issues.

*Contractor must give notice to all local residents and businesses prior to alley closure.

* All barricades, cones, and signs must be in accordance with the latest edition of the Manual on Uniform Traffic Control Devices.



Indicate North On Plan

Do not block or encumber sidewalks at any time

Drawing Not to Scale



DENVER
PUBLIC WORKS

City and County of Denver
Department of Public Works
Transportation Division

Alley-Partial Closure

All Alleys

DSA Revised 9/28/2018