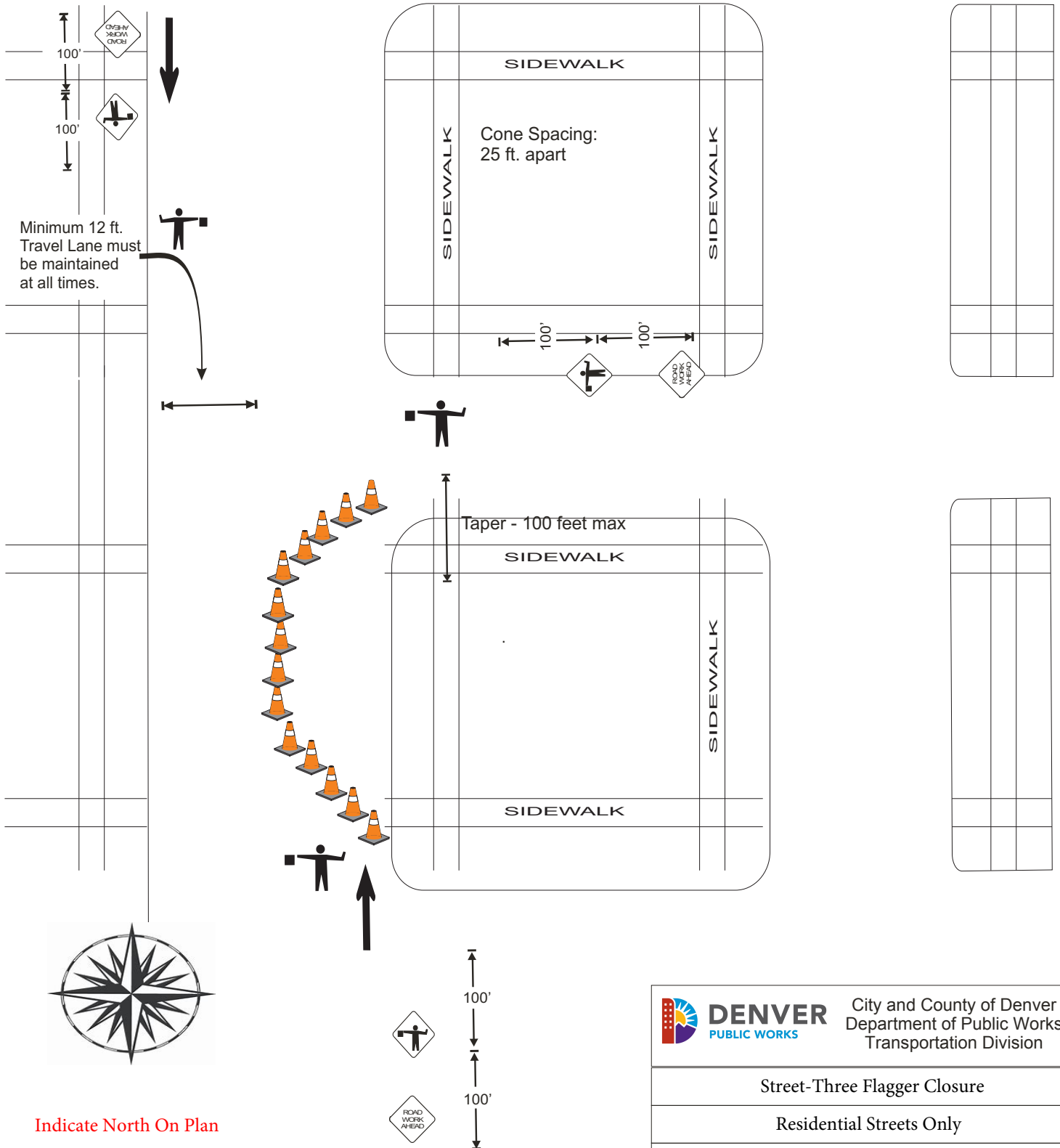


* Contractor must resolve all local access and safety issues.

*All barricades, cones, and signs must be in accordance with the latest edition of the Manual on Uniform Traffic Code Devices (MUTCD).

*Flaggers must follow MUTCD guidelines. Flaggers must use and wear safety equipment as required.

Sign Spacing to be approx. 100 feet apart for low-speed local streets (<35mph)



Indicate North On Plan

Do not block or encumber sidewalks at any time

Drawing Not to Scale