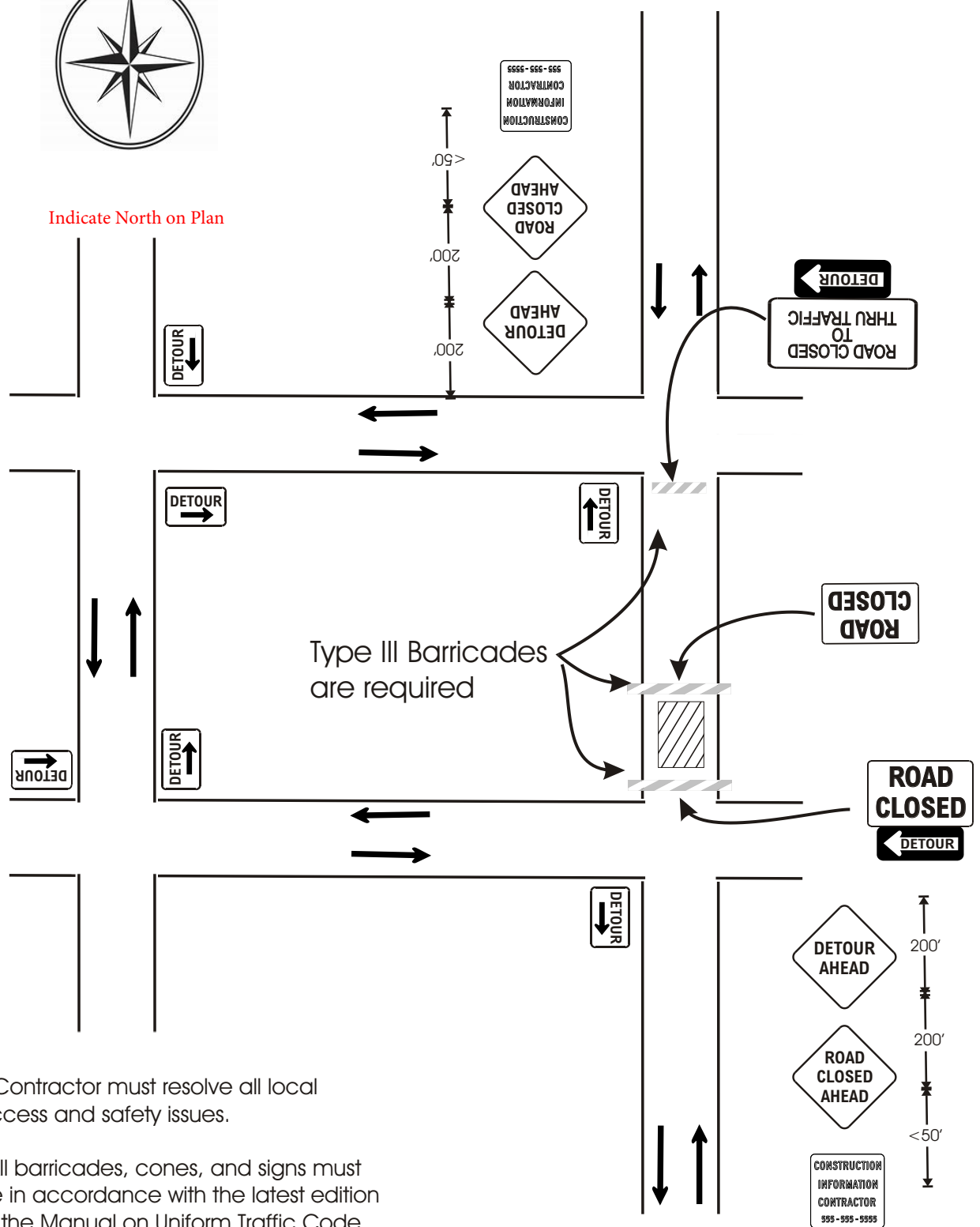




Indicate North on Plan



* Contractor must resolve all local access and safety issues.

*All barricades, cones, and signs must be in accordance with the latest edition of the Manual on Uniform Traffic Code Devices (MUTCD).

*Flaggers must follow MUTCD guidelines. Flaggers must use and wear safety equipment as required.

Drawing Not to Scale

	City and County of Denver Department of Public Works Transportation Division
	Street-Full Closure
	Residential Streets Only
DSA Revised 9/28/2018	