



the ramp terrace

replace failing infrastructure, improve river access, and add key amenities.

- 1) Pedestrian
- 2) Access Path
- 3) Pedestrian Access Path
- 4) Play Area
- 5) River Access
- 6) River Access
- 7) River Access
- 8) River Access
- 9) River Access
- 10) River Access
- 11) River Access
- 12) River Access
- 13) River Access
- 14) River Access
- 15) River Access
- 16) River Access
- 17) River Access
- 18) River Access
- 19) River Access
- 20) River Access

- Don't make too much focus on kayak course. Not enough R.O.I. on a daily basis vs everyday park use.
- I love the children's splash pool
- Too little. Needs more action.
- GO BIG OR GO HOME. This is the birthplace of Denver. Do it right! NOT CHEAP.
- *second that motion.
- *third that motion.
- Kayak is only one component of park, but seems to be getting lions share of funds.
- *agreed.
- Dog days (or hours) Don't ignore fact that dogs/per capita in Denver is highest and leash laws suck.
- *agreed.
- Prefer curved bridges to the straight angular feel of this plan.
- This scheme limits the latent and existing potential of this place.
- Having the splash pool removed from the river sends the message that the river is not fit for interaction. The splash pool needs to use river water and be part of the river experience.
- I think having a playsplash area on top of the hill area would be dangerous to children because that is a high traffic area.
- Using wetlands as a way to improve water quality is a perfect opportunity to show how we can work with nature to improve health and safety instead of a man made structure.

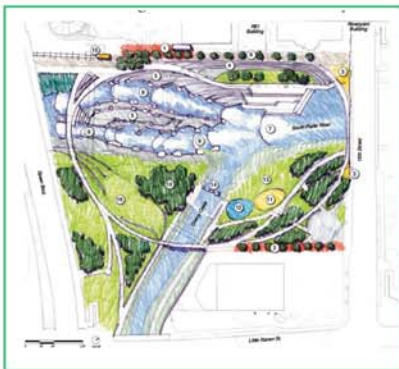


the spine bridge

park elements organized along a central spine.

- 1) Pedestrian
- 2) Access Path
- 3) Pedestrian Access Path
- 4) Play Area
- 5) River Access
- 6) River Access
- 7) River Access
- 8) River Access
- 9) River Access
- 10) River Access
- 11) River Access
- 12) River Access
- 13) River Access
- 14) River Access
- 15) River Access
- 16) River Access
- 17) River Access
- 18) River Access
- 19) River Access
- 20) River Access

- Café is a great idea! Do more to activate edge with retail and restaurants.
- Love the idea of combining in a bridge:
 - safe access for bike and pedestrian
 - good viewing points of the river
 - safe places for kids.
 - recycling of flow.
 - flexible flow potential for optimum paddling pleasure (moveable obstacles).
 - various levels to accommodate levels of activity.
- The spine bridge seems to divide the area in to multiple spaces in a negative way. Bike circulation dominates the scheme instead of passing through.
- This is a key interchange for bicycle paths. It would be great to build separated facilities for bikes moving through park.
- All 3 plans have jog in path @ 15th Street Bridge. Dangerous pinch point.
- Where can concerts/films occur?
- I like connecting (#7) the Regional Trail. This is critical as it is a recreation and commuter trail.
- This is my favorite out of the 3 options. What are the best options for parking?
- I love the trolley plaza with café tables etc.
- Is the beach gone? Too bad.
- My fave! I like that you narrow/deepened the Platte to accommodate flowing seasons. Keep active more months.
- A great opportunity is lost by pulling children out away from the water. Allow opportunities for children and adults to learn the intrinsic value of waterway stewardship by experiencing it (touching, wading).
- I don't like that I need to use No. 13 to cross the river north to south on my bike. I'm afraid bike path would be too close to river and be slippery during the winter.
- I like the amphitheater but don't like the "over" focus of kayak course.
- I love the "bridge" at Millennium Park in Chicago. This could be similar.
- You need to improve bike paths west to east on the South Platte River as it's now just dirt.
- The trolley is a unique feature, yet seems tucked away (hidden) in this plan. Will visitors know it's there without going to the café?
- The hill above the point seems to be forgotten/under-utilized. Is it too steep? I like the terrace idea in the park loop design (16).
- I think the children's spray pool and play area is in a poor spot. Looks out of place.
- Historical context?
- I like the loop bridge above the kayak routes better than having a bridge looking up the river. Could the spine be relocated?
- Hoping the chosen design doesn't require a move-or at least not a substandard move-for the trolley - "Sincerely The Platte Valley Trolley"



the park loop*

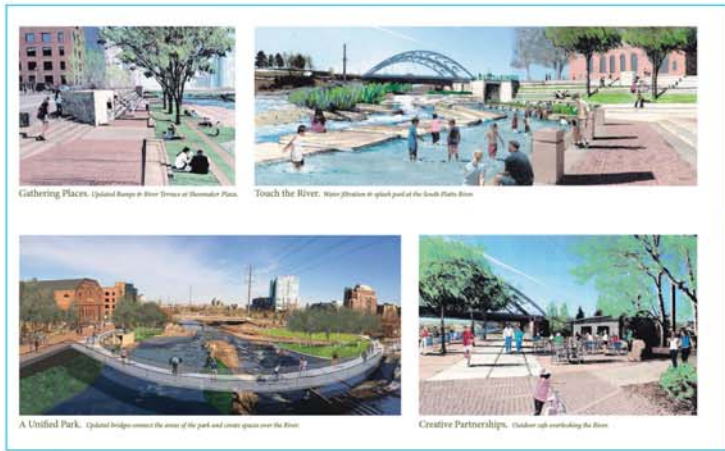
park amenities connected by a signature element.

- 1) Pedestrian
- 2) Access Path
- 3) Pedestrian Access Path
- 4) Play Area
- 5) River Access
- 6) River Access
- 7) River Access
- 8) River Access
- 9) River Access
- 10) River Access
- 11) River Access
- 12) River Access
- 13) River Access
- 14) River Access
- 15) River Access
- 16) River Access
- 17) River Access
- 18) River Access
- 19) River Access
- 20) River Access

- Need more seating by the River. I like the steps leading to the river with green spaces, trees incorporated.
- I like the café/restaurant.
- Love the café area.
- I like the children's play areas in both the loop and the spine.
- I like the working bike path on SE corner away from the edge and lower lawn to river. <- another person's agreed with this comment.
- I like the idea that the bridge is also for viewing.
- Need to address how this park relates to the area immediately north and south of it.
- I like two waterways as depicted in this option.
- The park loop is small-maybe add another play and water park on the other side.
- Like #3 pedestrian bridge @ 15th.
- Is there really enough room for a competition kayak course without jeopardizing the children's daily play?
- The Park loop-love the idea of double runs-one easier, one more challenging and freestyle feature at the bottom.
- I like the double kayak course.
- Walls on Cherry Creek? Remove...Scale them down as they get closer to the Platte
- Would like to see 11, 12, and 13 more thought through/concept designed.
- Use lighting as a design element.
- I like the expanded outdoor "café" and pushed back trolley to creek. More room.
- I like removing the SW Wall (#10) in this design and (#9) in the spine design.
- I love the circular bridge design.
- I am concerned about the safety for the tubers (NOT questioning conflict of use-just safety).
- Verify that 15th street bridge is NOT going to be redone. If it is, needs to be coordinated.
- Allow bikes only on 15th Street Bridge. No bikes in the Confluence Park proper.
- Can the Kayak course be moved 100' upstream to provide more space for activity below?
- I like the circular paths. Would 5, 11, 12, 13 be flooded when the water rises?
- No reference to the birthplace of Denver? Utilize the opportunities for learning historical significance-Make a statement with it.
- Bike racks? More bathrooms? Amenities year round-not only summer. Make pedestrian/bike bridge over South Platte wider.
- Love the circular curved bridge that eliminates some of the sharp edges. I feel the architecture should reflect the pattern of the river.

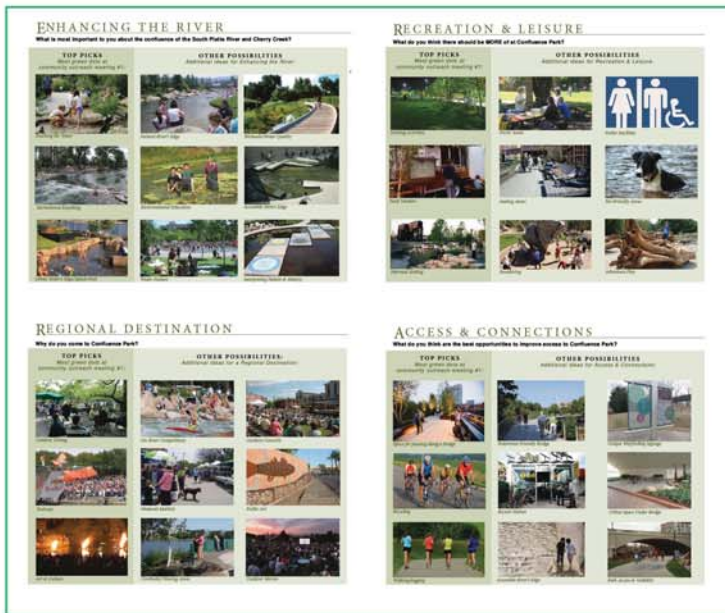
* preferred concept according to public input

summary of comments on vision + precedent boards- public meeting #2



vision

- I think Confluence is a perfect opportunity to incorporate sculpture, murals, local art to showcase Denver's culture particularly its diversity and connection to nature.
- Bridge wide enough to have thru traffic as well as small tables and chairs. Bridge may be a cool interpretive opportunity with some sort of art/signage that tells the story of the river.
- I like the removal of current ramps. Replacement with walkways that replace ramps.
- Is splash pool kid/family and pet friendly?? Are dogs prohibited?
- Lighting could also be used to draw people.
- I like the splash pool area vs. everyone in the water all over the place. Right now on a weekend it looks a bit "ghetto".
- Policies for pets need to be developed.
- Lighting in river like done in Korea?
- Bleacher steps at Shoemaker plaza are great.
- Water filtration splash pool is a great idea. Wonderful image.
- Outdoor cafe is a must.
- I see a real problem with the city maintain turf areas to provide long term enjoyment. Should sod areas be replaced with tables, chairs, umbrellas and trees??



precedents

- Enhancing the River:
 - I like the splash pool and sitting edges
- Recreation and Leisure:
 - Yes! Dog friendly areas would be awesome
 - More bike racks
- Access and Connections
 - Pedestrian friendly is good but keep bridge bicycle friendly
- Regional Destination:
 - Amenities year round, not just for summer