

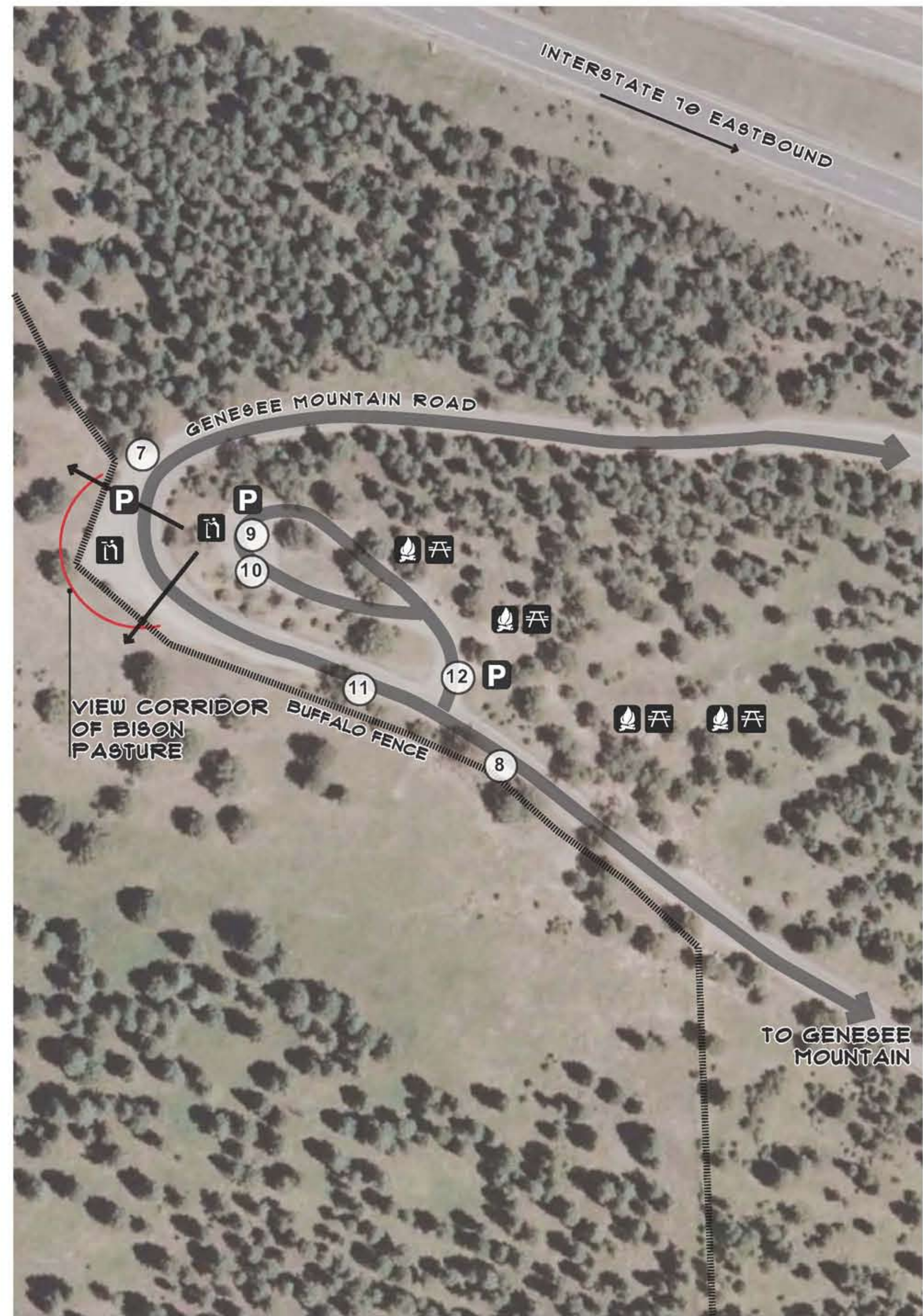
# Existing Conditions - Day Use Areas

## Rainbow Hill Rd.

- P** PARKING
- TH** TRAILHEAD
- BS** BUS STOP
- RS** RV CAMPING
- DS** DUMP STATION
- CS** CAMPSITE
- HT** HIKING TRAIL
- SGT** SELF GUIDED TRAIL
- OV** OVERLOOK
- OC** OFFICE/CHECK IN
- PT** PICNIC TABLE
- FR** FIRE RING/GRILL
- S** SHELTER
- ST** SHELTER W/ TABLES
- FR** FLUSH RESTROOMS
- RS** RESTROOM AND SHOWER
- PT** PIT TOILET
- G** GATE
- FB** FOOT BRIDGE
- EB** EXISTING BUILDING
- S** SHELTER



## Genesee Mountain Rd.



1. VIEW OF PARKING AREA LOOKING SOUTH



2. VIEW OF PARKING AREA LOOKING EAST



3. EXISTING PIT TOILET



4. PEOPLE PICNICKING AT DAY USE AREA



5. VIEW OF DAY USE AREA LOOKING SOUTH



6. ACCESS ROAD LOOKING NORTH



7. GENESSEE PARK SIGN ALONG GENESSEE MTN. ROAD



8. BISON FENCE LOOKING WEST TO TOILET



9. TURNAROUND AREA LOOKING EAST



10. VIEW OF BISON PASTURE LOOKING WEST FROM PARKING AREA



11. VIEW OF BISON PASTURE LOOKING WEST



12. PARKING AREA AND PEOPLE PICNICKING

### EXISTING SITE USE SUMMARY

- EXISTING BISON PASTURE VIEWING AREA AT GENESSEE MOUNTAIN ROAD
- DAY USE FACILITIES (PICNIC TABLES, GRILLS, PIT TOILETS ETC.)
- EXISTING PARK ACCESS ROAD AT RAINBOW HILLS ROAD

### YOUR INITIAL THOUGHTS/IDEAS FOR

### POTENTIAL IMPROVEMENTS

