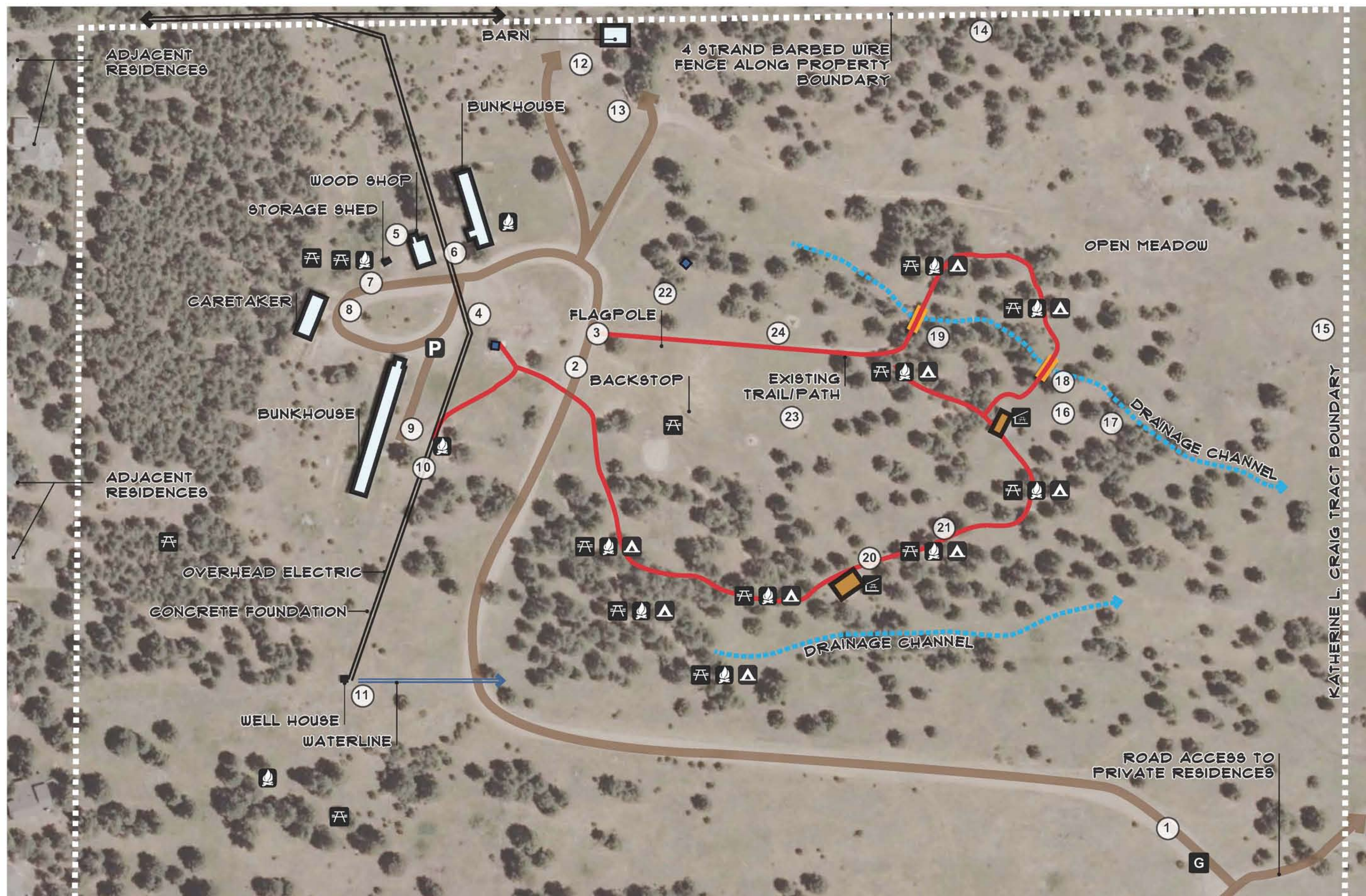


# Existing Conditions - Katherine L. Craig Tract

- P** PARKING
- TH** TRAILHEAD
- BS** BUS STOP
- RV** RV CAMPING
- DS** DUMP STATION
- ▲** CAMPSITE
- ▲** HIKING TRAIL
- ▲** SELF GUIDED TRAIL
- OVERLOOK
- OFFICE/CHECK IN
- PICNIC TABLE
- FIRE RING/GRILL
- SHELTER
- SHELTER W/ TABLES
- FLUSH RESTROOMS
- RESTROOM AND SHOWER
- PIT TOILET
- G** GATE
- FOOT BRIDGE
- EXISTING BUILDING
- SHELTER



1. ENTRY ROAD LOOKING WEST



2. YARD HYDRANT



3. STONE LINED PATH LEADING TO CAMPING AREA



4. EXISTING VAULT TOILET, TRANSFORMER, + DUMPSTER LOOKING SOUTH



5. WOOD SHOP LOOKING EAST



6. BUNKHOUSE LOOKING NORTH



7. EXISTING STORAGE SHED



8. WOOD SHOP LOOKING NORTH



9. EXISTING BUNKHOUSE



10. GROUP FIRE RING OUTSIDE BUNKHOUSE



11. WELL HOUSE



12. EXISTING BARN



13. EXISTING CONCRETE VEHICLE RAMP NEAR BARN



14. VIEW LOOKING NORTH ALONG PROPERTY BOUNDARY



15. VIEW OF MEADOW LOOKING NORTHWEST



16. VIEW OF SHELTERS LOOKING WEST



17. DRAINAGE THROUGH CAMPGROUND



18. PEDESTRIAN BRIDGE OVER DRAINAGE



19. PEDESTRIAN BRIDGE OVER DRAINAGE



20. EXISTING SHELTER



21. TYPICAL CAMPSITE



22. VAULT TOILET



23. EXISTING PLAY EQUIPMENT



24. EXISTING PLAY EQUIPMENT

## EXISTING SITE USE SUMMARY

- CAMPING FOR DENVER PARKS AND RECREATION MANAGED PROGRAMMING, INCLUDING WOW PROGRAM AND AMERICORP
- PREVIOUSLY MANAGED AS A GIRL SCOUT CAMP
- CARETAKERS RESIDENCE
- NOT OPEN FOR PUBLIC ACCESS

## YOUR INITIAL THOUGHTS/IDEAS FOR POTENTIAL IMPROVEMENTS



# Genesee Park and Katherine L. Craig Tract

July, 2012

## Park and Trail Improvement Plan

