

Existing Conditions - Stapleton Drive Trailhead



1. GENESSEE PARK-STAPLETON DRIVE SIGNAGE



2. BISON FENCE GATE AT STAPLETON AND I-70 TRAIL



3. EXISTING PICNIC TABLE



4. LOOKING WEST AT WINTER SEASON PARKING



- PARKING
- TRAILHEAD
- BUS STOP
- RV CAMPING
- DUMP STATION
- CAMPSITE
- HIKING TRAIL
- SELF GUIDED TRAIL
- OVERLOOK
- OFFICE/CHECK IN
- PICNIC TABLE
- FIRE RING/GRILL
- SHELTER
- SHELTER W/ TABLES
- FLUSH RESTROOMS
- RESTROOM AND SHOWER
- PIT TOILET
- GATE
- FOOT BRIDGE
- EXISTING BUILDING
- SHELTER



5. ROAD CLOSURE SIGNAGE



6. LOOKING EAST TOWARD WINTER SEASON PARKING

EXISTING SITE USE SUMMARY

- TRAILHEAD/PARKING AREA FOR BRAILLE, BEAVER BROOK, AND CHAVEZ TRAILS
- CHALLENGE COURSE ACCESS ROAD
- WINTER PARKING AREA
- BISON VIEWING ACCESS AT STAPLETON DR.
- PICNIC TABLES, PIT TOILETS AND SIGNAGE

YOUR INITIAL THOUGHTS/IDEAS FOR POTENTIAL IMPROVEMENTS

-
-
-
-
-
-

-
-
-
-
-
-

Existing Conditions - Beaver Brook, Chavez and Braille Trail



1. EXISTING PARKING CONDITIONS



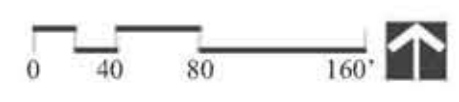
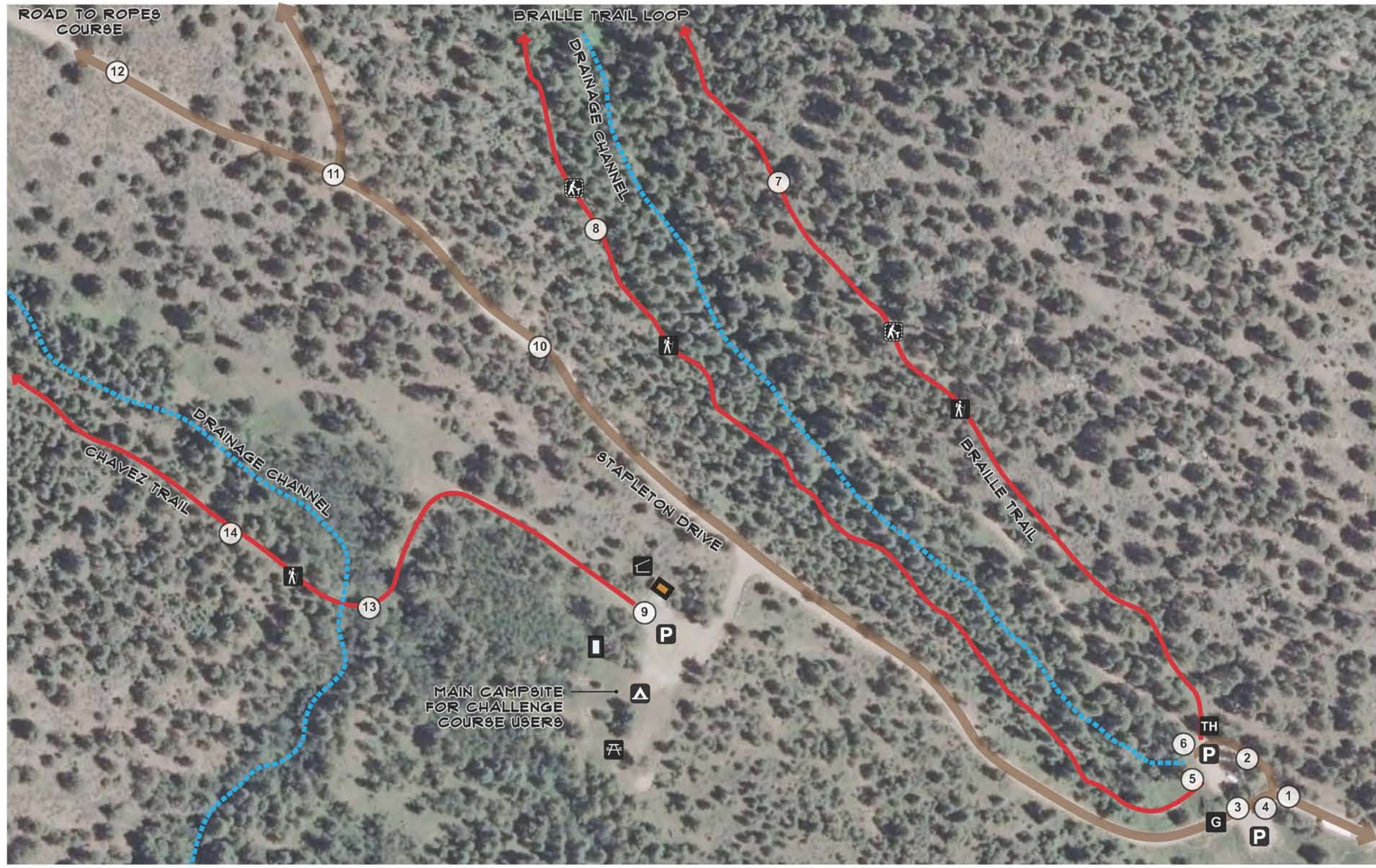
2. LOWER TRAILHEAD PARKING



3. CHAVEZ TRAIL GATE + ROAD TO CHALLENGE COURSE



4. UPPER TRAILHEAD PARKING



5. BENCH AT THE BEGINNING OF THE BRAILLE TRAIL



6. LOOKING SOUTHWEST FROM BB TRAILHEAD

Genesee Park and Katherine L. Craig Tract

July, 2012

Park and Trail Improvement Plan

