



PROJECT OVERVIEW

March 2019

DENVER MOVES: BROADWAY

Since 2015, Denver Public Works has been studying Broadway to make the corridor safer for bicyclists, drivers, pedestrians and transit riders.

In 2019, after extensive community input and technical planning, the City is designing a more multi-modal Broadway:

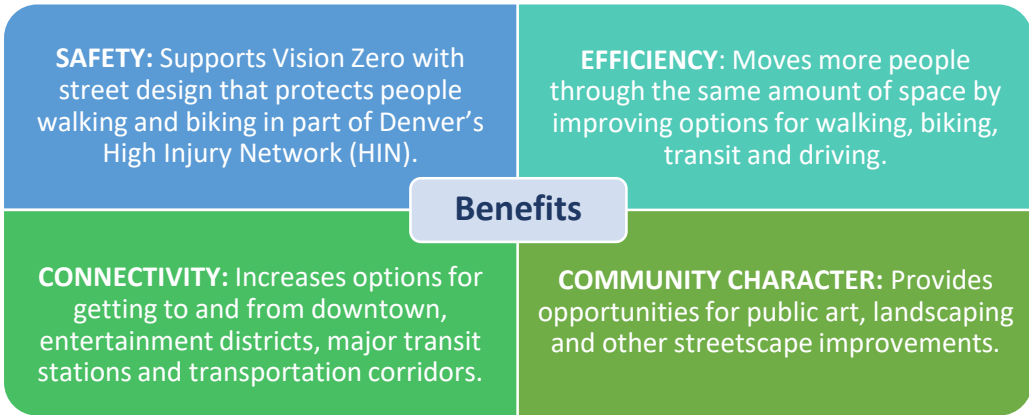
- **Broadway South Segment:** Detailed design of construction-ready plans from Cherry Creek Trail south to Broadway Station.
- **Broadway North Segment:** Conceptual design from Cherry Creek Trail north to Civic Center Station.

The voter-approved Elevate Denver Bond Program invests \$12 million toward the construction of Denver Moves: Broadway's South Segment.

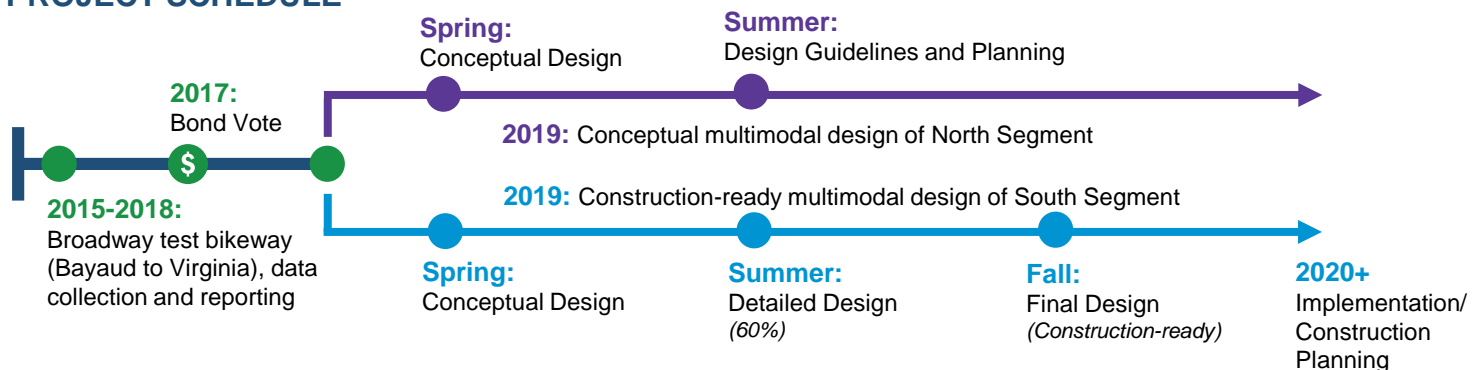
GOALS AND BENEFITS

Creating vibrant places where people of all ages and abilities feel comfortable using any mode of travel is central to the project's goals:

- Everyone arrives safely
- Community and business collaboration
- New and enhanced mobility options for everyone



PROJECT SCHEDULE



Get involved, learn more and sign-up for project updates at: DenverMovesBroadway.com and www.denvergov.org/ElevateDenver