

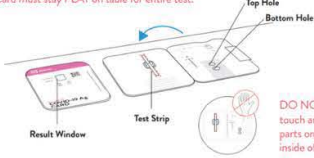
Rapid COVID-19 BinaxNOW Test Instructions

Step 1. Wash your hands. It's recommended you wear gloves (not included)

Step 2.

Open Card

⊘ Card must stay FLAT on table for entire test.



DO NOT touch any parts on inside of card.

Step 3.

Apply Fluid to Top Hole

- A. Remove dropper bottle cap. B. Hold dropper bottle straight over TOP HOLE, not at an angle. C. Put 6 DROPS into TOP HOLE. Do not touch card with tip.



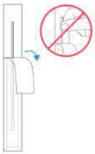
Note: False negative results may occur if less than 6 drops of fluid is used.

Step 4.

Open Swab

⊘ Keep fingers away from swab end.

- A. Open swab package at stick end.



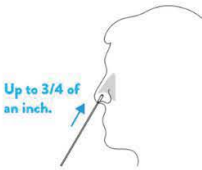
- B. Take swab out.



Step 5.

Swab Left Nostril

- A. Insert the entire absorbent tip of the swab (usually 1/2 to 3/4 of an inch) into left nostril. B. Firmly brush against insides of nostril in a circular motion 5 times or more for at least 15 seconds.



Step 6.

Swab Right Nostril

- A. Remove swab and insert it into right nostril. B. Firmly brush against insides of nostril in a circular motion 5 times or more for at least 15 seconds.



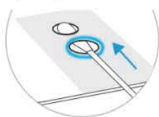
Note: False negative results may occur if the nasal swab is not properly collected.

Step 7.

Insert Swab Into Bottom Hole

⊘ Keep card FLAT on table.

Insert swab tip into BOTTOM HOLE and firmly push up until tip fills TOP HOLE.

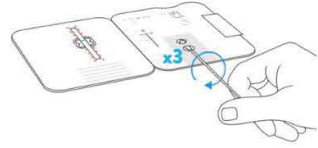


Step 8.

Turn Swab 3 Times

⊘ Keep card FLAT on table.

Turn swab to right 3 times in card and leave it in place.



Note: False negative results can occur if the sample swab is not turned prior to closing the card.

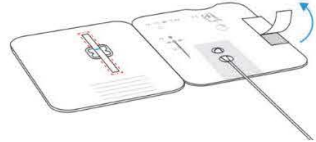
Step 9.

Peel Swab

⊘ DO NOT remove swab.

⊘ Keep card FLAT on table.

Keep swab in place. Peel adhesive liner off.



Step 10.

Close Card and Seal

⊘ DO NOT remove swab.

⊘ Keep card FLAT on table.

Close left side of card over swab to seal it. Keep card face up on table.



Step 11.

Wait 15 Minutes

⊘ DO NOT disturb card during this time.



15:00

Note: False results can occur if the card is disturbed/moved or test results are read before 15 minutes.

Step 12.

A positive test will show 2 lines

A negative test will show 1 line

If you received a test from a Denver Recreation Center, please use by February 14, 2022



DENVER
THE MILE HIGH CITY