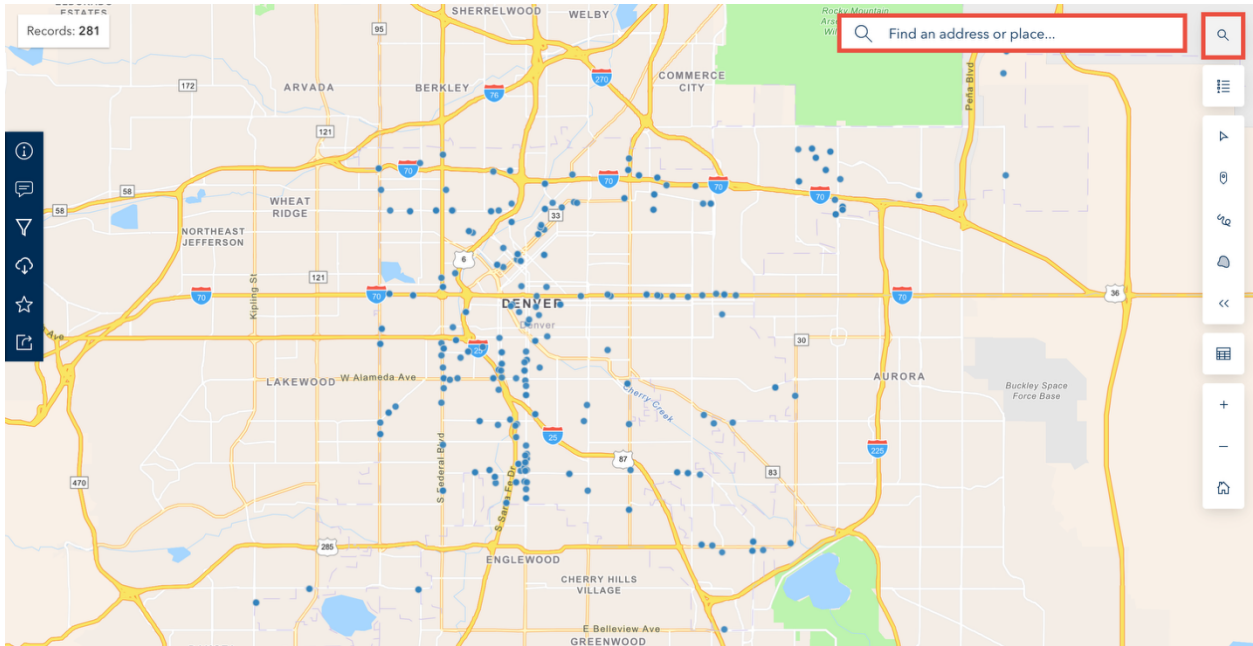
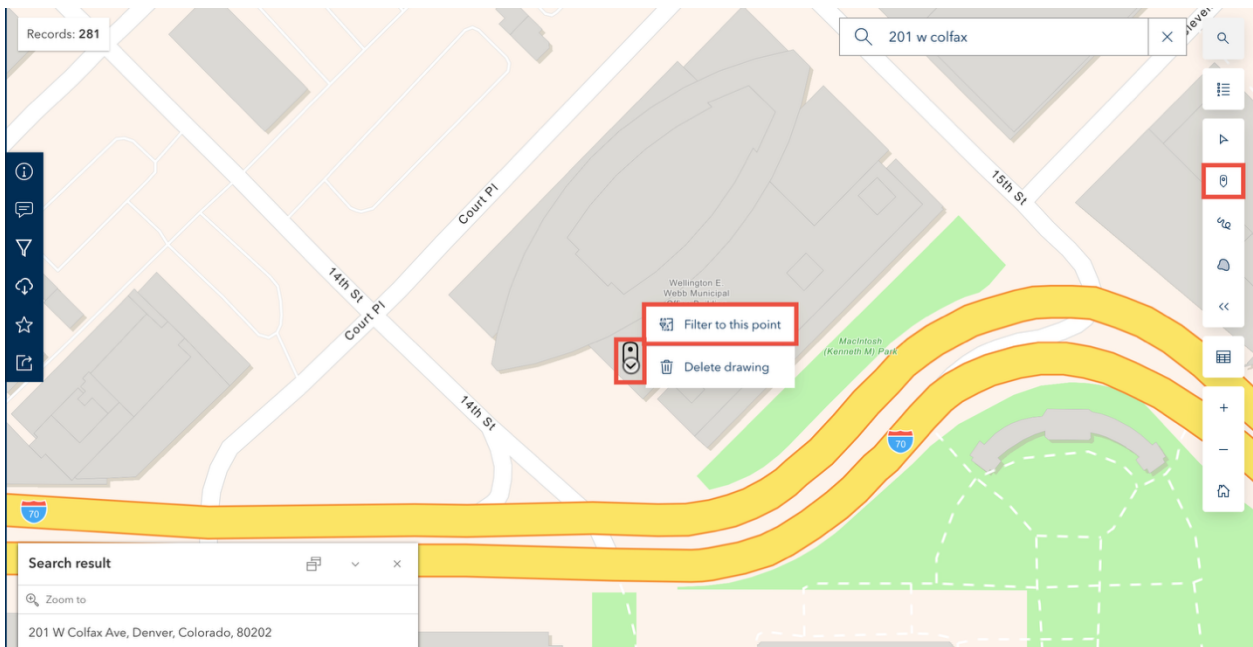


Guide for displaying Designated Area on Marijuana Facility Map

1. Go to the [GIS Map](#).
2. Click on the magnifying glass on the upper righthand corner.

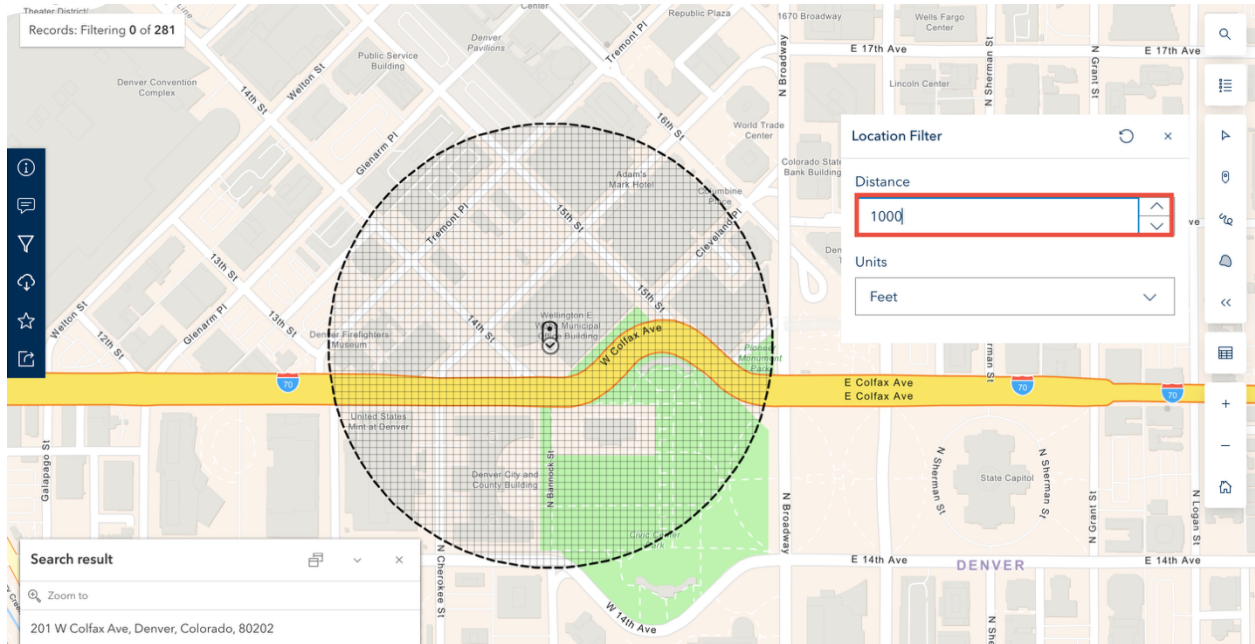


3. Enter the street address in the box and select the correct entry below.
4. An address dot will appear on the map where the address is located.
5. On the righthand side, click on the **Drop a point** option



6. Put the point on the address dot for the address you entered previously.

- Click twice and on the pop up click **Filter to this point**.
- Under **Location Filter**, enter "1000" under **Distance** and select "Feet" under **Units**.



- Use your screenshot tool to generate an image that includes the entire radius
- Once you have created the correct radius, click on the **Download** symbol on the lefthand side.
- A menu of format options will appear.
- Be sure to switch the Toggle Filters button on.
- Select Download under CSV or Excel to export the list of overlapping Marijuana Facilities.

