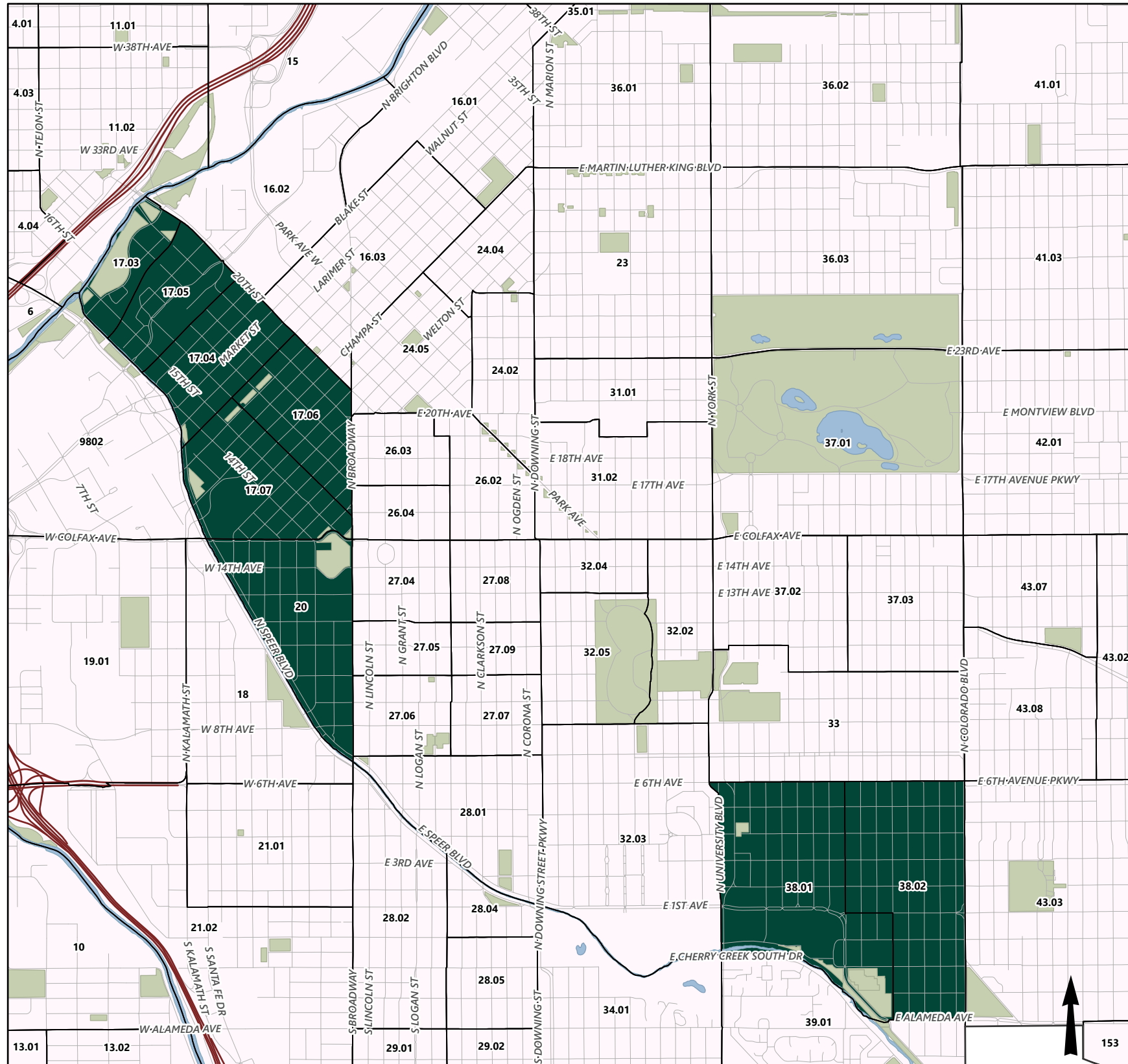




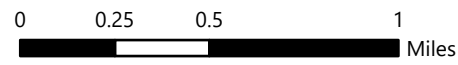
Median Land Value Per Square Foot by Census Tract

DENVER
THE MILE HIGH CITY



Median Land Value Per Square Foot by Census Tract

- Five times or greater than the Citywide median land value/sq ft (\$169.5)
- All other values



Census Tracts are labeled by name, which can be used to locate the actual median land value per square foot in the above table.

Census Tract	Median Land Value Per Square Foot(\$)
Census Tract 17.06	350.1
Census Tract 17.03	350
Census Tract 17.07	349.8
Census Tract 17.04	325.2
Census Tract 17.05	299.3
Census Tract 20	249.3
Census Tract 38.01	202.3
Census Tract 38.02	197.9
Census Tract 26.03	151.9
Census Tract 26.04	151.6
Census Tract 16.02	146.2
Census Tract 34.02	142.8
Census Tract 16.01	125.8
Census Tract 34.01	123.8
Census Tract 31.02	120.3
Census Tract 26.02	116.3
Census Tract 4.04	114.2
Census Tract 11.02	113.3
Census Tract 29.02	112.7
Census Tract 28.04	109.1
Census Tract 32.03	99.4
Census Tract 16.03	97.3
Census Tract 30.05	93.9
Census Tract 27.04	92.8
Census Tract 30.06	91.9
Census Tract 24.04	91.7
Census Tract 39.01	91.4
Census Tract 43.03	91.3
Census Tract 4.03	90.6
Census Tract 5.03	90
Census Tract 27.06	90
Census Tract 40.06	89.3
Census Tract 24.05	86.8
Census Tract 33	85.7
Census Tract 28.02	85.5
Census Tract 18	83.7
Census Tract 6	81.6
Census Tract 37.01	80.9
Census Tract 39.02	80.6
Census Tract 28.05	80.5
Census Tract 21.01	79.8
Census Tract 11.01	79.3
Census Tract 3.03	77.9
Census Tract 23	77.7
Census Tract 24.02	77.3

Census Tract	Median Land Value Per Square Foot(\$)
Census Tract 37.02	76.8
Census Tract 37.03	76.6
Census Tract 5.04	75.8
Census Tract 32.02	75.8
Census Tract 3.02	75.5
Census Tract 42.01	75.3
Census Tract 27.08	74.9
Census Tract 27.05	74.8
Census Tract 21.02	72.9
Census Tract 27.09	72.3
Census Tract 5.01	71.9
Census Tract 7.05	70.3
Census Tract 30.03	70
Census Tract 1.02	69.7
Census Tract 31.01	69.7
Census Tract 41.03	69.5
Census Tract 29.01	68.2
Census Tract 7.06	68.1
Census Tract 3.01	67.6
Census Tract 30.02	67.5
Census Tract 19.01	67
Census Tract 7.03	65.3
Census Tract 32.05	65.1
Census Tract 32.04	62.8
Census Tract 40.02	61.1
Census Tract 43.07	59.9
Census Tract 43.02	59.6
Census Tract 30.04	59.4
Census Tract 27.07	58
Census Tract 43.10	57.2
Census Tract 14.03	55.4
Census Tract 43.09	55.1
Census Tract 7.04	54.9
Census Tract 154	54.9
Census Tract 43.08	54.8
Census Tract 36.01	53.9
Census Tract 28.01	53.3
Census Tract 43.06	52.9
Census Tract 40.05	52.6
Census Tract 42.02	52
Census Tract 53	50.8
Census Tract 36.03	48.5
Census Tract 4.01	45.8
Census Tract 9802	45.7
Census Tract 67.01	45

Census Tract	Median Land Value Per Square Foot(\$)
Census Tract 2.02	43.7
Census Tract 50.03	40.5
Census Tract 36.02	40.2
Census Tract 40.03	40.2
Census Tract 155	38.7
Census Tract 9.04	36.3
Census Tract 41.11	36.1
Census Tract 41.09	34
Census Tract 41.08	33.4
Census Tract 41.10	33
Census Tract 41.12	32.8
Census Tract 51.02	32.3
Census Tract 41.04	31.8
Census Tract 44.07	31.4
Census Tract 44.06	30.6
Census Tract 8	30.2
Census Tract 2.01	30
Census Tract 50.01	29.4
Census Tract 153	28.8
Census Tract 13.01	26.6
Census Tract 52	25.3
Census Tract 13.02	25.1
Census Tract 51.04	24.9
Census Tract 35.01	24.7
Census Tract 69.03	23.9
Census Tract 69.02	23.1
Census Tract 44.03	22.7
Census Tract 9.05	22.5
Census Tract 41.13	20.2
Census Tract 15	20
Census Tract 41.01	19.9
Census Tract 41.02	19.8
Census Tract 44.04	19.8
Census Tract 68.12	19.5
Census Tract 68.15	19.1
Census Tract 45.04	18.7
Census Tract 10	18.6
Census Tract 68.18	18.6
Census Tract 50.04	18.6
Census Tract 45.05	18.5
Census Tract 45.03	18.3
Census Tract 68.14	18.1
Census Tract 40.04	17.7
Census Tract 45.06	17.6

Census Tract	Median Land Value Per Square Foot(\$)
Census Tract 68.16	17.1
Census Tract 68.10	16.4
Census Tract 9.03	16
Census Tract 9.02	15.9
Census Tract 14.01	15.9
Census Tract 48.01	15.8
Census Tract 157	15.2
Census Tract 35.02	14.9
Census Tract 47	14.5
Census Tract 68.13	14.4
Census Tract 46.01	14.4
Census Tract 9801	14.3
Census Tract 46.02	14.1
Census Tract 68.04	14
Census Tract 70.13	13.3
Census Tract 83.89	12.6
Census Tract 119.03	12.6
Census Tract 119.02	12.4
Census Tract 14.02	12
Census Tract 83.87	11.9
Census Tract 70.06	11.9
Census Tract 83.90	11.8
Census Tract 83.91	11.6
Census Tract 120.01	11.2
Census Tract 46.03	11.1
Census Tract 55.03	11.1
Census Tract 120.10	10.9
Census Tract 83.88	10.9
Census Tract 120.16	10.7
Census Tract 120.15	10.7
Census Tract 83.86	9.7
Census Tract 83.12	9.5
Census Tract 70.37	9.5
Census Tract 70.88	9.2
Census Tract 158	9.1
Census Tract 156	8.7
Census Tract 83.05	8.3
Census Tract 83.06	7.7
Census Tract 83.06	7.5
Census Tract 70.90	7
Census Tract 70.91	5.5
Census Tract 9800.01	0.006



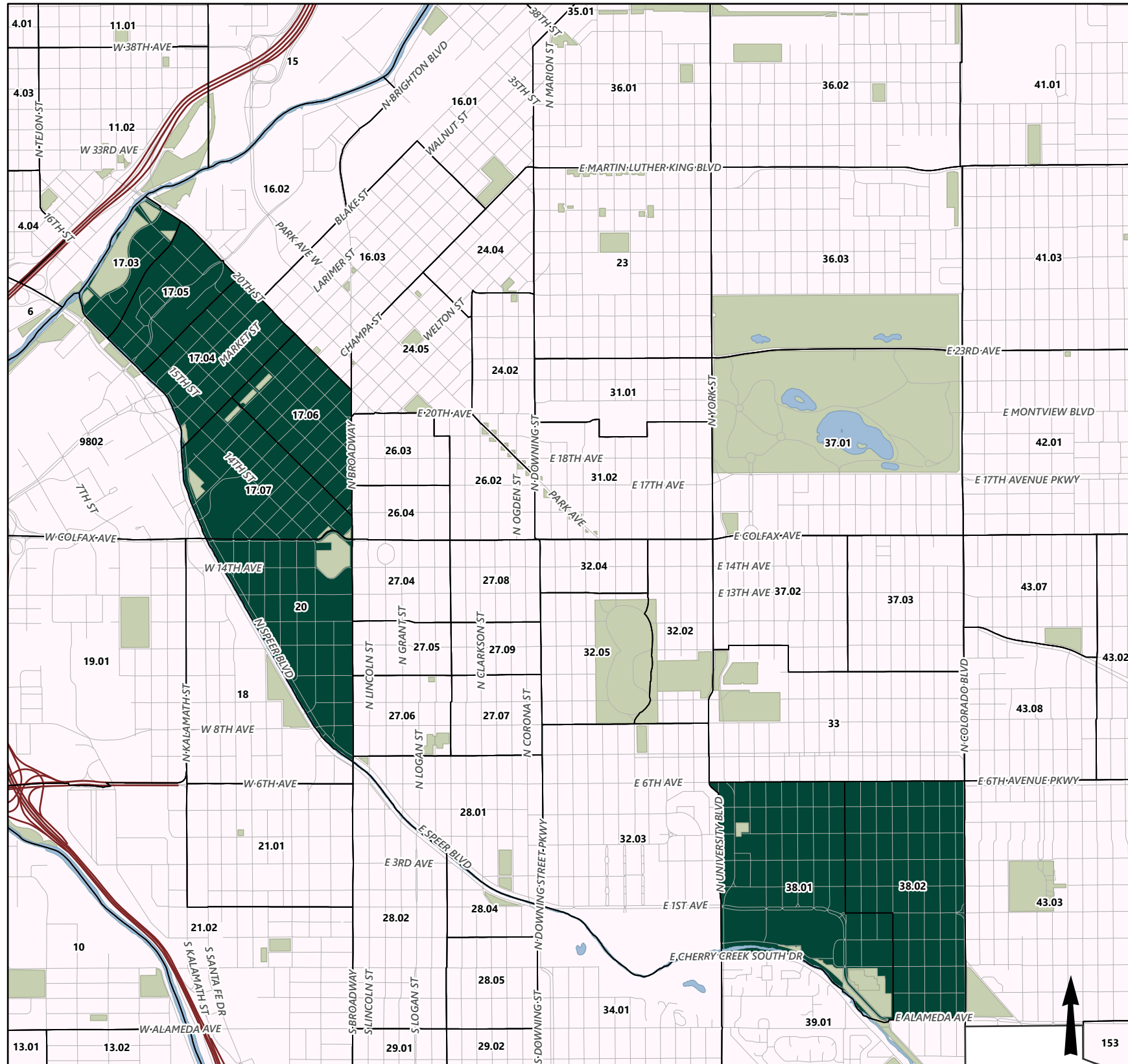
Citywide Median Land Value Per Square Foot: \$33.9

For the purpose of this analysis, parcels with an appraised land value of \$0 were removed. Stacked parcels were dissolved and the appraised land value of each unit or structure was summed, resulting in an appraised land value for the entire parcel. This value was divided by the area of the parcel.



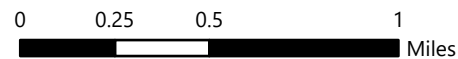
Median Land Value Per Square Foot by Census Tract

DENVER
THE MILE HIGH CITY



Median Land Value Per Square Foot by Census Tract

Five times or greater than the Citywide median land value/sq ft (\$169.5)
All other values



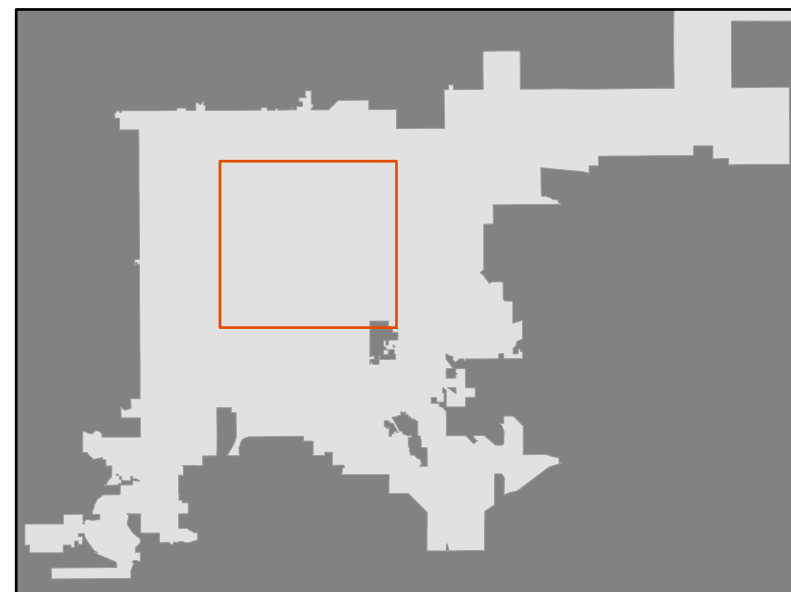
Census Tracts are labeled by name, which can be used to locate the actual median land value per square foot in the above table.

Census Tract	Median Land Value Per Square Foot(\$)
Census Tract 17.06	350.1
Census Tract 17.03	350
Census Tract 17.07	349.8
Census Tract 17.04	325.2
Census Tract 17.05	299.3
Census Tract 20	249.3
Census Tract 38.01	202.3
Census Tract 38.02	197.9
Census Tract 26.03	151.9
Census Tract 26.04	151.6
Census Tract 16.02	146.2
Census Tract 34.02	142.8
Census Tract 16.01	125.8
Census Tract 34.01	123.8
Census Tract 31.02	120.3
Census Tract 26.02	116.3
Census Tract 4.04	114.2
Census Tract 11.02	113.3
Census Tract 29.02	112.7
Census Tract 28.04	109.1
Census Tract 32.03	99.4
Census Tract 16.03	97.3
Census Tract 30.05	93.9
Census Tract 27.04	92.8
Census Tract 30.06	91.9
Census Tract 24.04	91.7
Census Tract 39.01	91.4
Census Tract 43.03	91.3
Census Tract 4.03	90.6
Census Tract 5.03	90
Census Tract 27.06	90
Census Tract 40.06	89.3
Census Tract 24.05	86.8
Census Tract 33	85.7
Census Tract 28.02	85.5
Census Tract 18	83.7
Census Tract 6	81.6
Census Tract 37.01	80.9
Census Tract 39.02	80.6
Census Tract 28.05	80.5
Census Tract 21.01	79.8
Census Tract 11.01	79.3
Census Tract 3.03	77.9
Census Tract 23	77.7
Census Tract 24.02	77.3

Census Tract	Median Land Value Per Square Foot(\$)
Census Tract 37.02	76.8
Census Tract 37.03	76.6
Census Tract 5.04	75.8
Census Tract 32.02	75.8
Census Tract 3.02	75.5
Census Tract 42.01	75.3
Census Tract 27.08	74.9
Census Tract 27.05	74.8
Census Tract 21.02	72.9
Census Tract 27.09	72.3
Census Tract 5.01	71.9
Census Tract 7.05	70.3
Census Tract 30.03	70
Census Tract 1.02	69.7
Census Tract 31.01	69.7
Census Tract 41.03	69.5
Census Tract 29.01	68.2
Census Tract 7.06	68.1
Census Tract 3.01	67.6
Census Tract 30.02	67.5
Census Tract 19.01	67
Census Tract 7.03	65.3
Census Tract 32.05	65.1
Census Tract 32.04	62.8
Census Tract 40.02	61.1
Census Tract 43.07	59.9
Census Tract 43.02	59.6
Census Tract 30.04	59.4
Census Tract 27.07	58
Census Tract 43.10	57.2
Census Tract 14.03	55.4
Census Tract 43.09	55.1
Census Tract 7.04	54.9
Census Tract 154	54.9
Census Tract 43.08	54.8
Census Tract 36.01	53.9
Census Tract 28.01	53.3
Census Tract 43.06	52.9
Census Tract 40.05	52.6
Census Tract 42.02	52
Census Tract 53	50.8
Census Tract 36.03	48.5
Census Tract 4.01	45.8
Census Tract 9802	45.7
Census Tract 67.01	45

Census Tract	Median Land Value Per Square Foot(\$)
Census Tract 2.02	43.7
Census Tract 50.03	40.5
Census Tract 36.02	40.2
Census Tract 40.03	40.2
Census Tract 155	38.7
Census Tract 9.04	36.3
Census Tract 41.11	36.1
Census Tract 41.09	34
Census Tract 41.08	33.4
Census Tract 41.10	33
Census Tract 41.12	32.8
Census Tract 51.02	32.3
Census Tract 41.04	31.8
Census Tract 44.07	31.4
Census Tract 44.06	30.6
Census Tract 8	30.2
Census Tract 2.01	30
Census Tract 50.01	29.4
Census Tract 153	28.8
Census Tract 13.01	26.6
Census Tract 52	25.3
Census Tract 13.02	25.1
Census Tract 51.04	24.9
Census Tract 35.01	24.7
Census Tract 69.03	23.9
Census Tract 69.02	23.1
Census Tract 44.03	22.7
Census Tract 9.05	22.5
Census Tract 41.13	20.2
Census Tract 15	20
Census Tract 41.01	19.9
Census Tract 41.02	19.8
Census Tract 44.04	19.8
Census Tract 68.12	19.5
Census Tract 68.15	19.1
Census Tract 45.04	18.7
Census Tract 10	18.6
Census Tract 68.18	18.6
Census Tract 50.04	18.6
Census Tract 45.05	18.5
Census Tract 45.03	18.3
Census Tract 68.14	18.1
Census Tract 40.04	17.7
Census Tract 45.06	17.6

Census Tract	Median Land Value Per Square Foot(\$)
Census Tract 68.16	17.1
Census Tract 68.10	16.4
Census Tract 9.03	16
Census Tract 9.02	15.9
Census Tract 14.01	15.9
Census Tract 48.01	15.8
Census Tract 157	15.2
Census Tract 35.02	14.9
Census Tract 47	14.5
Census Tract 68.13	14.4
Census Tract 46.01	14.4
Census Tract 9801	14.3
Census Tract 46.02	14.1
Census Tract 68.04	14
Census Tract 70.13	13.3
Census Tract 83.89	12.6
Census Tract 119.03	12.6
Census Tract 119.02	12.4
Census Tract 14.02	12
Census Tract 83.87	11.9
Census Tract 70.06	11.9
Census Tract 83.90	11.8
Census Tract 83.91	11.6
Census Tract 120.01	11.2
Census Tract 46.03	11.1
Census Tract 55.03	11.1
Census Tract 120.10	10.9
Census Tract 83.88	10.9
Census Tract 120.16	10.7
Census Tract 120.15	10.7
Census Tract 83.86	9.7
Census Tract 83.12	9.5
Census Tract 70.37	9.5
Census Tract 70.88	9.2
Census Tract 158	9.1
Census Tract 156	8.7
Census Tract 83.05	8.3
Census Tract 83.04	7.7
Census Tract 83.06	7.5
Census Tract 70.90	7
Census Tract 70.91	5.5
Census Tract 9800.01	0.006



Citywide Median Land Value Per Square Foot: \$33.9

For the purpose of this analysis, parcels with an appraised land value of \$0 were removed. Stacked parcels were dissolved and the appraised land value of each unit or structure was summed, resulting in an appraised land value for the entire parcel. This value was divided by the area of the parcel.