

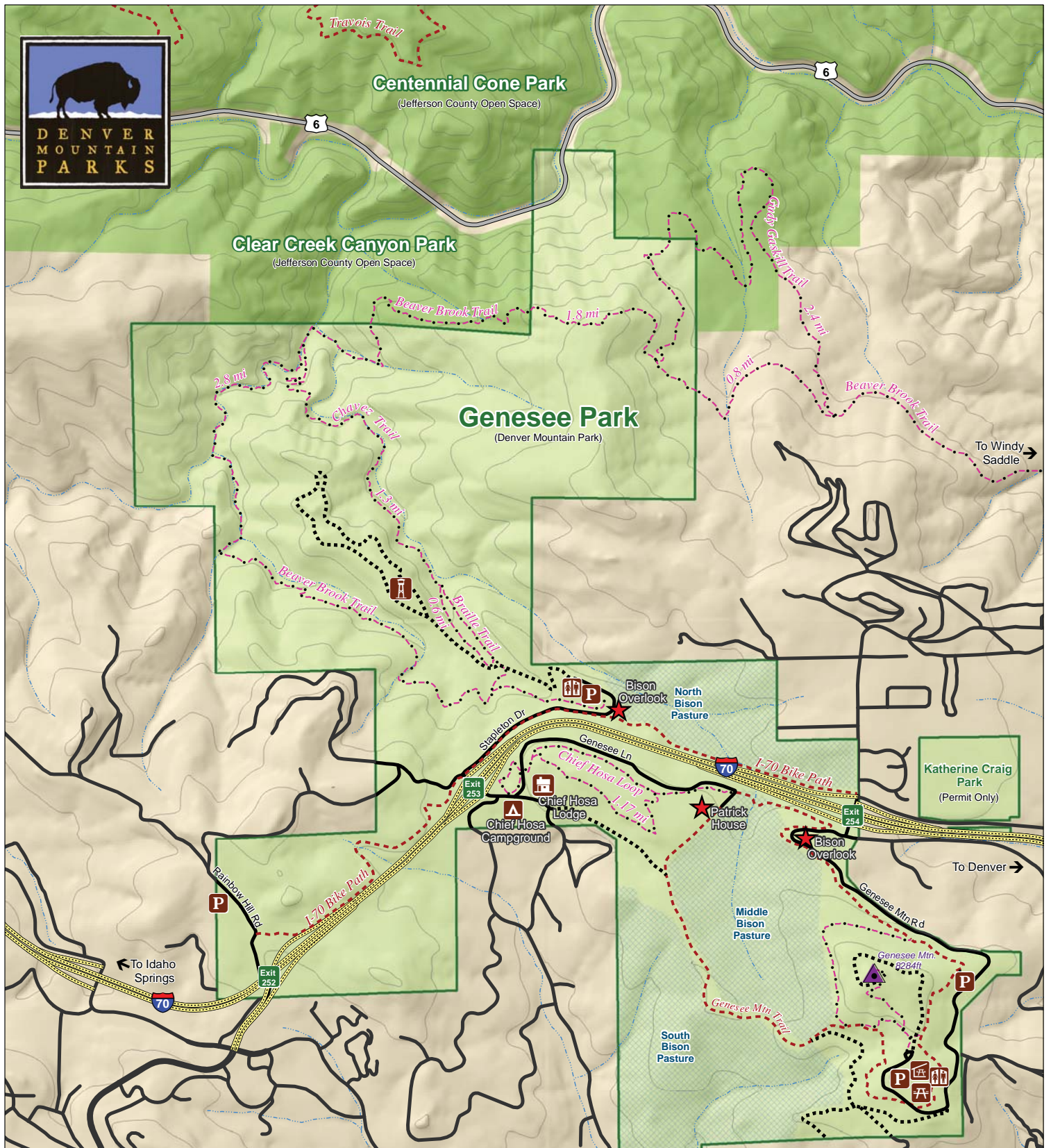


Centennial Cone Park
(Jefferson County Open Space)

Clear Creek Canyon Park
(Jefferson County Open Space)

Genesee Park
(Denver Mountain Park)

Katherine Craig Park
(Permit Only)



Genesee Park

- Stay on Designated Trails. Bicycles Prohibited on Hiker-Only Trails
- Points of Interest
 - Picnic Area
 - Restroom
 - Picnic Shelter
 - Parking
 - Campground
 - Denver Mountain Park
 - Hiker Only Trails
 - Jefferson Co. Open Space
 - Multi-use Trails
 - Grazing Pastures
 - 200 ft Contours
 - Service Road
- 0 500 1,000 2,000 Feet

	<p>Chief Hosa Lodge Event venue featuring patio areas and 3,000 square feet of indoor meeting space. Open year-round by reservation only. For more information or rental inquiries: (720) 913-0799 park.permits@denvergov.org</p>
	<p>Chief Hosa Campground RV and Campground facilities featuring 35 RV spots and 26 tent sites. Open seasonally from May - September For more information or reservations: (303) 526-1324 www.chiefhosa.org</p>
	<p>Genesee Mtn. Ropes Course and Experimental Outdoor Center Outdoor recreation program consisting of a ropes/challenge course. Open seasonally from April - October by reservation only. For more information: (720) 865-0680 or email genesee.ropes@denvergov.org</p>



North
Bison
Pasture

Katherine Craig Park
(Permit Use Only)

Middle
Bison
Pasture

South
Bison
Pasture

Patrick House
Trailhead

Bison Meadow
Trailhead

Genesee Mtn
Trailhead

Genesee Mtn.
8284ft.



Genesee Park

Stay on Designated Trails. Bicycles Prohibited on Hiker-Only Trails

- Points of Interest
- Picnic Area
- Restroom
- Picnic Shelter
- Parking
- Campground
- Denver Mountain Park
- Jefferson Co. Open Space
- Grazing Pastures
- Hiker Only Trails
- Multi-use Trails
- 200 ft Contours
- Service Road

