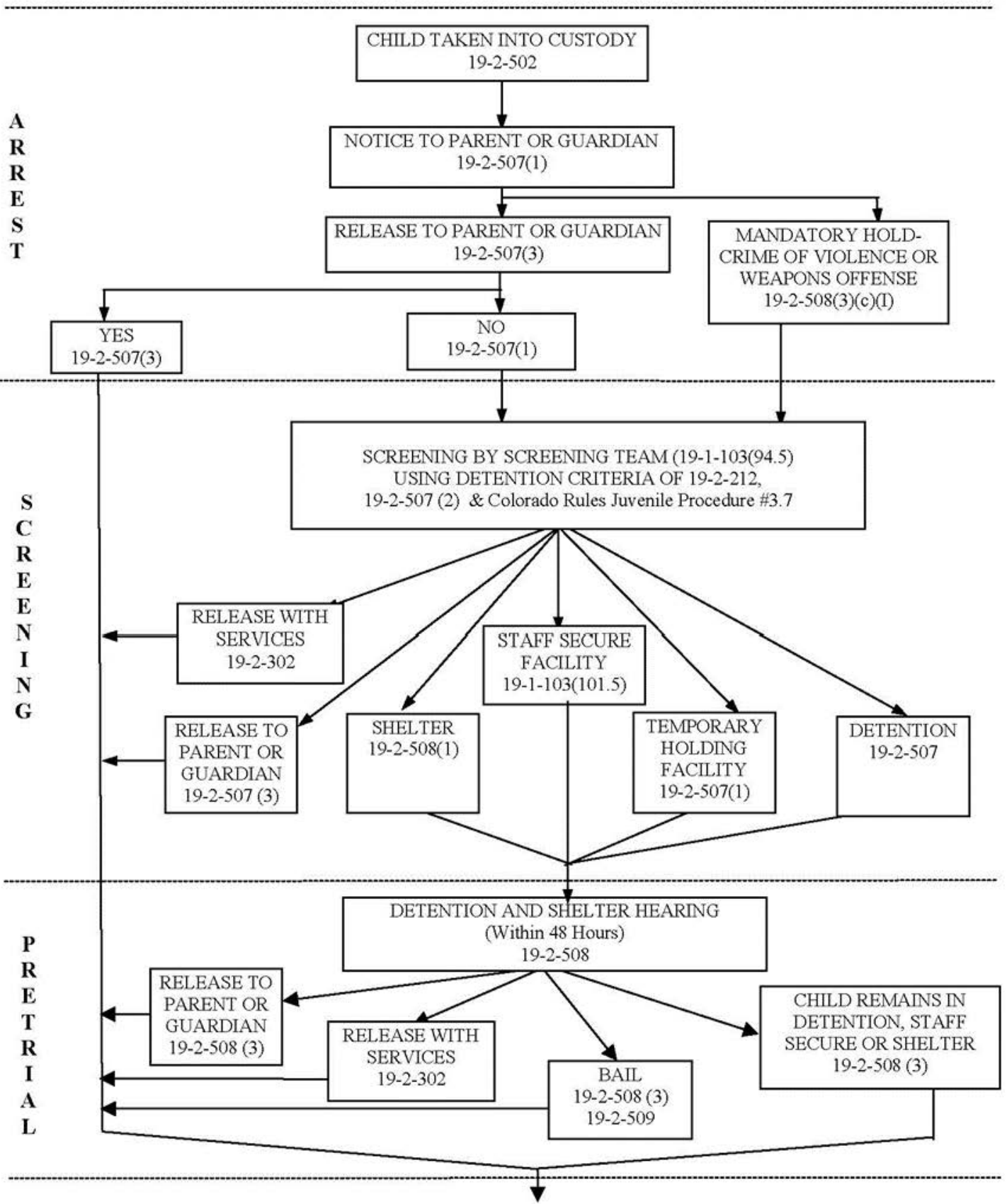


# STATE OF COLORADO JUVENILE JUSTICE SYSTEM FLOWCHART



C  
A  
S  
E  
  
F  
I  
L  
I  
N  
G

PRELIMINARY INVESTIGATION  
BY DISTRICT ATTORNEY  
19-2-510

INFORMAL  
ADJUSTMENT  
19-2-703

DIVERSION  
19-2-303 & 19-2-704

FILING OF PETITION  
[Within 72 hours if in custody  
or in PTR Program-19-2-  
508(3)(E)(V)]  
19-2-512

DIRECT FILING  
IN DISTRICT COURT  
19-2-517

A  
D  
J  
U  
D  
I  
C  
A  
T  
I  
O  
N

MOTION TO  
TRANSFER TO  
DISTRICT COURT  
19-2-518

ADVISEMENT  
19-2-706

SENTENCE AS  
AN ADULT OR  
A YOUTHFUL OFFENDER  
19-2-517(3)(a)

INVESTIGATION &  
HEARING ON TRANSFER  
19-2-518

PRELIMINARY HEARING  
19-2-705

TRANSFER TO DIST. CT.  
19-2-518(7)

ENTRY OF PLEA  
19-2-708

PLEA OF GUILTY  
19-2-708

PLEA OF NOT GUILTY  
19-2-708

ADJUDICATORY TRIAL  
(Within 60 days)  
19-2-708 & 801-805

DEFERRED ADJUDICATION  
19-2-709

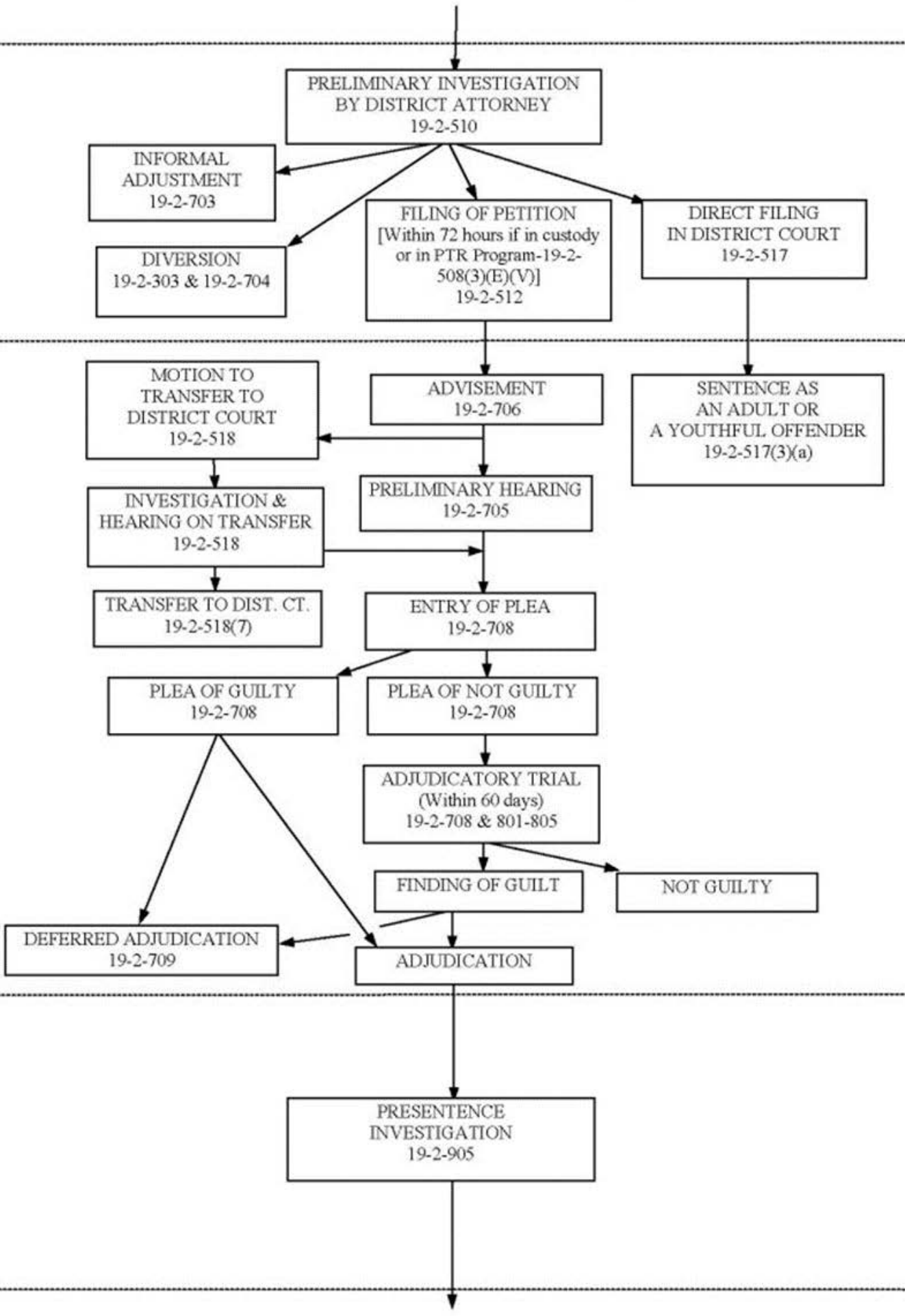
FINDING OF GUILT

NOT GUILTY

ADJUDICATION

P  
R  
E  
S  
E  
N  
T  
E  
N  
C  
E

PRESENTENCE  
INVESTIGATION  
19-2-905



S  
E  
N  
T  
E  
N  
C  
I  
N  
G

SENTENCING HEARING  
(Within 45 Days of Adjudicatory  
Trial [19-2-804(3)]  
19-2-906

- SENTENCING OPTIONS  
19-2-907
- (1) Court may enter decree imposing any or a combination, as appropriate:
    - (a) Commitment to DHS (19-2-909)
    - (b) County Jail (19-2-910)
    - (c) Detention (19-2-911)
    - (d) Placement of custody with a relative or suitable person (19-2-912)
    - (e) Probation (19-2-913) (19-2-925 through 19-2-926)
    - (f) Community Accountability Program (19-2-914)—unfunded option
    - (g) Placement with social services (19-2-915)
    - (h) Placement in hospital (19-2-916)
    - (i) Fine (19-2-917)
    - (j) Restitution (19-2-918)
    - (k) Anger management treatment or any other appropriate treatment program (19-2-918.5)
  - (2) Judge may sentence as special offender (19-2-908)
    - (a) Mandatory sentence offender
    - (b) Repeat juvenile offender
    - (c) Violent offender
    - (d) Aggravated juvenile offender
  - (3) Sentence may include parent conditions (19-2-919)
  - (4) If sentence includes school attendance-notice to school is required
  - (5) If placement out of the home-court to consider criteria of 19-2-212, evaluation of 19-1-107, and 19-3-701(5).

P  
O  
S  
T  
  
T  
  
S  
E  
N  
T  
E  
N  
C  
I  
O  
N

IF COMMITMENT

COMMUNITY REFERRAL  
AND REVIEW  
19-2-210

COMMUNITY  
PLACEMENT

JUVENILE PAROLE  
[Mandatory 6 months parole-  
19-2-909(1)(b)]  
19-2-1002 through 1004

PAROLE DISCHARGE  
19-2-1002(9)