

COLORADO

CONVENTION CENTER

Expansion Project

Community Partners

December 16, 2021



DENVER
THE MILE HIGH CITY

CONNECT WITH US 311 | [POCKETGOV](#) | [DENVERGOV.ORG](#) | DENVER 8 TV



Agenda



Introduction



Project
Update



Construction
Update



AVD
Update



Visit
Denver
Update



Communications



Next
Steps



Introduction



Introductions



Travis Bogan
DOTI



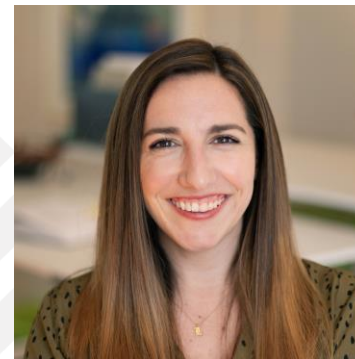
Jason Wallack
Hensel Phelps



Ginger White
Denver Arts and
Venues



Rachel Benedick
Visit Denver



Lisa McKell
CCC-XP Comms



Relay information to your network



Bring questions and concerns
from your network

*There will be time at the end of the presentation for
questions – please put any questions in the Q&A
box*



Project Update



Project remains within budget and on schedule

No major closures scheduled until cranes are disassembled starting Fall 2022



Recent Milestones

All three cranes are assembled



Bid packages 4 & 5 have been issued and associated buyout is nearly complete



Design/Construction Goals

- **Design Goal:** 22% — 22% Contracted
- **Construction Goal:** 17% — On Track. 11% Committed.
- **23** Current M/WBE Partners with Letters of Intent

Outreach

- HP Office Hours – Every Tuesday from 8:30-10:30
- DOTI Bagels and Business (12/3)
- Bridging the Gap (12/8)
- Opportunity Council Holiday Luncheon (12/9)
- HCC Cake Auction (12/15)

Post-RFP Successes

- Civil Technology Inc – Third Party Inspections
- Bison Drilling – Concrete Core Drilling and GPR Scanning
- Four Star Drywall – Drywall and Framing
- Applied Property Services – Parking Lot Marking
- Metropolitan Services – Construction Cleaning
- Bosco Constructors – Metal Paneling
- MBR Electric – Temperature Controls
- Gary Leimer Inc – Flooring



WORKNOW

- **Access to Workforce Training and Job Opportunities:** [CCC-XP Career Opportunities](#)
- **Current Trade Partner Career Opportunities:**
 - Electrical – Weifield Group
 - Fire Protection – Frontier Fire Protection
 - Mechanical HVAC & Plumbing – RK Mechanical
 - Structural Steel Erection – Derr & Gruenewald Construction
 - Structural Steel Fabrication – W&W AFCO Steel
 - Drilled Piers – Coggins & Sons
 - Waste Management – Phoenix Masonry

Outreach

- DMCSP Convener Team Meeting (12/7)
- WORKNOW Partner Networking Event (12/7)
- Master's Apprenticeship Year-End Celebration (12/7)
- Concrete Preservation Institute (CPI) Veteran Job Training Intro Call (12/9)
- Construction Careers Now Fair (12/16)
- DMCSP Full Partnership Quarterly Meeting (1/11)



Construction Update



Where We Were





Crawler Crane Assembly



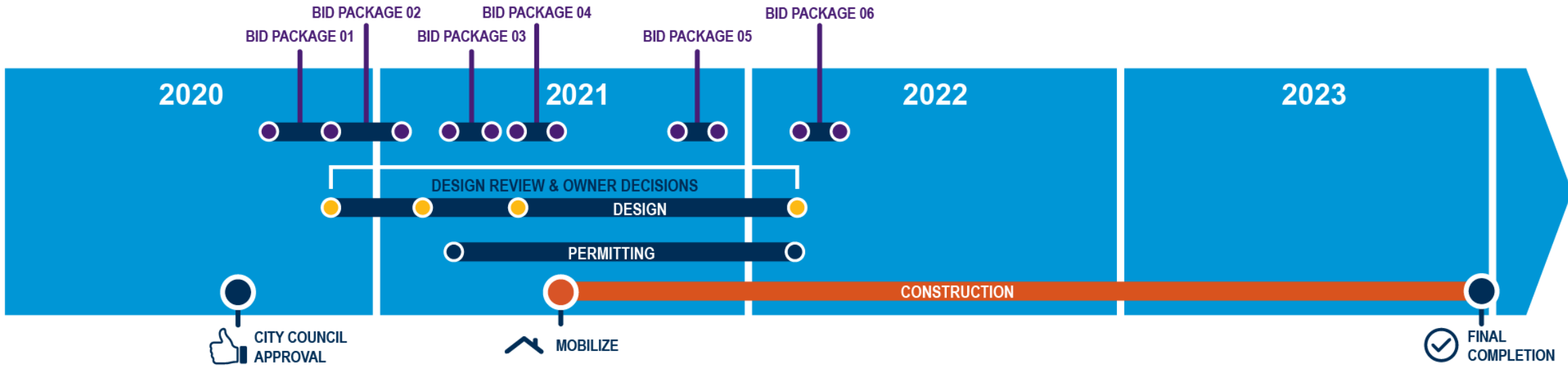


Where We Are





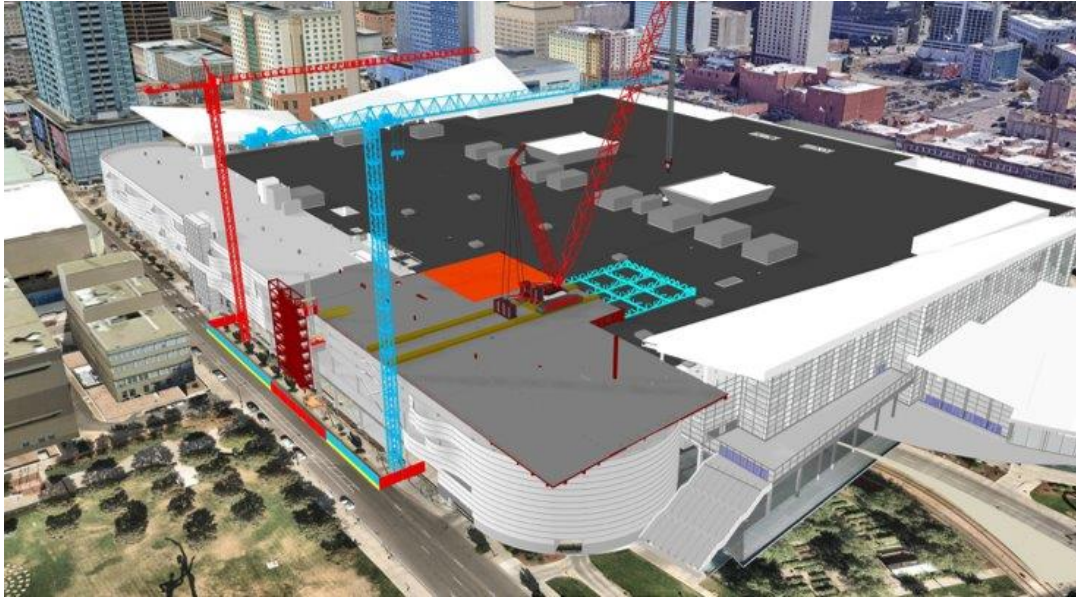
Schedule



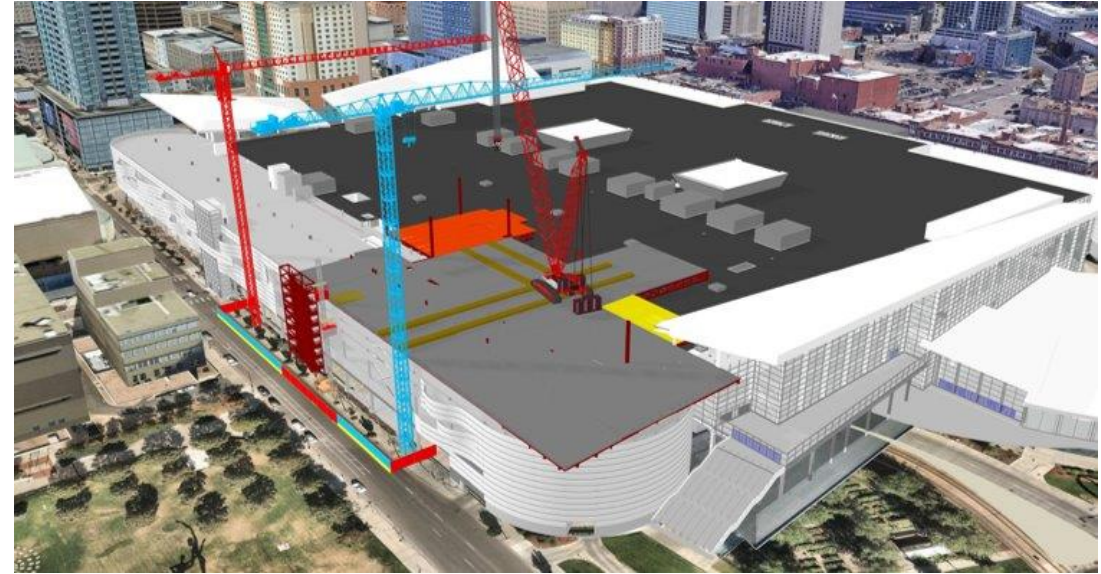


Four-Month Look Ahead

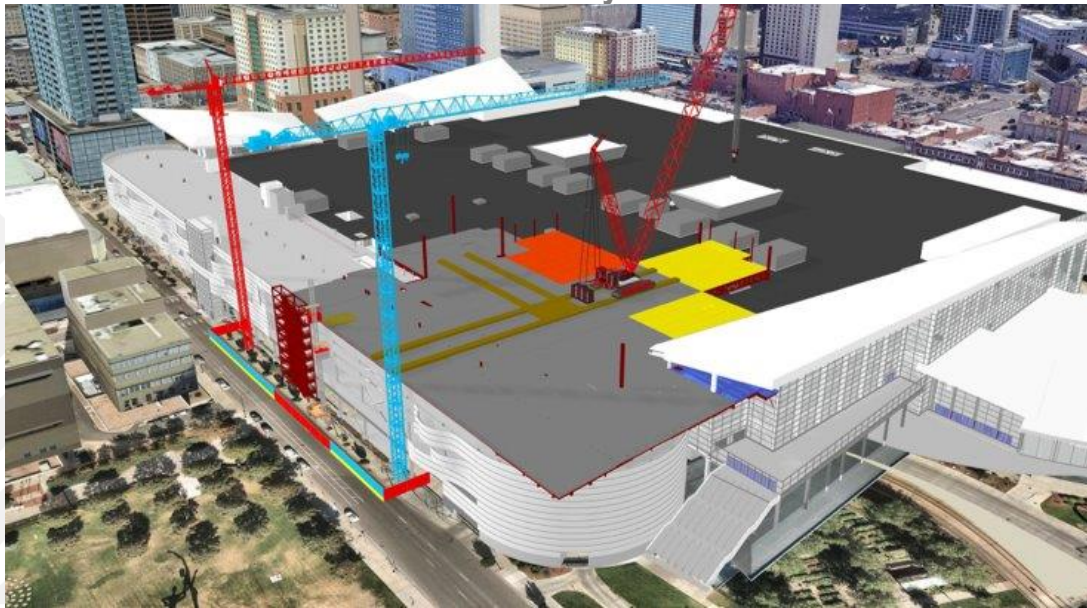
December



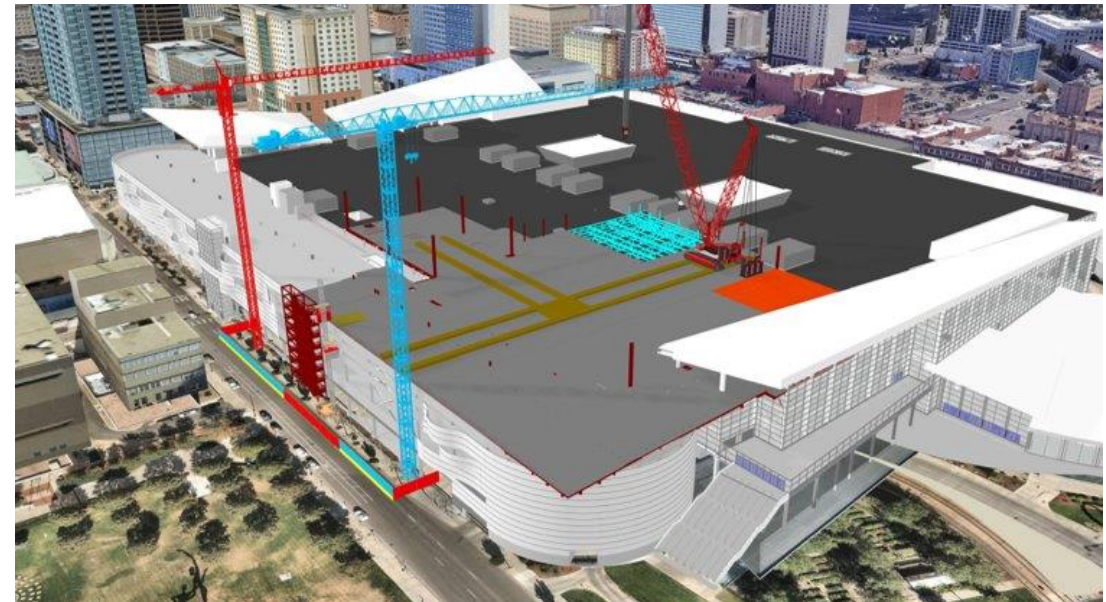
January



February



March





Project South



Visual Schedule - Escalator EE123 and DDEE Demo



Parking Level 2

Parking Level 1

Shampa Loading Dock

Street Shoring Install - Start 12.06



37



Phase 2

Phase 2

Start 11.26

Milestones	
P2 - Demo GMU and Shear Walls -	09.18.21
Demo Ts P3 Slab -	10.25.21
P1 - Demo GMU and Shear Walls -	09.30.21
Demo Ts P2 Slab -	11.08.21
Exhibit - Demo GMU and Shear Walls -	11.14.21
Demo Ts P1 Slab -	11.29.21
Demo Ts Exhibit Slab - Escalator	12.13
- Elevator -	12.08

Complete 12.02

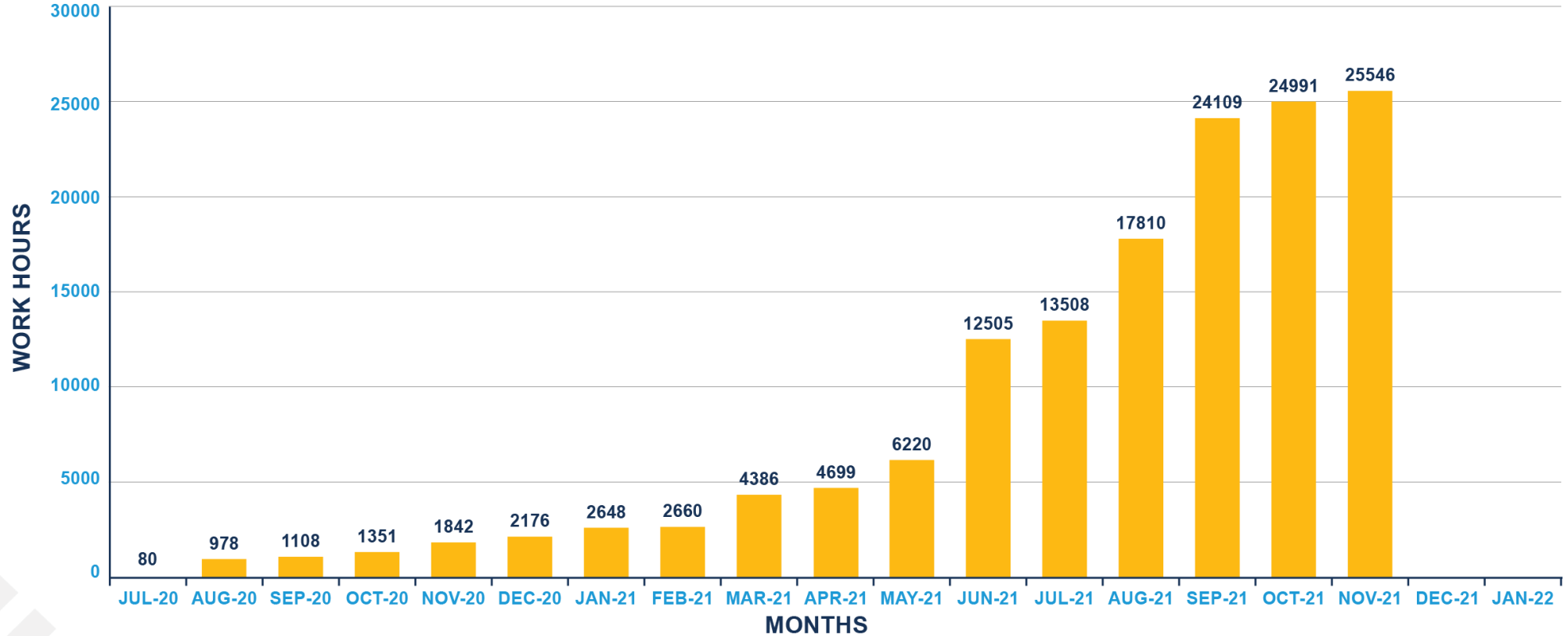
Street Shoring Install - Start 12.06





Monthly Work Hours

CCCXP MONTHLY WORK HOURS





CCC Parking Garage Changes

- **Level 1** – Localized stall closures throughout 2021 and 2022
- **Level 2** – Localized stall closures through 2022
- **Level 3** – Closed to public parking through construction

Construction Parking

- Primary – CCC and DPAC garages
- Secondary – Surface lots
- Carpooling and public transportation is encouraged

Construction Coordination

- Continued coordination of material deliveries, specific to structural steel and concrete placement on Champa
- No planned RTD Station Closures



AVD Update



Events and Protocols:



Lion King opened 12/2 under rigorous COVID protocols; daily testing of company and rapid testing of local crew three days/week.



New production of Colorado Ballet's *Nutcracker* opened 12/4. CSA performances are also underway.



D CPA production of *A Christmas Carol* means all houses are open for business. Masks and vaccine requirements for all venues are in place.



The Arts Complex has opened a rapid test option for patrons 11 and under at the Glasstop Bar.



Visit Denver Update



Convention Update:

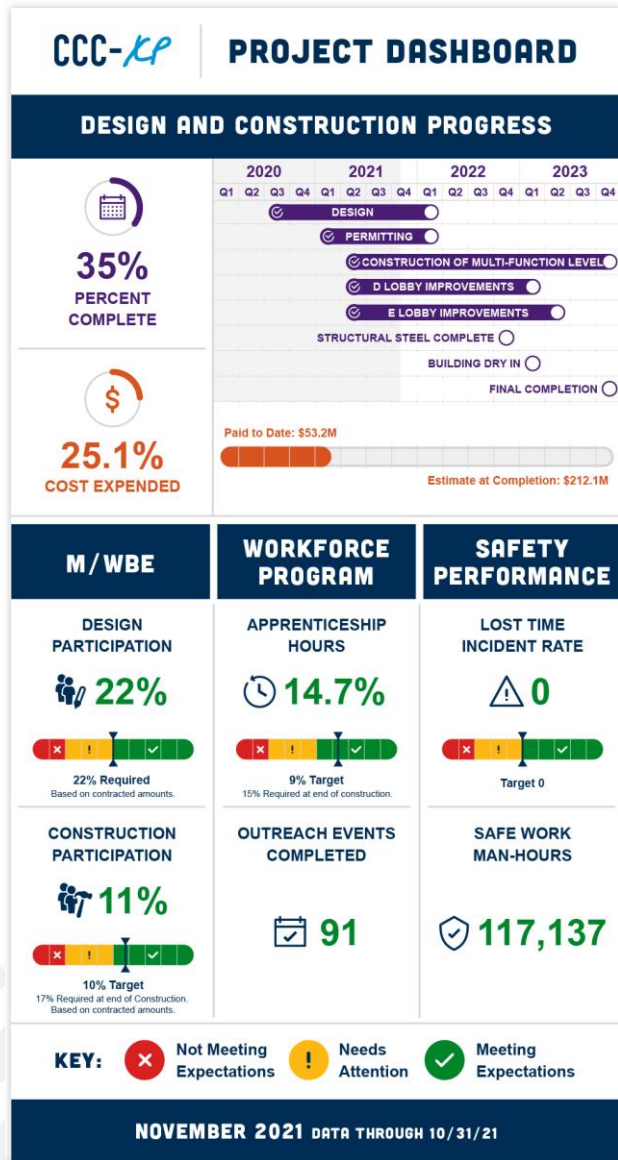
- + 2022 Convention Pace
- + Mandate Impacts
- + Construction Impacts
- + 2024 & Beyond
- + Mile High Tree & Mile High Holidays



Communications



Text description of this infographic



Project Updates

- No major closures anticipated until Fall 2022. There will be single lane closures of Champa as needed throughout 2022.
- If you would like to be added to our stakeholder list, please email CCCXP@denvergov.org
- Up to date project information: bit.ly/CCCXP
- Project dashboard to share high-level project status with the public updated monthly on the project site



Next Steps



Next Steps



If you have any questions or feedback, please send it through the chat or contact us at:

CCCXP@denvergov.org



Tentative Next Meeting: April 2021



Q&A