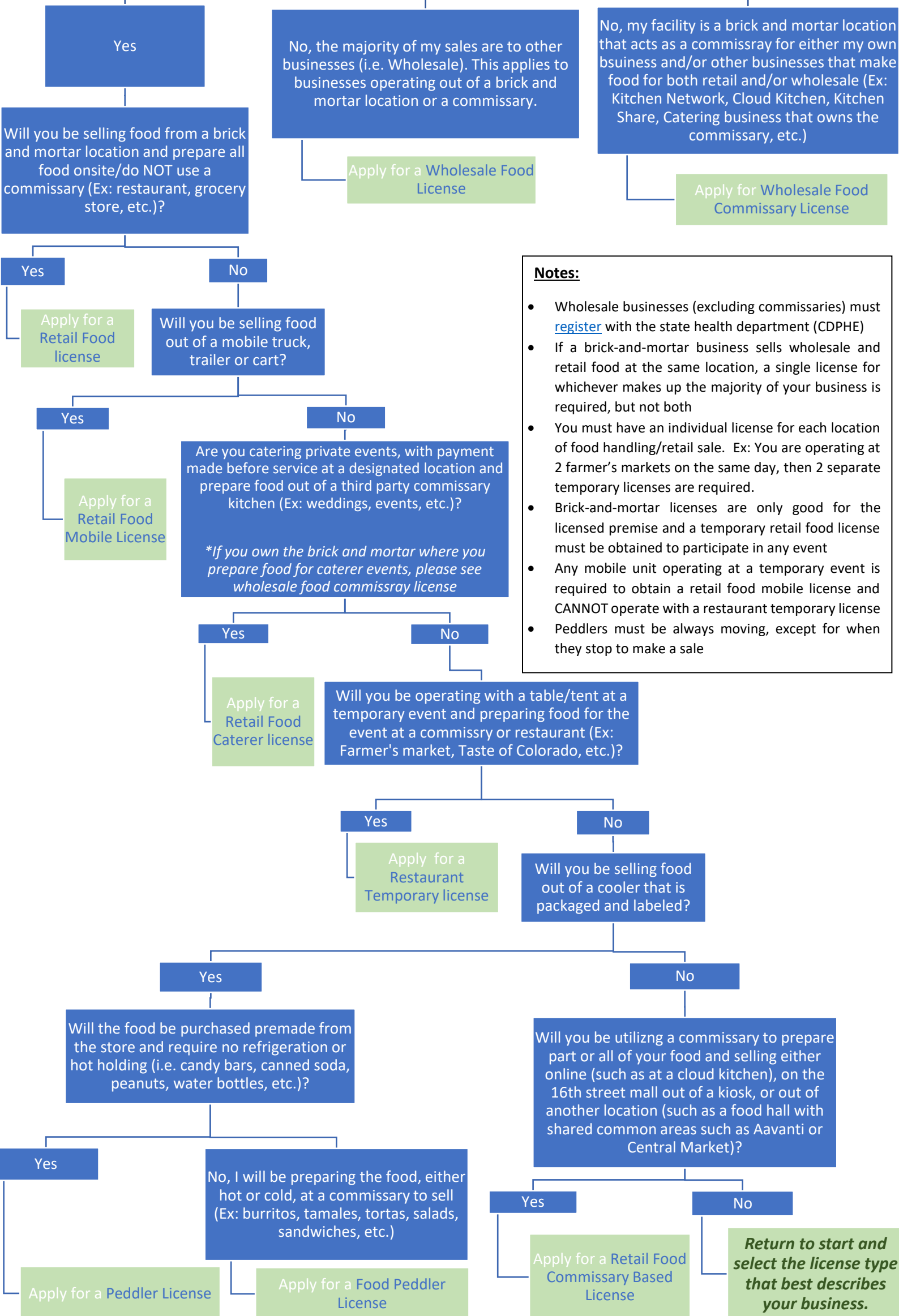




Are the majority of your sales direct to consumer (i.e. Retail)?



Notes:

- Wholesale businesses (excluding commissaries) must [register](#) with the state health department (CDPHE)
- If a brick-and-mortar business sells wholesale and retail food at the same location, a single license for whichever makes up the majority of your business is required, but not both
- You must have an individual license for each location of food handling/retail sale. Ex: You are operating at 2 farmer's markets on the same day, then 2 separate temporary licenses are required.
- Brick-and-mortar licenses are only good for the licensed premise and a temporary retail food license must be obtained to participate in any event
- Any mobile unit operating at a temporary event is required to obtain a retail food mobile license and CANNOT operate with a restaurant temporary license
- Peddlers must be always moving, except for when they stop to make a sale