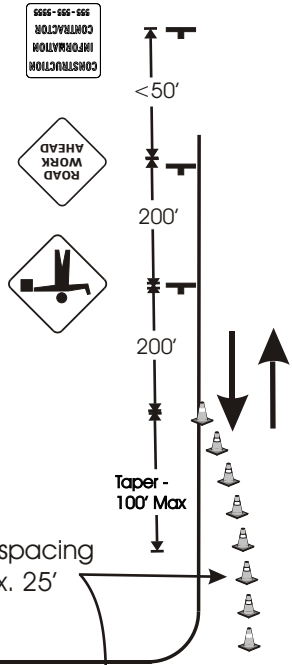


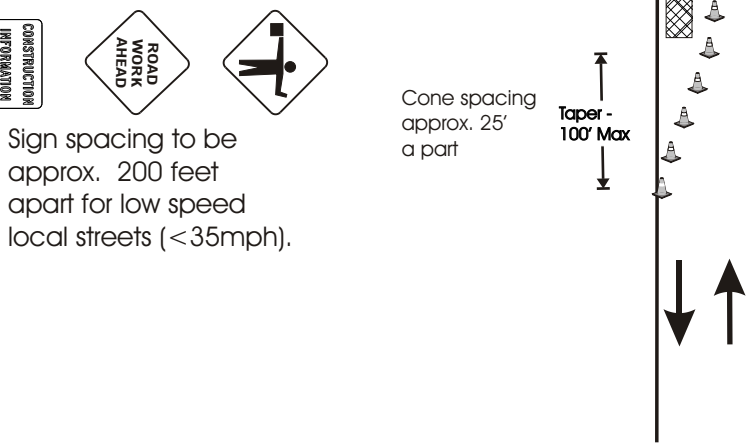
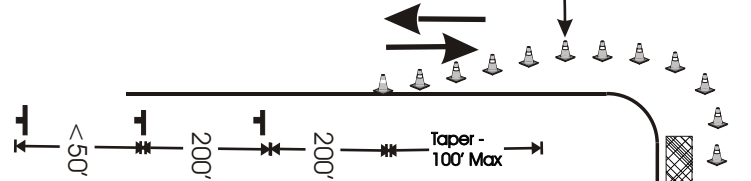
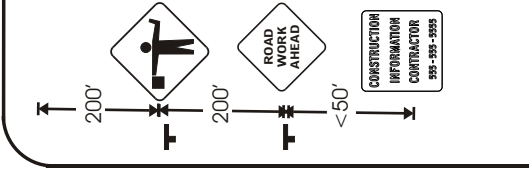


Indicate North On Plan

Sign spacing to be approx. 200 feet apart for low speed local streets (<35mph).



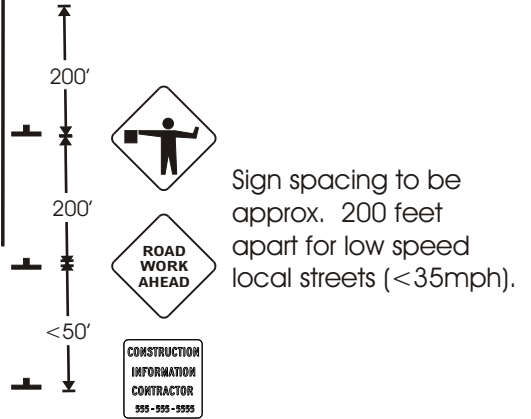
Sign spacing to be approx. 200 feet apart for low speed local streets (<35mph).



Sign spacing to be approx. 200 feet apart for low speed local streets (<35mph).

Cone spacing approx. 25' a part

Taper - 100' Max



Sign spacing to be approx. 200 feet apart for low speed local streets (<35mph).

* Contractor must resolve all local access and safety issues.

* All barricades, cones, and signs must be in accordance with the Manual on Uniform Traffic Control Devices (MUTCD).

* Flaggers must follow MUTCD Guidelines. Flaggers must be certified and use and wear safety equipment as required.

DRAWING NOT TO SCALE

	<p>City and County of Denver Department of Transportation & Infrastructure</p>
	<p>Intersection Lane Closure</p>
	<p>Residential Roads Only</p>
<p>Revised 9/28/2022</p>	