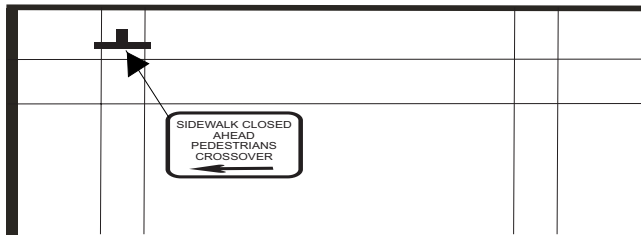
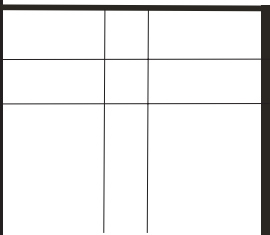
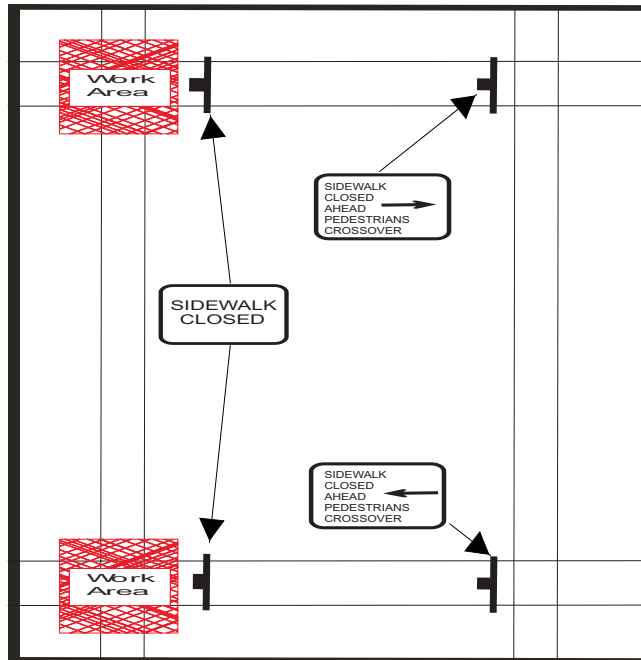
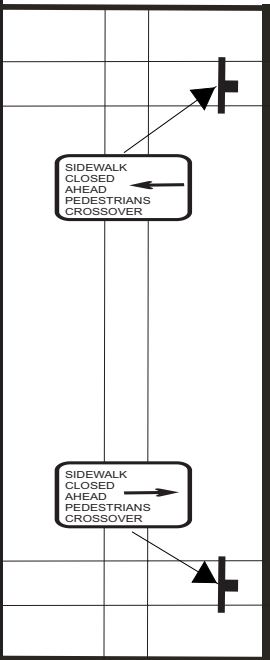
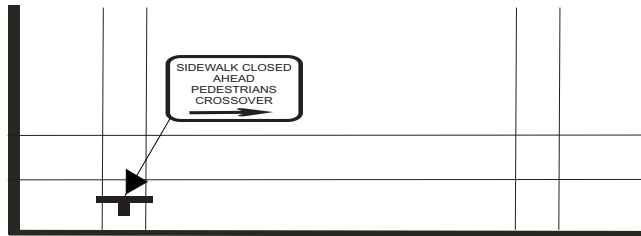
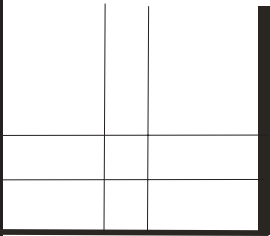


* Contractor must resolve all local access and safety issues.

* All barricades, cones, and signs must be in accordance with the latest edition of the Manual on Uniform Traffic Control Devices (MUTCD).



Indicate North On Plan

Do not block or encumber sidewalks at any time.
Drawing Not to Scale



City and County of Denver
Department of Transportation
& Infrastructure

Sidewalk - Two Corner Closure

All Sidewalks

Revised 9/28/2022